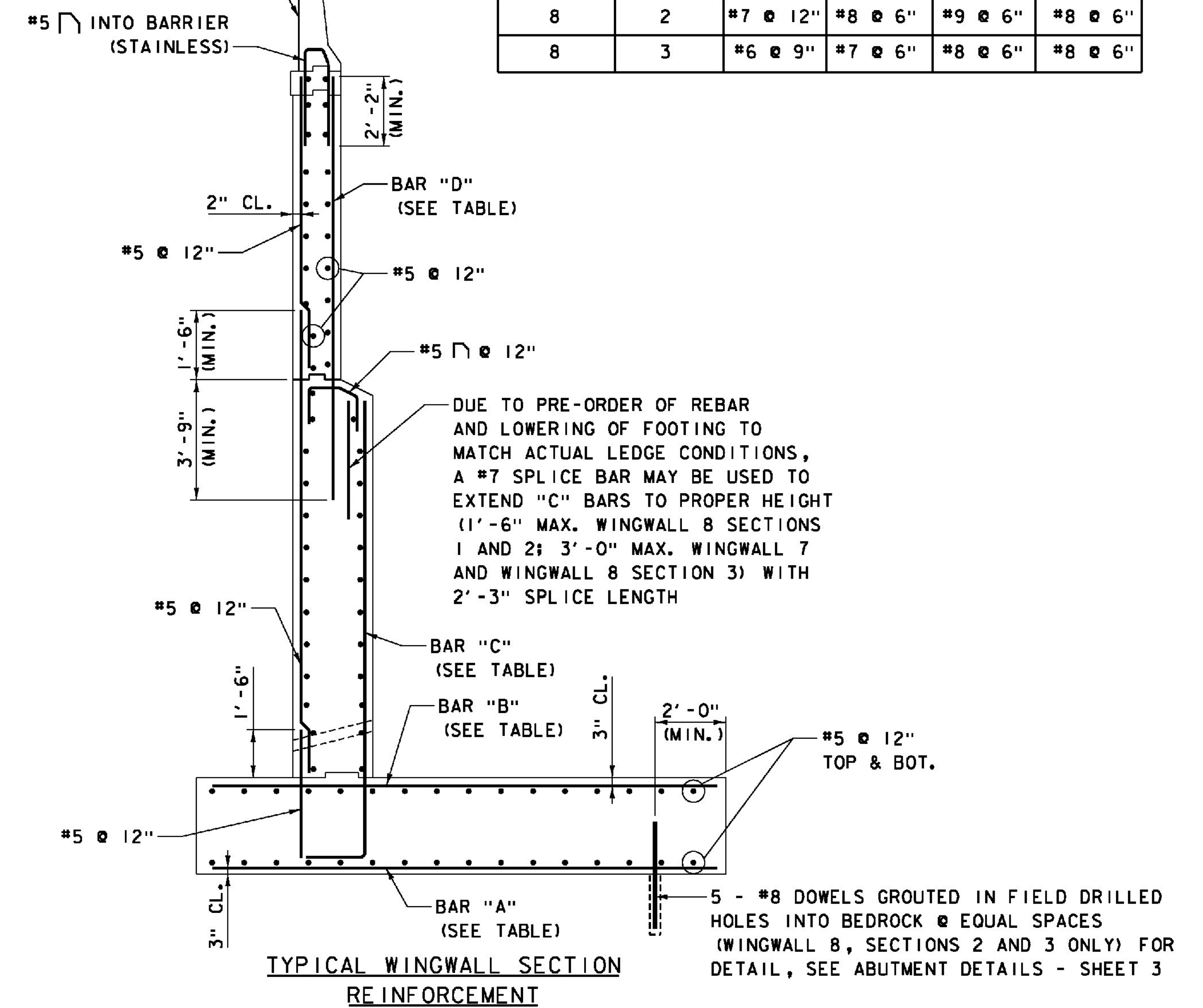


WINGWALL 7 REINFORCEMENT
SCALE 3/8" = 1'-0"

FOR REINFORCING DETAILS OF BARRIER SEE ABUTMENT DETAILS - SHEET 2



TYPICAL WINGWALL SECTION REINFORCEMENT
SCALE 3/8" = 1'-0"

ABUTMENT 4 WINGWALL REINFORCEMENT					
WINGWALL NO.	SECTION NO.	BAR "A"	BAR "B"	BAR "C"	BAR "D"
7		#7 @ 12"	#7 @ 6"	#8 @ 6"	#8 @ 6"
8	1	#6 @ 9"	#8 @ 6"	#10 @ 6"	#8 @ 6"
8	2	#7 @ 12"	#8 @ 6"	#9 @ 6"	#8 @ 6"
8	3	#6 @ 9"	#7 @ 6"	#8 @ 6"	#8 @ 6"

LEGEND
NF = NEAR FACE
FF = FAR FACE
EF = EACH FACE

ITEMS USED ON THIS SHEET	
ITEM NO.	DESCRIPTION
501.33	CONCRETE, HIGH PERFORMANCE CLASS A
501.34	CONCRETE, HIGH PERFORMANCE CLASS B
507.15	REINFORCING STEEL
507.16	DRILLING AND GROUTING DOWELS
507.17	EPOXY COATED REINFORCING STEEL
900.635	STAINLESS STEEL REINFORCING
900.640	BRIDGE RAILING, F-SHAPE CONCRETE

- NOTES:**
- REINFORCEMENT ABOVE FOOTINGS TO BE EPOXY COATED; FOOTING REBAR IS UNCOATED; REINFORCEMENT IN AND INTO F-SHAPE BARRIER TO BE SOLID STAINLESS.
 - FOR F-SHAPE BARRIER REINFORCING DETAILS, SEE ABUTMENT DETAILS - SHEET 2.
 - FOR SECTION A-A & SECTION B-B PILASTER REINFORCING DETAILS, SEE ABUTMENT DETAILS - SHEET 3.
 - FOR SECTION D-D AND SECTION E-E, SEE ABUTMENT 3 WINGWALL REINFORCEMENT SHEET.

PROJECT NAME: WINDSOR	PLOT DATE: 7/30/2015
PROJECT NUMBER: IM 091-1(64)	DRAWN BY: S. GUNN
FILE NAME: z10o188Abut4RW1.dgn	CHECKED BY: S. HALLORAN
PROJECT LEADER: J. WILSON	DESIGNED BY: S. BOYINGTON
ABUT. 4 WINGWALL REINFORCEMENT - 1	SHEET 132 OF 156