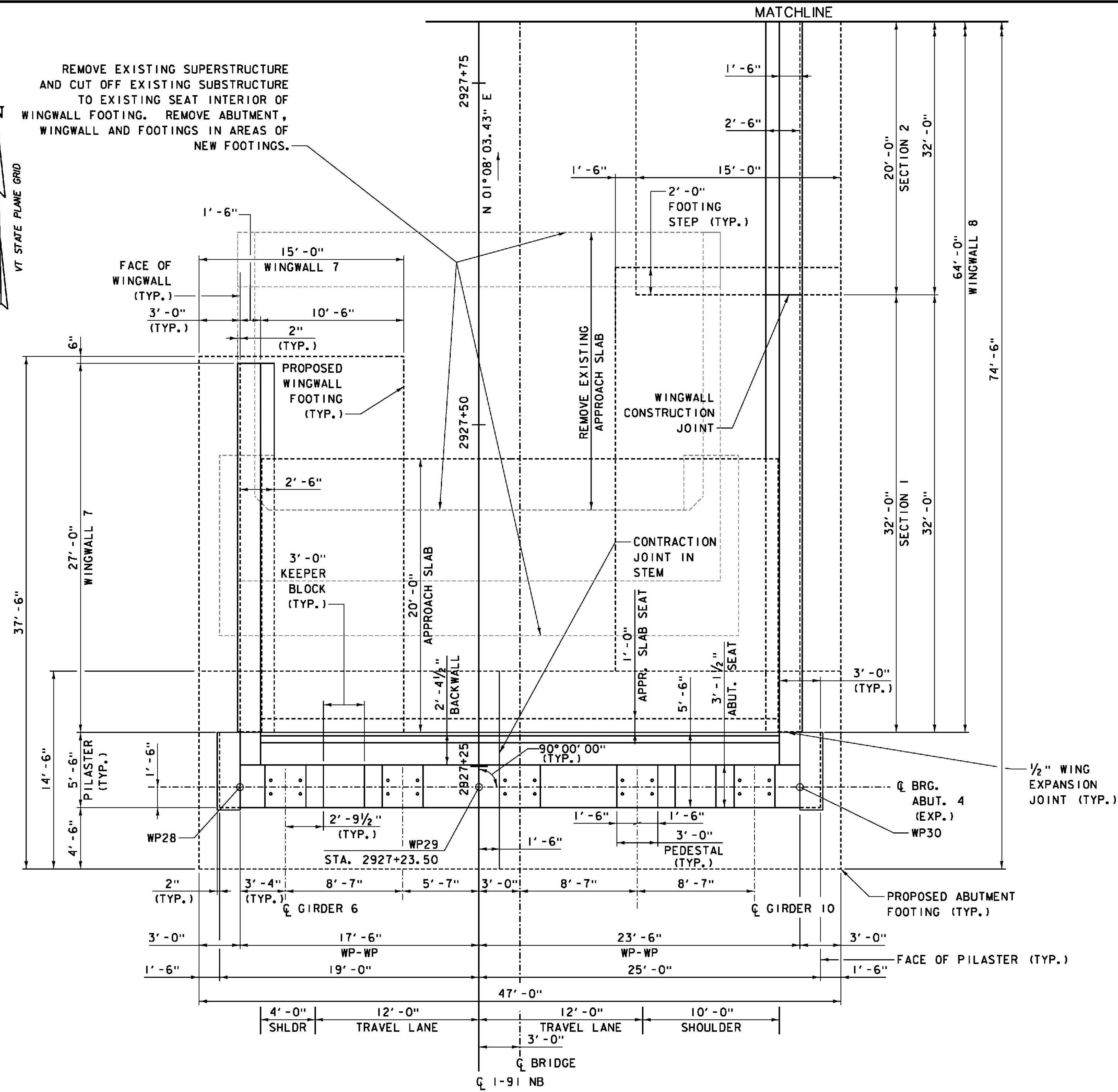
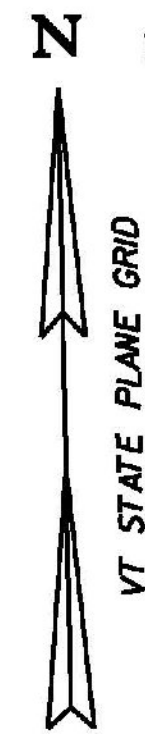
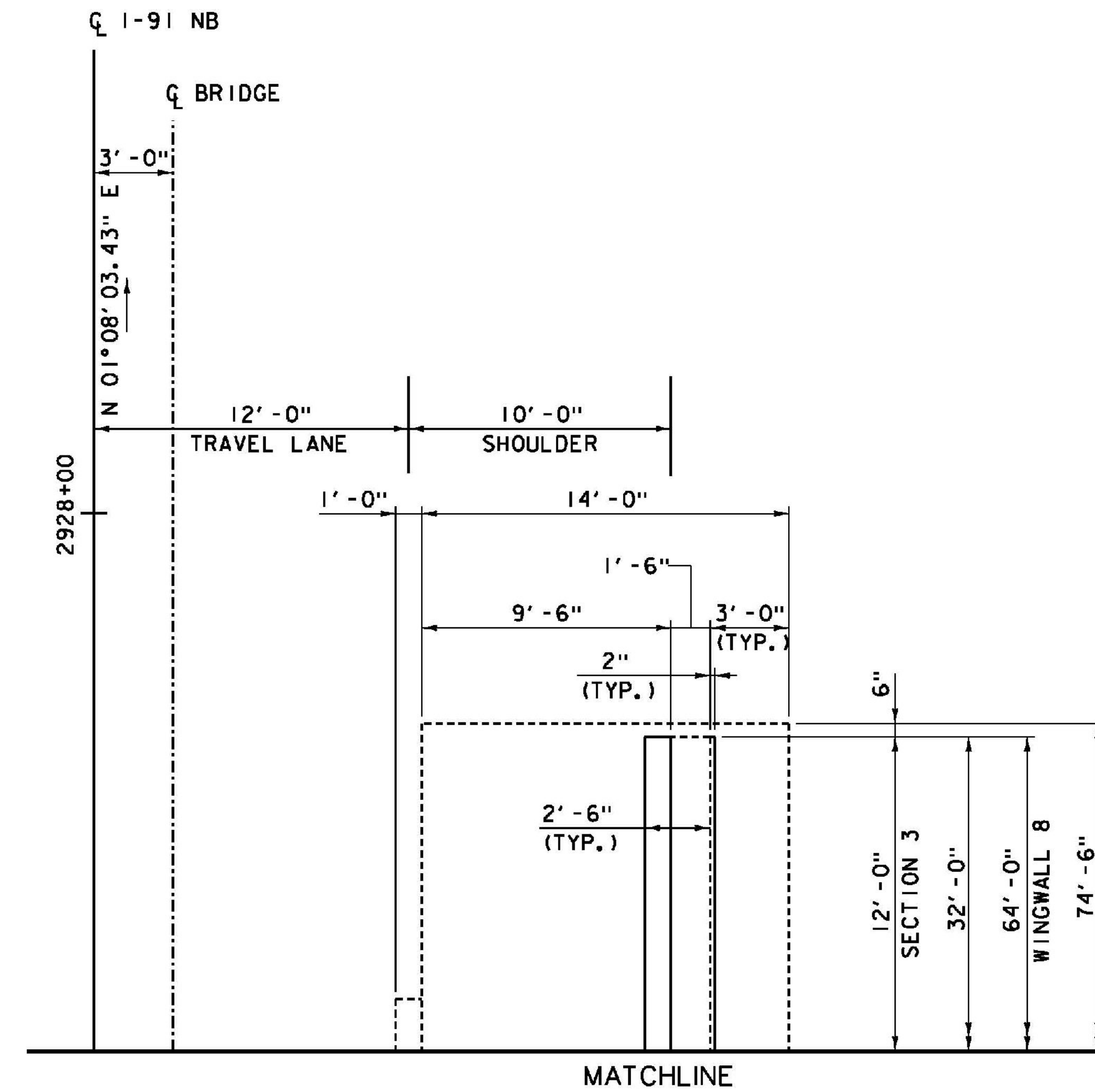


REMOVE EXISTING SUPERSTRUCTURE AND CUT OFF EXISTING SUBSTRUCTURE TO EXISTING SEAT INTERIOR OF WINGWALL FOOTING. REMOVE ABUTMENT, WINGWALL AND FOOTINGS IN AREAS OF NEW FOOTINGS.



ABUTMENT 4 PLAN
SCALE 1/4" = 1'-0"

WORKING POINT CONTROL			
LOCATION	STATION	NORTHING	EASTING
WP28	2927+23.50, 17.50' LT.	347867.0928	1665153.7493
WP29	2927+23.50, CL	347866.7464	1665171.2458
WP30	2927+23.50, 23.50' RT.	347866.2812	1665194.7412



NOTES:

- FOR SUBSTRUCTURE NOTES, SEE ABUTMENT 3 PLAN SHEET.
- FOR ADDITIONAL PILASTER & PEDESTAL DETAILS, SEE ABUTMENT DETAILS - SHEET 1.
- FOR ABUTMENT 4 WINGWALL FOOTING LAYOUT, SEE ABUTMENT 4 FOOTING PLAN SHEET.
- FOR ABUTMENT 4 FOOTING REINFORCING DETAILS, SEE ABUTMENT 4 REINFORCEMENT SHEETS 1 & 2.
- FOR ABUTMENT 4 STEM, SEAT AND BACKWALL REINFORCING DETAILS, SEE ABUTMENT 4 REINFORCEMENT - SHEET 2.
- FOR KEEPER BLOCK DETAILS, SEE ABUTMENT DETAILS - SHEET 2.

PROJECT NAME: WINDSOR	PLOT DATE: 7/30/2015
PROJECT NUMBER: IM 091-1(64)	DRAWN BY: S. GUNN
FILE NAME: z10o188Abut4P.dgn	DESIGNED BY: S. BOYINGTON
PROJECT LEADER: J. WILSON	CHECKED BY: S. HALLORAN
ABUTMENT 4 PLAN	SHEET 125 OF 156