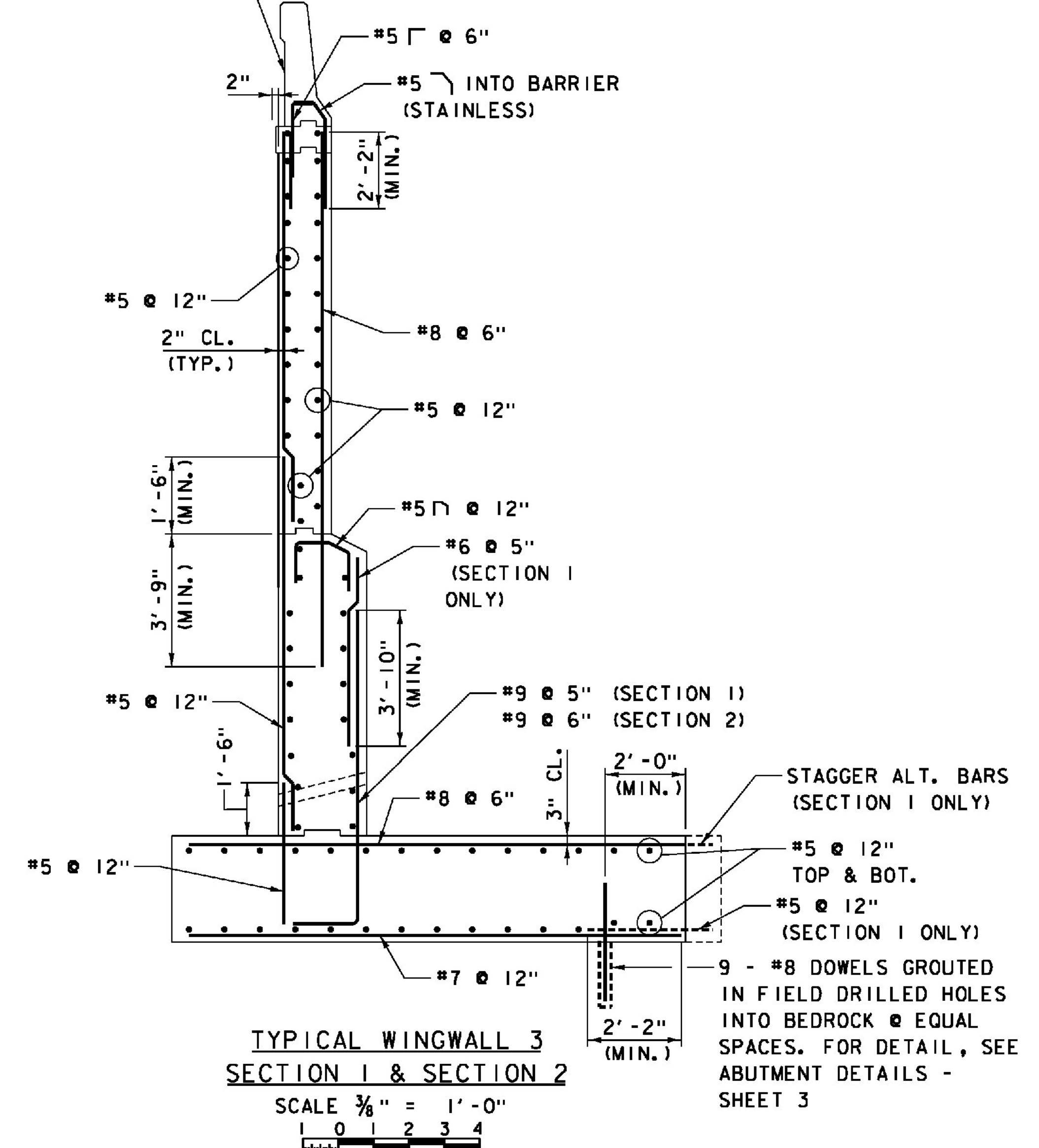


WINGWALL 3 REINFORCEMENT
 SCALE 3/8" = 1'-0"
 1 0 1 2 3 4

LEGEND
 NF = NEAR FACE
 FF = FAR FACE
 EF = EACH FACE

ITEMS USED ON THIS SHEET	
ITEM NO.	DESCRIPTION
501.33	CONCRETE, HIGH PERFORMANCE CLASS A
501.34	CONCRETE, HIGH PERFORMANCE CLASS B
507.15	REINFORCING STEEL
507.16	DRILLING AND GROUTING DOWELS
507.17	EPOXY COATED REINFORCING STEEL
900.635	STAINLESS STEEL REINFORCING
900.640	BRIDGE RAILING, F-SHAPE CONCRETE

FOR REINFORCING DETAILS OF BARRIER SEE ABUTMENT DETAILS - SHEET 2



TYPICAL WINGWALL 3 SECTION 1 & SECTION 2
 SCALE 3/8" = 1'-0"
 1 0 1 2 3 4

- NOTES:**
- REINFORCEMENT ABOVE FOOTINGS TO BE EPOXY COATED; FOOTING REBAR IS UNCOATED; REINFORCEMENT IN AND INTO F-SHAPE BARRIER TO BE SOLID STAINLESS.
 - FOR F-SHAPE BARRIER REINFORCING DETAILS, SEE ABUTMENT DETAILS - SHEET 2.
 - FOR SECTION A-A & SECTION B-B PILASTER REINFORCING DETAILS, SEE ABUTMENT DETAILS - SHEET 3.
 - FOR SECTION D-D AND SECTION E-E, SEE ABUTMENT 1 WINGWALL REINFORCEMENT SHEET.

PROJECT NAME: WINDSOR
 PROJECT NUMBER: IM 091-1(64)
 FILE NAME: z10o188Abut2RW1.dgn PLOT DATE: 7/30/2015
 PROJECT LEADER: J. WILSON DRAWN BY: S. GUNN
 DESIGNED BY: S. BOYINGTON CHECKED BY: S. HALLORAN
 ABUT. 2 WINGWALL REINFORCEMENT - 1 SHEET 100 OF 156