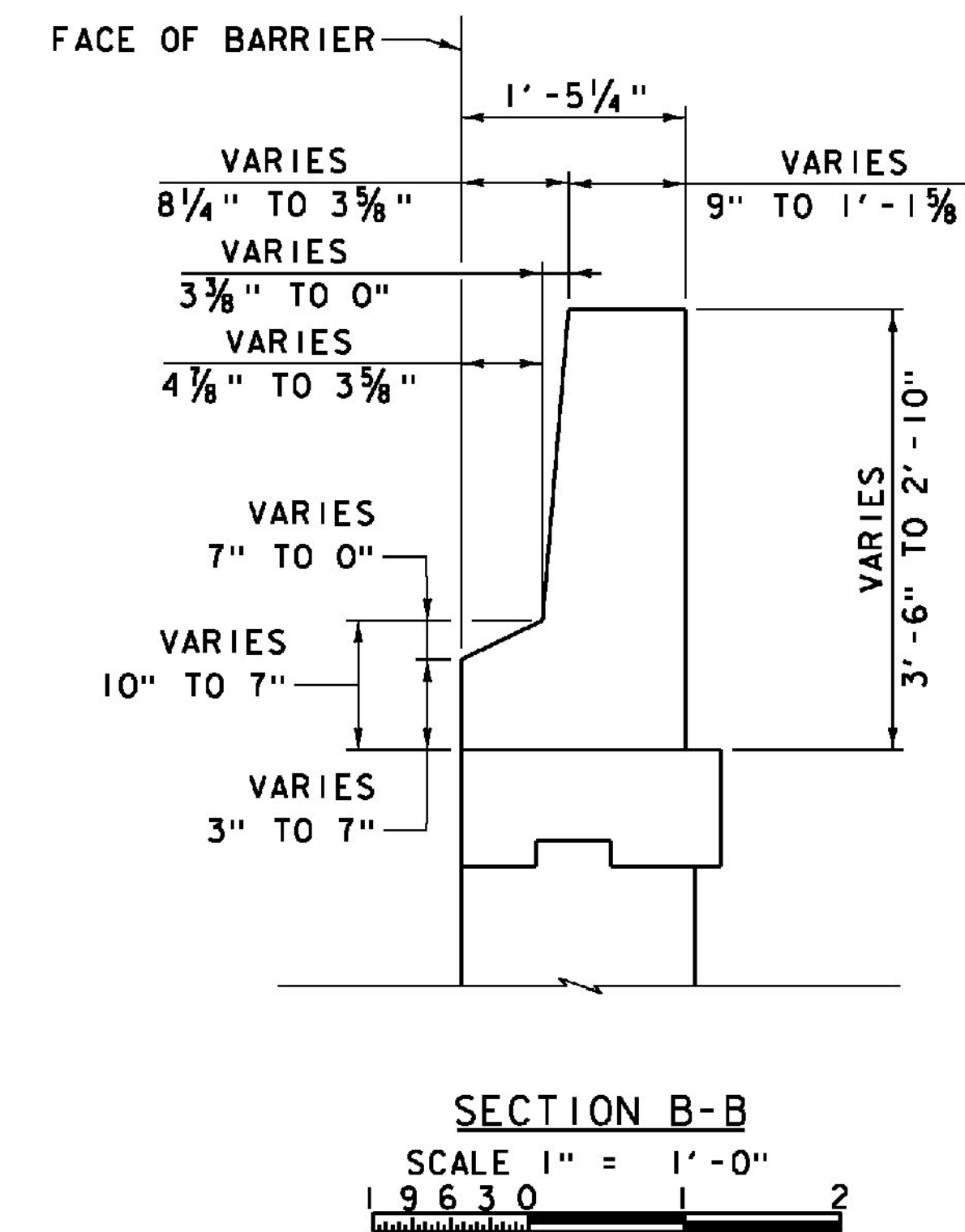
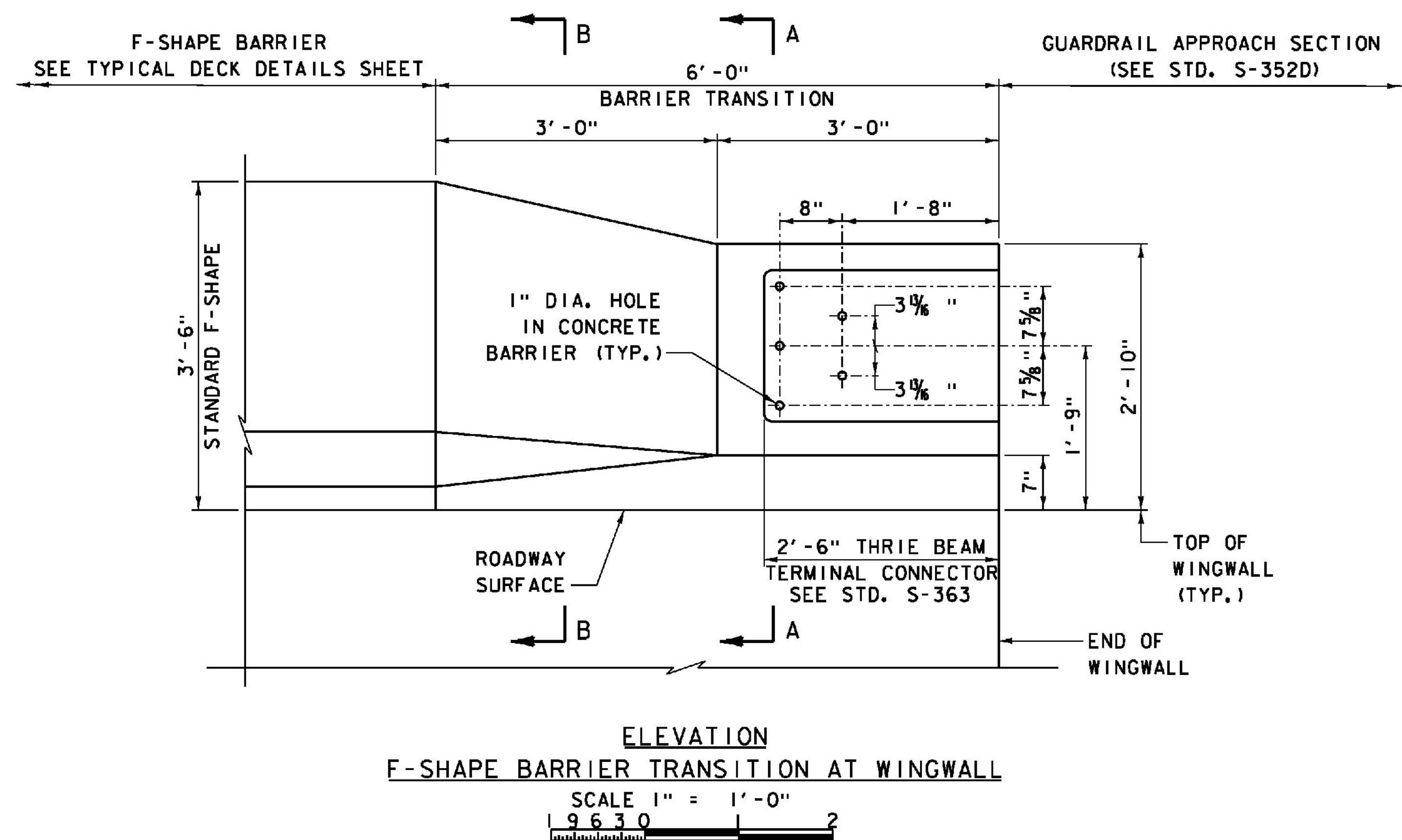
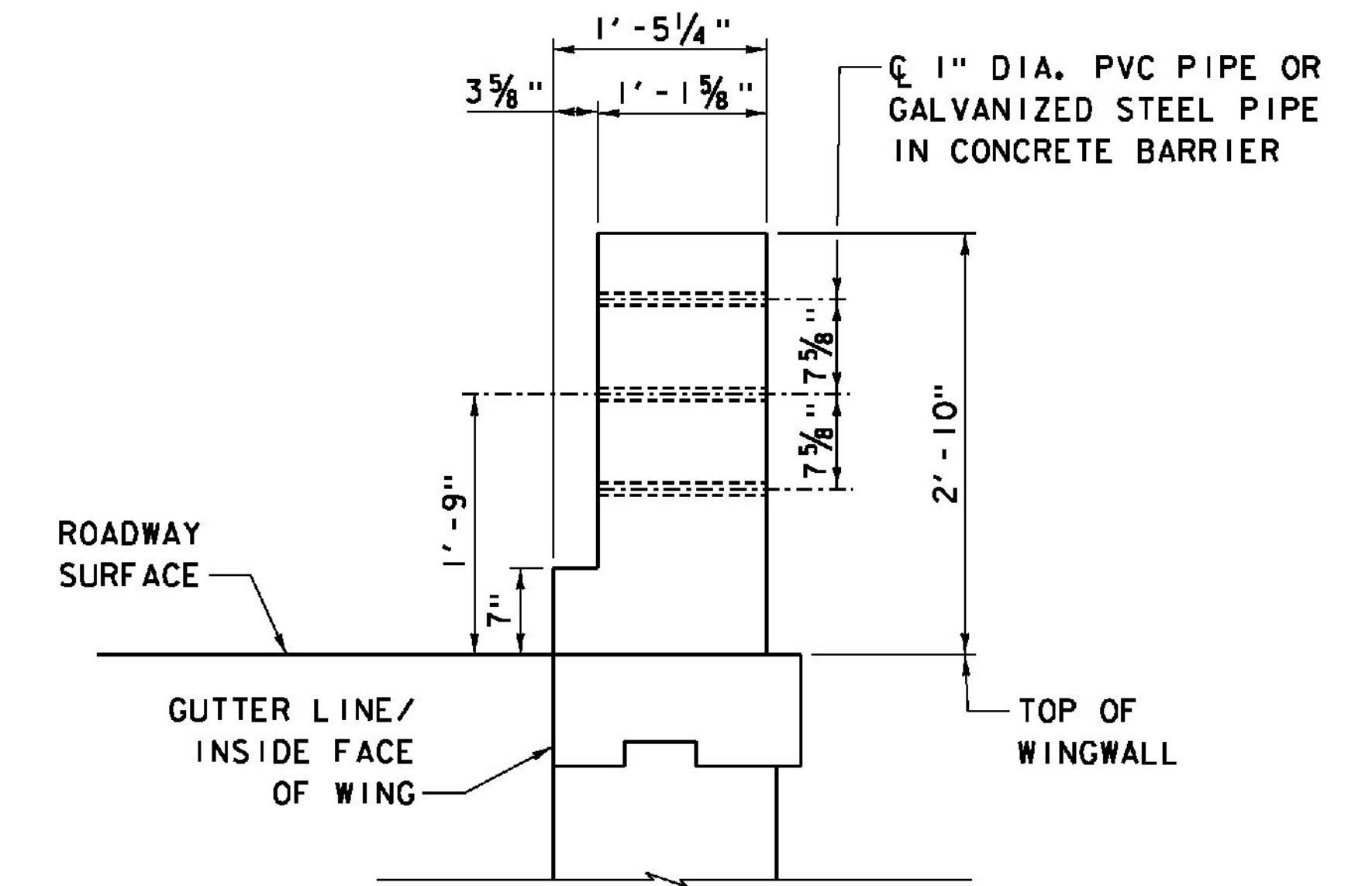
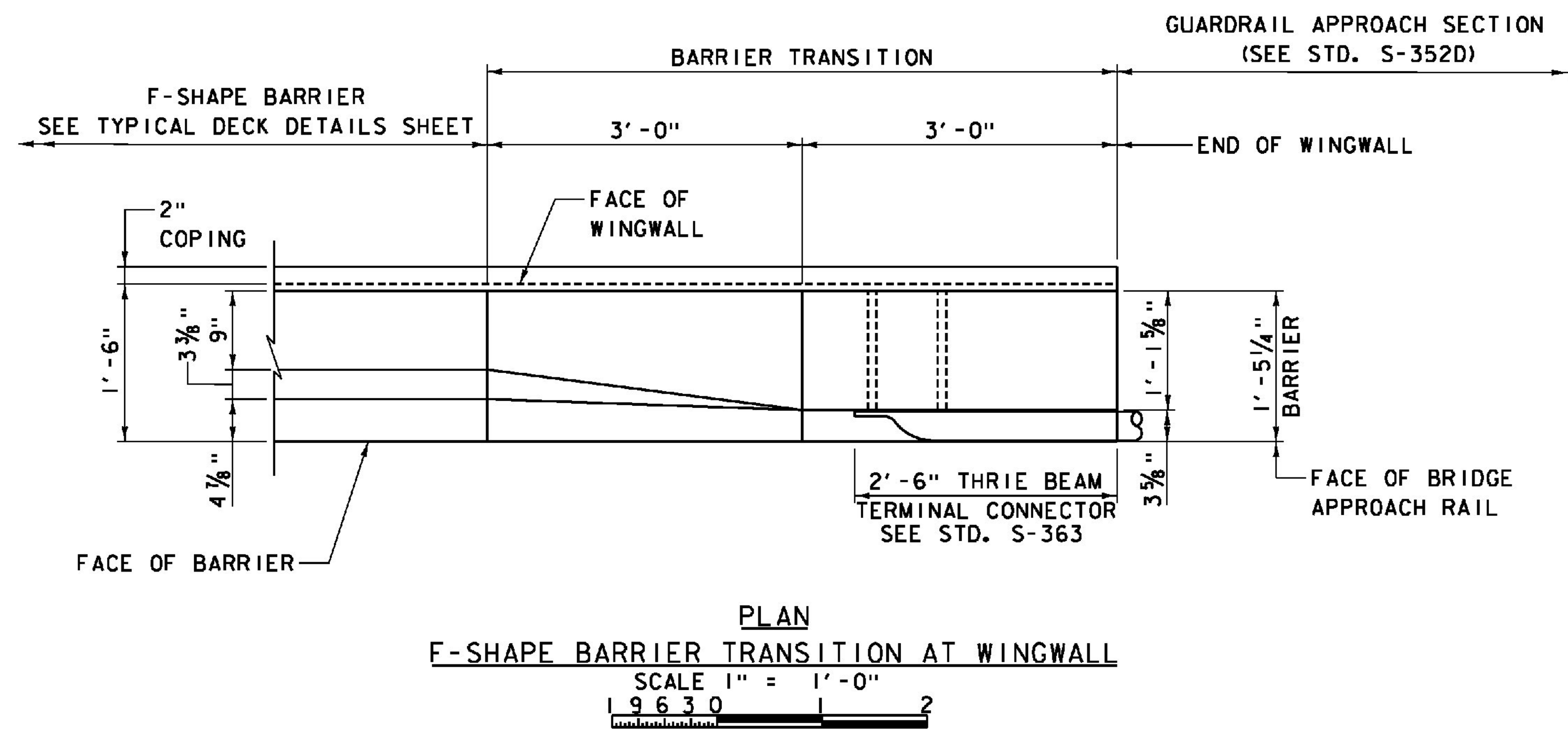


ITEMS USED ON THIS SHEET	
ITEM NO.	DESCRIPTION
900.608	BRIDGE RAILING, CONCRETE F-SHAPE



**NOTE:**

1. CONCRETE FOR F-SHAPE BARRIER TRANSITION SHALL BE HPC, LOW SHRINKAGE.
2. REINFORCING STEEL IN F-SHAPE BARRIER SHALL BE SOLID STAINLESS STEEL CONFORMING TO ASTM A995M, GRADE 420 (GRADE 60).
3. SEE F-SHAPE BARRIER TRANSITION REINFORCEMENT DETAILS SHEET FOR ADDITIONAL INFORMATION.
4. FOR GUARDRAIL DETAILS, SEE WP 7A ROADWAY IMPROVEMENTS DESIGN.

PROJECT NAME: WINDSOR	FILE NAME: z10o188FBD1.dgn	PLOT DATE: 7/30/2015
PROJECT NUMBER: IM 091-1(64)	PROJECT LEADER: J. WILSON	DRAWN BY: S. GUNN
	DESIGNED BY: S. BOYINGTON	CHECKED BY: S. HALLORAN
	F-SHAPE BARRIER TRANSITION DETAILS I	SHEET 84 OF 156