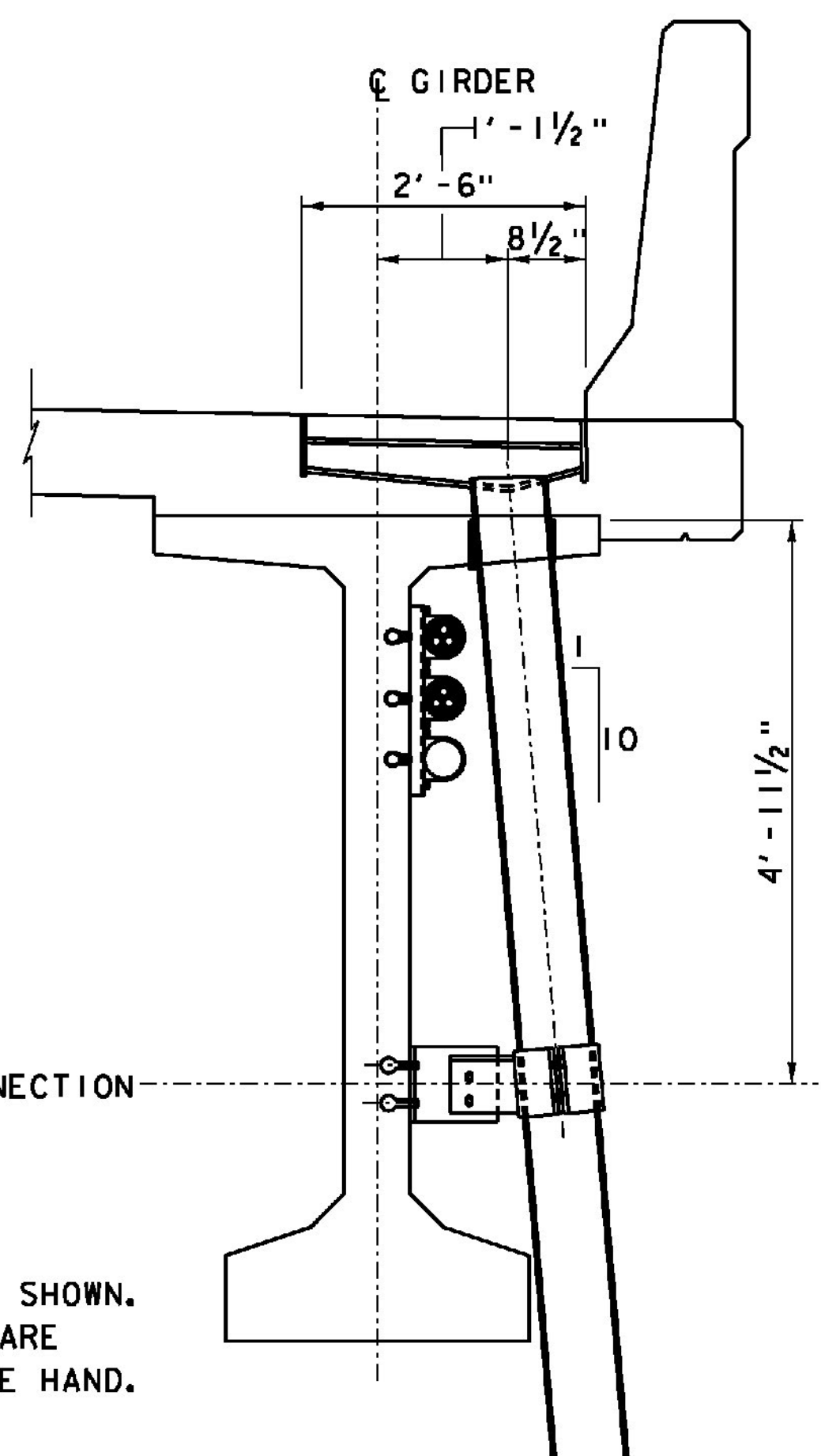
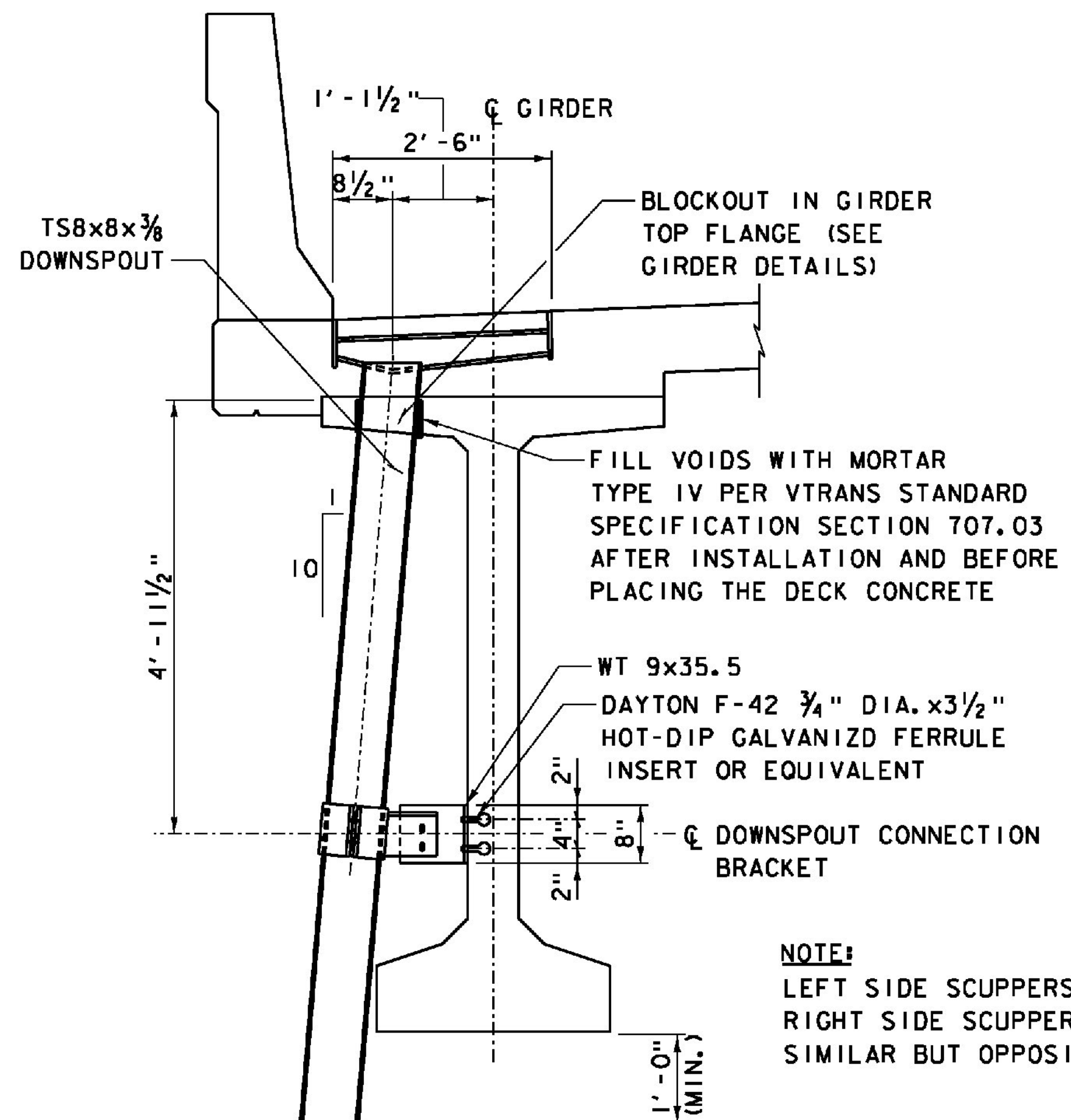


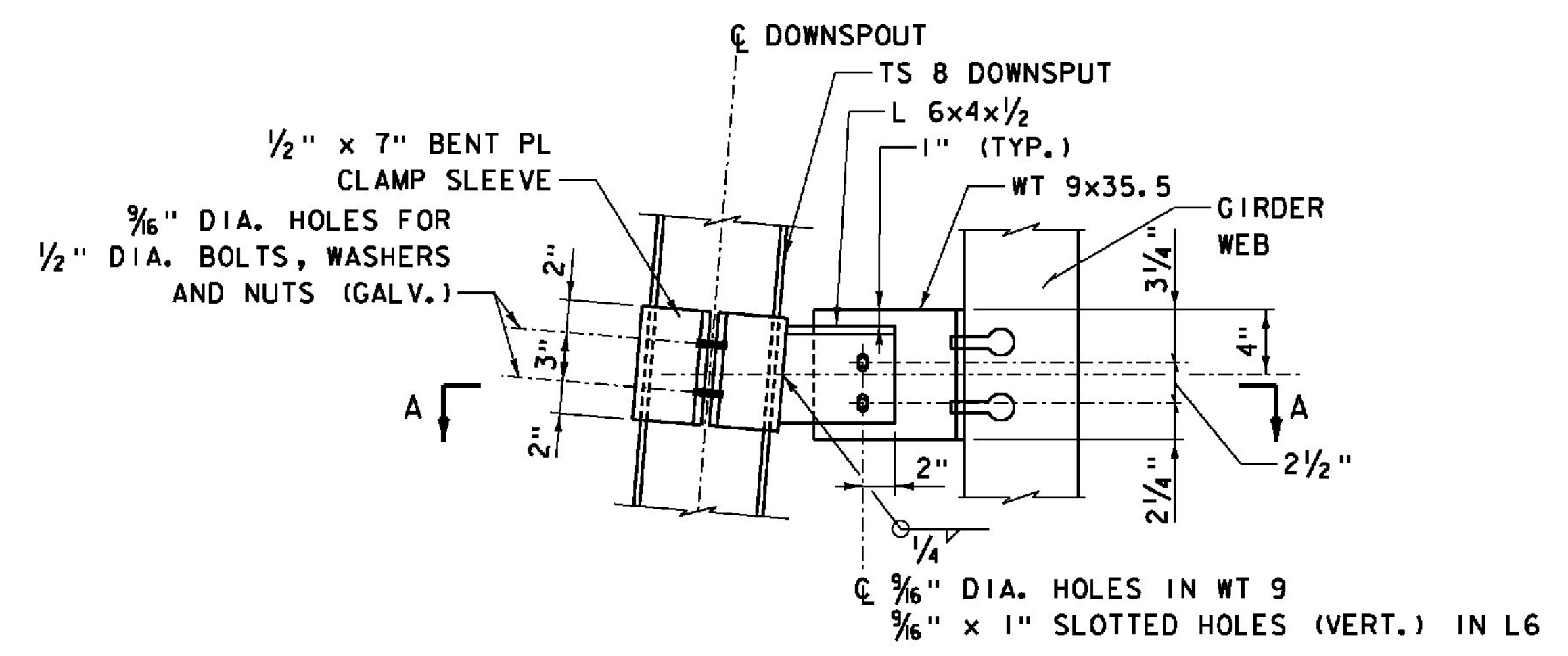
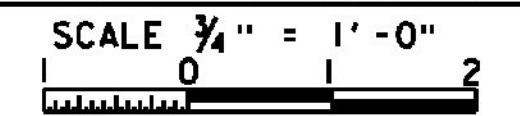
ITEMS USED ON THIS SHEET	
ITEM NO.	DESCRIPTION
900.620	BRIDGE SCUPPER ASSEMBLY



SECTION AT BRIDGE SCUPPER - BRIDGE 33S

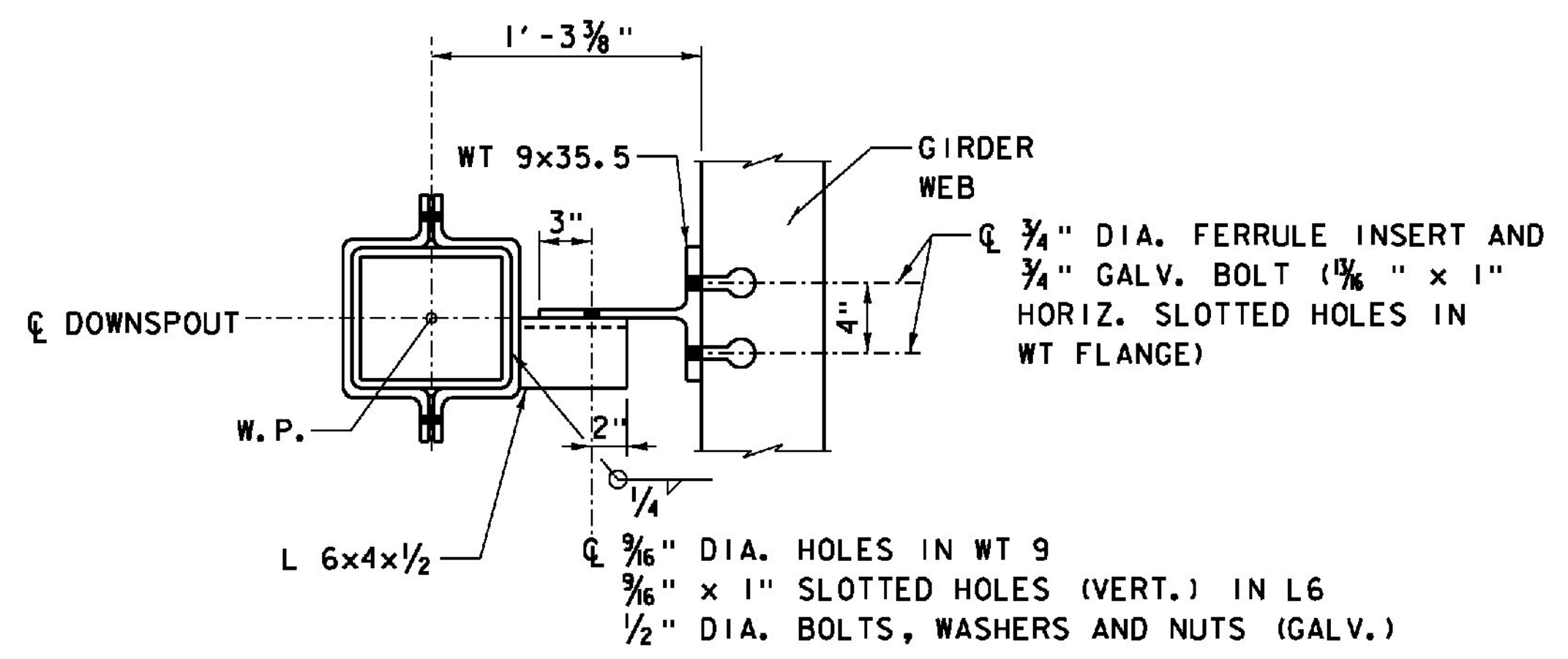
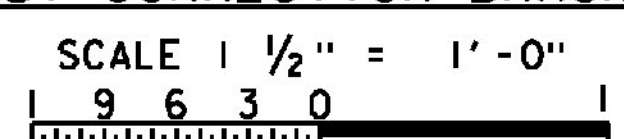


SECTION AT BRIDGE SCUPPER - BRIDGE 33N

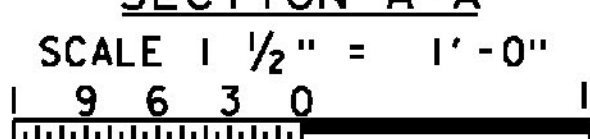


NOTE: THE FABRICATED CONNECTION BRACKET SHALL BE HOT-DIPPED GALVANIZED IN ACCORDANCE WITH VTRANS STANDARD SPECIFICATION SECTION 506.15.

DOWNSPOUT CONNECTION BRACKET DETAIL



SECTION A-A



NOTES:

- FOR SCUPPER LAYOUT, SEE PLAN - BRIDGE 33S AND PLAN - BRIDGE 33N SHEETS.
- FOR ADDITIONAL SCUPPER DETAILS, SEE BRIDGE DRAINAGE SHEET 2.
- ALL STEEL PLATES SHALL BE ASTM A 572 Gr50 OR ASTM A 588 AND SQUARE TUBE SHALL BE ASTM A 500 GRADE B.
- ALL WELDS SHALL BE CONTINUOUS. ALL JOINTS SHALL BE WELDED USING TWO-SIDED 1/4" FILLET WELDS OR 1/4" PJP WELDS WITH A BACKING SEAL WELD, AS APPLICABLE.
- ALL STEEL TO BE HOT-DIP GALVANIZED IN CONFORMANCE WITH AASHTO M11 (ASTM 123) AFTER FABRICATION.
- THE SCUPPERS SHALL BE BLOCKED UP OFF THE FORMS SO AS TO LOCATE TOP OF SCUPPER 1/8" BELOW TOP SURFACE OF SLAB AS SHOWN.
- STRUCTURAL SLAB CONCRETE IMMEDIATELY ADJACENT TO SCUPPERS SHALL BE THOROUGHLY VIBRATED DURING PLACEMENT TO ELIMINATE VOIDS WHICH COULD RESULT IN PREMATURE CONCRETE DETERIORATION.
- GALVANIZED SURFACES DAMAGED DURING CONSTRUCTION SHALL BE REPAIRED IN CONFORMANCE WITH ASTM A780.
- CONNECTION HOLES IN STEEL SHALL BE REAMED AS REQUIRED PRIOR TO GALVANIZING TO ACCOMMODATE BOLT INSTALLATION.
- FOR LOCATION AND DETAILS OF SPLASH PAD BELOW SCUPPERS, SEE ROADWAY DRAWINGS.

PROJECT NAME: WINDSOR	PLOT DATE: 7/30/2015
PROJECT NUMBER: IM 091-1(64)	DRAWN BY: N. GARCIA III
FILE NAME: z10o188BDRN1.dgn	CHECKED BY: S. HALLORAN
PROJECT LEADER: J. WILSON	SHEET 81 OF 156
DESIGNED BY: R. PEIN	BRIDGE DRAINAGE - SHEET 1