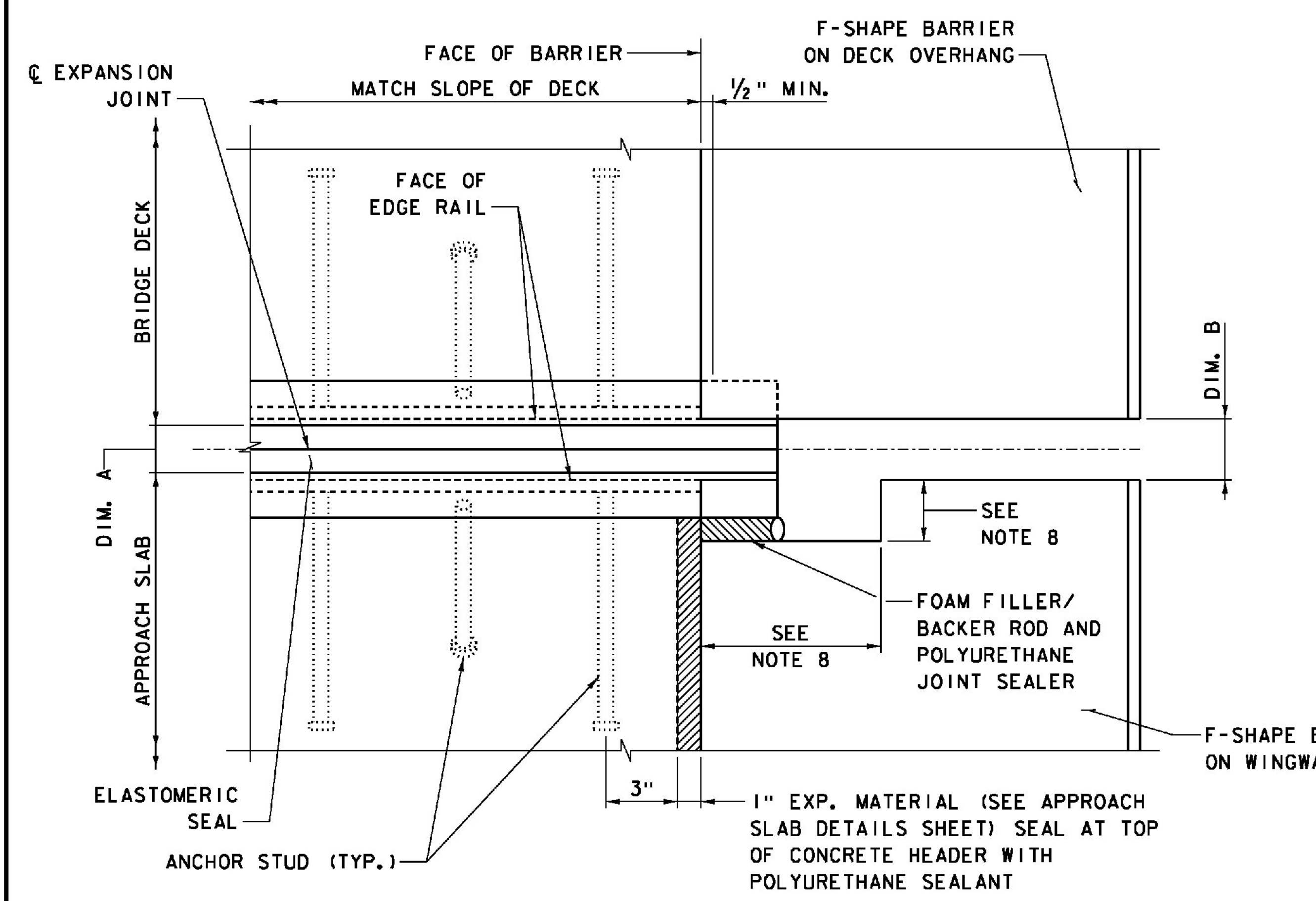
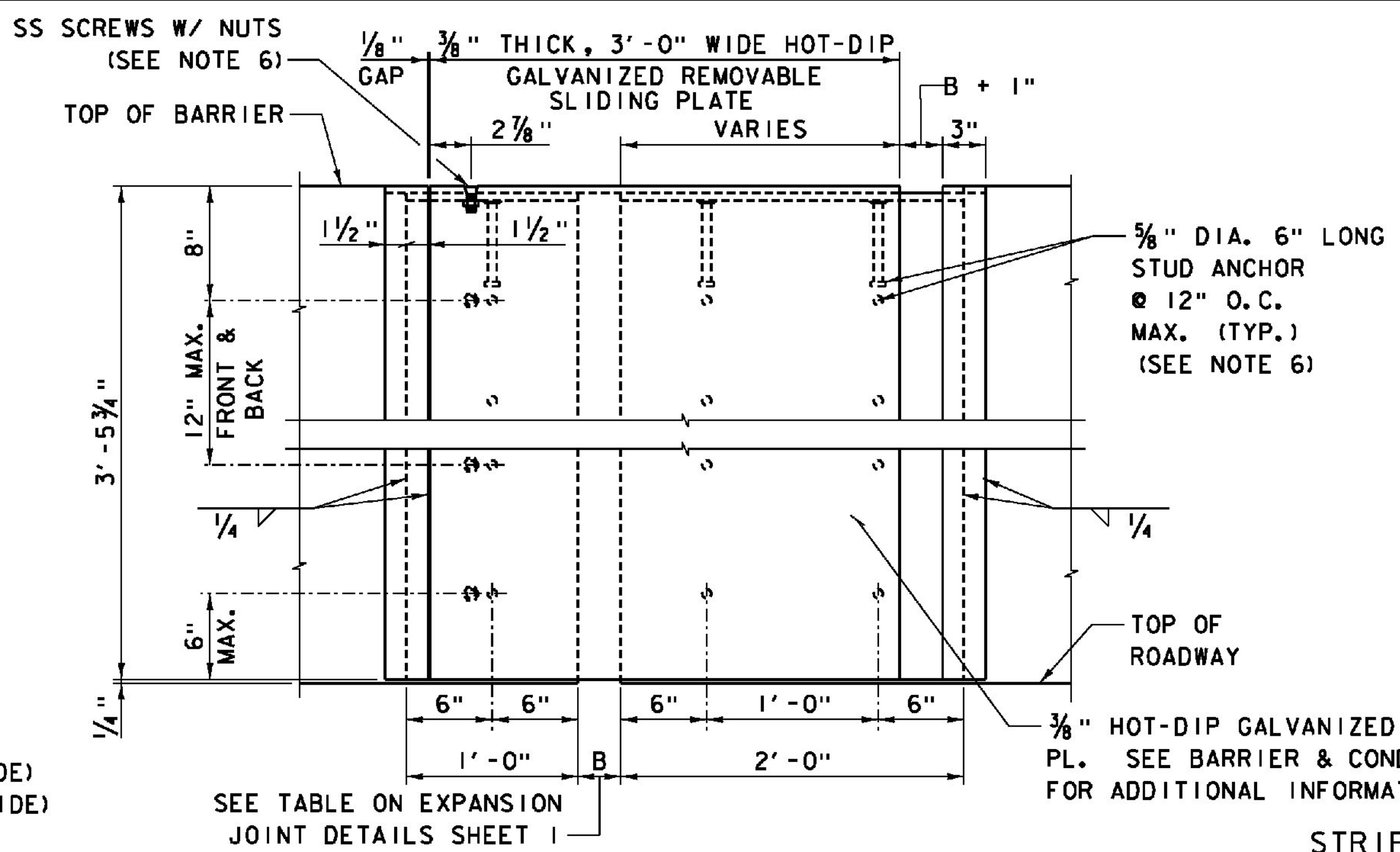


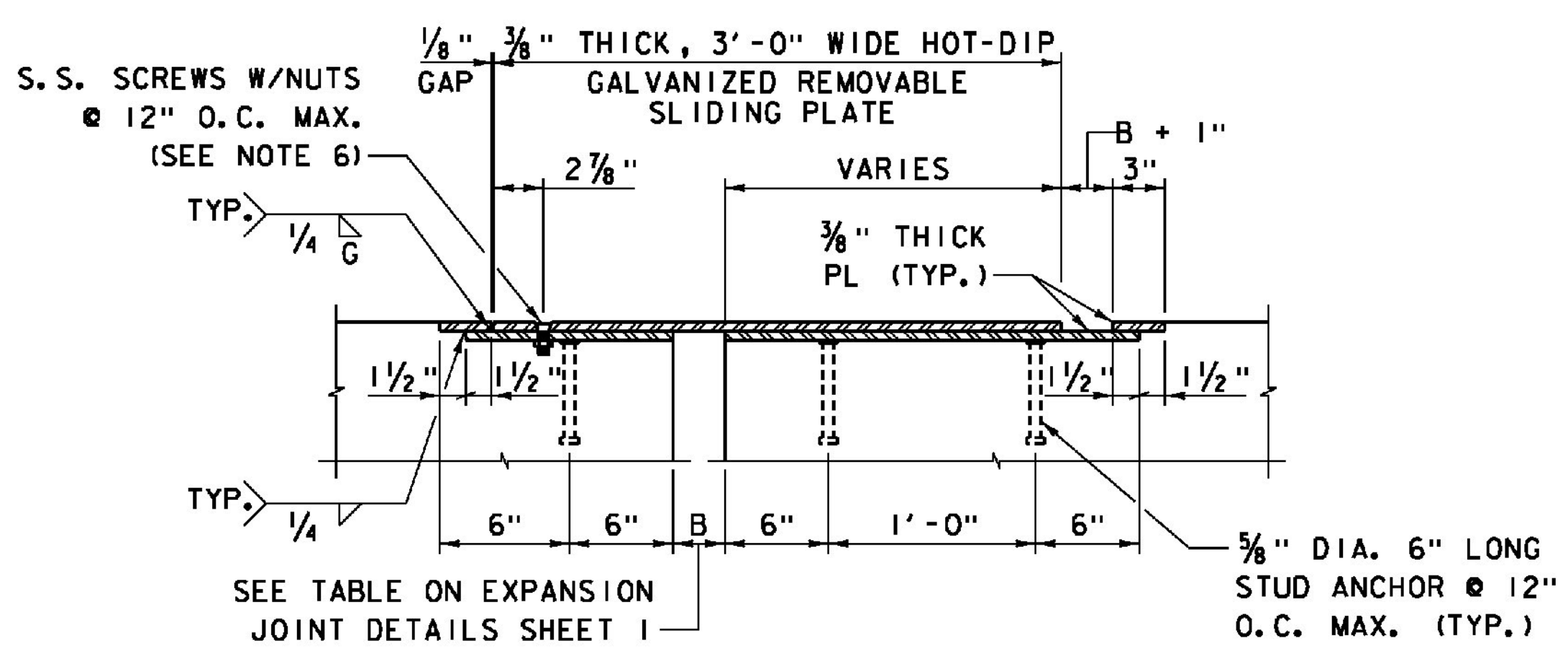
PARTIAL SECTION ALONG Q JOINT
NOT TO SCALE



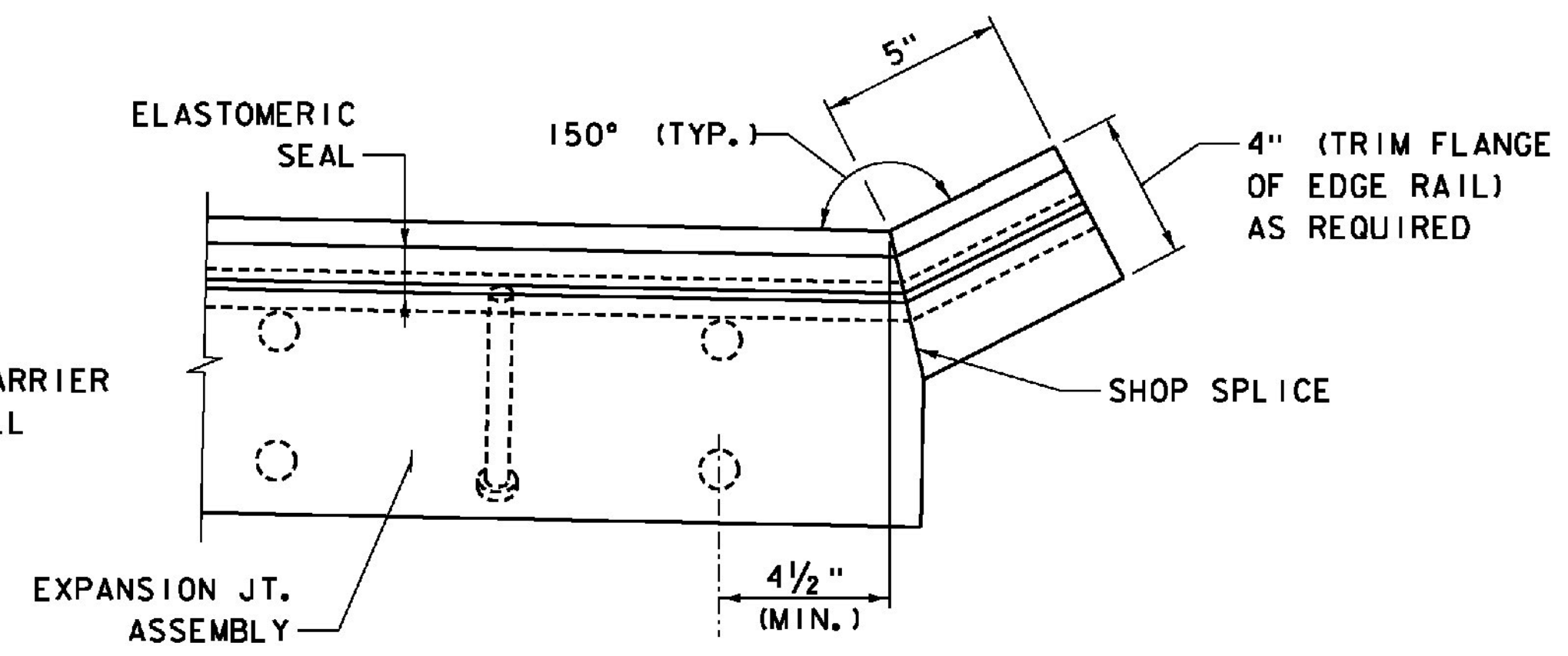
PARTIAL PLAN VIEW OF JOINT
NOT TO SCALE



BARRIER SLIDING STEEL COVER PLATE - ELEVATION
NOT TO SCALE



BARRIER SLIDING STEEL COVER PLATE - SECTION
NOT TO SCALE



UPTURN DETAIL
NOT TO SCALE

- STRIP SEAL EXPANSION JOINT NOTES:**
1. THE DETAILS SHOWN HERE ARE INTENDED AS A GENERAL GUIDE FOR A TYPICAL GLANDULAR TYPE STRIP SEAL JOINT SYSTEM. SHOP DRAWINGS WHICH INCLUDE DETAILS OF THE GLAND SHAPE, STEEL EXTRUSION SHAPE, WELDING PROCEDURE SPECIFICATIONS, ANCHOR ARRANGEMENT, TEMPERATURE CORRECTION REQUIREMENTS, AND TEMPORARY SUPPORT DETAILS SHALL BE SUBMITTED FOR APPROVAL OF THE ENGINEER ACCORDING TO THE SPECIAL PROVISIONS.
 2. ALL STRUCTURAL STEEL COMPONENTS SHALL CONFORM TO AASHTO M270 GRADE 36. AFTER THE COMPLETION OF ALL WELDING OPERATIONS, STEEL PLATE ASSEMBLIES SHALL BE HOT-DIP GALVANIZED IN CONFORMANCE WITH AASHTO M111.
 3. CONCRETE BLOCKOUT SHALL BE SANDBLASTED, CLEANED WITH COMPRESSED OIL LESS AIR, AND PRIMED WITH BONDING COMPOUND PRIOR TO CASTING BLOCKOUT CONCRETE.
 4. NEOPRENE STRIP SEAL SHALL BE BONDED TO STEEL EXTRUSION WITH APPROVED ADHESIVE.
 5. INSTALL CONTINUOUS NEOPRENE STRIP SEAL IN THE FIELD. SPLICING OF SEAL IS NOT PERMITTED.
 6. 3/4" DIA. STAINLESS STEEL FLAT HEAD MACHINE SCREWS & STAINLESS STEEL NUTS. RECESS 1/16" BELOW PLATE SURFACE. PRIOR TO PLACEMENT OF SAFETY CURB CONCRETE, LUBRICATE STAINLESS STEEL SCREWS WITH GRAPHITE AND SET SECURELY IN PLACE. MACHINE SCREWS TO BE TEMPORARILY REMOVED AFTER CONCRETE HAS ATTAINED FINAL SET.
 7. NO WELDING OF PORTIONS OF STEEL EXTRUSIONS IN DIRECT CONTACT WITH NEOPRENE SEAL SHALL BE PERMITTED.
 8. THE WINGWALL ADJACENT TO THE EXPANSION JOINT SHALL BE CONSTRUCTED TO INCLUDE A BLOCKOUT TO ACCOMMODATE DIFFERENTIAL MOVEMENT BETWEEN WINGWALL AND APPROACH SLAB. BLOCKOUT DIMENSIONS SHALL BE ESTABLISHED BASED ON THE ACTUAL EXPANSION JOINT SYSTEM BEING INSTALLED. REQUIRED BLOCKOUT DIMENSIONS SHALL BE INCLUDED ON EXPANSION JOINT SHOP DRAWINGS AND SUBMITTED FOR APPROVAL PRIOR TO CONSTRUCTION.

PROJECT NAME: WINDSOR	FILE NAME: z10o188ExpDet2.dgn	PLOT DATE: 7/30/2015
PROJECT NUMBER: IM 091-1(64)	PROJECT LEADER: J. WILSON	DRAWN BY: N. GARCIA III
	DESIGNED BY: R. PEIN	CHECKED BY: S. HALLORAN
	EXPANSION JOINT DETAILS 2	SHEET 80 OF 156