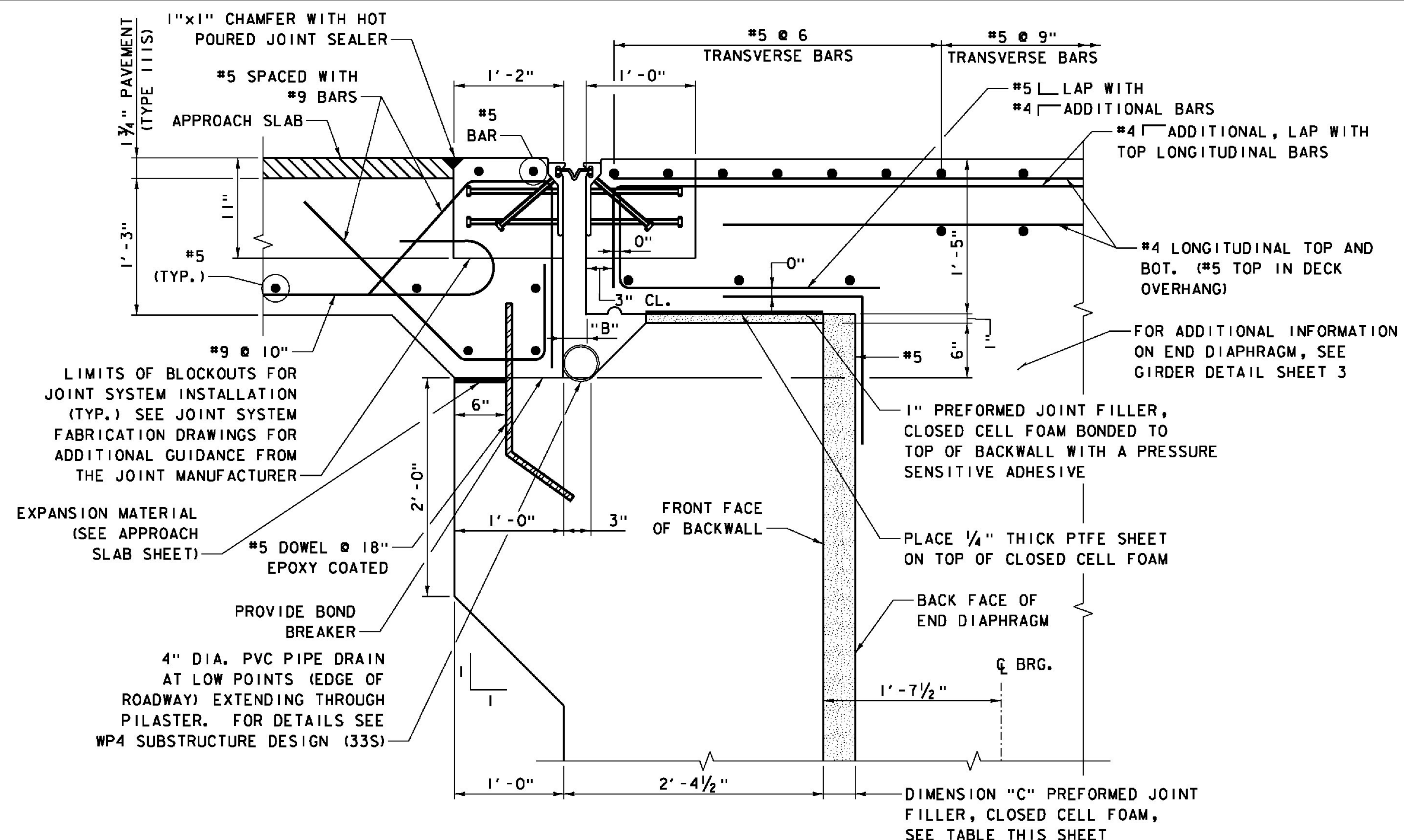
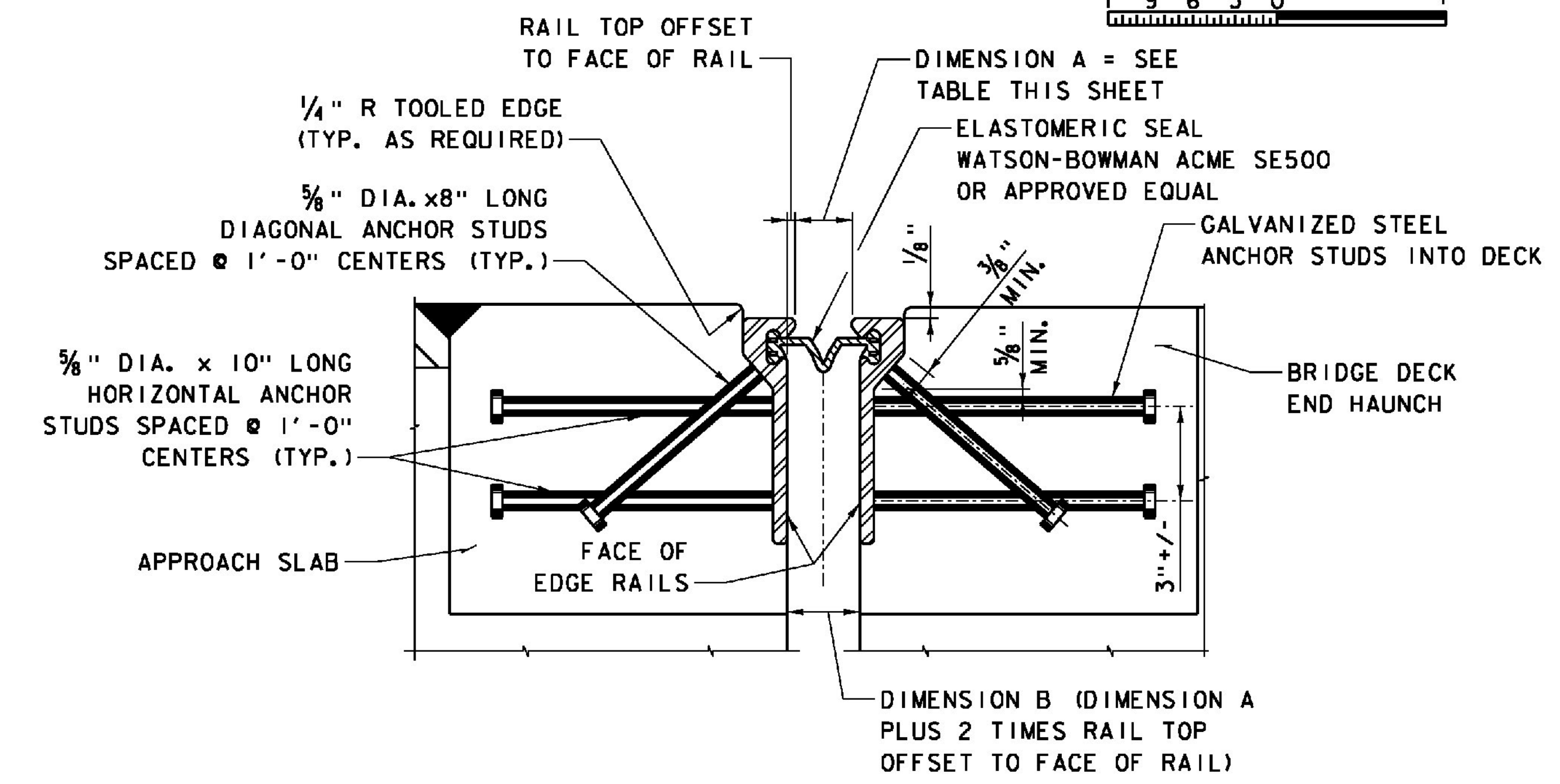
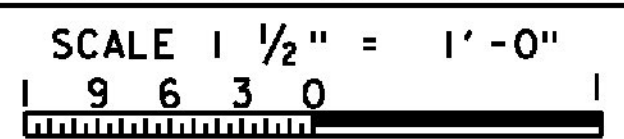


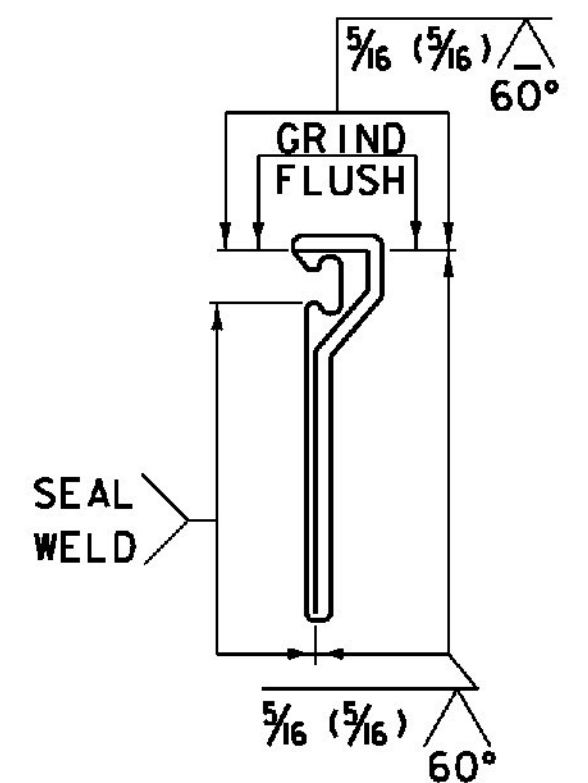
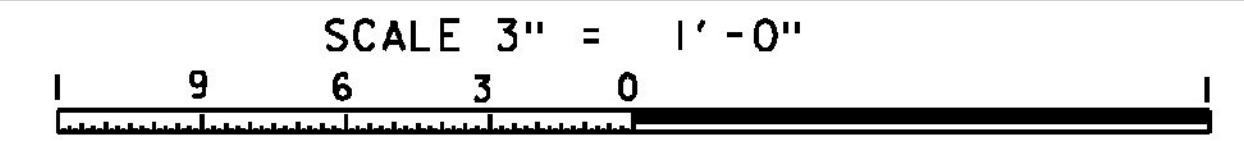
ITEMS USED ON THIS SHEET	
ITEM NO.	DESCRIPTION
900.640	BRIDGE EXPANSION JOINT, STRIP SEAL
524.21	JOINT SEALER, POLYURETHANE



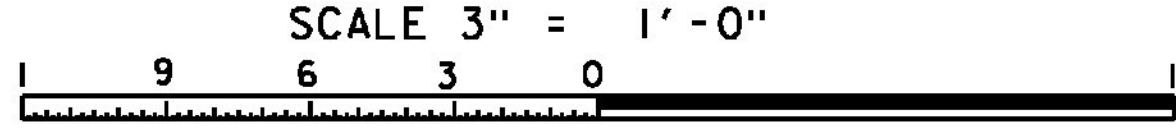
TYPICAL SECTION BETWEEN GIRDERS



TYPICAL SECTION THRU STRIP SEAL EXPANSION JOINT



SHOP SPLICE DETAIL



GENERAL NOTES:

- EXPANSION JOINT EDGE RAILS DETAILED ON THIS DRAWING ARE BASED ON WATSON-BOWMAN ACME STEEL EDGE MEMBER P. ACTUAL STRIP SEAL EXPANSION JOINT SYSTEM SHALL BE SUBMITTED AS A SHOP DRAWING FOR APPROVAL. SEE ITEM 900.640 SPECIAL PROVISION (BRIDGE EXPANSION JOINT, STRIP SEAL) FOR EXPANSION JOINT SYSTEM REQUIREMENTS.
- RECESS THE EDGE RAIL 1/8" BELOW THE DECK SURFACE AS SHOWN.
- ALL REINFORCEMENT STEEL IN THE DECK SHALL BE SOLID STAINLESS STEEL IN CONFORMANCE WITH ASTM A955M, GRADE 420 (GRADE 60). REINFORCEMENT IN THE APPROACH SLAB SHALL BE ASTM A615 GRADE 60, EPOXY COATED.
- PREFORMED JOINT FILLER, CLOSED CELL FOAM SHALL BE W.R. MEADOWS CERAMAR FLEXIBLE FOAM EXPANSION JOINT OR APPROVED EQUAL. IT SHALL HAVE A COMPACTED CLOSED CELL STRUCTURE COMPOSED OF SYNTHETIC ISOMERIC POLYMERS AND SHALL BE GRAY IN COLOR. IT SHALL OFFER SUFFICIENT HEAT RESISTANCE SO THAT IT IS COMPATIBLE WITH HOT APPLIED SEALING COMPOUNDS. IT SHALL MEET THE REQUIREMENTS OF SECTION 5.1 THROUGH 5.4 OF ASTM D1752, WITH THE COMPRESSION REQUIREMENT MODIFIED TO 10 psi MINIMUM TO 25 psi MAXIMUM. TYPICAL PHYSICAL PROPERTIES, AS DETERMINED USING TEST METHOD ASTM D545, SHALL BE AS FOLLOWS:
 COMPRESSION, 50%.....13 psi
 EXTRUSION.....0.1 inch
 RECOVERY.....99.21%
 WATER ABSORPTION, VOLUME.....0.246%
- FURNISHING AND INSTALLING THE EXPANSION JOINT SHALL BE IN ACCORDANCE WITH ITEM 900.640 SPECIAL PROVISION (BRIDGE EXPANSION JOINT, STRIP SEAL) AND THE APPLICABLE REQUIREMENTS OF SECTION 516 OF THE 2006 VTRANS STANDARD SPECIFICATIONS.
- THE JOINT SYSTEM SHALL BE LIFTED AND LOWERED INTO FINAL POSITION AND SUPPORTED FROM ABOVE USING STRONGBACKS AND LEVELING DEVICES AS SPECIFIED BY THE JOINT MANUFACTURER ON THE FABRICATION DRAWINGS.
- THE ELASTOMERIC SEAL/GLAND SHALL HAVE A MOVEMENT RANGE OF 5 INCHES MINIMUM AND SHALL BE INSTALLED IN ONE CONTINUOUS PIECE PER MANUFACTURERS INSTRUCTIONS.
- THE GAP BETWEEN FACE OF BACKWALL AND END DIAPHRAGM (DIMENSION "C") AND THE GAP BETWEEN DECK END OVERHANG AND APPROACH SLAB (DIMENSION "B") SHALL BE SET IN ACCORDANCE WITH THE JOINT GAP DIMENSION TABLE BELOW.

NOTES:

- DIMENSION "A" IS MEASURED PERPENDICULAR TO ϕ EXPANSION JOINT.
- TEMPERATURE IS AVERAGE AMBIENT TEMPERATURE DURING THE 24 HOUR PERIOD IMMEDIATELY PRECEDING FINAL SET OF JOINT INSTALLATION. THE USE OF CONCRETE THERMOMETERS SHALL BE UTILIZED TO DETERMINE AVERAGE CONCRETE TEMPERATURE OF THE DECK AND GIRDER TO COMPARE WITH THE AVERAGE 24-HOUR AMBIENT TEMPERATURE.
- DIMENSION "C" IS THE ANTICIPATED GAP BETWEEN THE FRONT FACE OF BACKWALL AND THE END DIAPHRAGM AND MUST BE FOLLOWED TO ENSURE PROPER EXPANSION JOINT DESIGN.

JOINT GAP DIMENSION TABLE		
TEMP (°F)	DIMENSION "A" (IN)	DIMENSION "C" (IN)
0	3 7/8	5 3/8
20	3 3/8	4 7/8
40	2 5/8	4 1/8
60	2 1/8	3 5/8
80	2	3 1/2

PROJECT NAME: WINDSOR	PLOT DATE: 7/30/2015
PROJECT NUMBER: IM 091-1(64)	DRAWN BY: N. GARCIA III
FILE NAME: z10o188ExpDet1.dgn	CHECKED BY: S. HALLORAN
PROJECT LEADER: J. WILSON	SHEET 79 OF 156
DESIGNED BY: R. PEIN	
EXPANSION JOINT DETAILS 1	