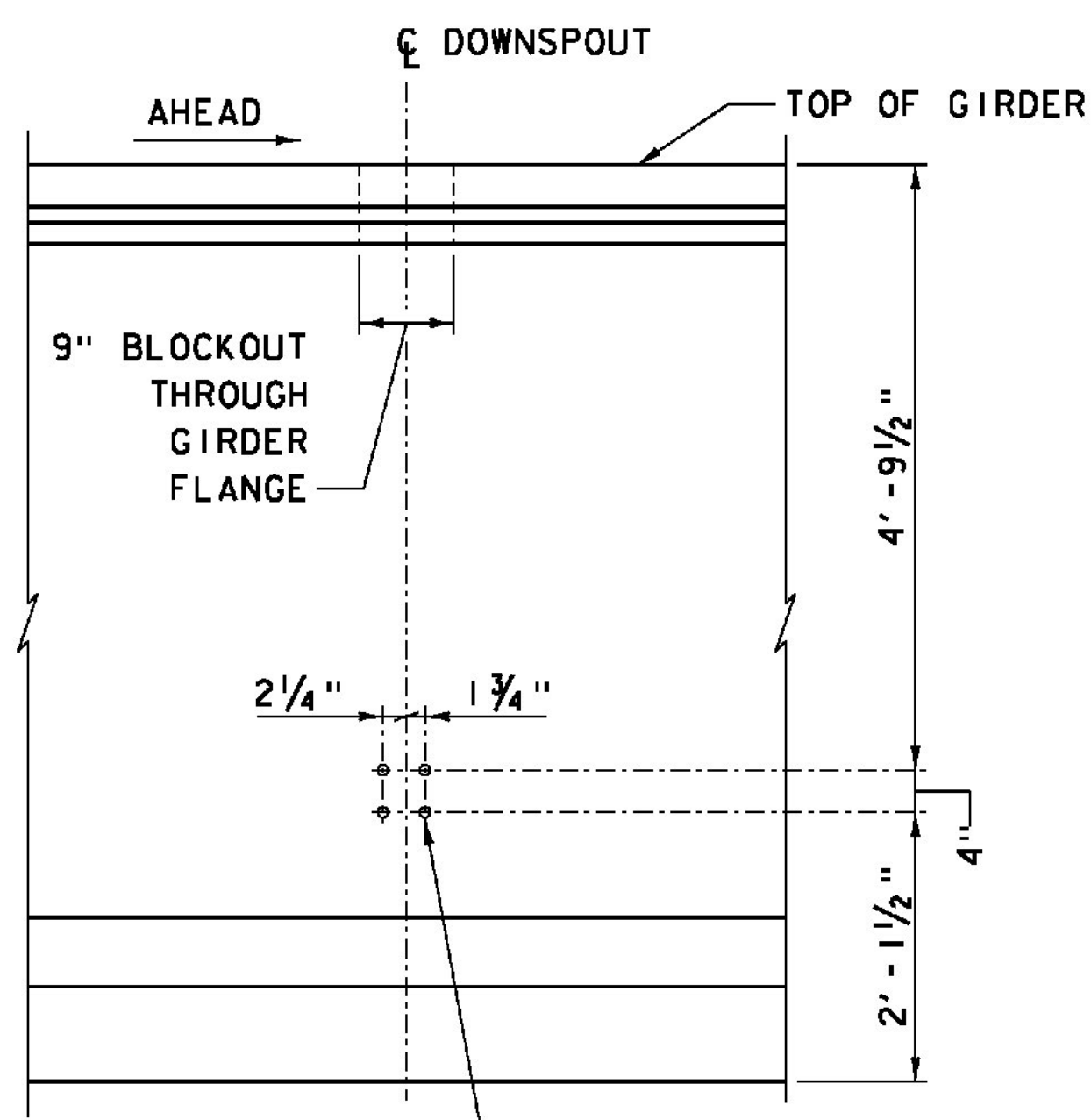
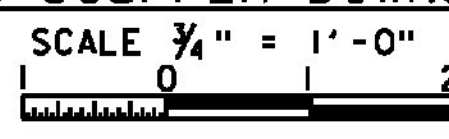


GIRDER	X	Y	GIRDER	X	Y
G1-1	109'-0"	-	G6-5	76'-0"	-
G1-2	119'-6"	-	G6-6	25'-0"	109'-0"
G1-4	49'-6"	-	G6-7	83'-0"	-
G5-1	76'-0"	-	G6-8	32'-0"	109'-0"
G5-2	25'-0"	109'-0"	G10-5	109'-0"	-
G5-3	83'-0"	-	G10-6	119'-6"	-
G5-4	32'-0"	109'-0"	G10-8	49'-6"	-

NOTE: ADJUST GIRDER TOP FLANGE AND WEB STIRRUP REINFORCEMENT AROUND OPENING

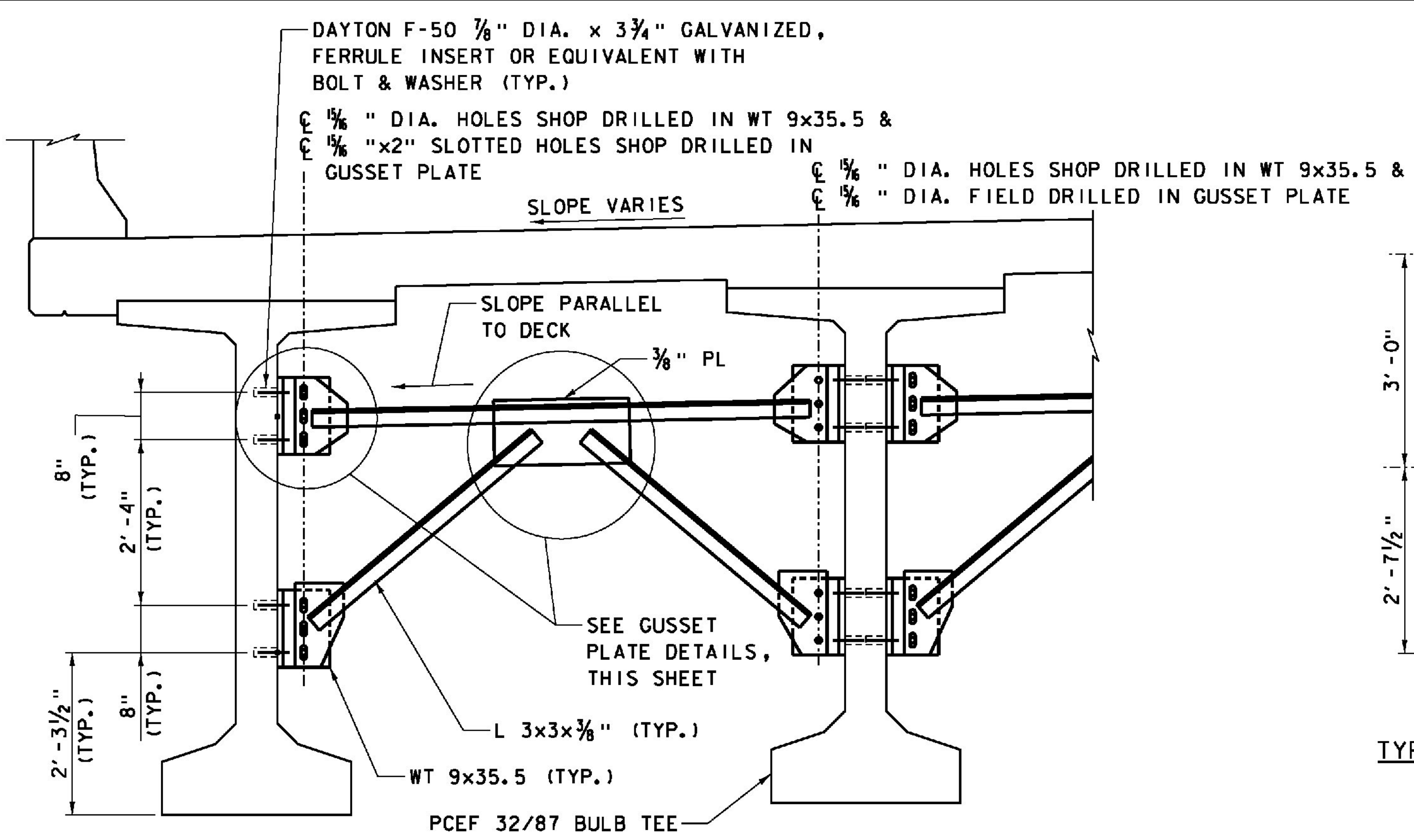
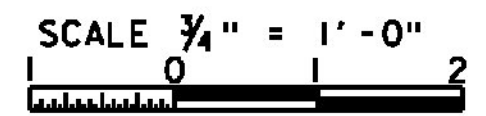
OPENINGS FOR SCUPPER DOWNSPOUTS - PLAN



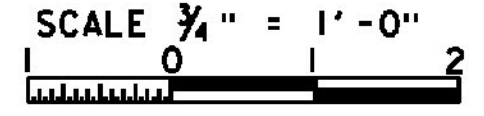
DAYTON F-42 3/4" DIA. x 3 1/2" HOT-DIP GALVANIZED FERRULE INSERT OR EQUIVALENT (TYP.) FOR DOWNSPOUT CONNECTION BRACKET

NOTES: FOR SCUPPER LAYOUT, SEE PLAN - BRIDGE 33S AND PLAN - BRIDGE 33N SHEETS. FOR SCUPPER DETAILS, SEE BRIDGE DRAINAGE SHEETS.

OPENINGS FOR SCUPPER DOWNSPOUTS - ELEVATION

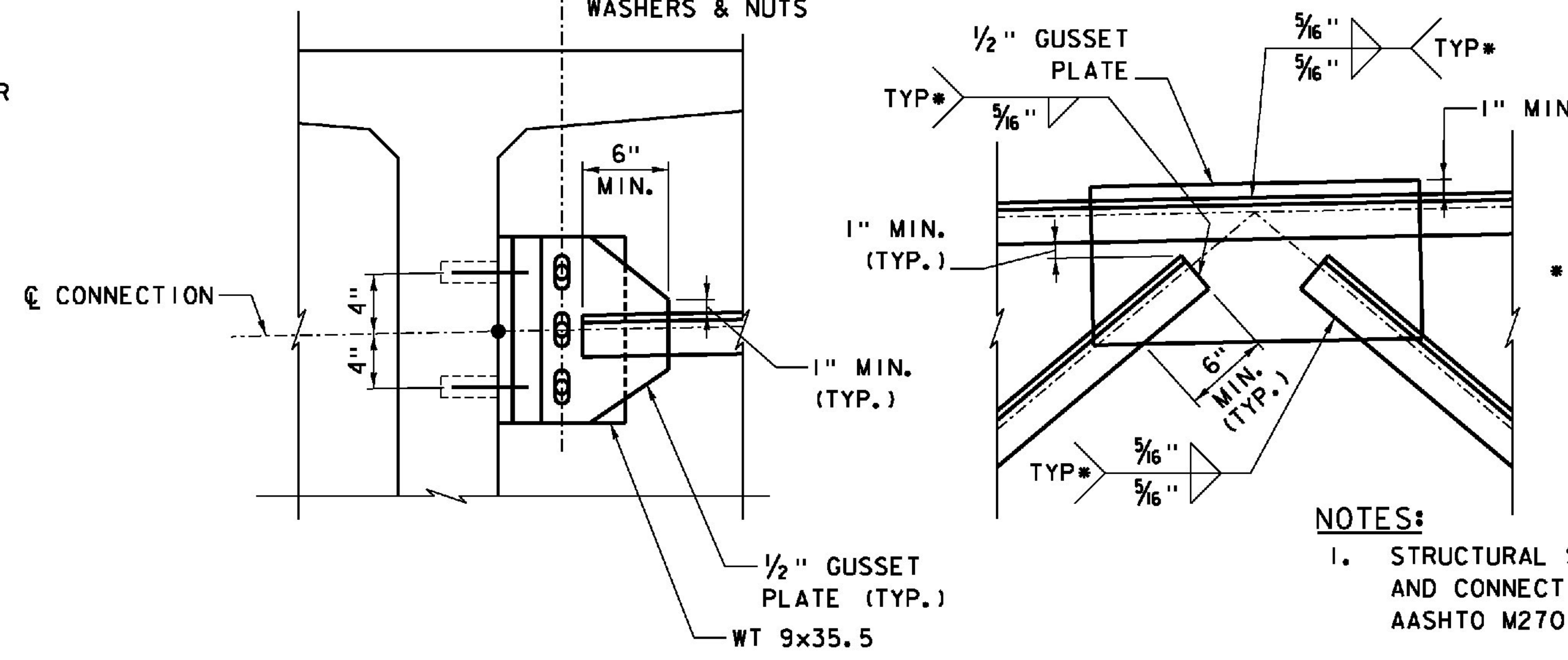


PARTIAL SECTION - INTERMEDIATE DIAPHRAGM



NOTE: ALL HOLES IN BOTH GUSSET PLATES AND CONNECTION WT SECTIONS ON NB BRIDGE WERE FIELD DRILLED.

5/8" DIA. HOLES SHOP DRILLED IN WT 9x35.5 & 5/8" x 2" SLOTTED HOLES SHOP DRILLED IN GUSSET PLATE FOR 3/8" DIA. H.S. BOLTS, WASHERS & NUTS

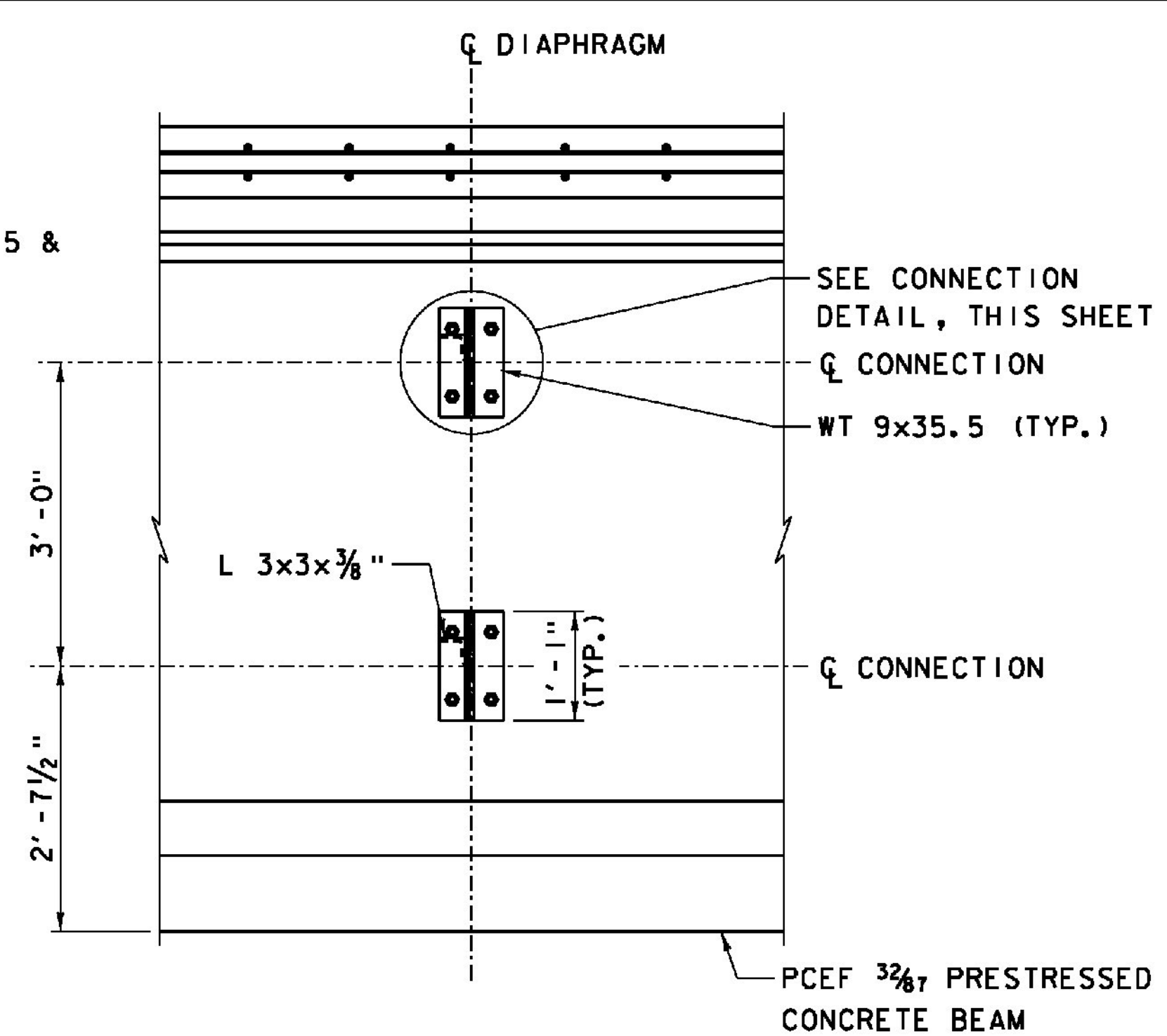


GUSSET PLATE DETAILS NOT TO SCALE

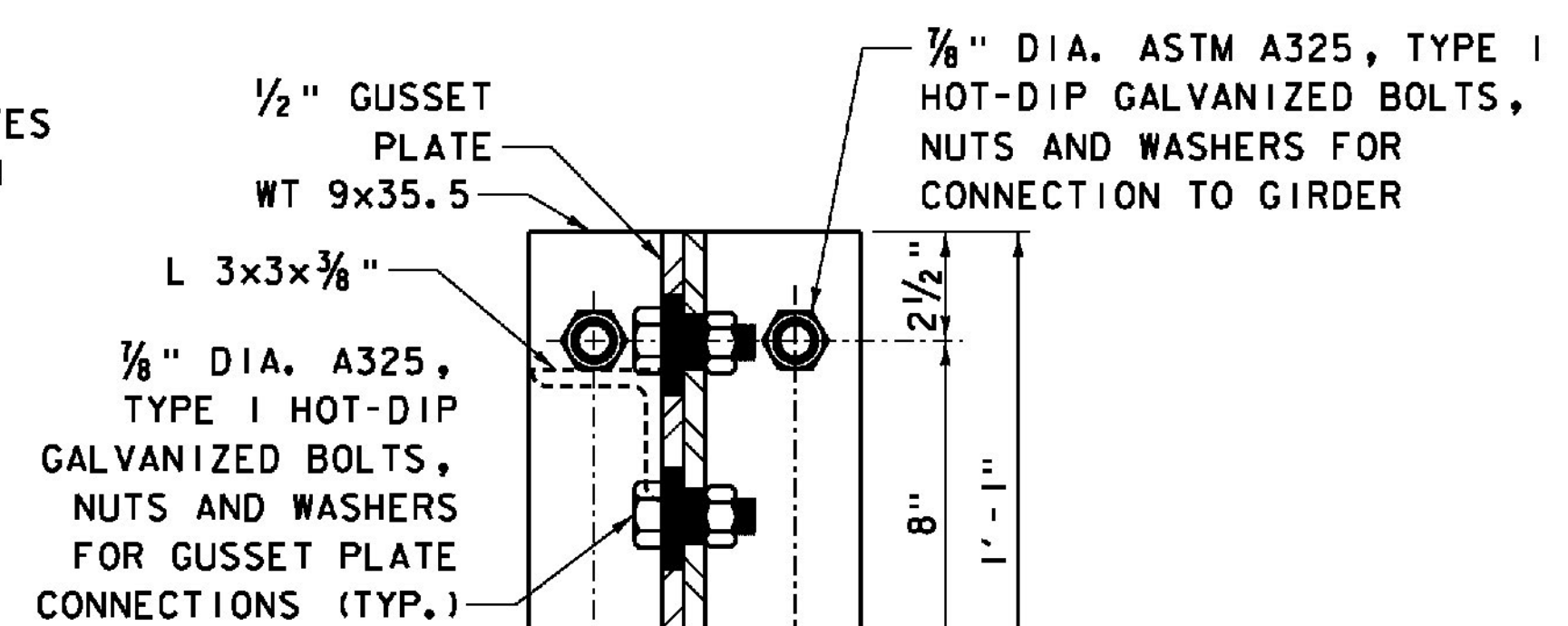
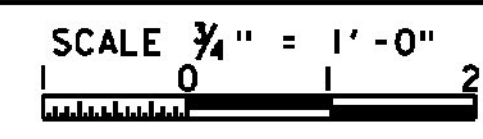
NOTES:

- STRUCTURAL STEEL FOR INTERMEDIATE DIAPHRAGM AND CONNECTION BRACKETS SHALL CONFORM TO AASHTO M270 GRADE 36.
- ALL BOLTS FOR DIAPHRAGM CONNECTIONS SHALL CONFORM TO AASHTO M164 (ASTM A325), TYPE 1. HEAVY HEX NUTS AND HARDENED WASHERS SHALL CONFORM TO AASHTO M292 AND M293, RESPECTIVELY.
- ALL STEEL PLATES AND SHAPES SHALL BE HOT-DIP GALVANIZED IN CONFORMANCE WITH AASHTO M111 (ASTM A123).

ITEMS USED ON THIS SHEET	
ITEM NO.	DESCRIPTION
506.60	STRUCTURAL STEEL
510.23	PRESTRESSED CONCRETE GIRDERS



TYPICAL SECTION AT INTERMEDIATE DIAPHRAGM



CONNECTION DETAIL NOT TO SCALE

4. ALL STEEL THREADED INSERTS, NUTS AND WASHERS SHALL BE HOT-DIP GALVANIZED IN CONFORMANCE WITH AASHTO M232 (ASTM A153).

5. FIELD DRILLED HOLES AND GALVANIZED SURFACES DAMAGED DURING CONSTRUCTION SHALL BE REPAIRED WITH FIELD APPLIED CORROSION RESISTANT COATING IN CONFORMANCE WITH THE REQUIREMENTS OF ASTM A780 PRIOR TO INSTALLING BOLTS. REAM FIELD DRILLED HOLES AS REQUIRED FOR BOLT CLEARANCE PRIOR TO FIELD APPLIED GALVANIZING REPAIR.

PROJECT NAME: WINDSOR	PLOT DATE: 7/30/2015
PROJECT NUMBER: IM 091-1(64)	DRAWN BY: N. GARCIA III
FILE NAME: s10s188GirdD16.dgn	CHECKED BY: G. WALKER
PROJECT LEADER: J. WILSON	SHEET 71 OF 156
DESIGNED BY: R. PEIN	
GIRDER DETAILS 6	