

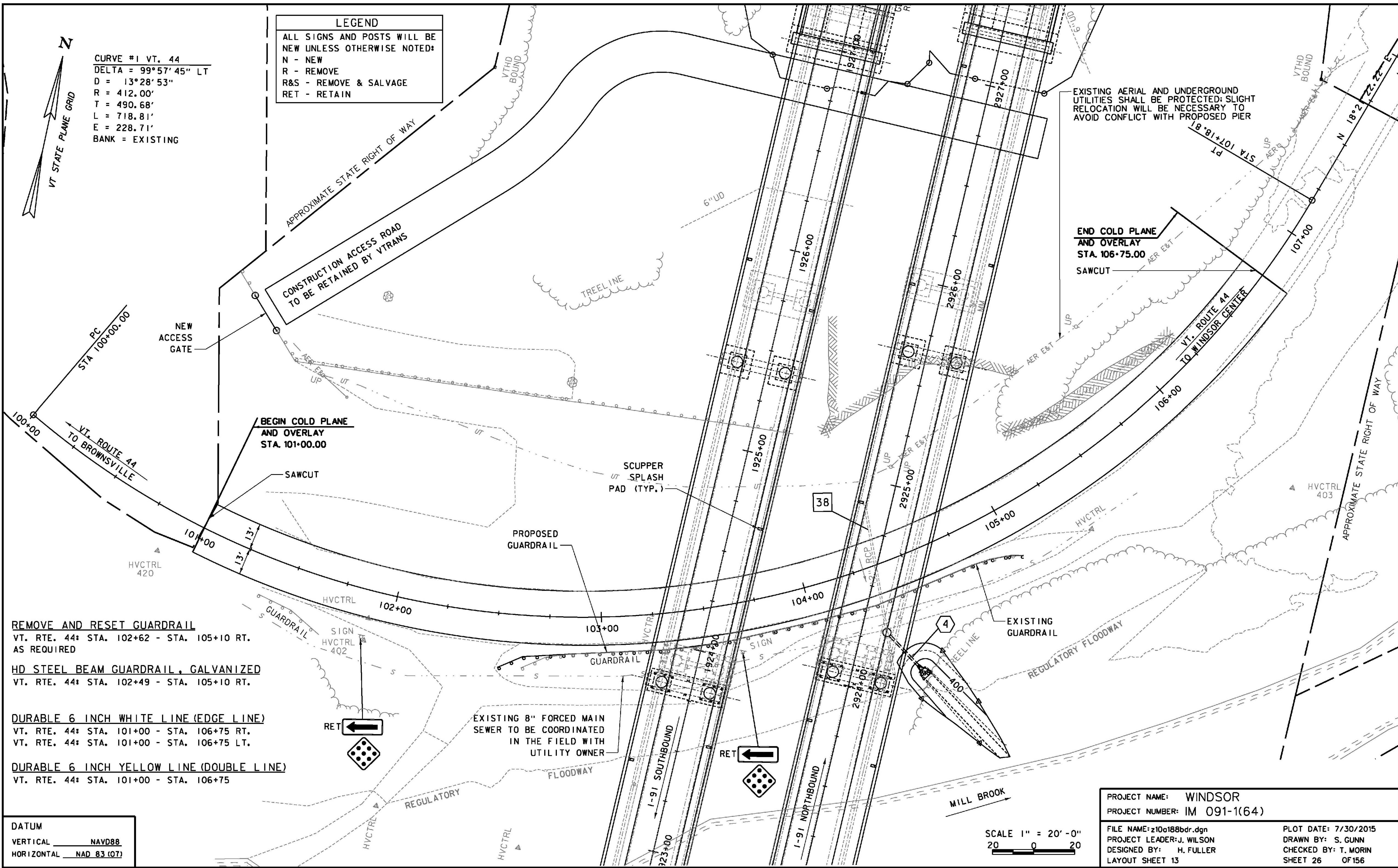


CURVE #1 VT. 44
 DELTA = 99°57'45" LT
 D = 13°28'53"
 R = 412.00'
 T = 490.68'
 L = 718.81'
 E = 228.71'
 BANK = EXISTING

LEGEND	
ALL SIGNS AND POSTS WILL BE NEW UNLESS OTHERWISE NOTED:	
N - NEW	
R - REMOVE	
R&S - REMOVE & SALVAGE	
RET - RETAIN	

EXISTING AERIAL AND UNDERGROUND UTILITIES SHALL BE PROTECTED; SLIGHT RELOCATION WILL BE NECESSARY TO AVOID CONFLICT WITH PROPOSED PIER

END COLD PLANE AND OVERLAY STA. 106+75.00
 SAWCUT



REMOVE AND RESET GUARDRAIL
 VT. RTE. 44: STA. 102+62 - STA. 105+10 RT.
 AS REQUIRED

HD STEEL BEAM GUARDRAIL, GALVANIZED
 VT. RTE. 44: STA. 102+49 - STA. 105+10 RT.

DURABLE 6 INCH WHITE LINE (EDGE LINE)
 VT. RTE. 44: STA. 101+00 - STA. 106+75 RT.
 VT. RTE. 44: STA. 101+00 - STA. 106+75 LT.

DURABLE 6 INCH YELLOW LINE (DOUBLE LINE)
 VT. RTE. 44: STA. 101+00 - STA. 106+75

DATUM
 VERTICAL NAVD88
 HORIZONTAL NAD 83 (07)

PROJECT NAME: WINDSOR
 PROJECT NUMBER: IM 091-1(64)

SCALE 1" = 20' - 0"
 20 0 20

FILE NAME: z10o188bdr.dgn
 PROJECT LEADER: J. WILSON
 DESIGNED BY: H. FULLER
 LAYOUT SHEET 13

PLOT DATE: 7/30/2015
 DRAWN BY: S. GUNN
 CHECKED BY: T. MORIN
 SHEET 26 OF 156