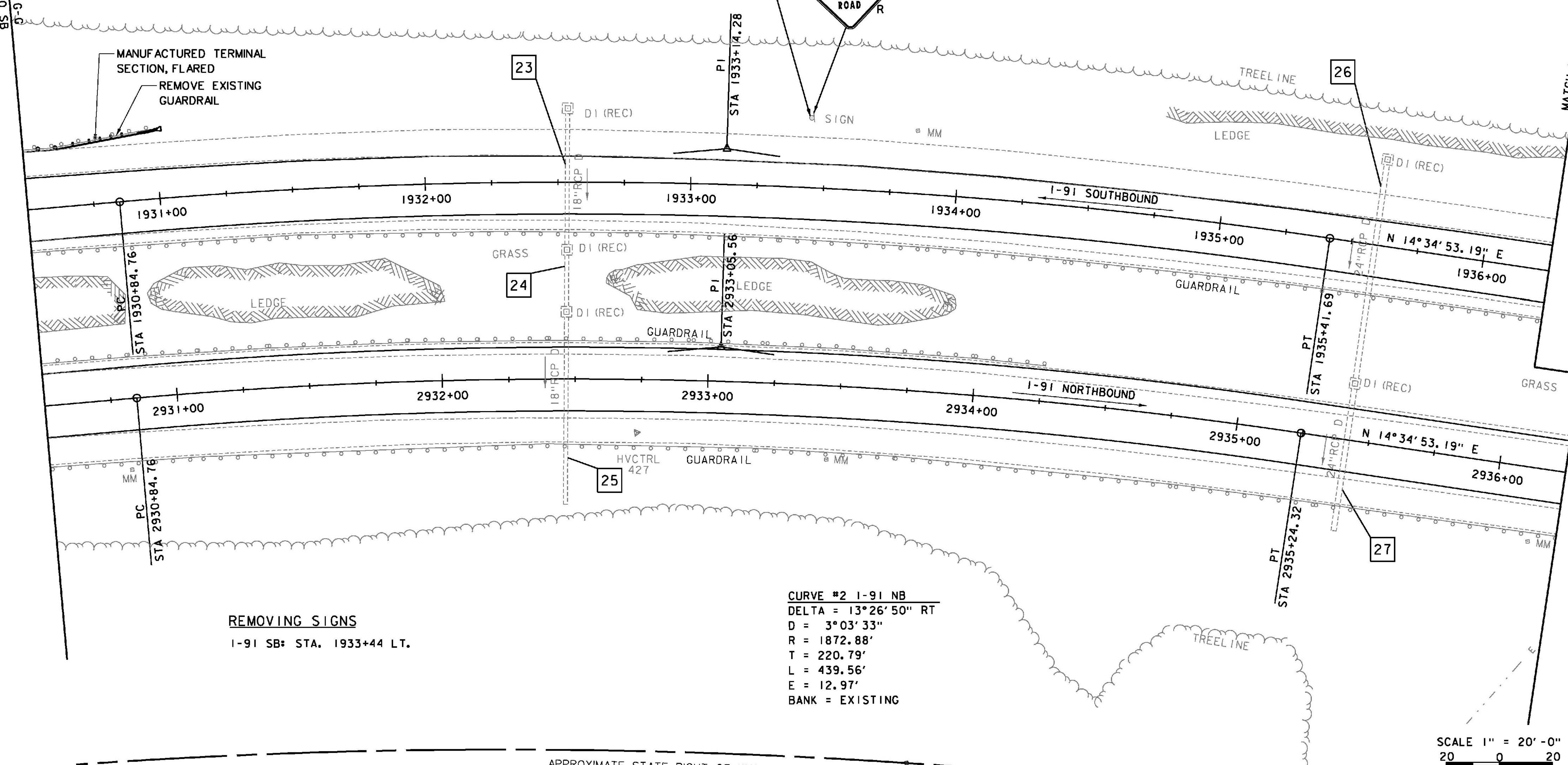


**CURVE #2 I-91 SB**  
 DELTA = 13°26'50" RT  
 D = 2°56'35"  
 R = 1946.88'  
 T = 229.52'  
 L = 456.93'  
 E = 13.48'  
 BANK = EXISTING

LEGEND	
ALL SIGNS AND POSTS WILL BE NEW UNLESS OTHERWISE NOTED:	
N	- NEW
R	- REMOVE
R&S	- REMOVE & SALVAGE
RET	- RETAIN

MATCH LINE G-G  
STA. 1930+50 SB

MATCH LINE H-H  
STA. 1936+25 SB



**REMOVING SIGNS**  
 I-91 SB: STA. 1933+44 LT.

**CURVE #2 I-91 NB**  
 DELTA = 13°26'50" RT  
 D = 3°03'33"  
 R = 1872.88'  
 T = 220.79'  
 L = 439.56'  
 E = 12.97'  
 BANK = EXISTING

SCALE 1" = 20'-0"  
 20 0 20

DATUM  
 VERTICAL NAVD88  
 HORIZONTAL NAD 83 (07)

PROJECT NAME: WINDSOR  
 PROJECT NUMBER: IM 091-1(64)  
 FILE NAME: z10o188bdr.dgn  
 PROJECT LEADER: J. WILSON  
 DESIGNED BY: H. FULLER  
 LAYOUT SHEET 8  
 PLOT DATE: 7/30/2015  
 DRAWN BY: S. GUNN  
 CHECKED BY: T. MORIN  
 SHEET 21 OF 156