

GPS CONTROL POINTS

HVCTRL #1  
 FARLEY  
 NORTH = 347975.525  
 EAST = 1663585.669  
 ELEV. = 501.306

GENERAL LOCATION, WINDSOR, VT. OWNERSHIP, JANET FARLEY, 120 DAIRY LANE, WINDSOR, VT.

TO REACH FROM THE INTERSECTION OF US ROUTE 5 AND VT ROUTE 44 IN THE VILLAGE OF WINDSOR, GO WEST ALONG VT ROUTE 44 FOR 0.5 MI (0.8 KM) TO A Y-INTERSECTION. TURN LEFT AND GO SOUTH ALONG VT ROUTE 44 FOR 2.0 MI (3.2 KM) TO THE CENTER OF THE I-91 BRIDGES OVERHEAD. CONTINUE WEST ALONG VT ROUTE 44 FOR 0.3 MI (0.5 KM) TO THE INTERSECTION OF DAIRY LANE LEFT. TURN LEFT AND GO SOUTH ALONG DAIRY LANE FOR 0.1 MI (0.2 KM) TO A ROTARY AT THE END OF THE ROAD AND THE SITE OF THE MARK IN THE CENTER OF THE GRASS AREA WITHIN THE ROTARY.

THE MARK IS SET 15 CM (6 INCHES) BELOW GROUND SURFACE IN THE TOP OF A FENO STYLE MONUMENT.

IT IS 13.5 M (44.3 FT) NORTH OF AND ABOUT LEVEL WITH THE CENTERLINE OF THE SOUTH END OF THE ROTARY, 32.9 M (107.9 FT) NORTH-NORTHEAST OF THE NORTHEAST CORNER OF HOUSE NO 96, 28.3 M (92.8 FT) WEST-SOUTHWEST OF THE SOUTHWEST CORNER OF HOUSE NO 120, 19.7 M (64.6 FT) NORTH-NORTHWEST OF A 30 CM (12 INCH) DIAMETER APPLE AT THE EAST END OF A SPLIT RAIL WOODEN FENCE AND 2.5 M (8.2 FT) EAST-NORTHEAST OF POLE NO 122-2A/71C AND A FIBERGLASS WITNESS POST.

HVCTRL #33  
 WINDSOR REC  
 NORTH = 353234.707  
 EAST = 1665788.243  
 ELEV. = 446.786

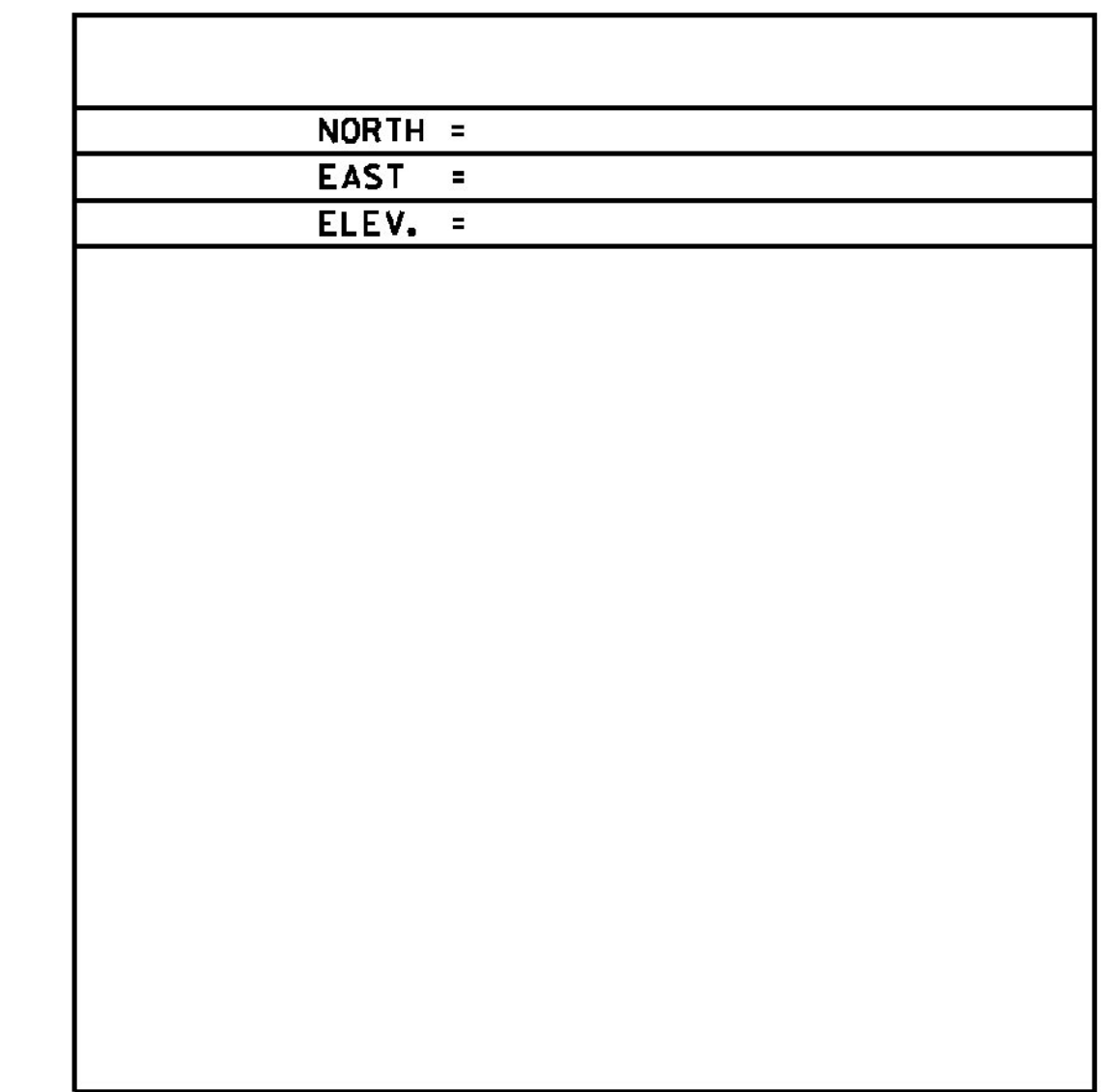
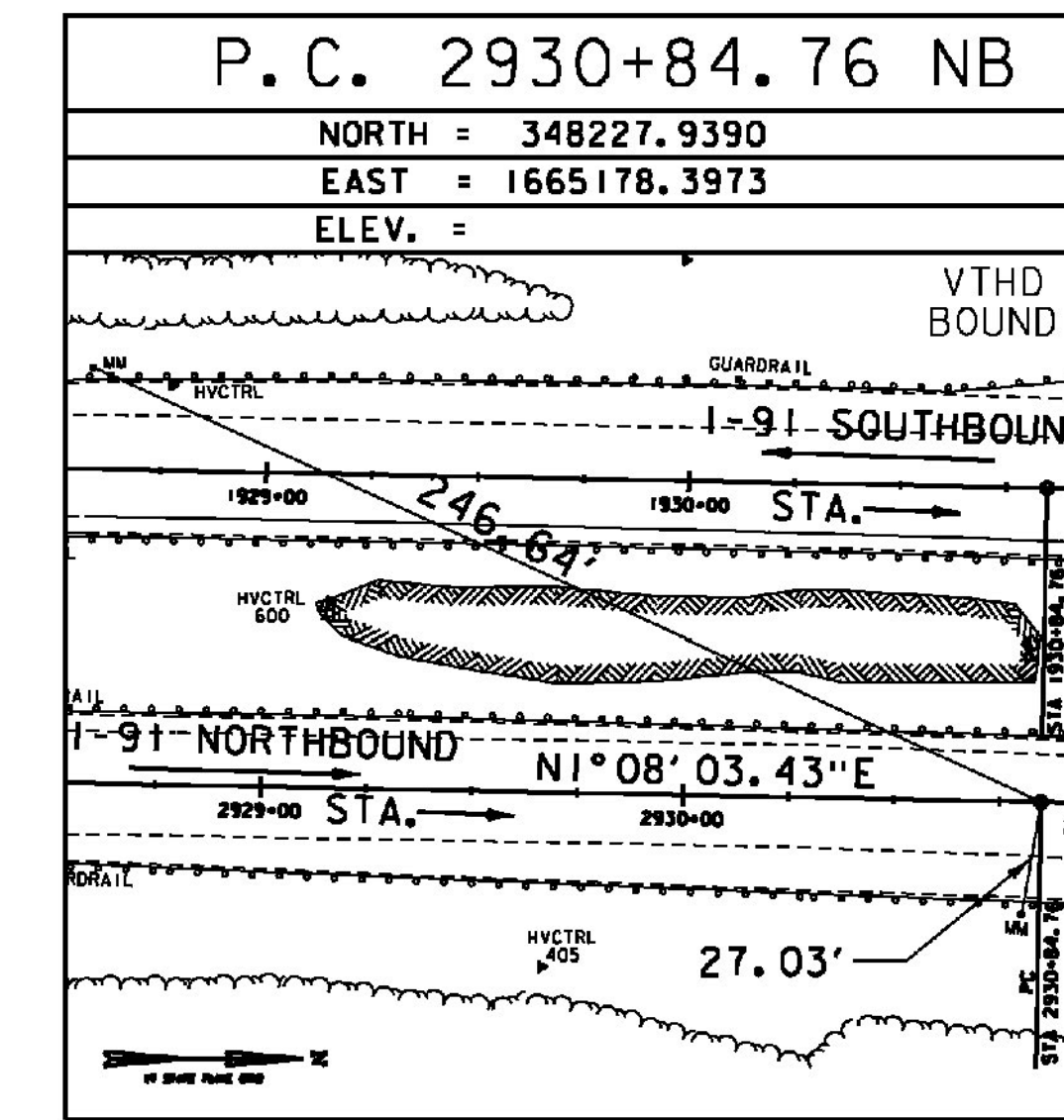
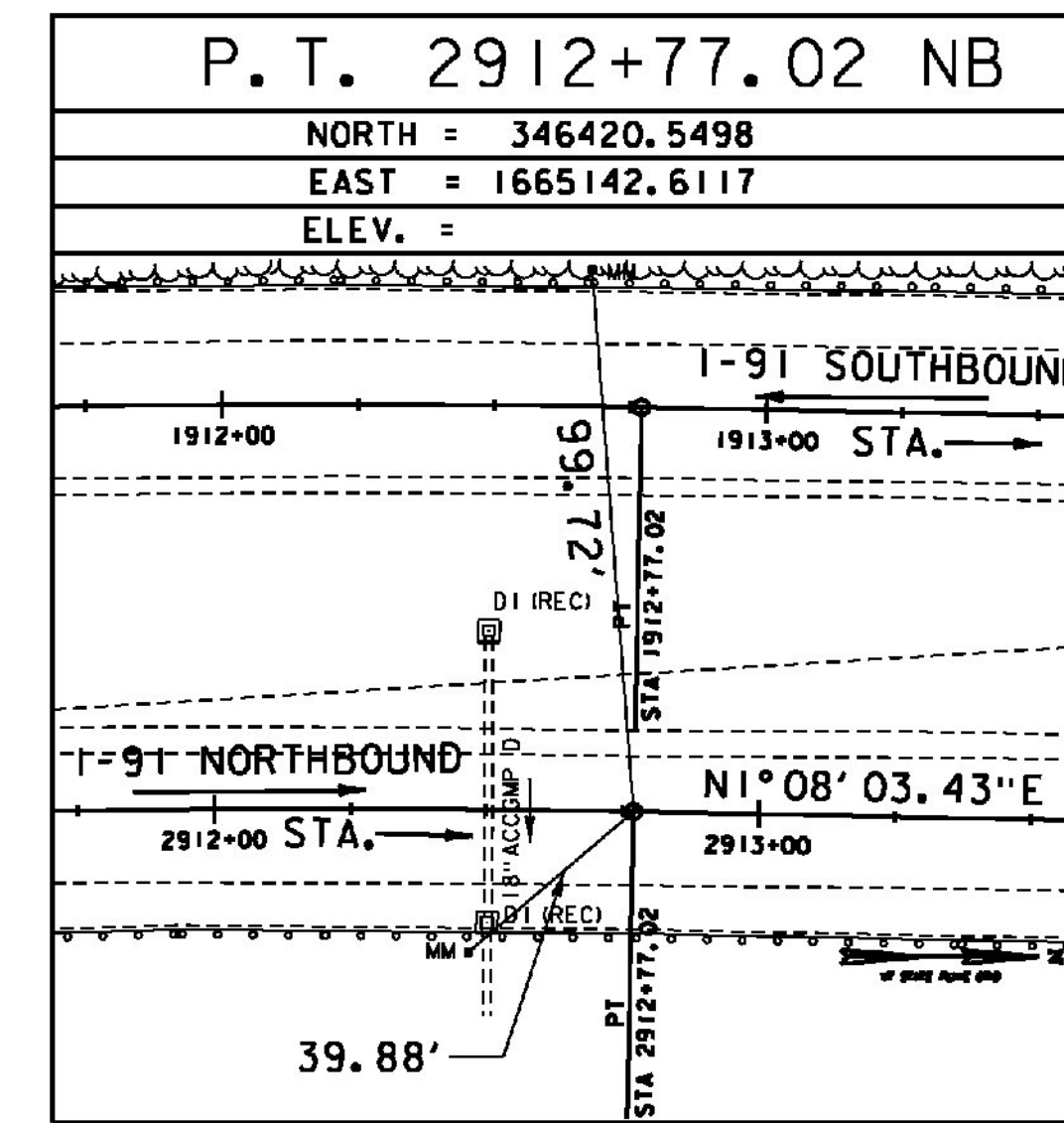
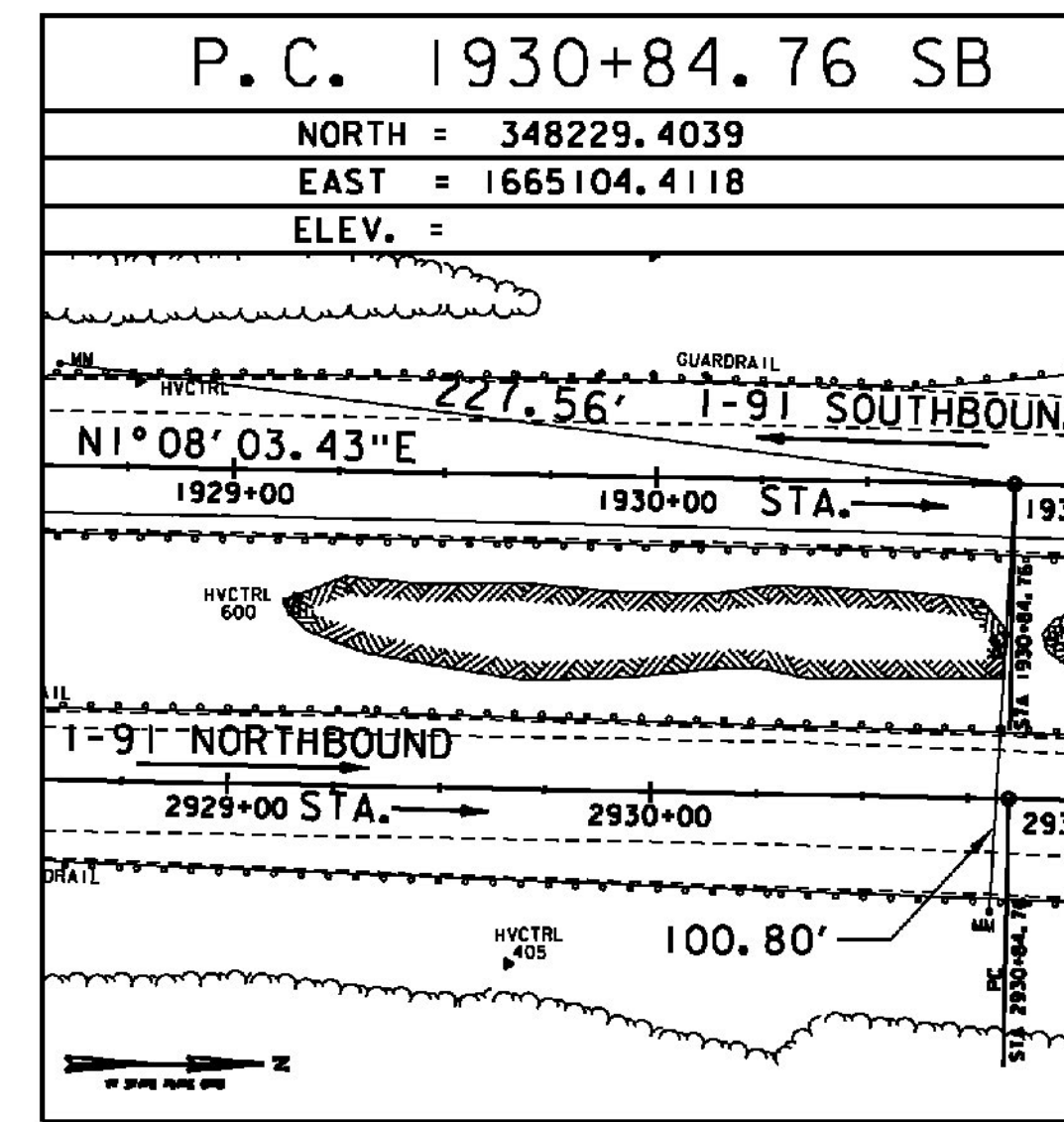
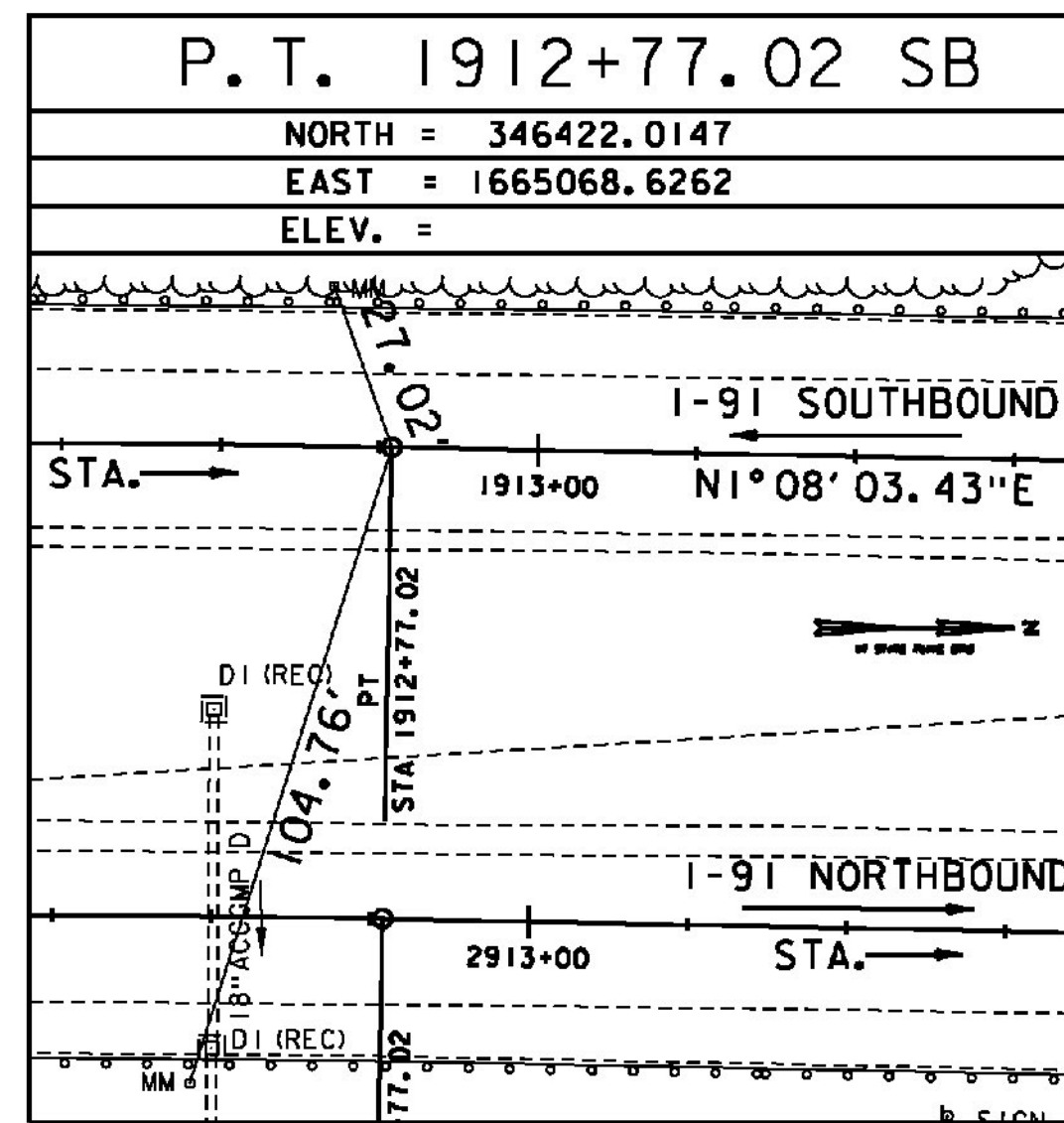
GENERAL LOCATION, WINDSOR, VT. OWNERSHIP, WINDSOR TOWN OFFICE, POINT OF CONTACT, HARRY LADUE.

TO REACH FROM THE INTERSECTION OF US ROUTE 5 AND VT ROUTE 44 IN THE VILLAGE OF WINDSOR, GO WEST ALONG VT ROUTE 44 FOR 0.5 MI (0.8 KM) TO A Y-INTERSECTION. TURN LEFT AND GO SOUTH ALONG VT ROUTE 44 FOR 0.8 MI (1.3 KM) TO THE SOUTHWEST END OF A RECREATION FIELD AND THE SITE OF THE MARK ON THE LEFT IN THE GRASS AREA BETWEEN THE PARKING AREA AND A BALL FIELD. IT IS ABOUT 60 M (196.9 FT) NORTHEAST OF THE VERMONT NATIONAL GUARD ARMORY BUILDING.

THE MARK IS SET 10 CM (4 INCHES) BELOW GROUND SURFACE IN THE TOP OF A FENO STYLE MONUMENT.

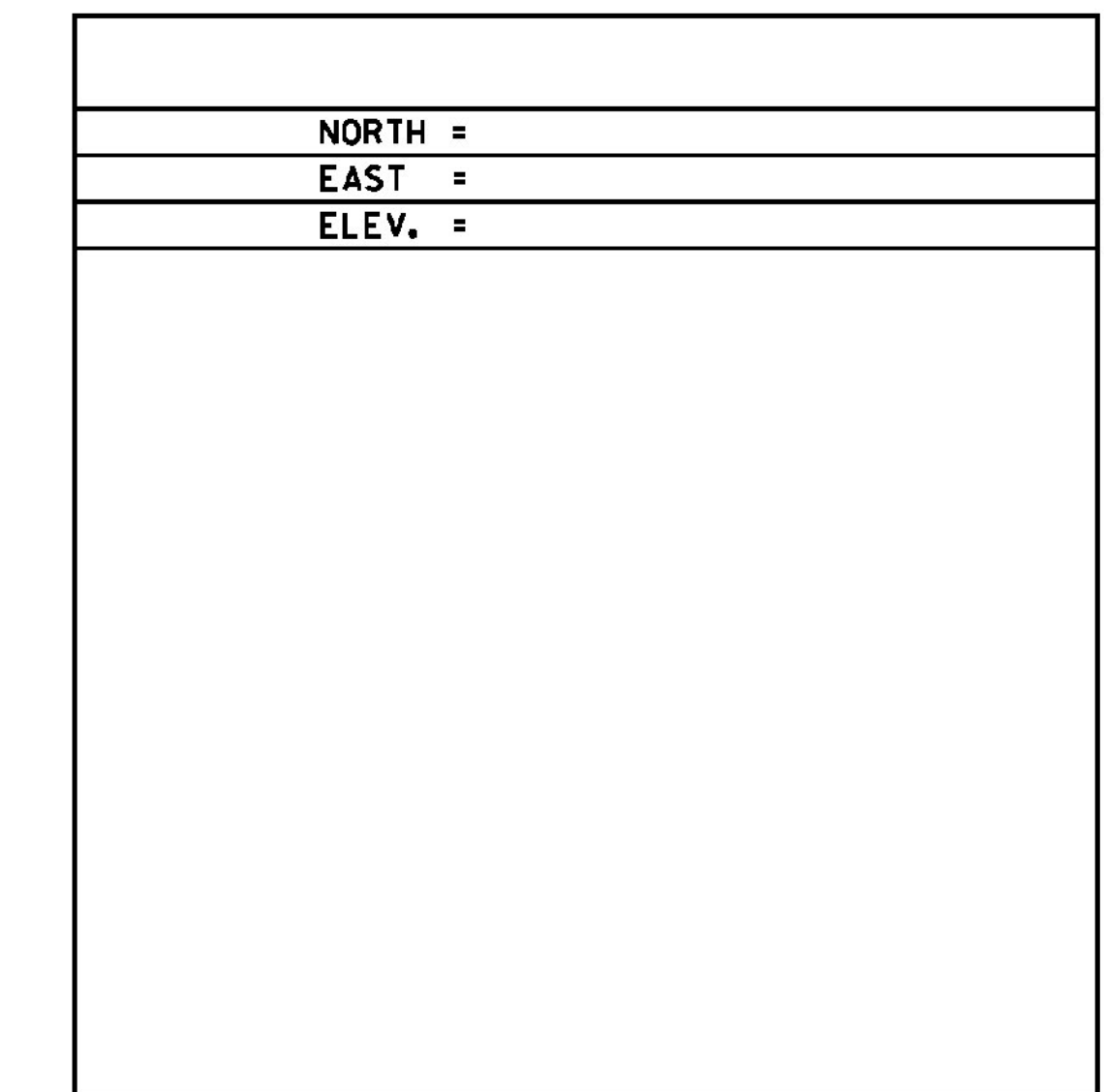
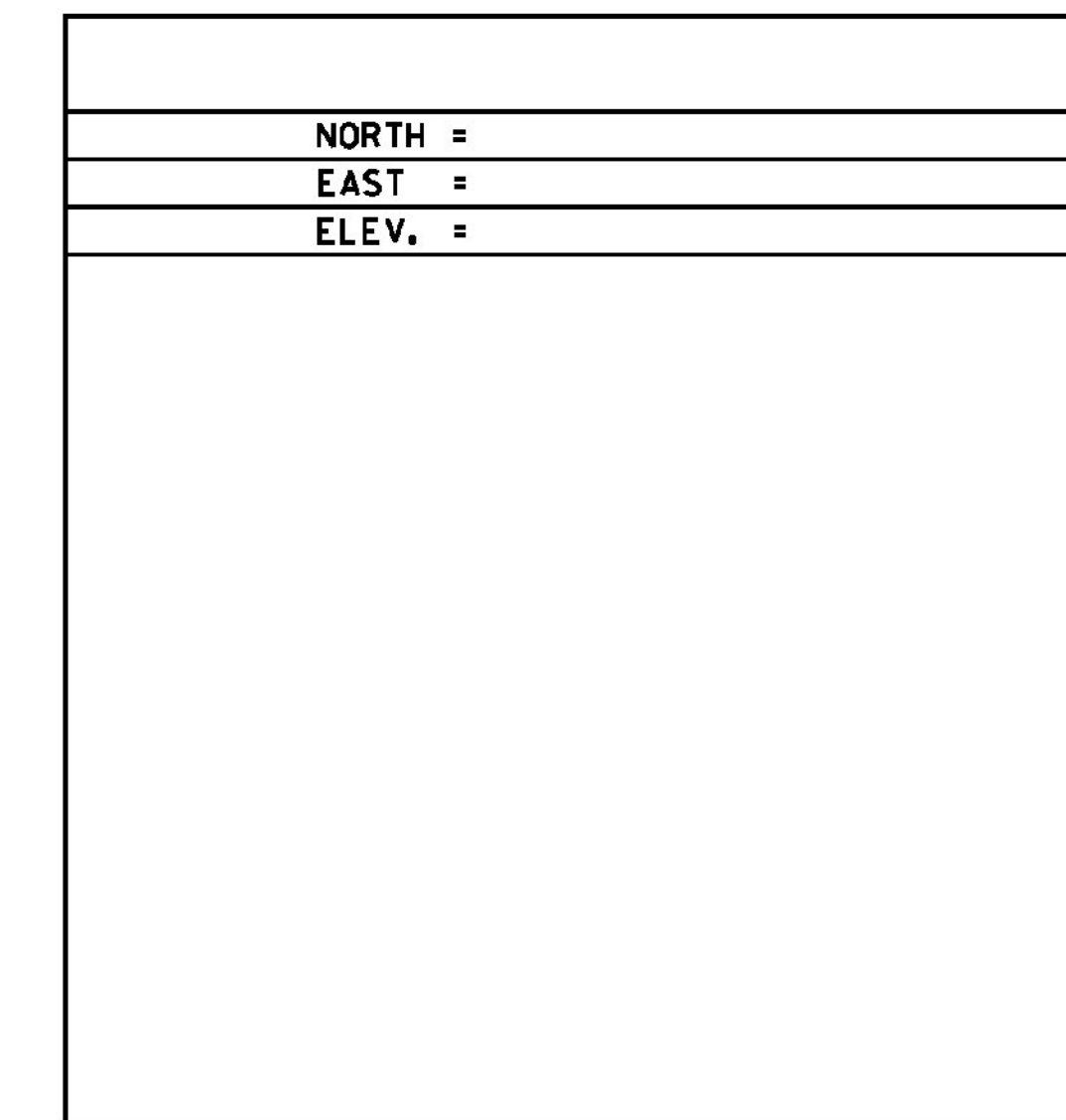
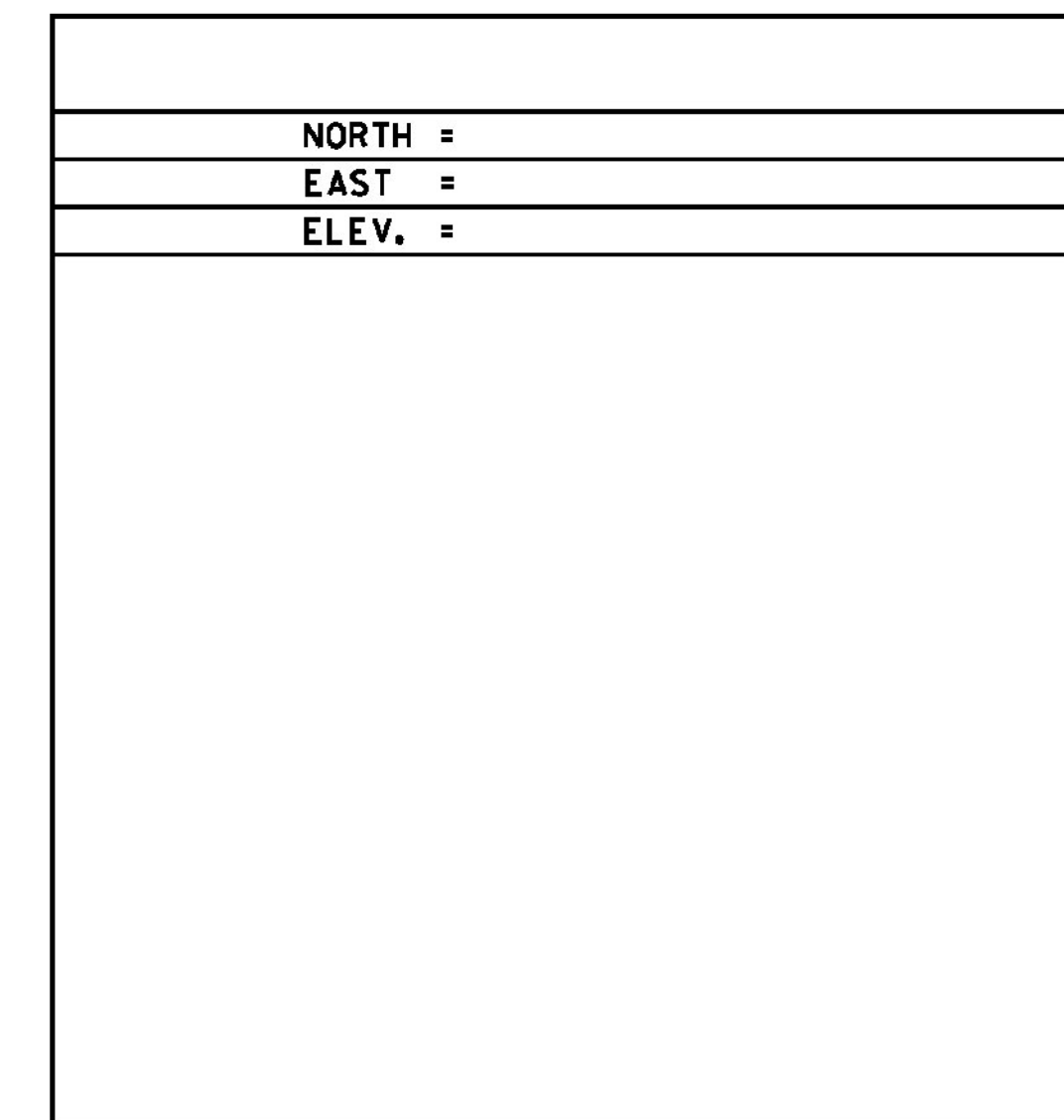
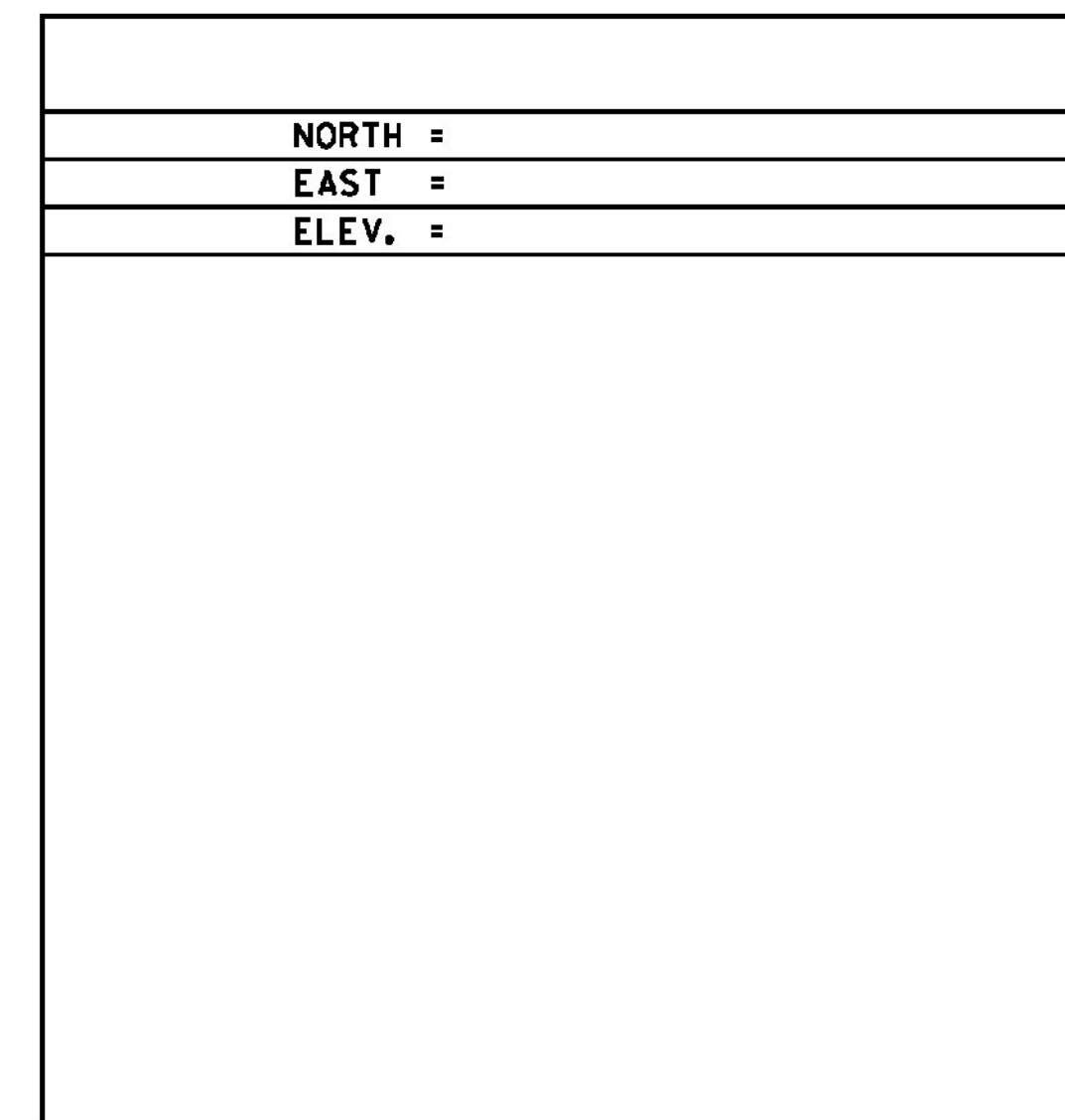
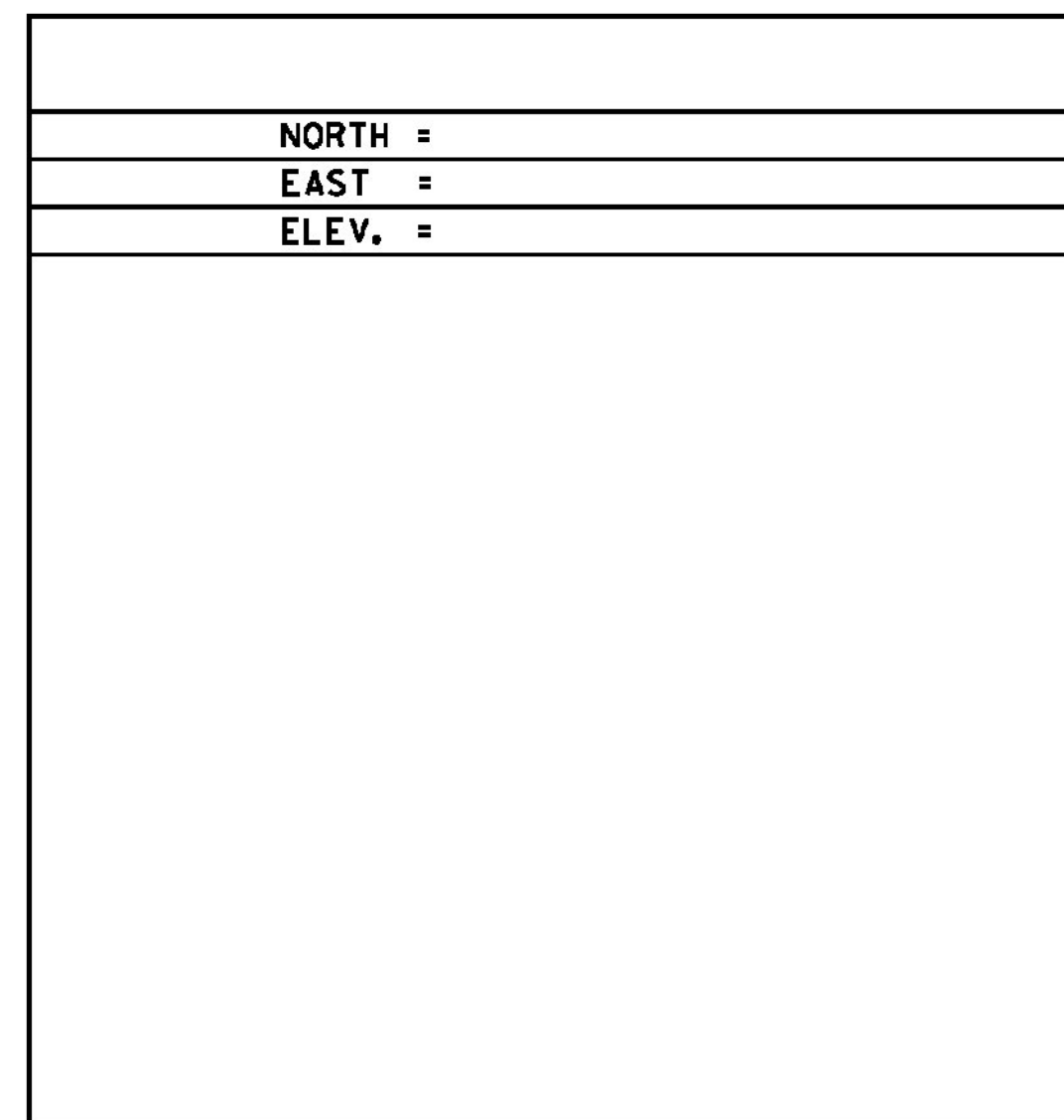
IT IS 40.2 M (131.9 FT) SOUTHWEST OF AND ABOUT LEVEL WITH THE CENTERLINE OF VT ROUTE 44, 34.1 M (111.9 FT) NORTHEAST OF THE NORTHWEST CORNER OF A CHAIN LINK FENCE FOR THE BALL FIELD, 28.5 M (93.5 FT) SOUTHWEST OF THE NORTHWEST CORNER OF A CONCRETE BLOCK STORAGE BUILDING, 5.5 M (18.0 FT) NORTHWEST OF THE FENCE, 5.1 M (16.7 FT) SOUTHWEST OF A ROW OF BOULDERS LINING THE EDGE OF THE PARKING AREA AND 40.7 M (133.5 FT) EAST OF POLE NO 47A AND A FIBERGLASS WITNESS POST.

ALIGNMENT TIES



NOTE: ALIGNMENT TIES NOT SHOWN IN AREAS OF MILL AND OVERLAY

ALIGNMENT TIES



DATUM	
VERTICAL	NAVD 88
HORIZONTAL	NAD 83 (07)
ADJUSTMENT	COMPASS

PROJECT NAME: WINDSOR  
 PROJECT NUMBER: IM 091-1(64)

FILE NAME: z10o188T1.dgn  
 PROJECT LEADER: J. WILSON  
 DESIGNED BY: H. FULLER  
 TIE SHEET 1

PLOT DATE: 7/30/2015  
 DRAWN BY: S. GUNN  
 CHECKED BY: T. MORIN  
 SHEET 11 OF 156

ALL TIES NOT SHOWN TO SCALE