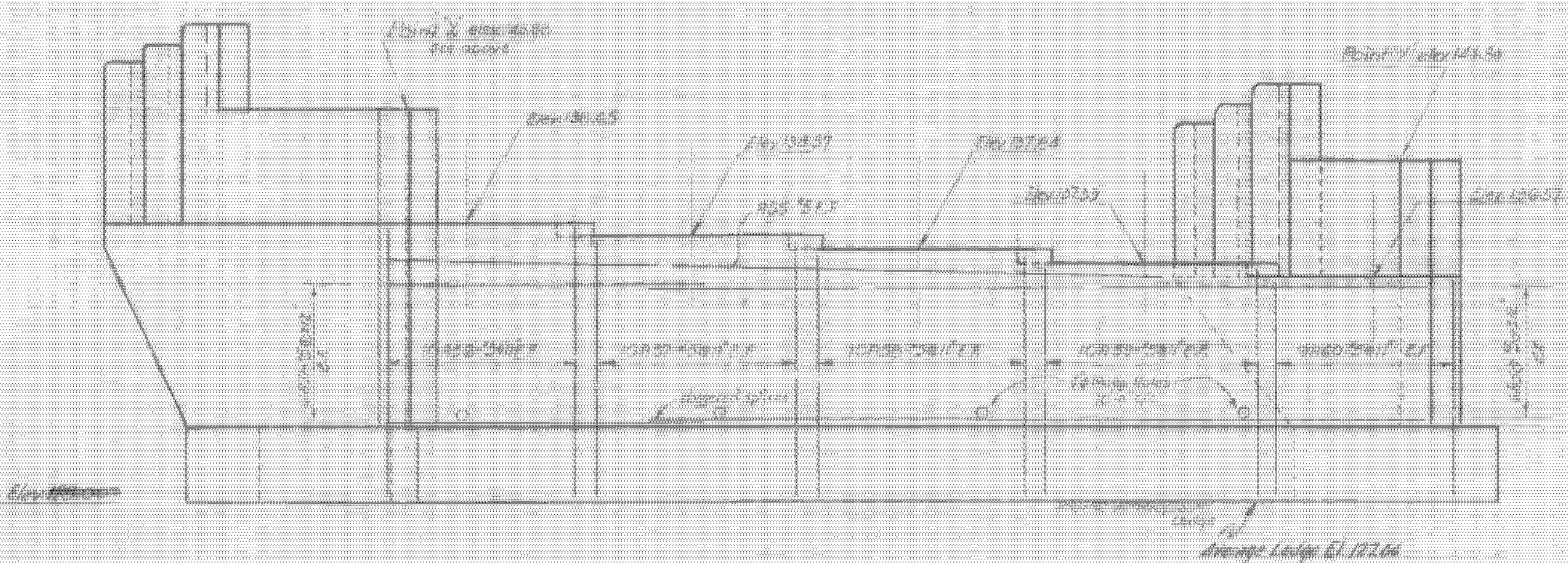


Bridge seat elevs are for 4' high
N.F. - Near Face
F.F. - Far Face
E.F. - Each Face
Reinf. clearance 3" except as noted
Reinf. spacing not indicated is 24"
Coat exposed bridge seats with
asphaltic asbestos coating (item 402)
2" thick after a concrete or pipe
close all exposed surfaces to drain
top of curb and post in follow grade
for railing details see drawing 88-56-60
for rock mass detail and
soil treatment (item 403) drawing 88-20-60
A beam B1 is 1/2" or 3/4" thick steel is
included in cover price



MILTON-HIGHGATE
IM MEMB(26)
SHEET 70 OF 70
BRIDGE 101
FOR REFERENCE ONLY

ITEM NO.	ITEM	UNIT	NET	OVERRRN	TOTAL	FINAL
106-A	CHAN. EXCAV. OF EARTH	C.Y.				
106-B	CHAN. EXCAV. OF ROCK	C.Y.				
106-C	UNCLASS. CHAN. EXCAV.	C.Y.				
107	STRUCT. EXCAV.	C.Y.				218
401-D	CONC. CLASS ② (MOD.)	C.Y.				82
402	REINF. STEEL	LBS.				see bar schedule
407	ASPHALTIC-ASB. COATING	S.Y.				
502-B	TREATED TIMBER PILING	L.F.				
503	SPLICES FOR STEEL PILING	EA				
504	STEEL PILING	L.F.				
502-A	UNTREATED TIMBER PILING	L.F.				
322	GRAVEL SPOOLS	C.Y.				

STATE OF VERMONT
DEPARTMENT OF HIGHWAYS
TOWN OF SWANTON-HIGHGATE
ROUTE No. 189 STA. 810+8.78
ABUTMENT "B" DETAILS
U.S. 7 OVER INTERSTATE
SCALE as noted
SURVEYED BY *Westerly*
DRAWN BY *R.N.L.* CHECKED BY *F.F.P.*
PROJECT No. 189-A0
SHEET 63 OF 113 Contract 3