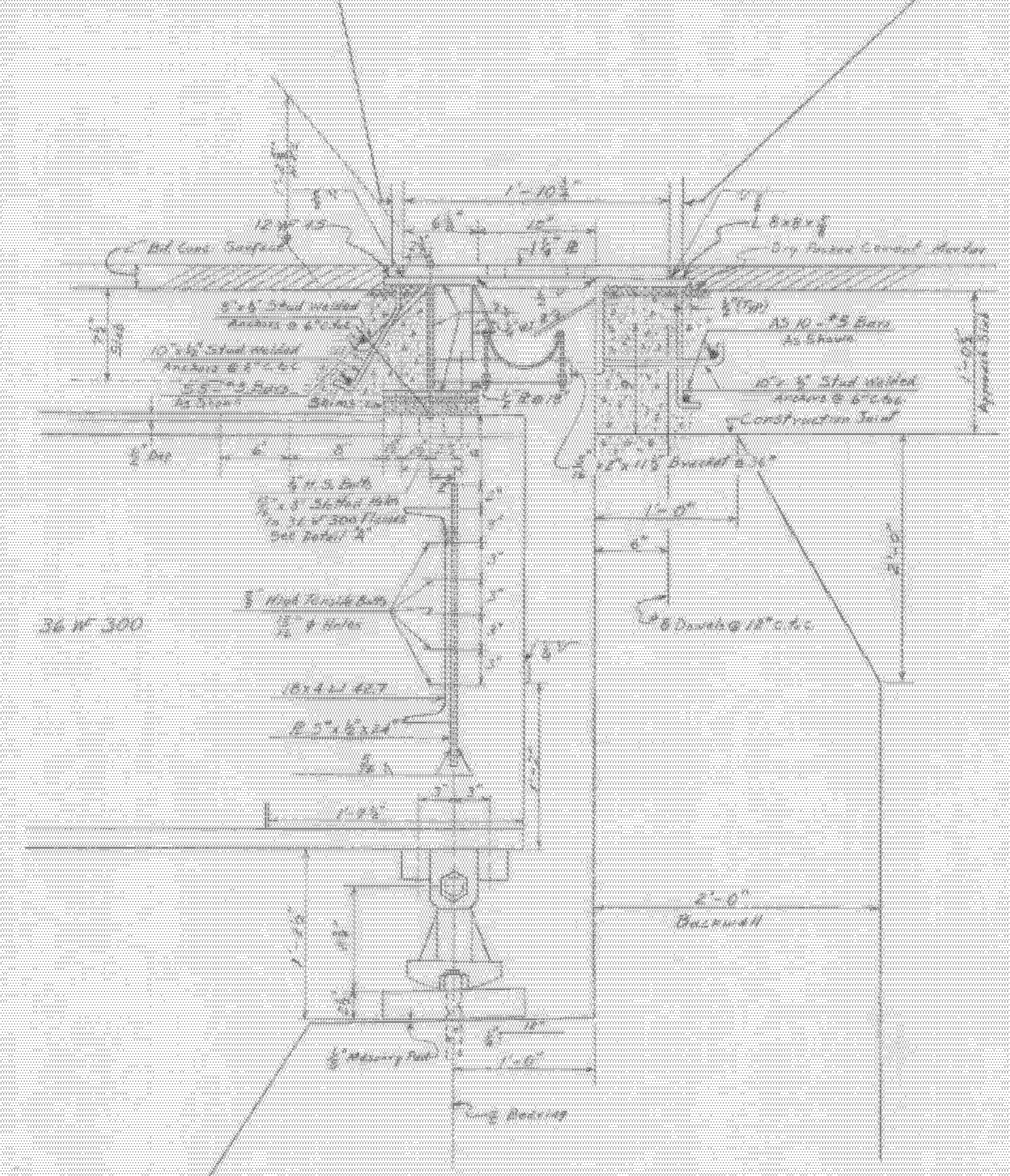
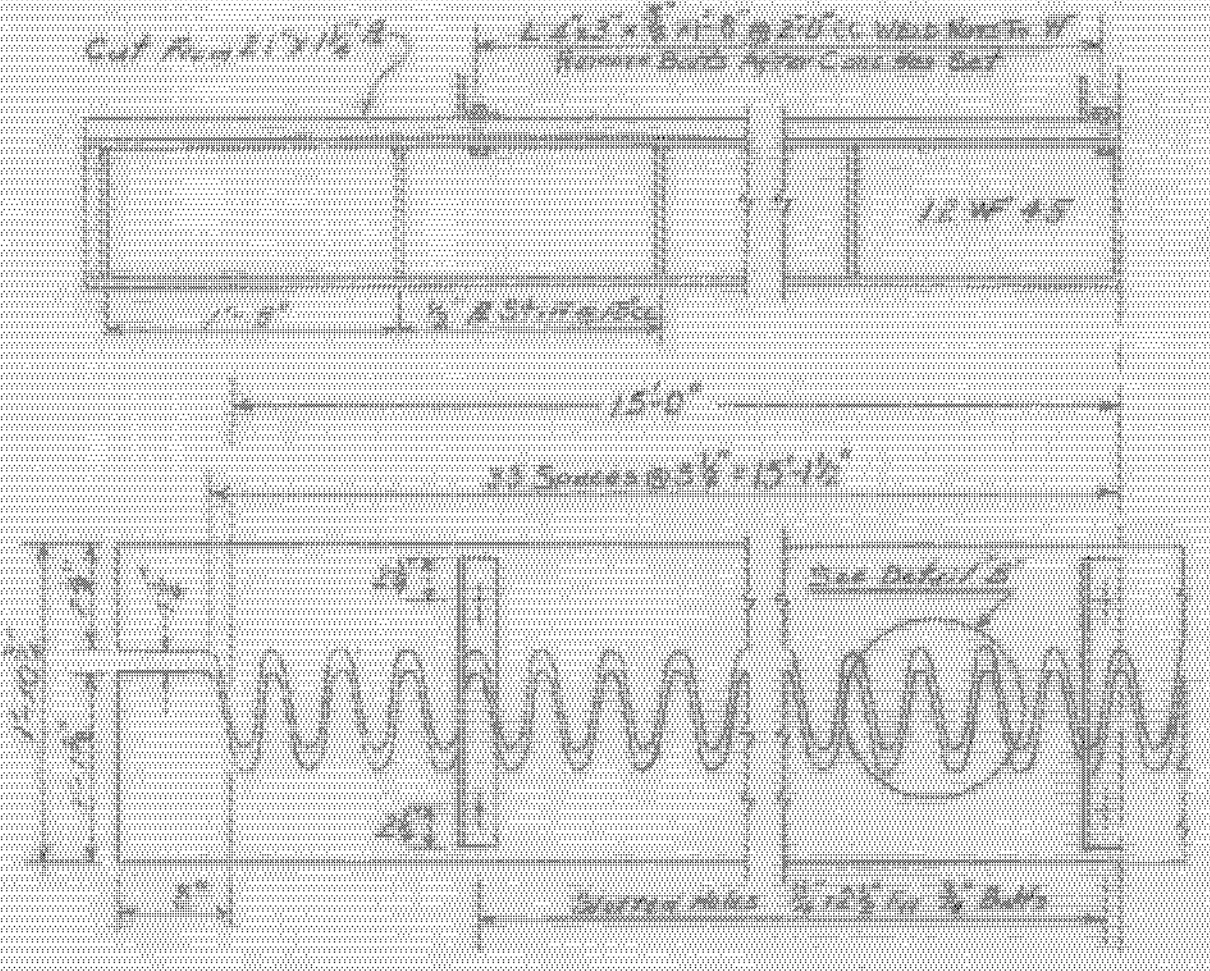


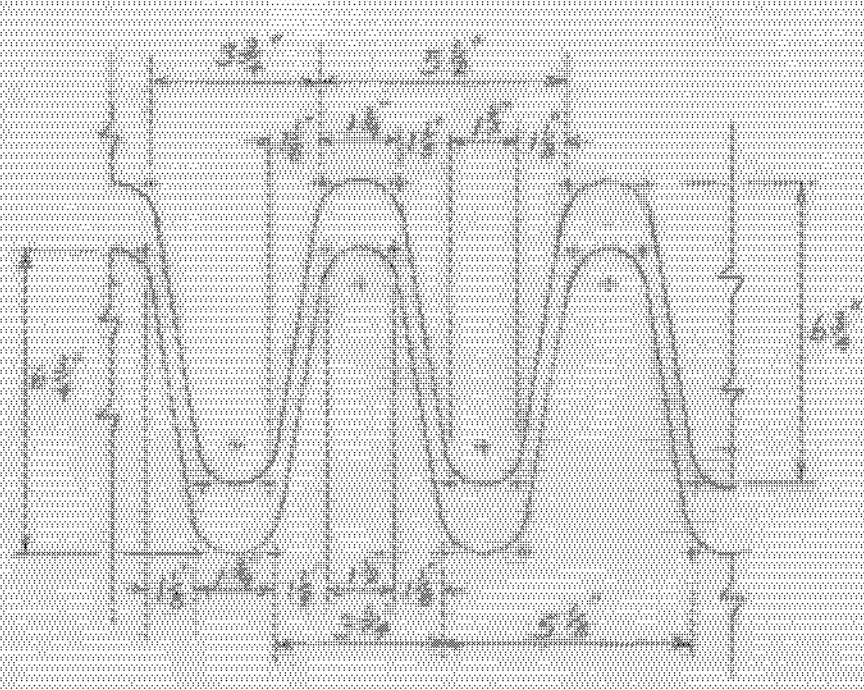
FORM JOINT REMOVE AFTER PLACING BITUMINOUS CONCRETE PAVEMENT AND FILL WITH ITEM 372A ①



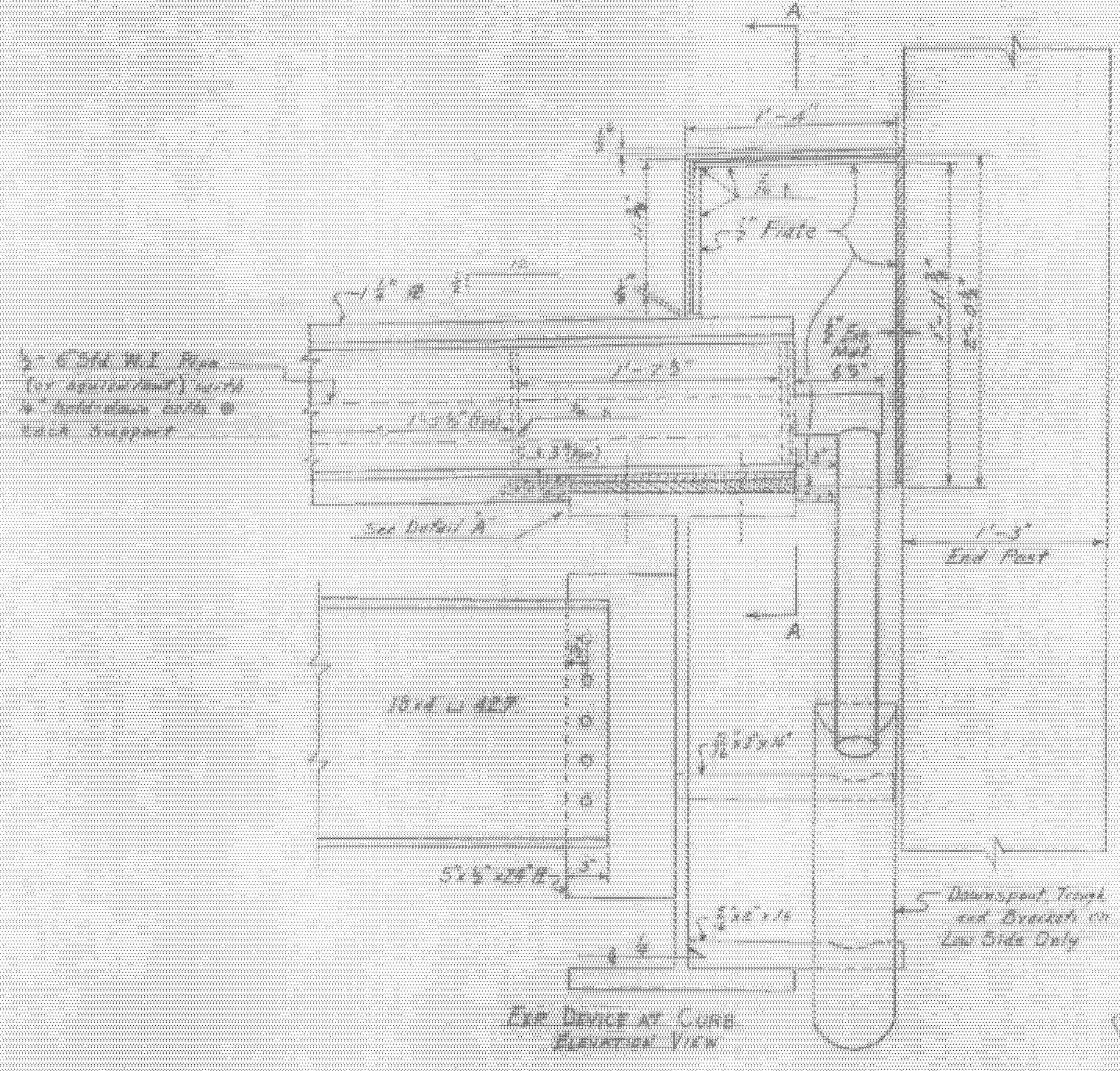
EXP. DAM
SCALE 1/2\"/>



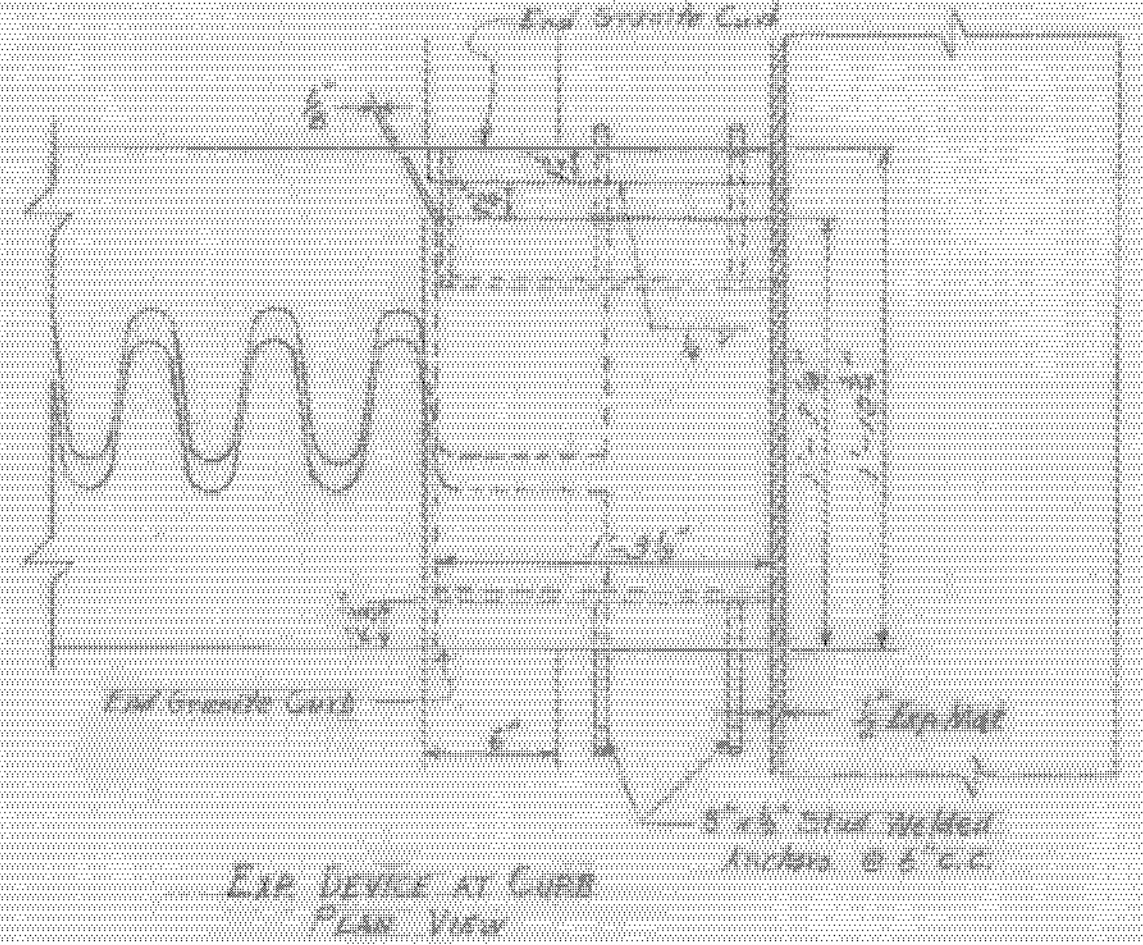
DETAIL A
SCALE 3/4\"/>



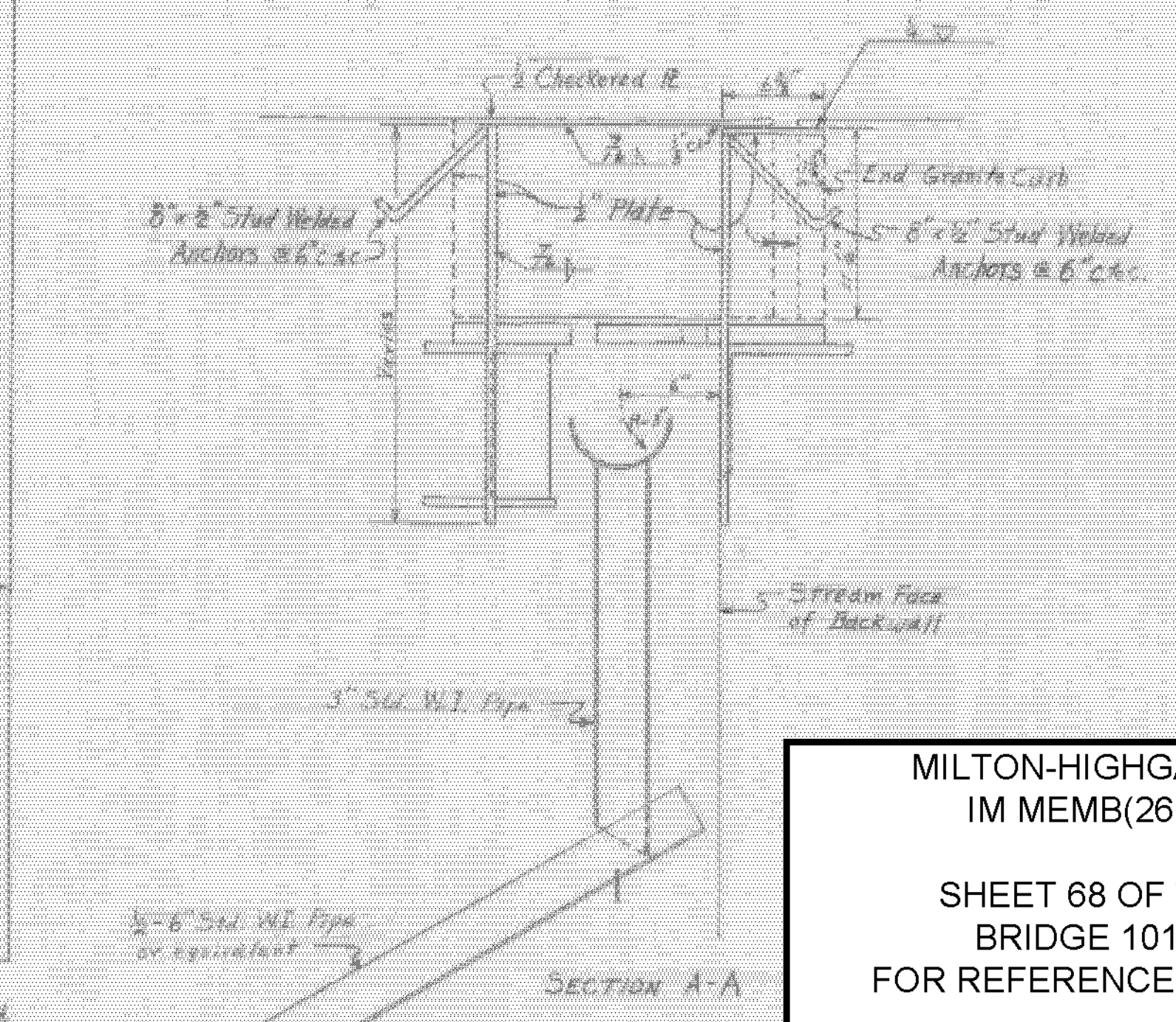
DETAIL B
SCALE 3/4\"/>



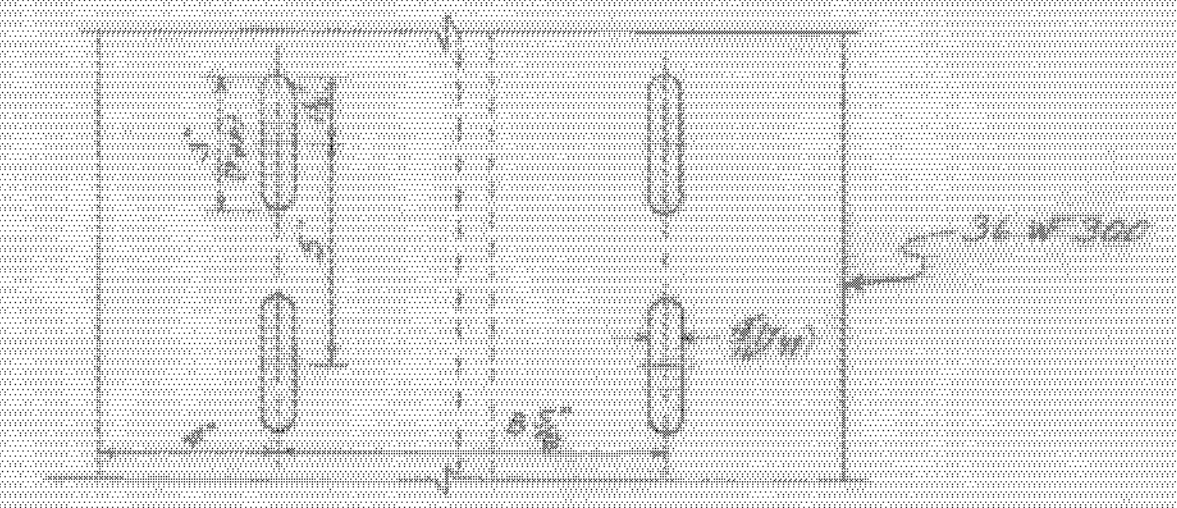
EXP. DAM
SCALE 1/2\"/>



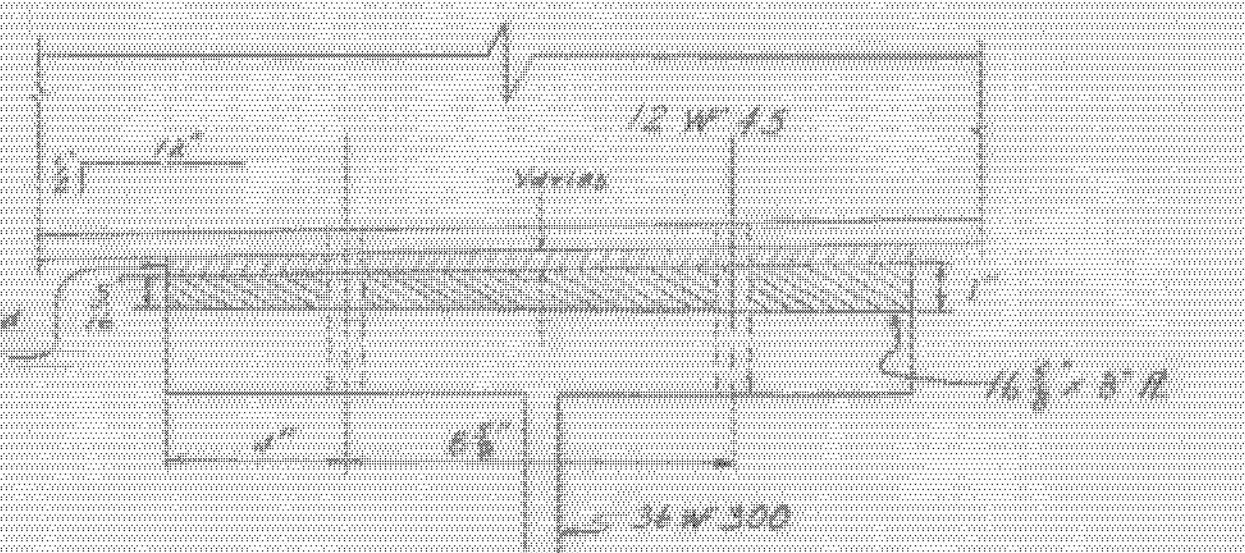
EXP. DAM
SCALE 1/2\"/>



SECTION A-A



DETAIL A
SCALE 3/4\"/>



DETAIL B
SCALE 3/4\"/>

- Notes:
- The finger plate assembly is to be completely fabricated upon delivery of job site. This assembly to include the 12 W 45 with all welded attachments including tough and apron, the finger plates with temporary lip, and the LB X B 2 1/2 with all welded attachments including apron. All weather surfaces are to receive three coats of shop paint (Section 404.03-B State of Vermont Dept of Highways Standard Specifications).
 - The initial 1/2" clearance of the finger plates is for a temperature of 68°F at the time of installation. Clearance shall be adjusted 1/8" for each 3% difference in temperature.

REVISIONS:
① CHANGED 372-C TO 372-A 5-27-65 RDB

ITEM NO.	ITEM	UNIT	NET	OVERRUN	TOTAL	FINAL
106-A	CHAN. EXCAV. OF EARTH	C. Y.				
106-B	CHAN. EXCAV. OF ROCK	C. Y.				
106-C	UNCLASS. CHAN. EXCAV.	C. Y.				
107	STRUCT. EXCAV.	C. Y.				
401-B	CONC. CLASS B (MOD.)	C. Y.				
402	REINF. STEEL	LBS.				
407	ASPHALTIC-ASB. COATING	S. Y.				
502-B	TREATED TIMBER PILING	L. F.				
503	SPLICES FOR STEEL PILING	EA.				
504	STEEL PILING	L. F.				
502-A	UNTREATED TIMBER PILING	L. F.				

MILTON-HIGHGATE
IM MEMB(26)

SHEET 68 OF 70
BRIDGE 101
FOR REFERENCE ONLY

STATE OF VERMONT
DEPARTMENT OF HIGHWAYS

TOWN OF SWANTON-HIGHGATE
ROUTE NO. 189
SOUTHBOUND LANE
EXPANSION END DETAILS
ROCK RIVER
SCALE 1/2" = 1'-0"
SURVEYED BY
DRAWN BY RIM CHECKED BY ELP
PROJECT NO. 189-3(2) CONTINUED
SHEET 70 OF 143