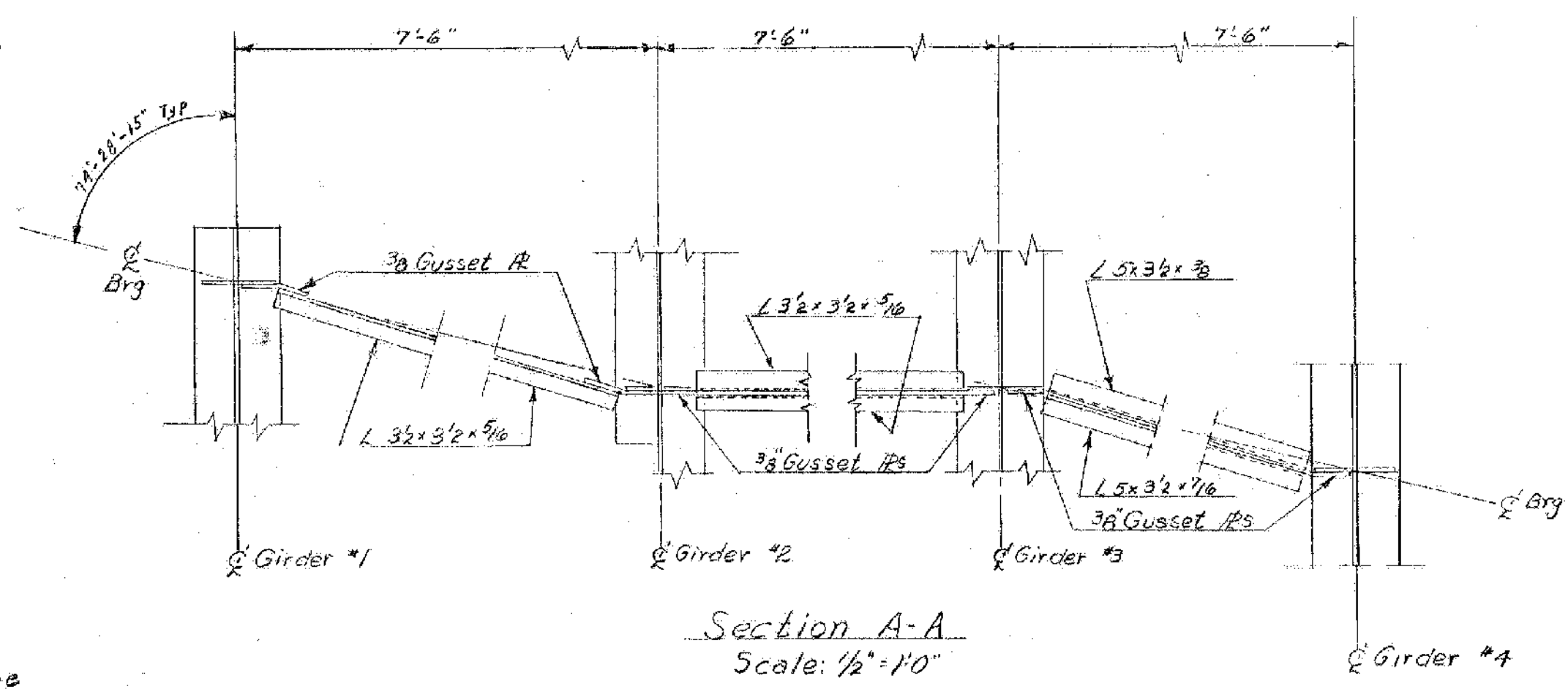
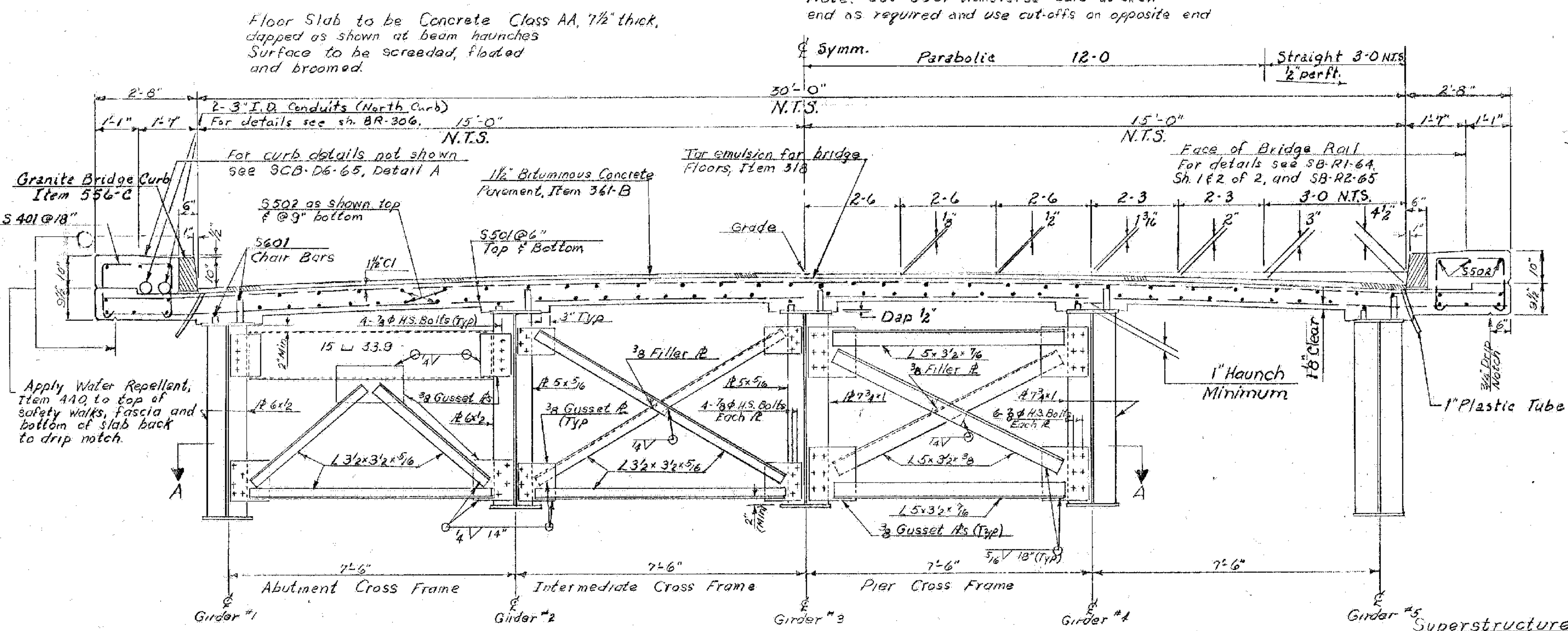
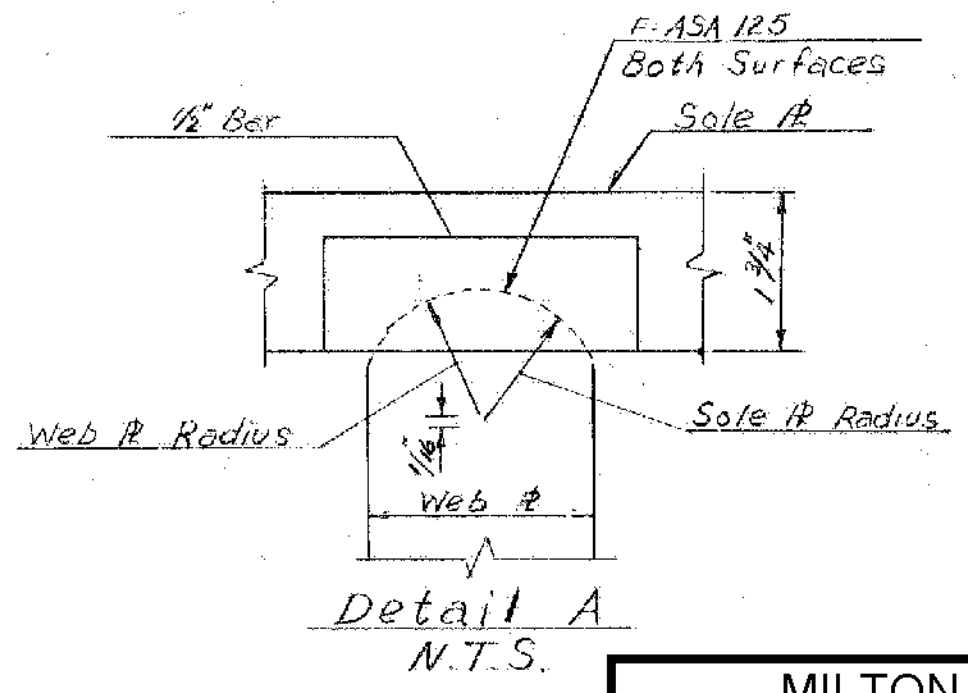
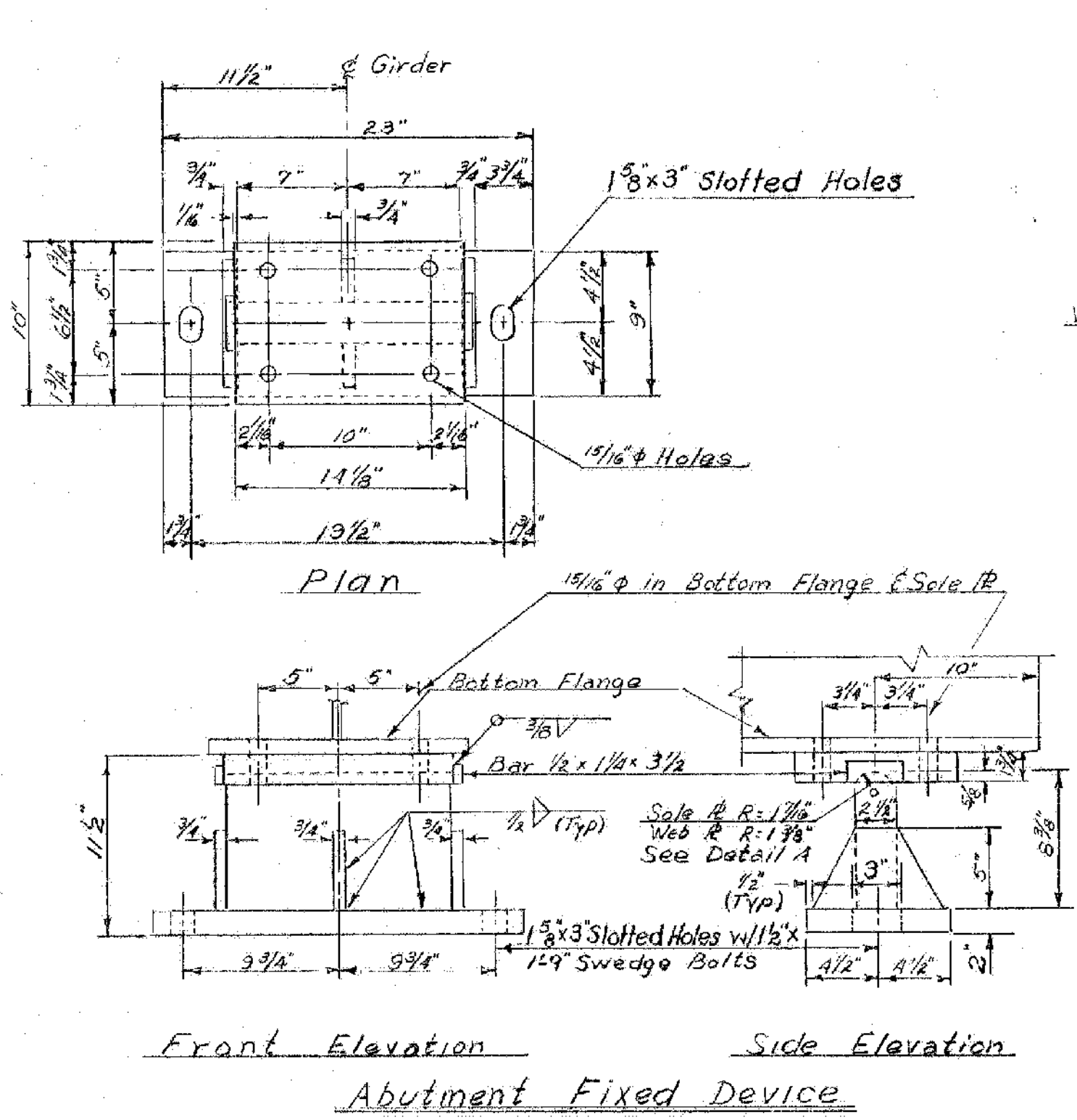
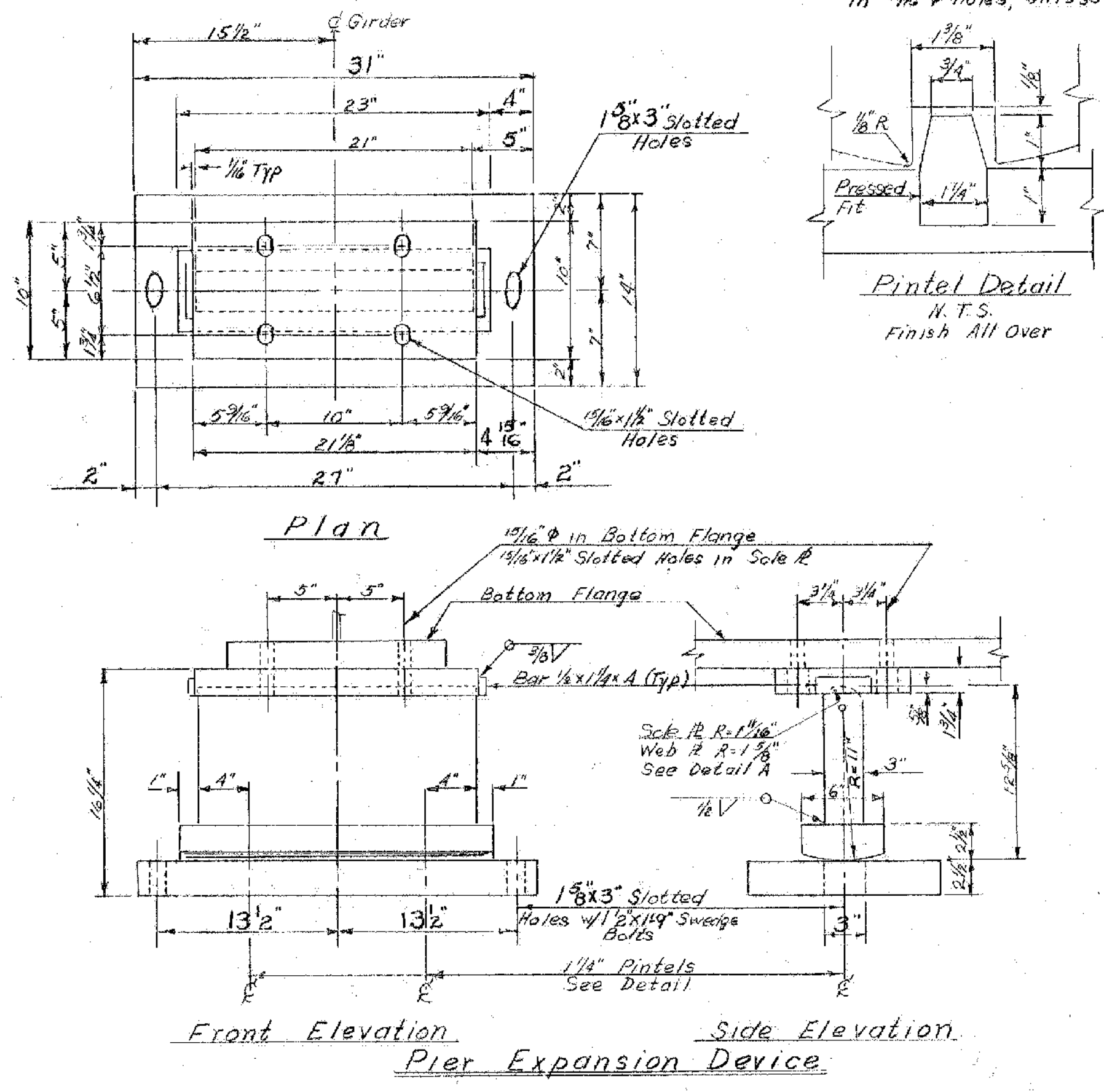
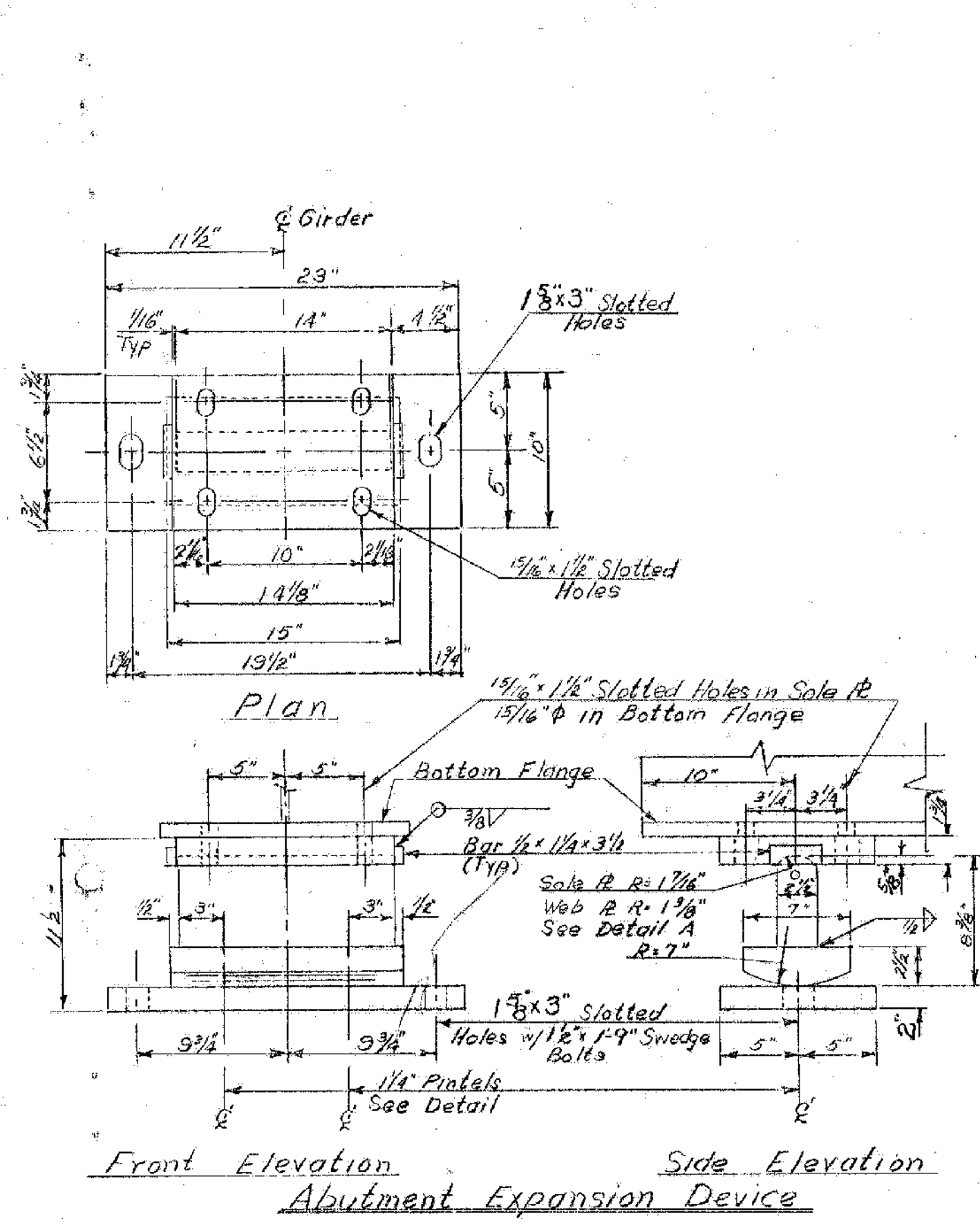


Note: Cut 5501 transverse bars at skew end as required and use cut-offs on opposite end



- Superstructure Notes**
1. For General Notes see Std. Sh. SCB-D1-65 and Br. Sh. 300
 2. All structural steel shall be ASTM A36-62T unless otherwise noted on the plans
 3. All field connections shall be made with 1/2" High Strength bolts in 1/4" holes, unless otherwise noted on the plans.

- Bearing Device Notes**
1. Red Lead and Canvas or Preformed Fabric Pads 8" thick, equal in size to the bearing plates shall be used under each bearing conforming to Specification 404.02 (23).
 2. Align devices so that all rocker arm shafts will be vertical at 45° F.
 3. Contact surfaces of rockers to be given shop coat of white lead and tallow. Pintal holes are to be filled with graphite at time of placement. Remainder of bearing to be given 3 coats of paint in accordance with Vt. Spec. 404.03



Bearing Devices
Scale: 1/2" = 1'-0"

MILTON-HIGHGATE
IM MEMB(26)
SHEET 57 OF 70
BRIDGE 91
FOR REFERENCE ONLY

STATE OF
DEPARTMENT OF HIGHWAYS
PROJECT NAME St. Albans - Swanton
TOWN OF St. Albans
ROUTE NO. 189
Vt. 105 over I 89 @ Sta. 3546 + 92.66
Typical Section and Bearing Devices
SCALE As noted
SURVEYED BY _____
DRAWN BY V.E. CHECKED BY A.J.C.
PROJECT No. 189-3(36) Cont. #1
SHEET 93 of 298