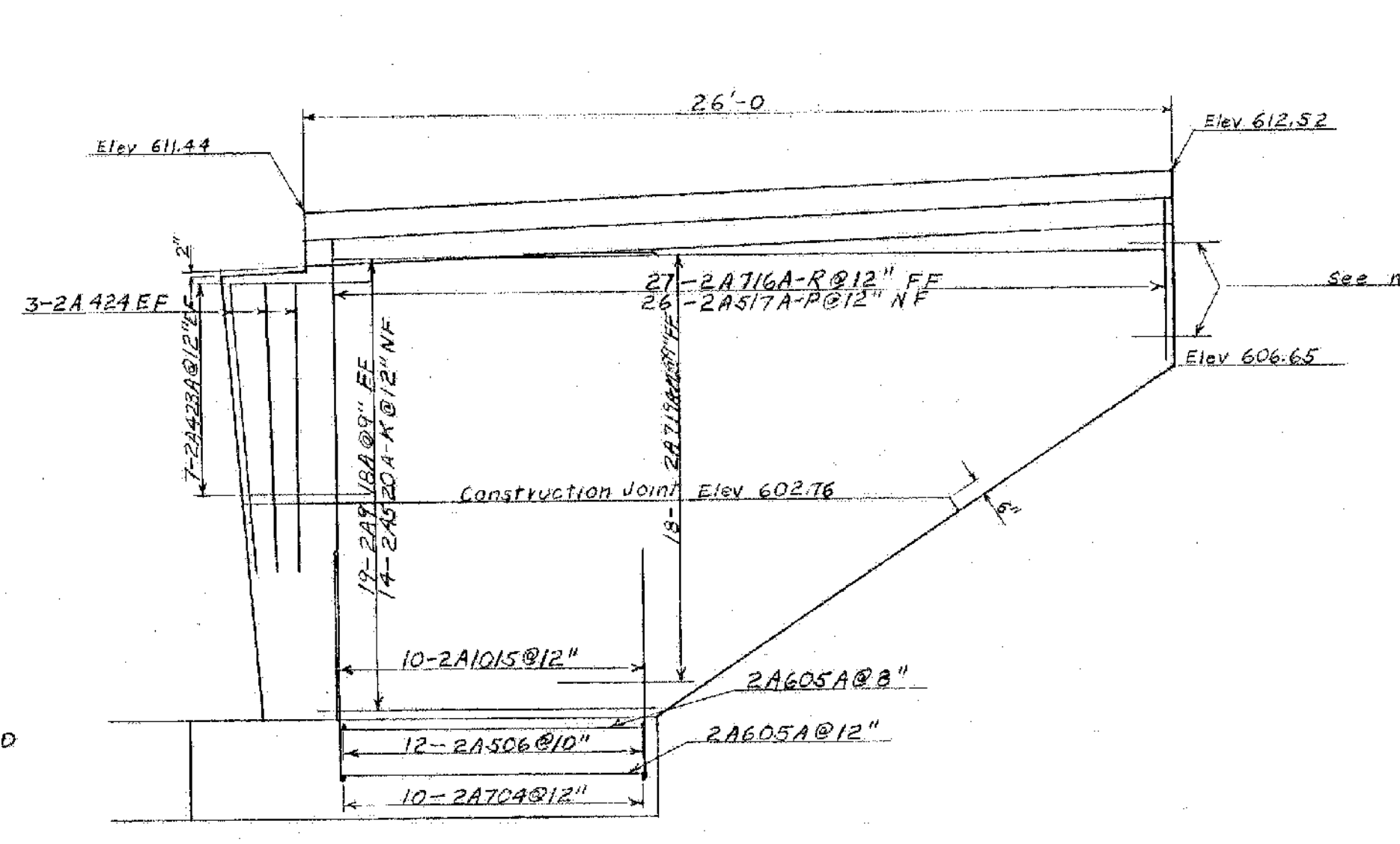
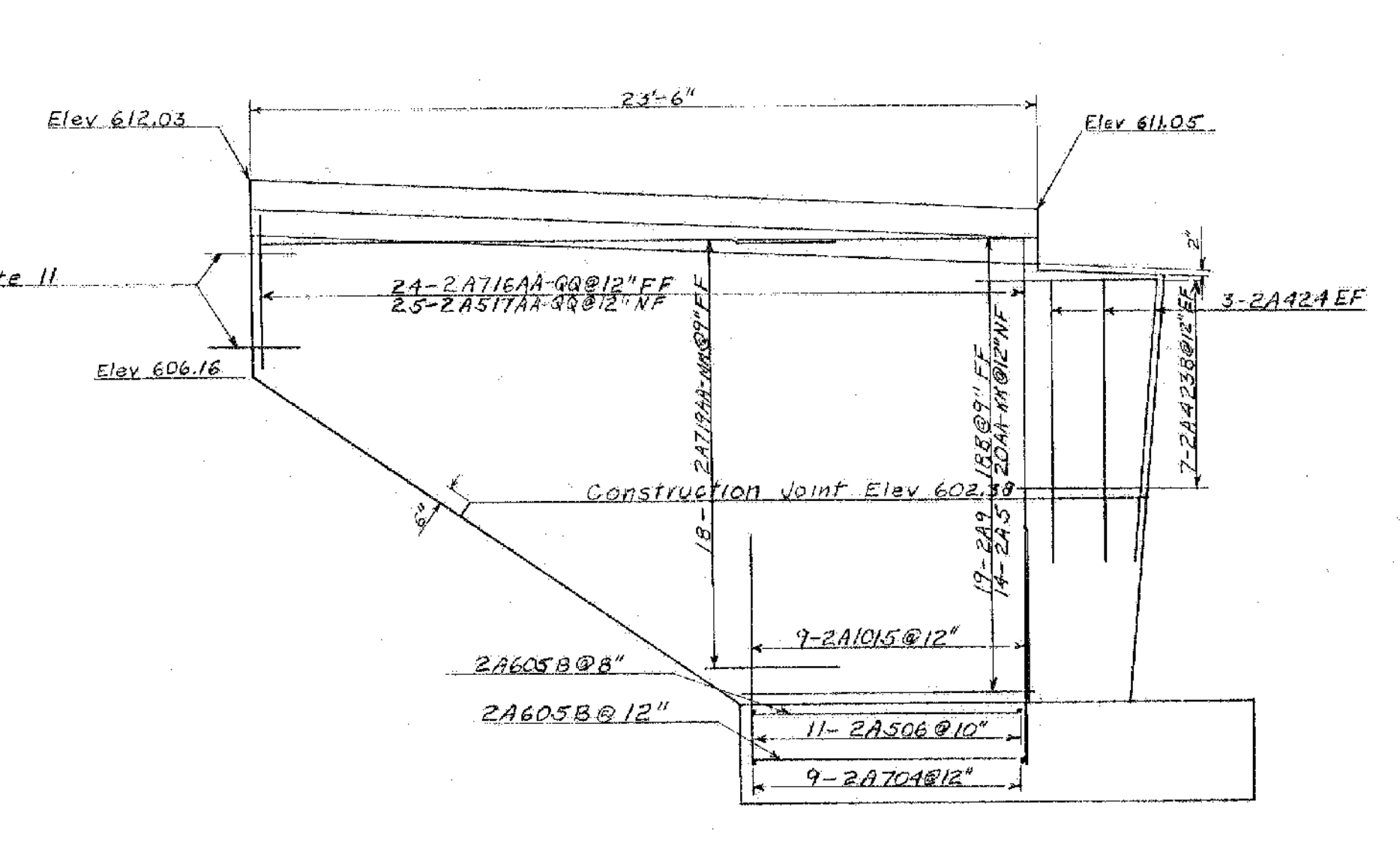


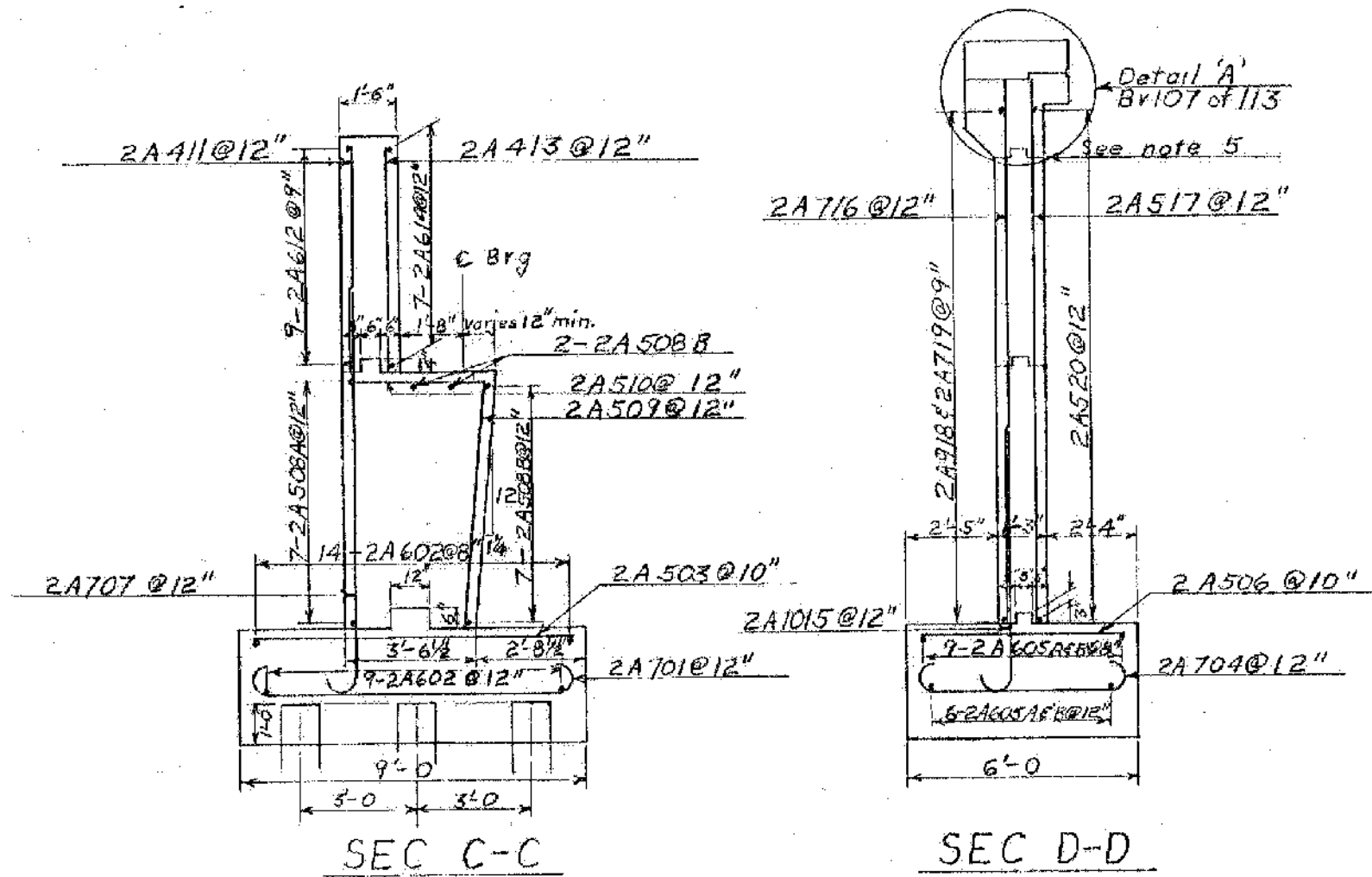
PLAN



SEC A-A



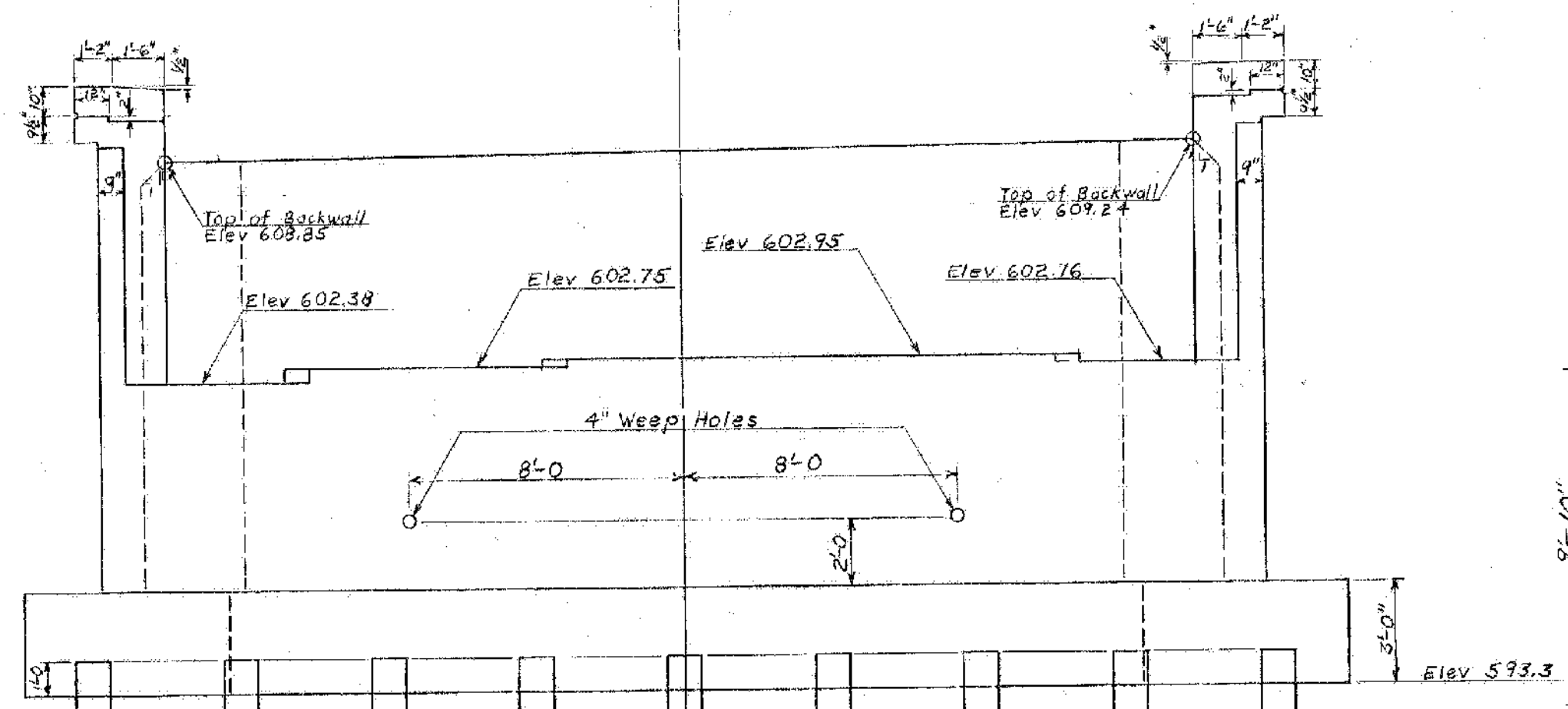
SEC B-B



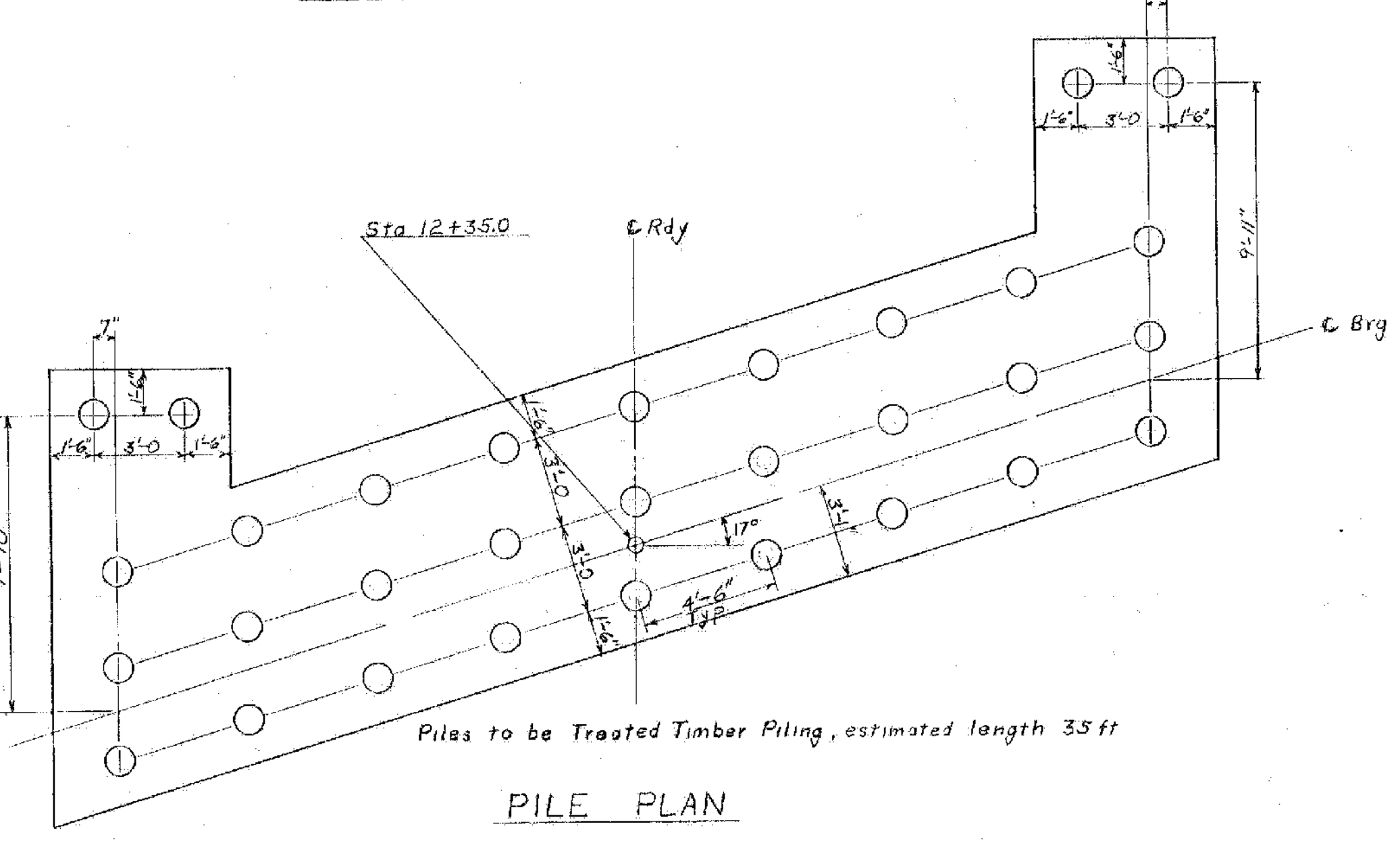
SEC C-C

SEC D-D

- NOTES:
1. For General Notes see Br 100 of 113.
 2. Maximum design pile load is 22 Tons.
 3. See note 3 on Br 100 of 113 for additional pile notes.
 4. All abutment concrete is to be Class B.
 5. No concrete is to be placed above this point until Girders have been profiled and final grade is established by the Engineer. This joint may be omitted and joint at adjacent bridge seat used.
 6. All reinforcing steel to have minimum cover of 2" except 3" in footing.
 7. Slope bridge seats 1/4" per ft to drain except under bearings.
 8. Front face of backwall above bridge seats and inside face of abutment and wings shall be coated with Item 410, Paint Waterproofing.
 9. Item 440, Water Repellent, shall be used on all exposed areas of abutments and wings not otherwise treated.
 10. For details of curved granite curb end block see SCB-D4-65.
 11. For details of Cable Guard Rail Anchorage see Std SH G-3A. Bolts are to be cast in abutment wing. Anchors and first post to be paid for as Structural Steel Item 404A.



ELEVATION



PILE PLAN

MILTON-HIGHGATE
IM MEMB(26)
SHEET 53 OF 70
BRIDGE 89
FOR REFERENCE ONLY

STATE OF VERMONT
DEPARTMENT OF HIGHWAYS
TOWN OF ST. ALBANS - SWANTON
ROUTE NO. VT 36 LOG STA. _____
VT 36 OVER I 89 @ STA 3457+97
ABUTMENT NO. 2
SCALE 1/4"=1'
SURVEYED BY _____
DRAWN BY AGC CHECKED BY DEB
PROJECT NO. I-89-3(3) Cont. 1
SHEET 69 OF 298