

Begin Bridge
Back of Abut. #1
Sta. 100+79.74
Fin. Gr. 399.78
Fixed End

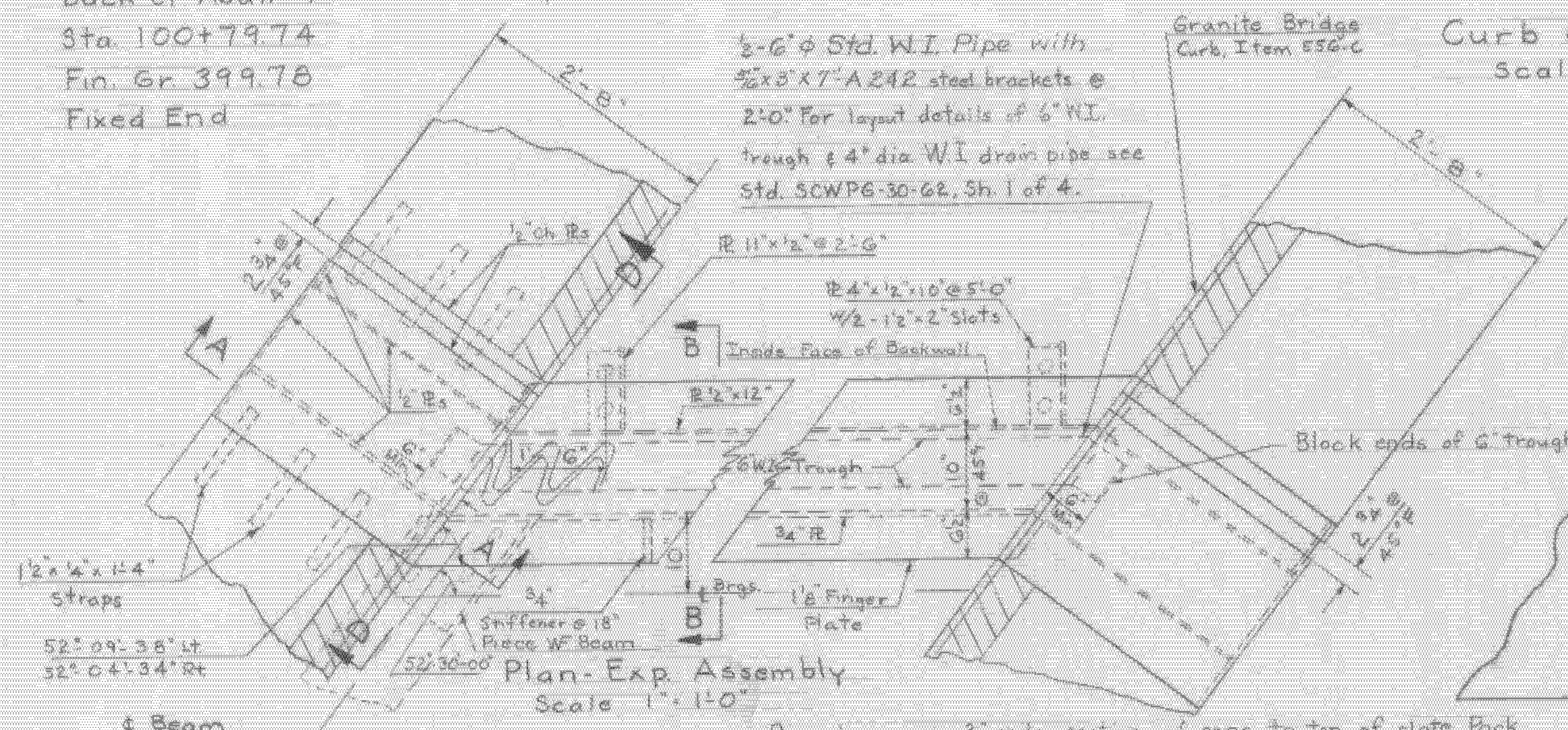
End Bridge
Back of Abut. #2
Sta. 103+85.00
Fin. Gr. 404.66
Exp. End

Curb & Rail Plan
Scale 1"=10'

The ends of the Granite Bridge Curb shall be sawed square where they butt against the metal expansion plates and at the curb joint of the fixed end and at the piers.

Notes:

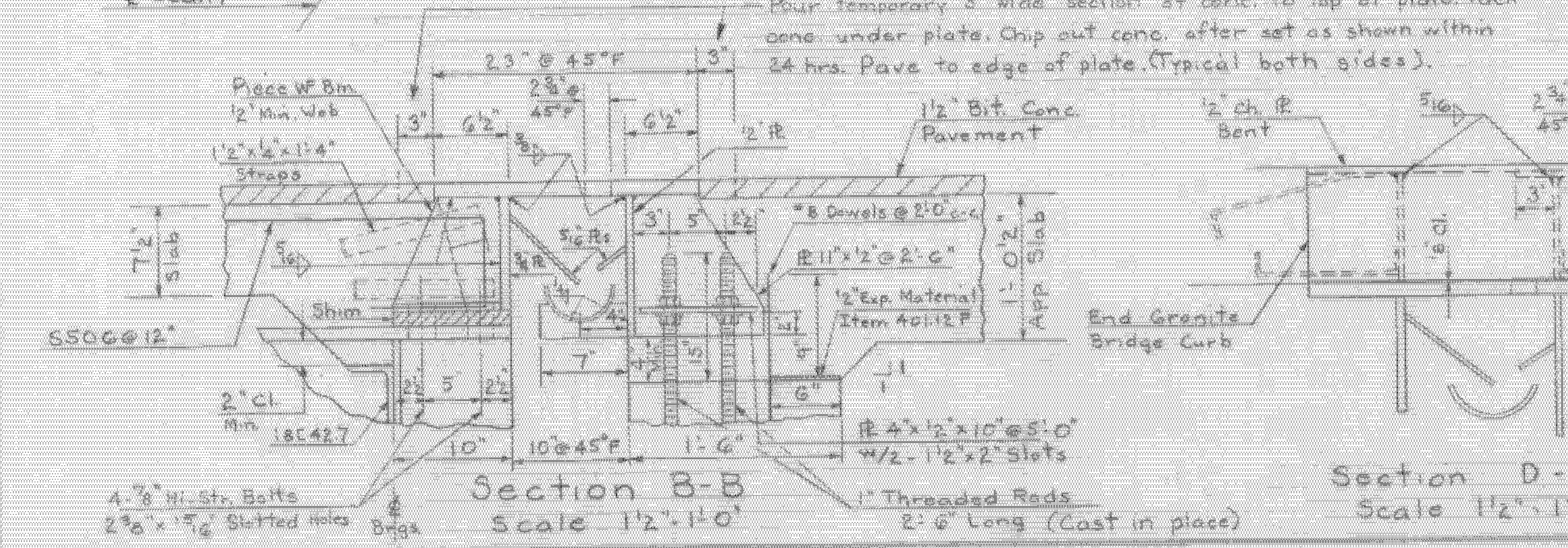
1. For additional Finger Plate and Exp. Dam details see Std. Sh. SCWPG-30-02, sh. 4 of 4.
2. For additional drainage details see Std. Sh. SCWPG-30-60, sh. 1 of 4.
3. All parts of the expansion joint assembly which are exposed to water after erection shall be ASTM A242 steel.
4. For details of Granite Bridge Curb see Std. Sh. SCB-DG-65, Det. A.
5. For details of Bridge Railing see Std. Sh. SB-RI-64, sh. 1 & 2 and SB-R2-65.
6. Use k welds for connecting plates and brackets for 6" dia. trough.
7. Fingers to be symmetrical about ϕ of finger plate. Flame cut from 21"x18" plate.



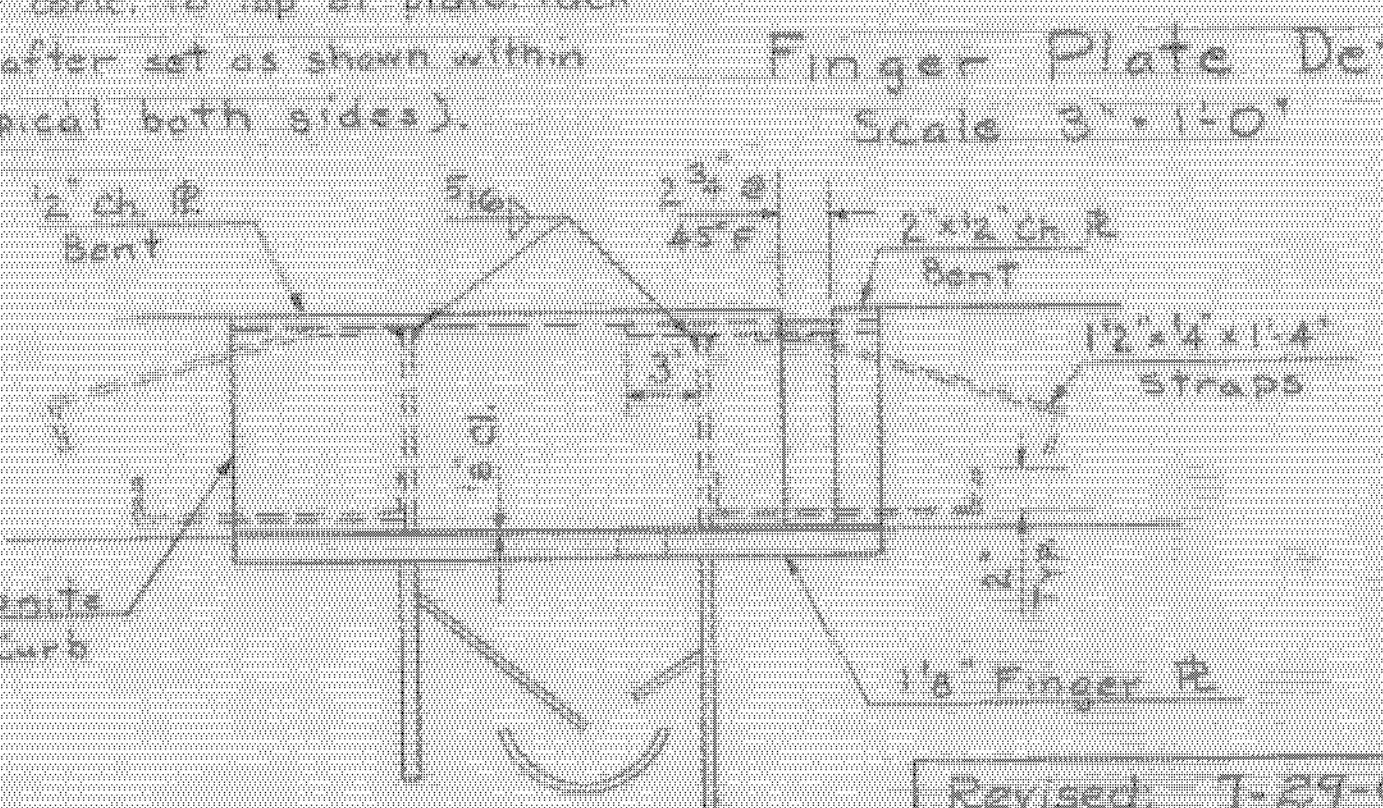
Plan-Exp. Assembly
Scale 1"=1'-0"

Finger Plate Detail
Scale 3"=1'-0"

Pour temporary 2" wide section of conc. to top of plate. Pack conc. under plate. Chip out conc. after set as shown within 24 hrs. Pave to edge of plate. (Typical both sides).

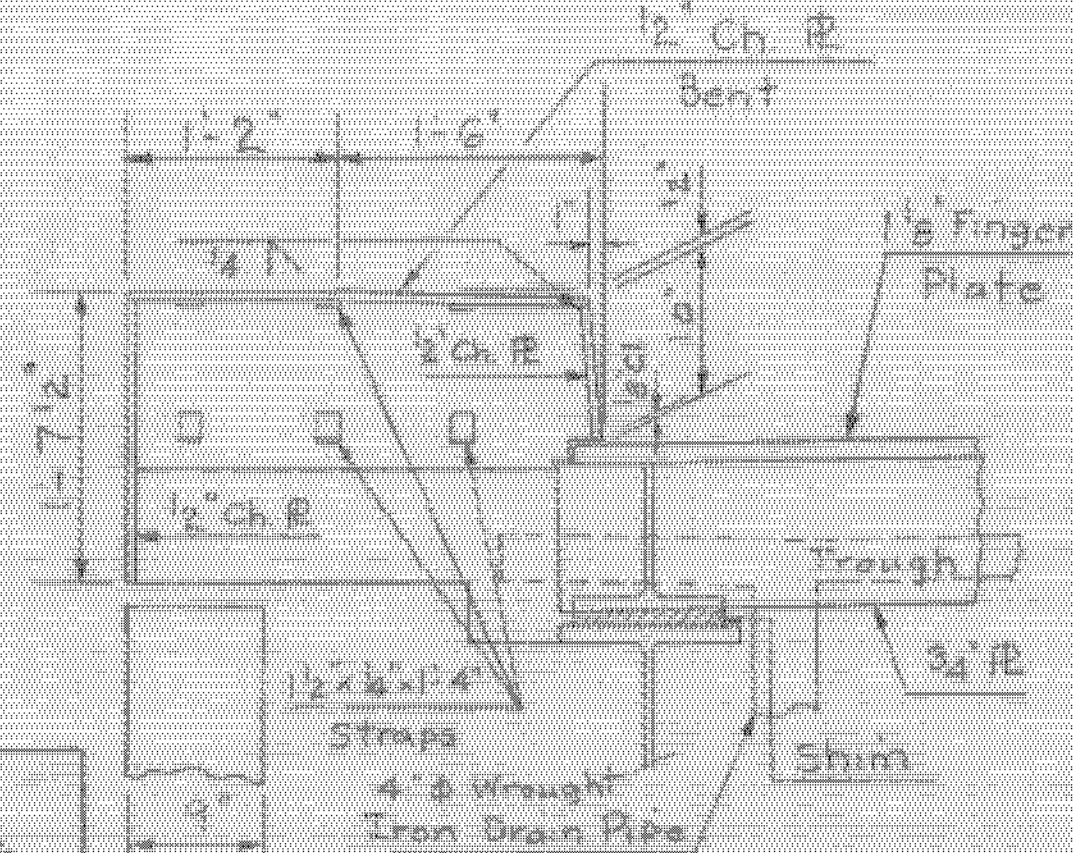


Section B-B
Scale 1/2"=1'-0"



Section D-D
Scale 1/2"=1'-0"

Revised: 7-29-66 J.J.C.
Substituted Std. W.I. for 20 oz. Copper in 6" drain trough and changed length of support bracket.



Section A-A
Scale 1"=1'-0"

MILTON-HIGHGATE
IM MEMB(26)

SHEET 33 OF 70
BRIDGE 85
FOR REFERENCE ONLY

TOWN OF Milton - Georgia
ROUTE No. I 89 LOG STA.
Curb & Rail Plan and Exp. Dam
U.S. 7 over I 89
SCALE As Noted

SURVEYED BY
DRAWN BY A.J.C. CHECKED BY J.J.C.
PROJECT NO. 67-300
SHEET 33 OF 70