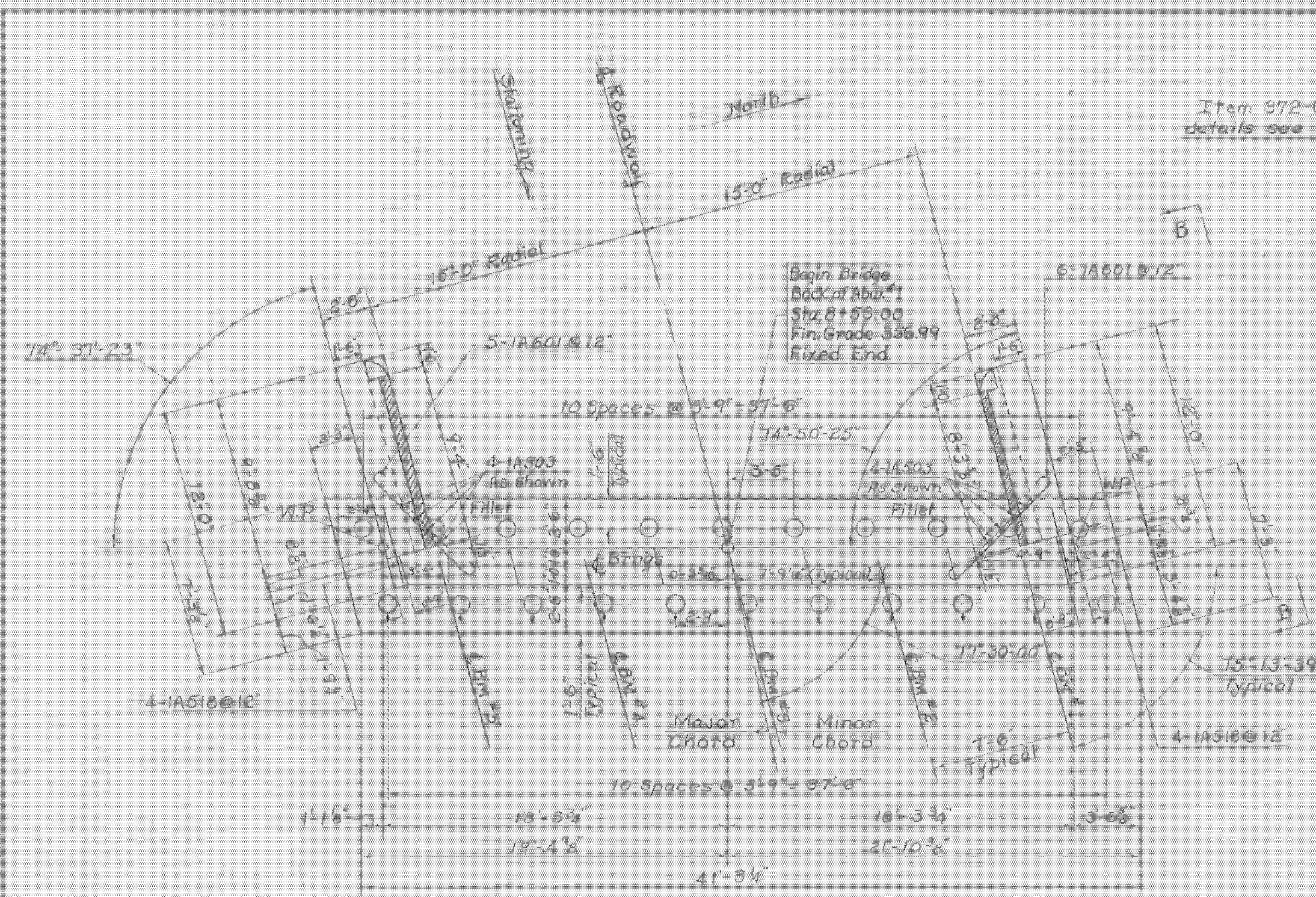
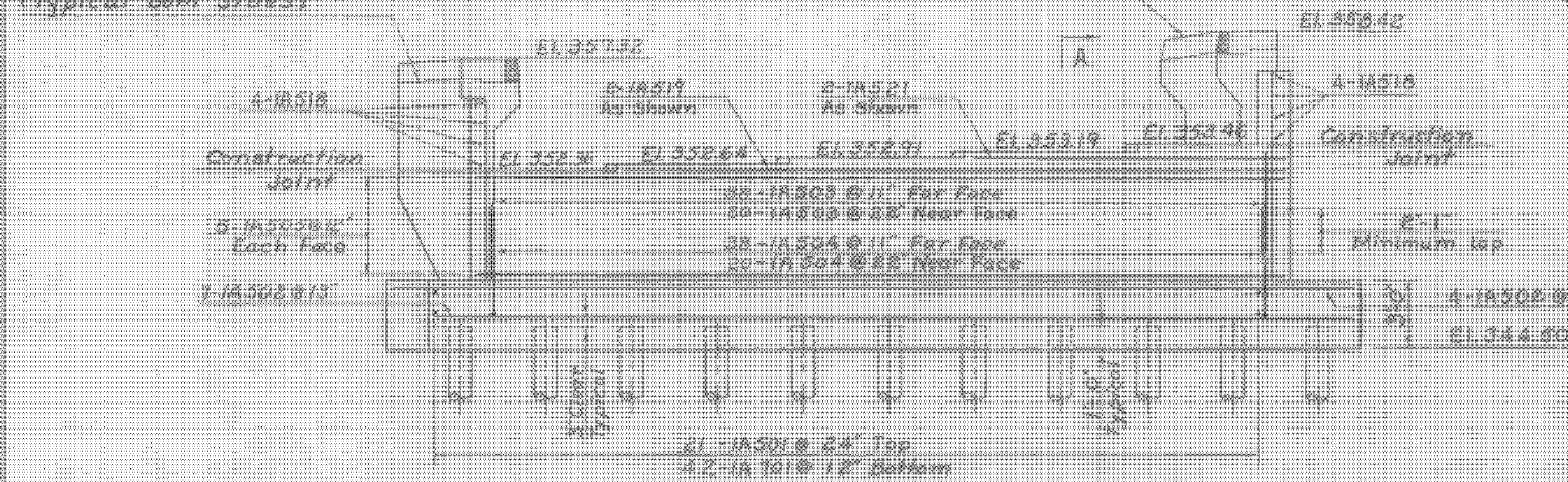


Item 372-C, Type A - For details see Sheet BR-304

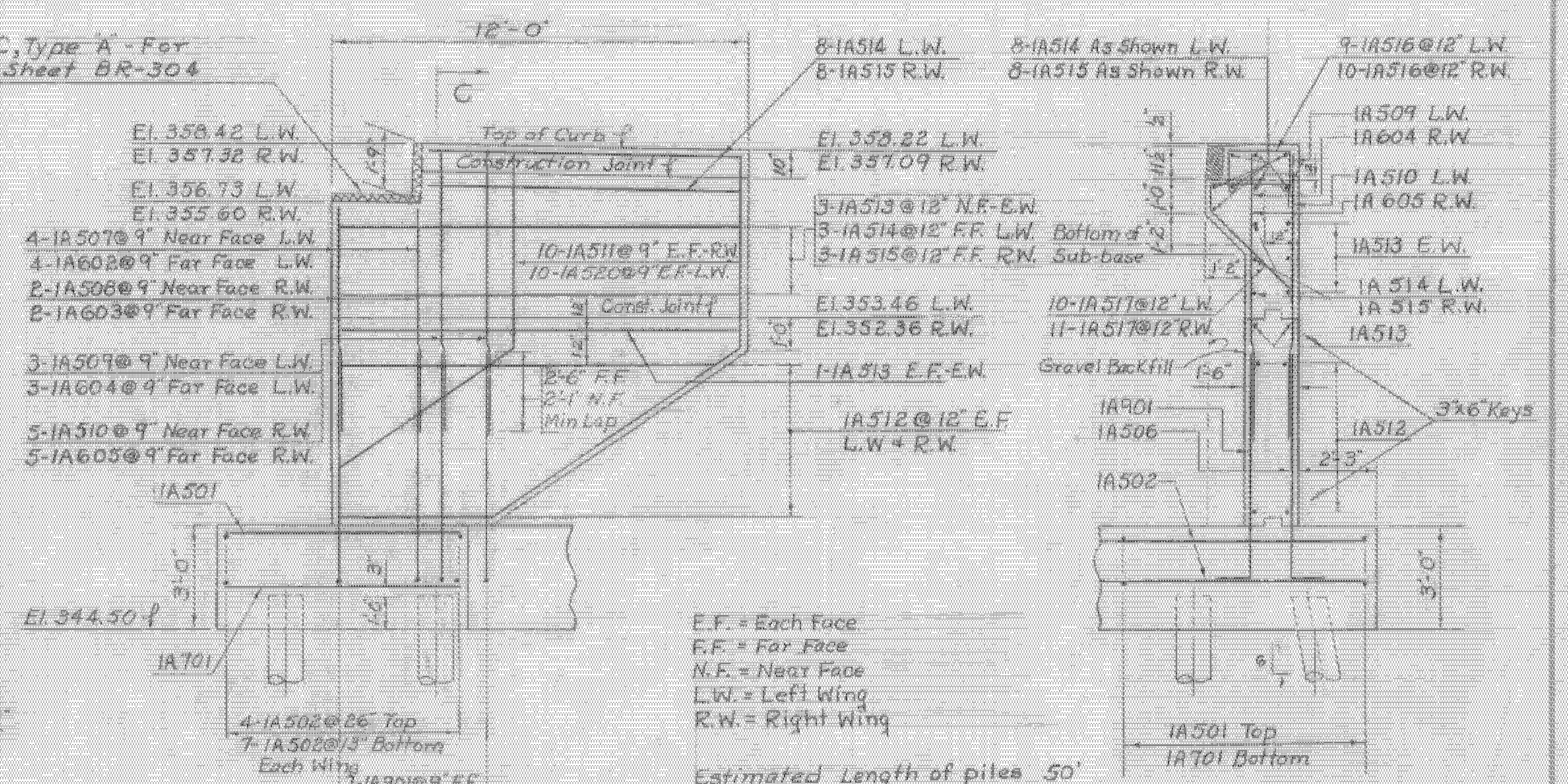


PLAN Scale: 1/4"=1'-0"

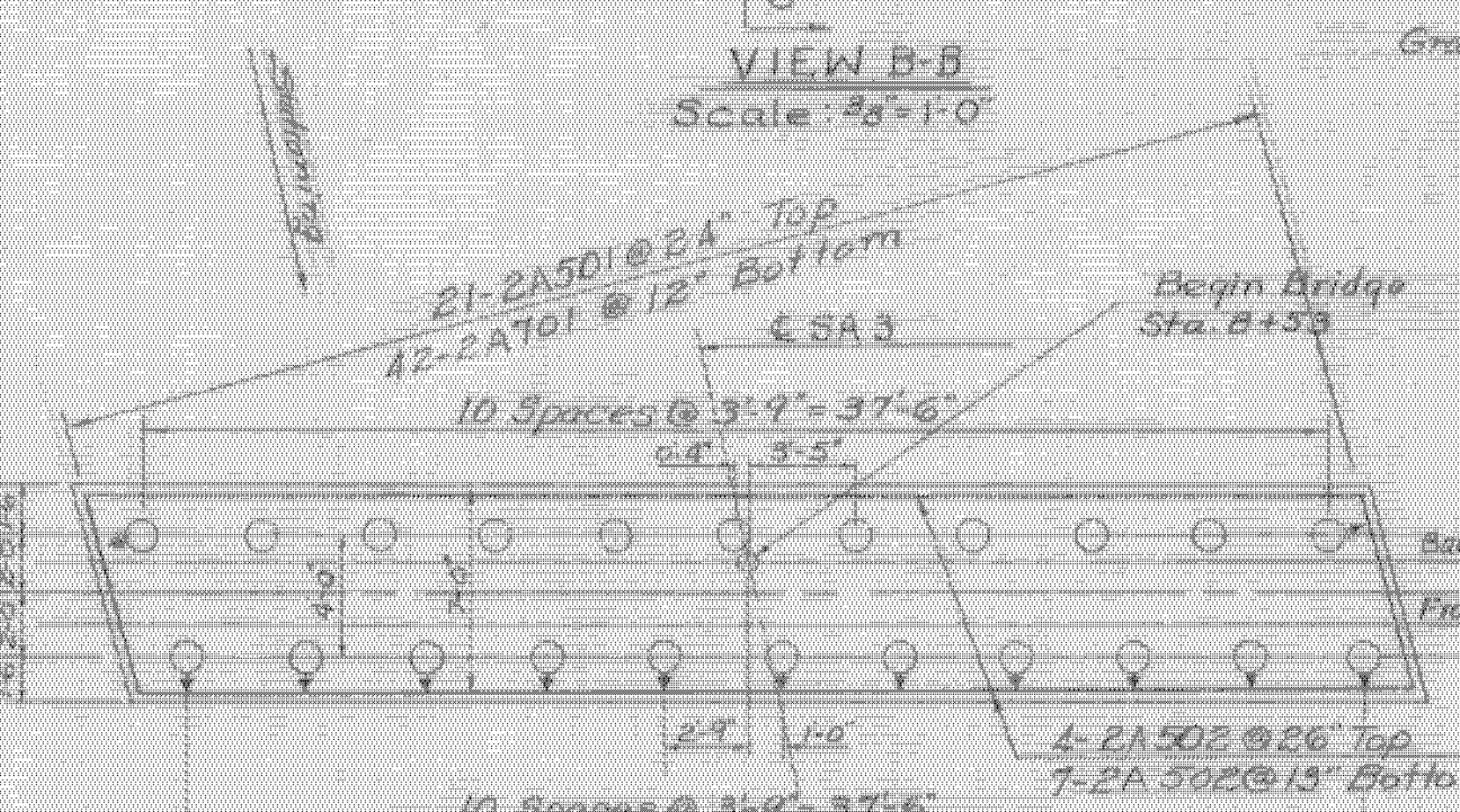
Note: Do not construct above this joint until structural steels in place and final grade is determined (Typical both sides)



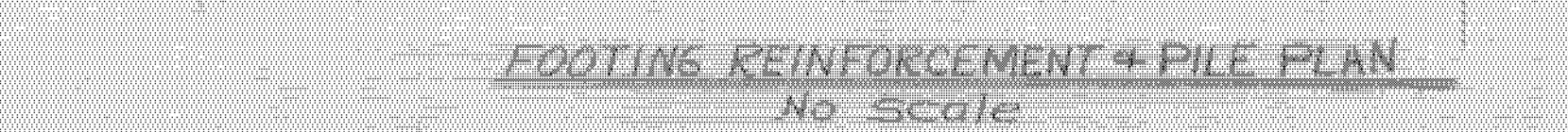
ELEVATION Scale: 1/4"=1'-0"



SECTION C-C Scale: 3/8"=1'-0"

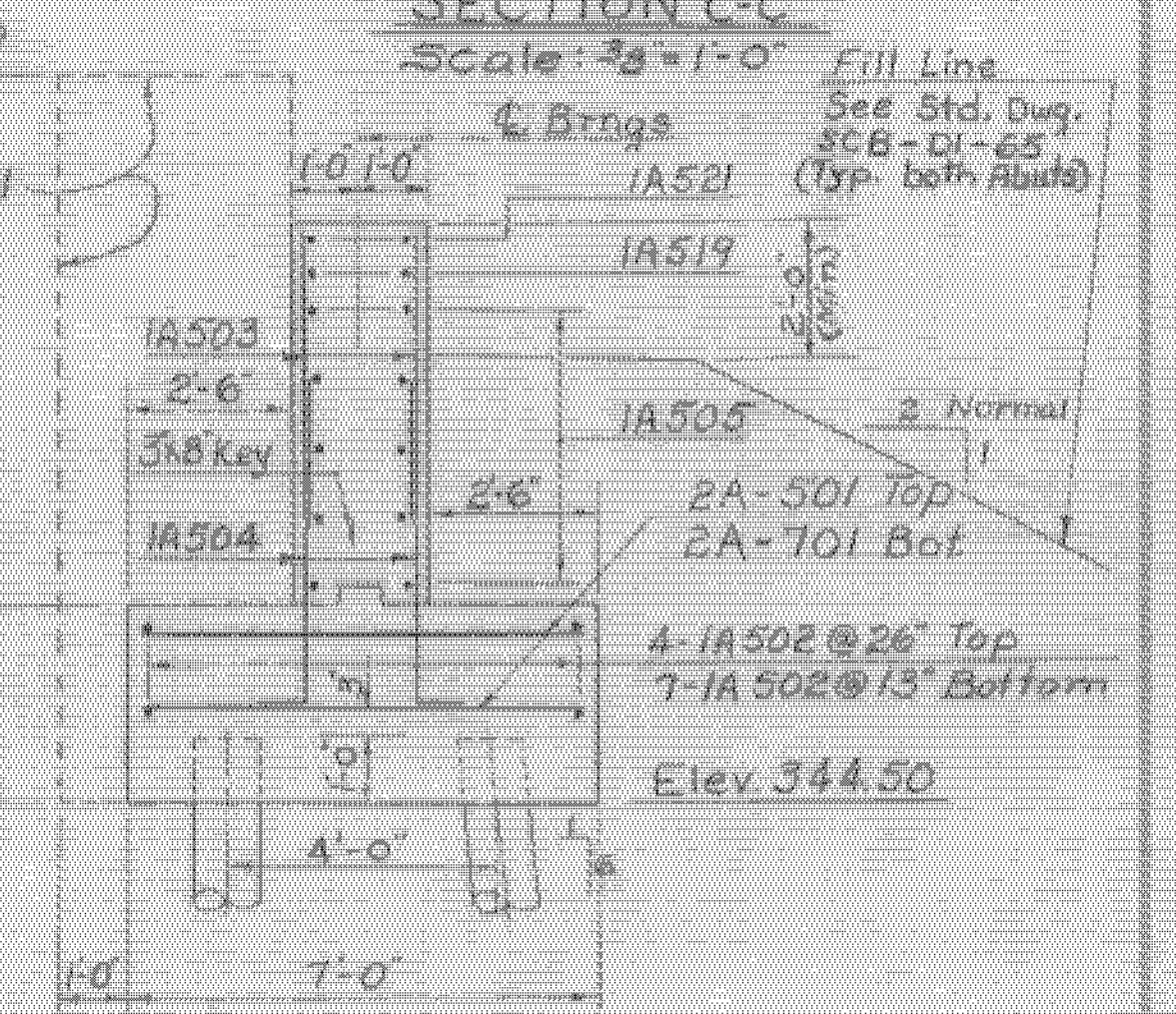


VIEW B-B Scale: 3/8"=1'-0"



FOOTING REINFORCEMENT + PILE PLAN No Scale

- NOTES
- For General Notes see BR-300 and Std. Dwg. SCB-DI-65.
 - All reinforcing steel to have a minimum clear cover of 2" except 3" in the footing.
 - Step bridge seats midway between beams
 - Abutments are designed for a maximum pile bearing pressure of 20 Tons.
 - † Indicates direction of batter for piles
 - For details of dead end anchorage and post attachment at wingwalls see Std. Sheet G-30.
 - For Details of Curtain Walls see Standard Drawings SCB-30-65 and SCB-D2-65, Detail A.



SECTION A-A Scale: 3/8"=1'-0"

MILTON-HIGHGATE IM MEMB(26)
SHEET 28 OF 70
BRIDGE 82
FOR REFERENCE ONLY

STA
DEPT
TOWN of Colchester-Milton
ROUTE No. 189 LOG STA.
Details of Abutment No. 1
SA3 over I89
SCALE AS NOTED
SURVEYED BY Lavallee 5/63
DRAWN BY J.J.C. CHECKED BY J.W.
PROJECT No. I89-3(34)
SHEET 135 OF 419