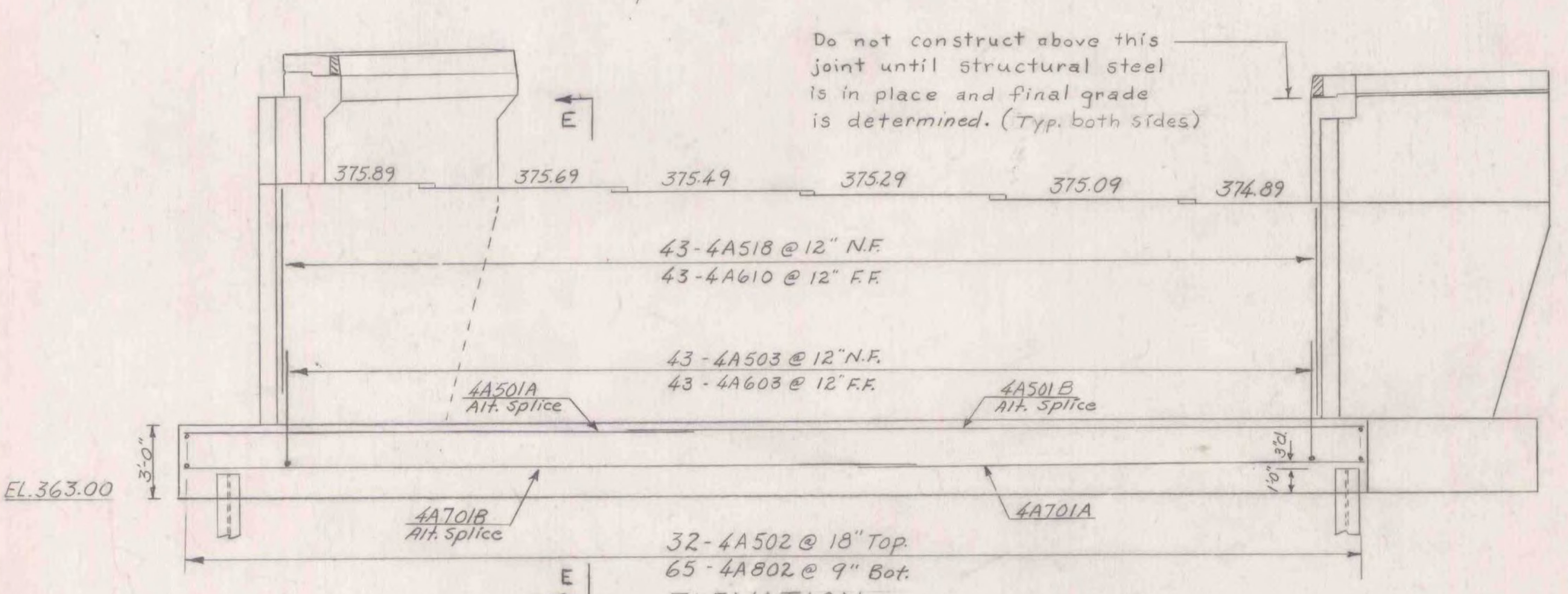
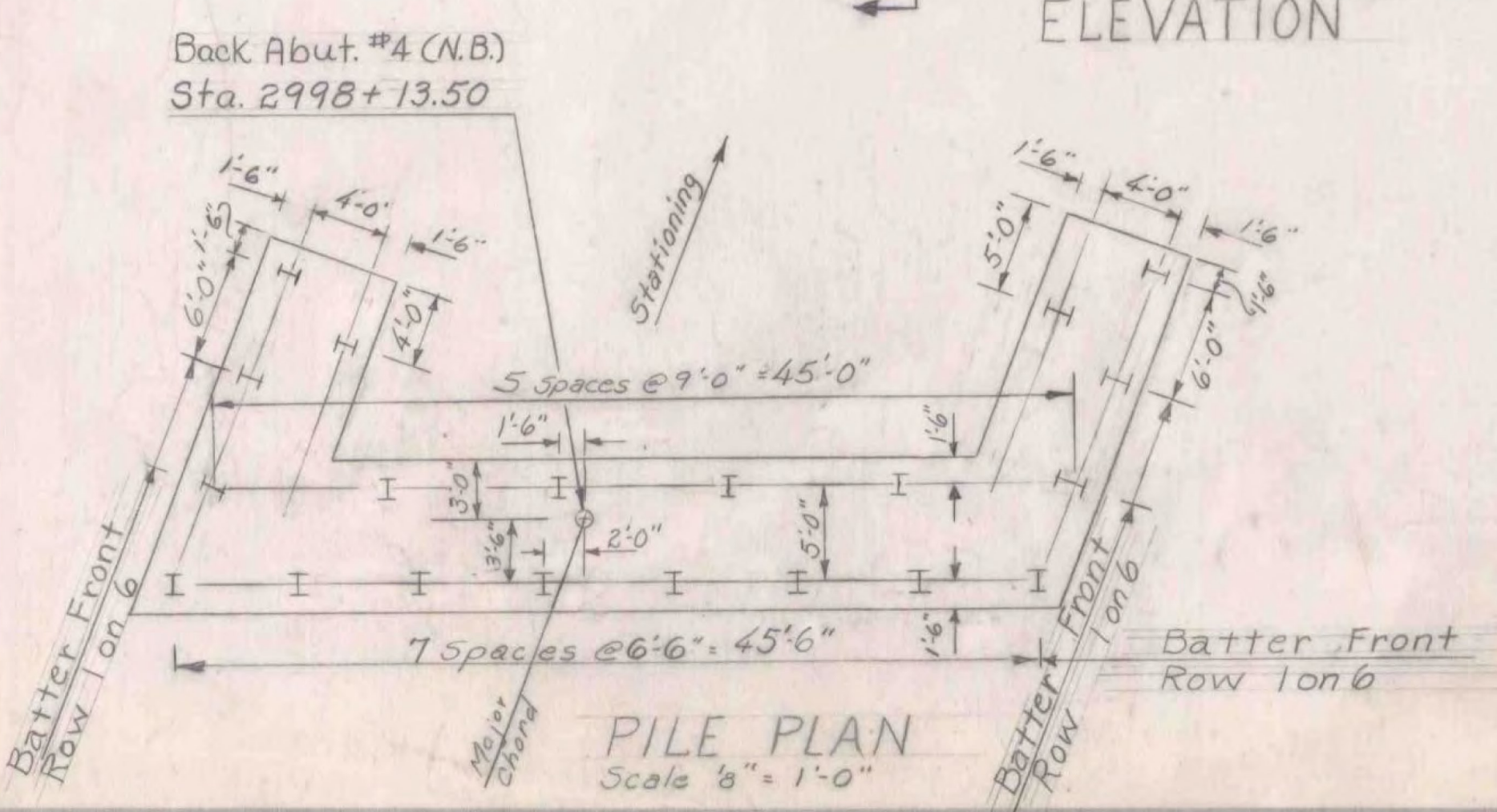


PLAN

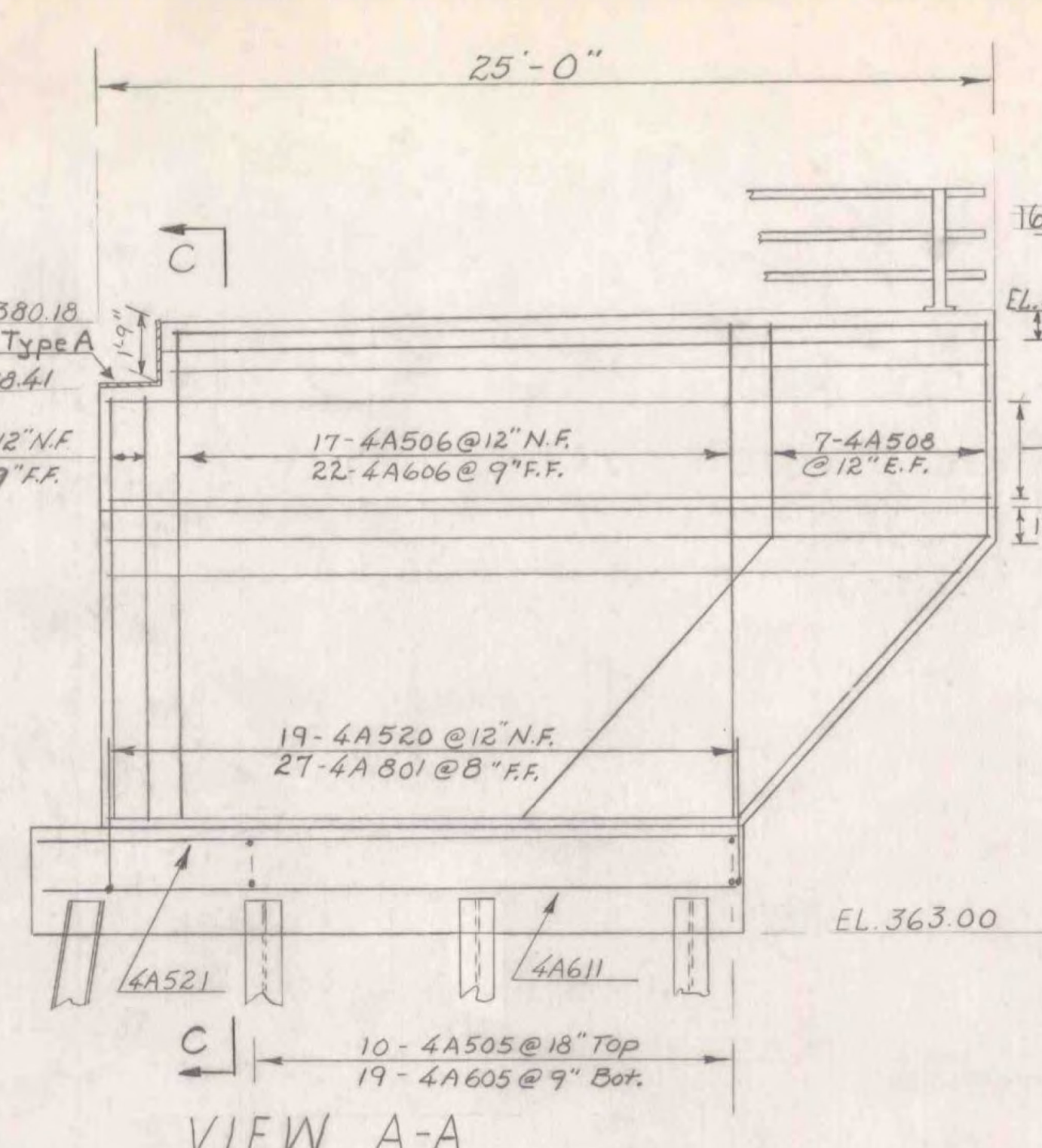


ELEVATION

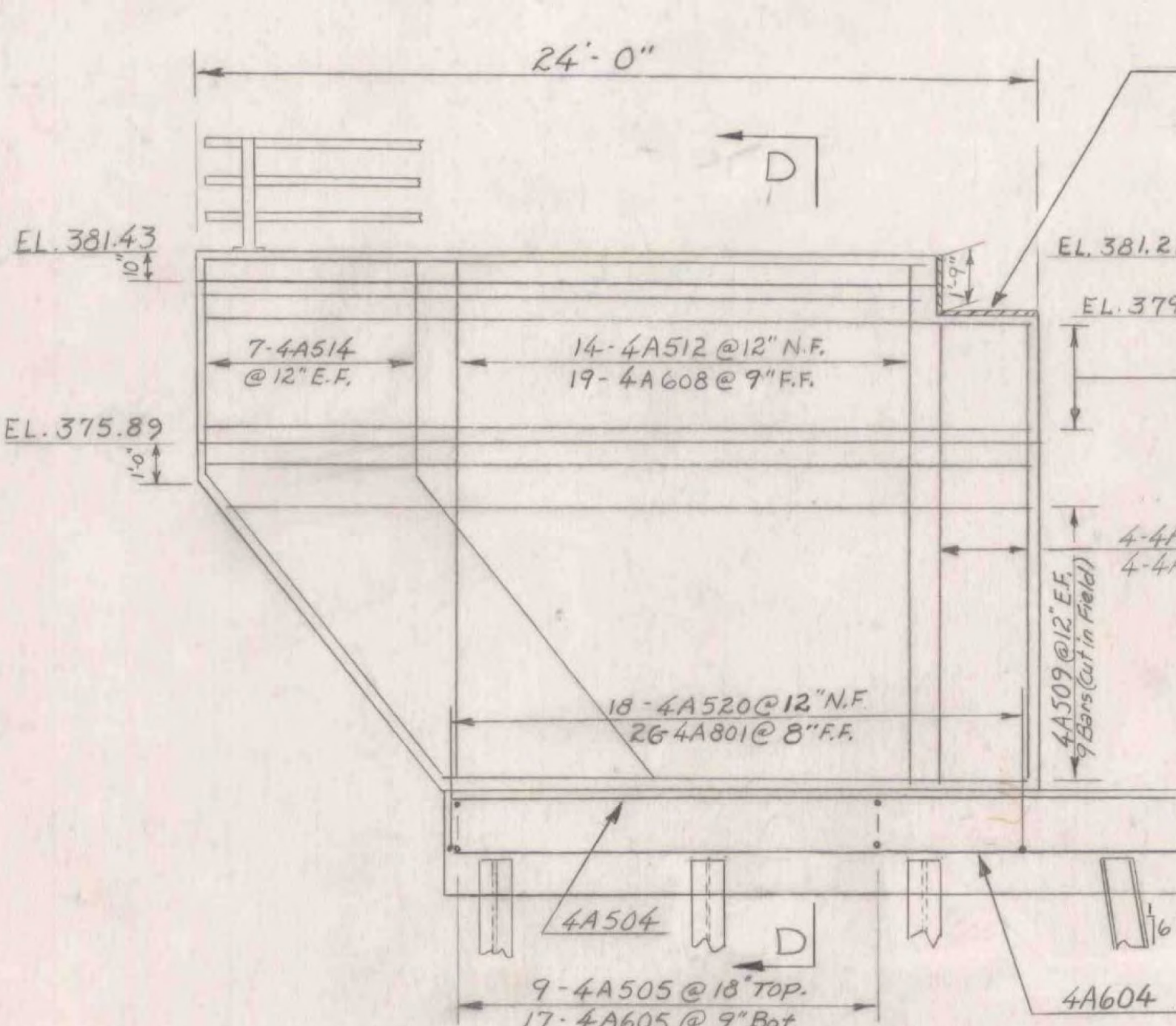


PILE PLAN
Scale 1/8" = 1'-0"

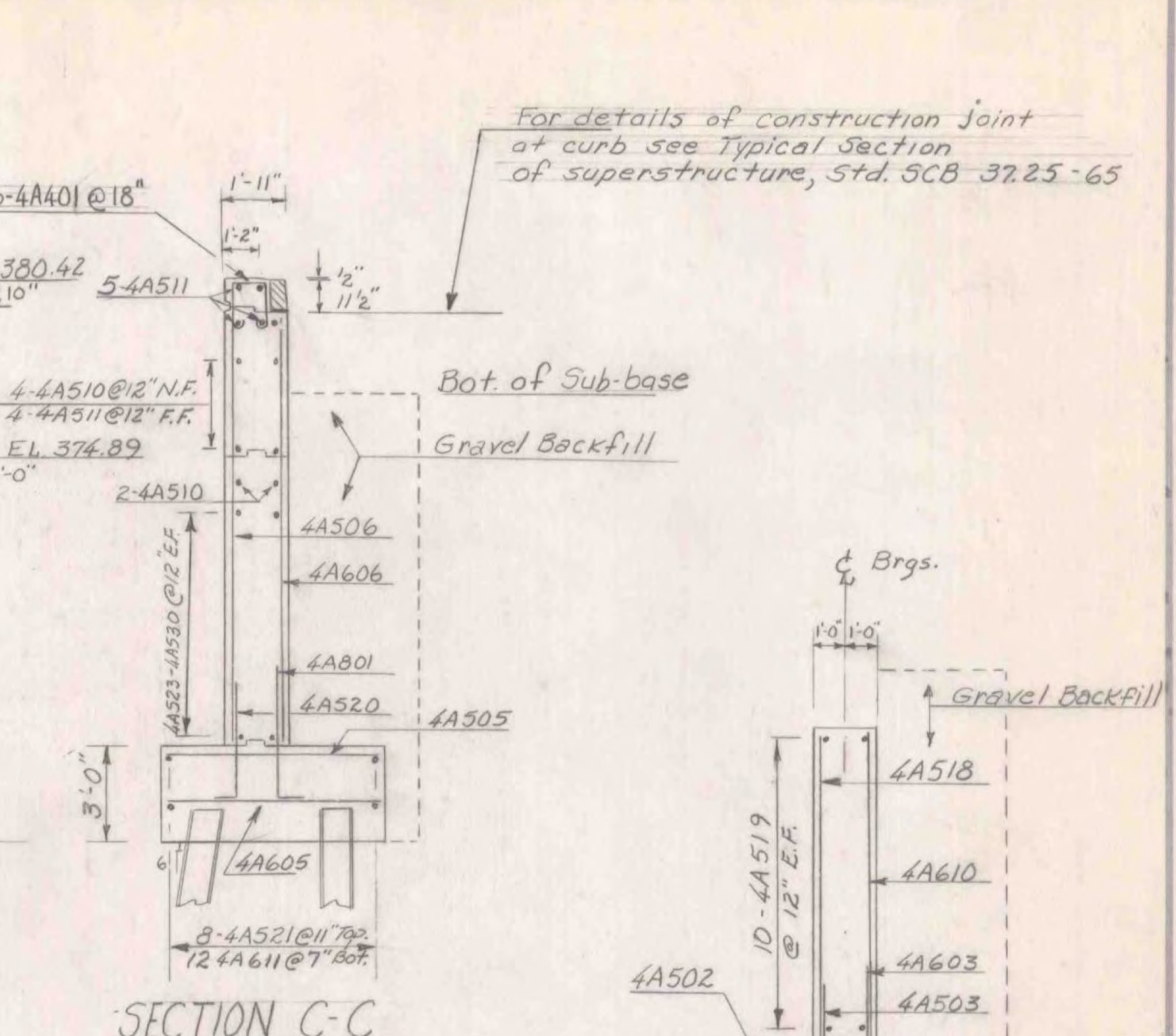
| No. of Piles | Size | Estimated Length of Piles | Splices Allowed for Piles not Exceeding Plan Length (to be paid for only if used.) | Splices Estimated for Piles Exceeding Plan Length (to be paid for only if used.) |
|--------------|--------|---------------------------|--|--|
| 20 | 12BP53 | 35 | — | 4 |



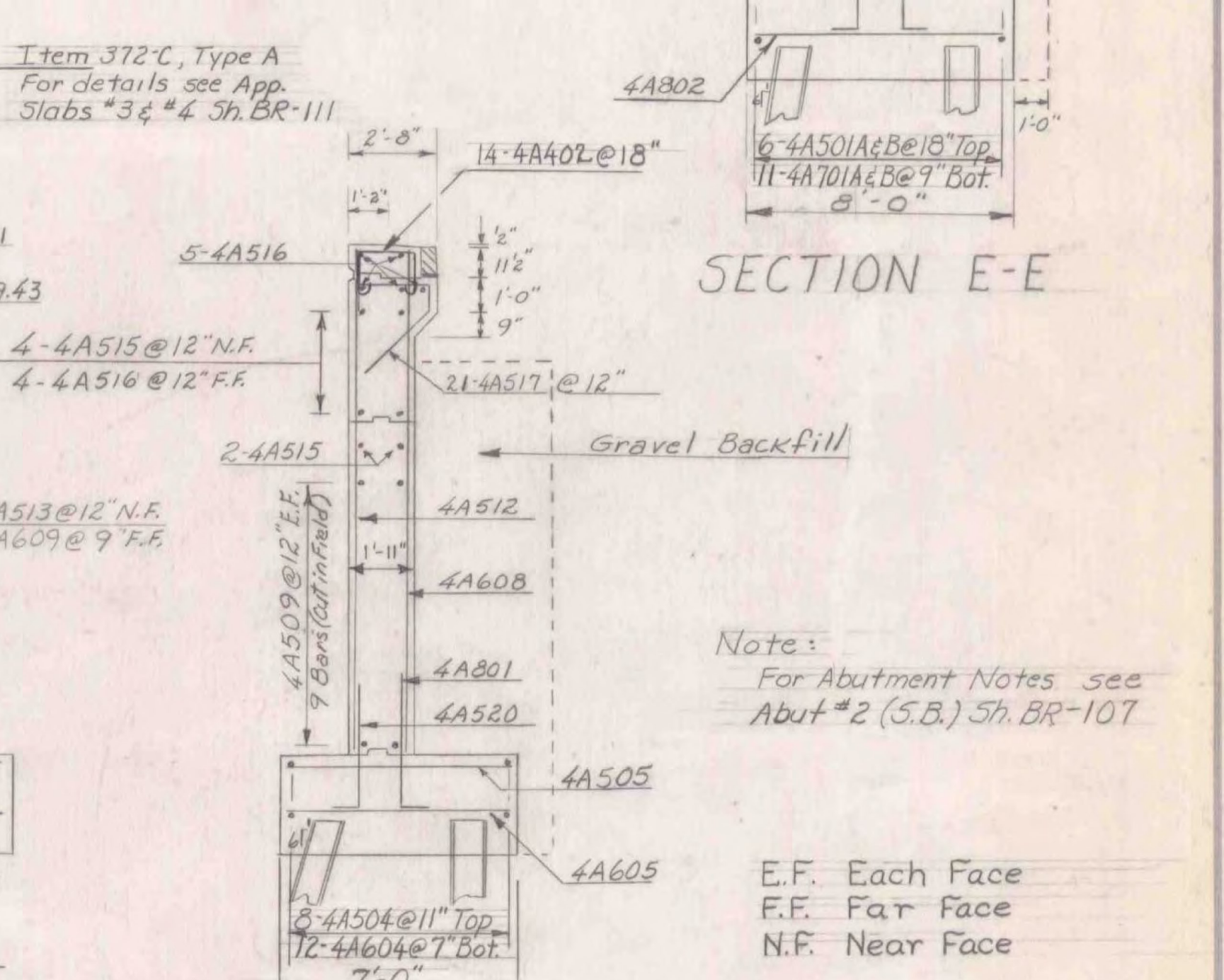
VIEW A-A



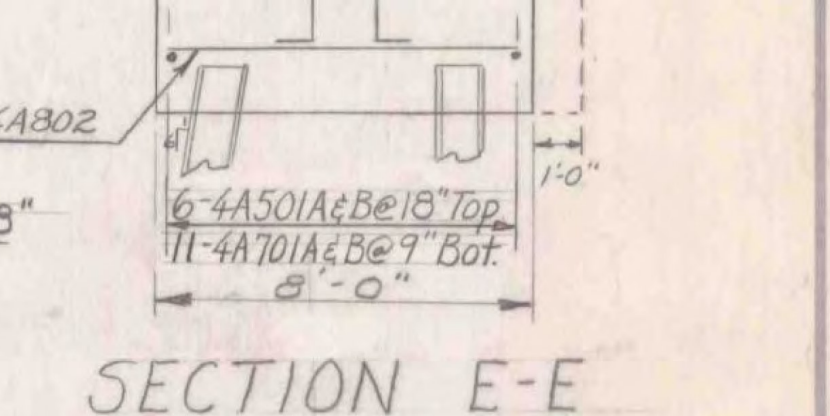
VIEW B-B



SECTION C-C



SECTION D-D



SECTION E-E

Note:
For Abutment Notes see Abut #2 (S.B.) Sh. BR-107

E.F. Each Face
F.F. Far Face
N.F. Near Face

| ITEM NO. | ITEM | UNIT | NET | TOTAL | FINAL |
|----------|-------------------------|------|-----|-------|-------|
| | CHAN. EXCAV. OF EARTH | C.Y. | | | |
| | CHAN. EXCAV. OF ROCK | C.Y. | | | |
| | UNCLASS. CHAN. EXCAV. | C.Y. | | | |
| | STRUCT. EXCAV. | C.Y. | | | |
| | CONC. CLASS AA (MOD.) | C.Y. | | | |
| | CONC. CLASS B (MOD.) | C.Y. | | | |
| | REINF. STEEL | LBS. | | | |
| | ASPHALTIC-ASB. COATING | S.Y. | | | |
| | TREATED TIMBER PILING | | | | |
| | SPICES FOR STEEL PILING | | | | |
| | STEEL PILING | | | | |
| | UNTREATED TIMBER PILING | | | | |

WILLISTON - GEORGIA
IM MEMB(25)
SHEET 36 OF 38
BRIDGES 84 N AND S
FOR REFERENCE ONLY

STATE OF VERMONT
DEPARTMENT OF HIGHWAYS

TOWN OF Milton-Georgia

ROUTE NO. I 89 LOG STA. I 89 over Town Road #6

Abutment #4 (N.B.)

SCALE 1/4" = 1'-0" & as noted

SURVEYED BY: _____

DRAWN BY: J.W. CHECKED BY: A.I.C. 2/11/65

PROJECT NO. I 89-3(39)

SHEET 67 OF 278