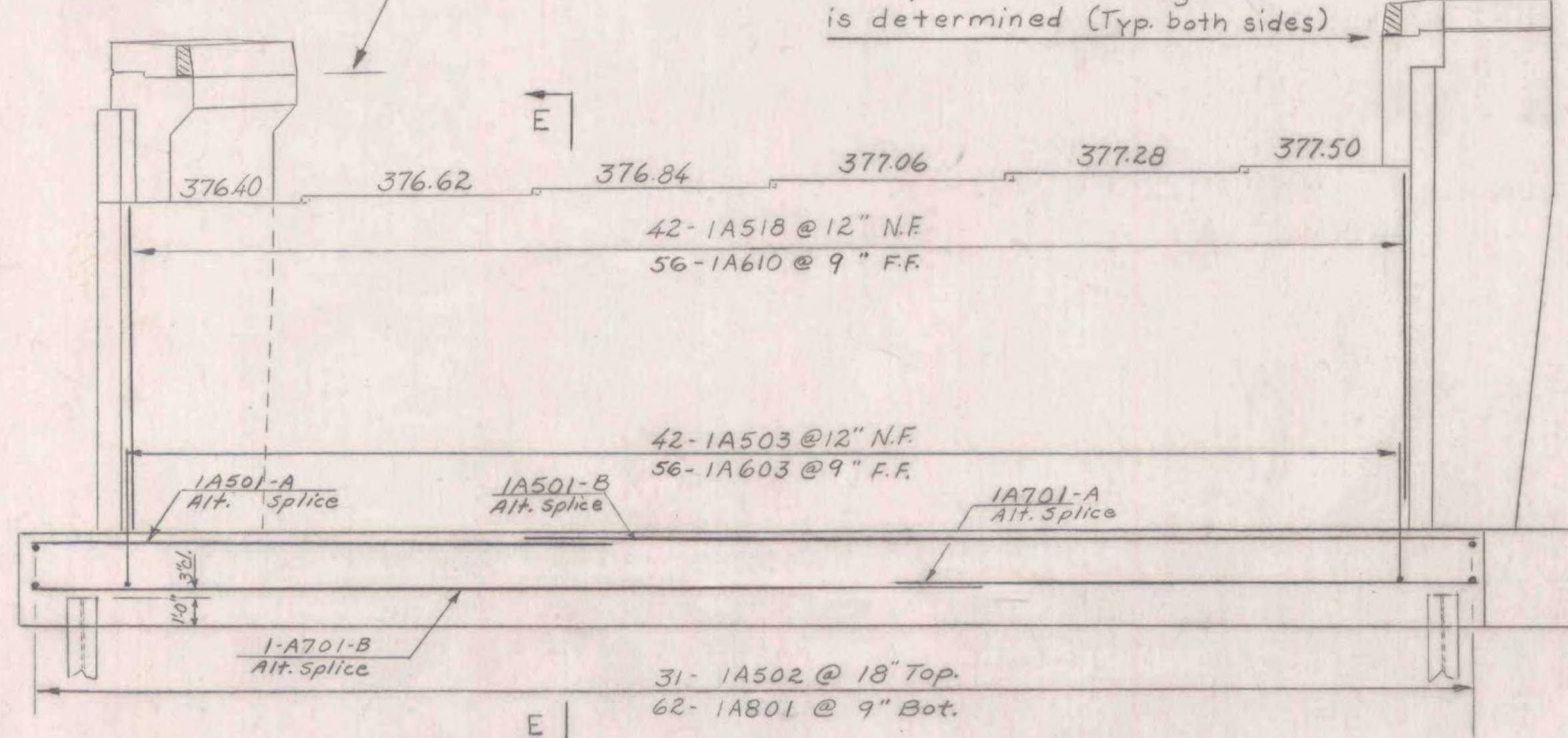


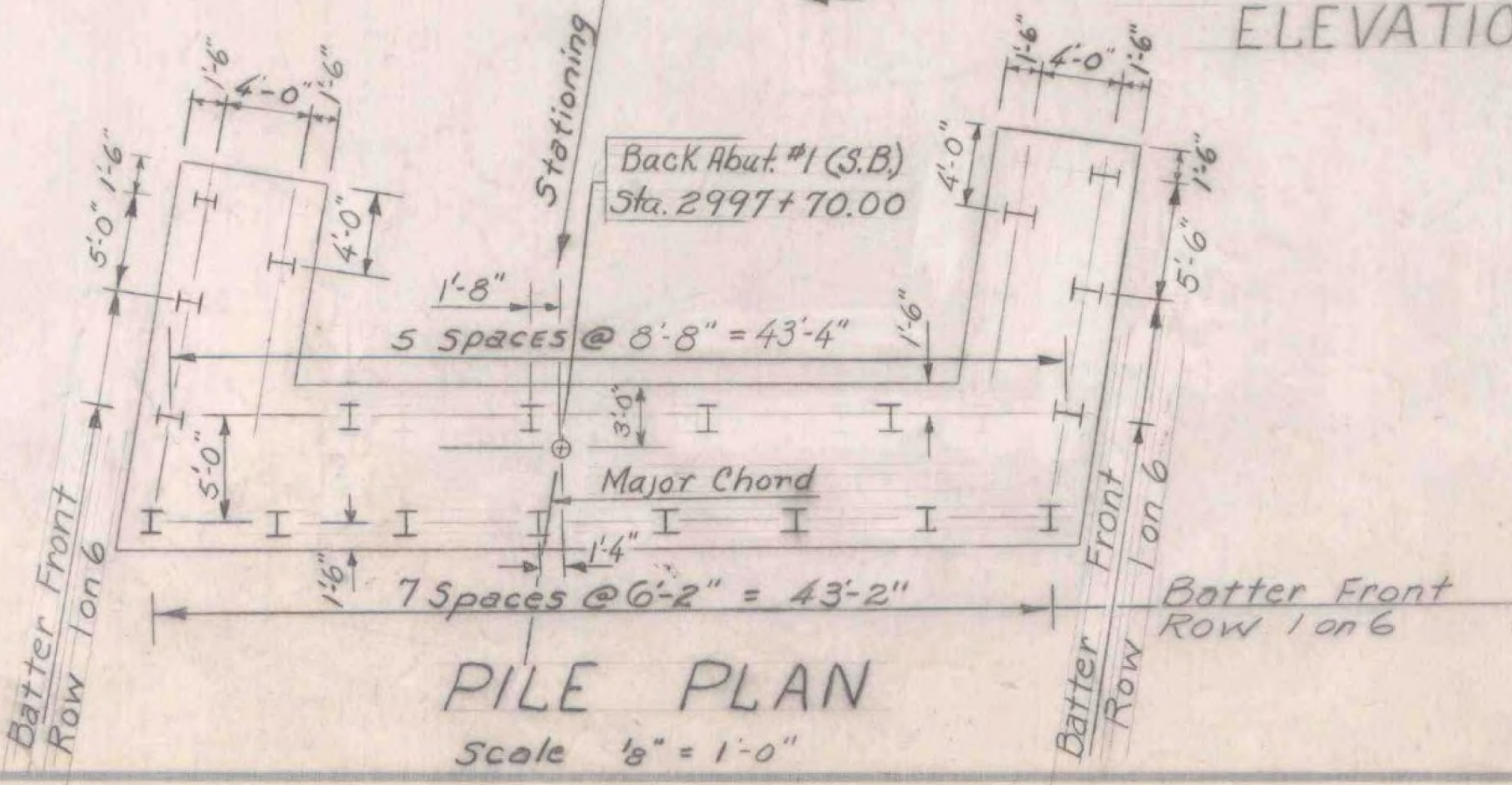
PLAN

For details of construction joint at curb see Typical Section of Superstr. Std. Sh. SCB-37.25-65.

Do not construct above this joint until structural steel is in place and final grade is determined (Typ. both sides)



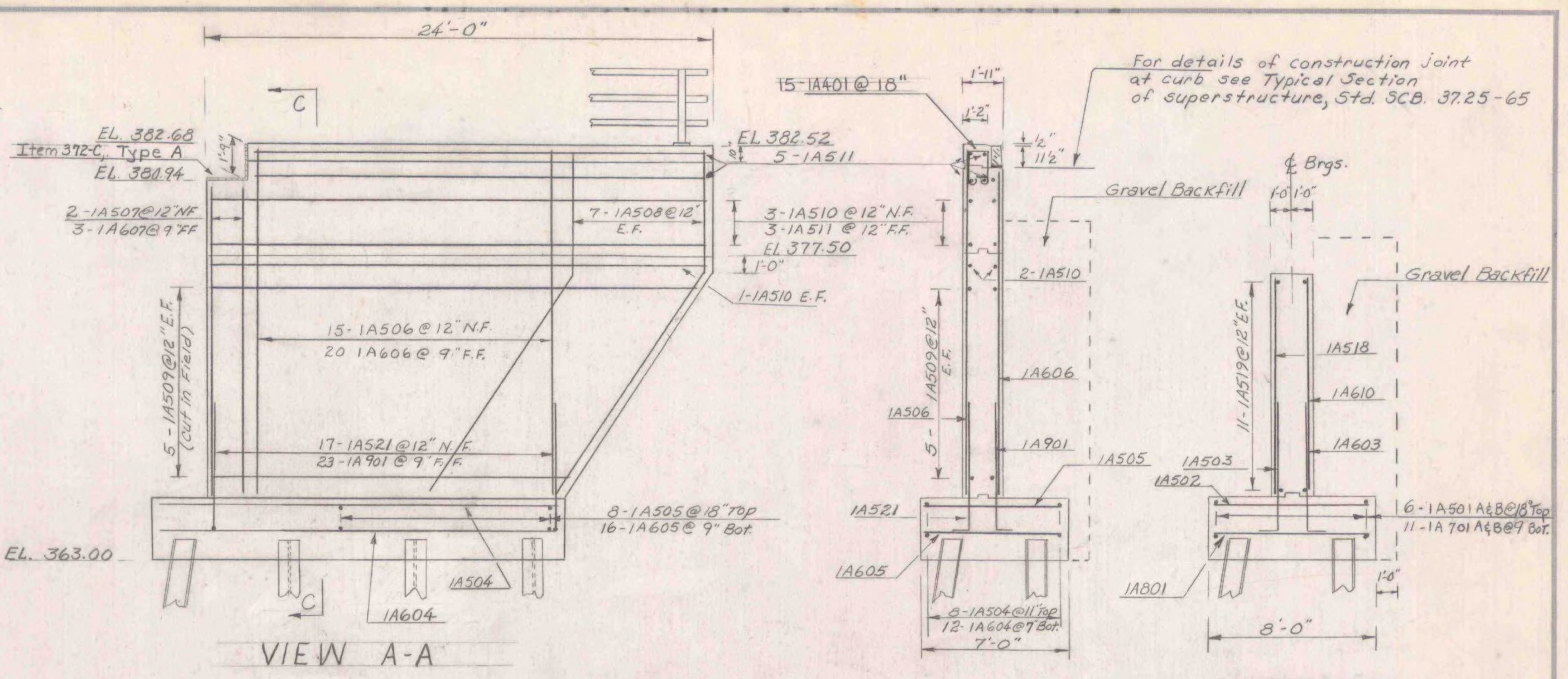
ELEVATION



PILE PLAN  
Scale 1/8" = 1'-0"

No. of Piles	Size	Estimated Length of Piles	Splices Allowed for Piles not Exceeding Plan Length (to be paid for only if used.)	Splices Estimated for Piles Exceeding Plan Length (to be paid for only if used.)
20	12BP53	30		4

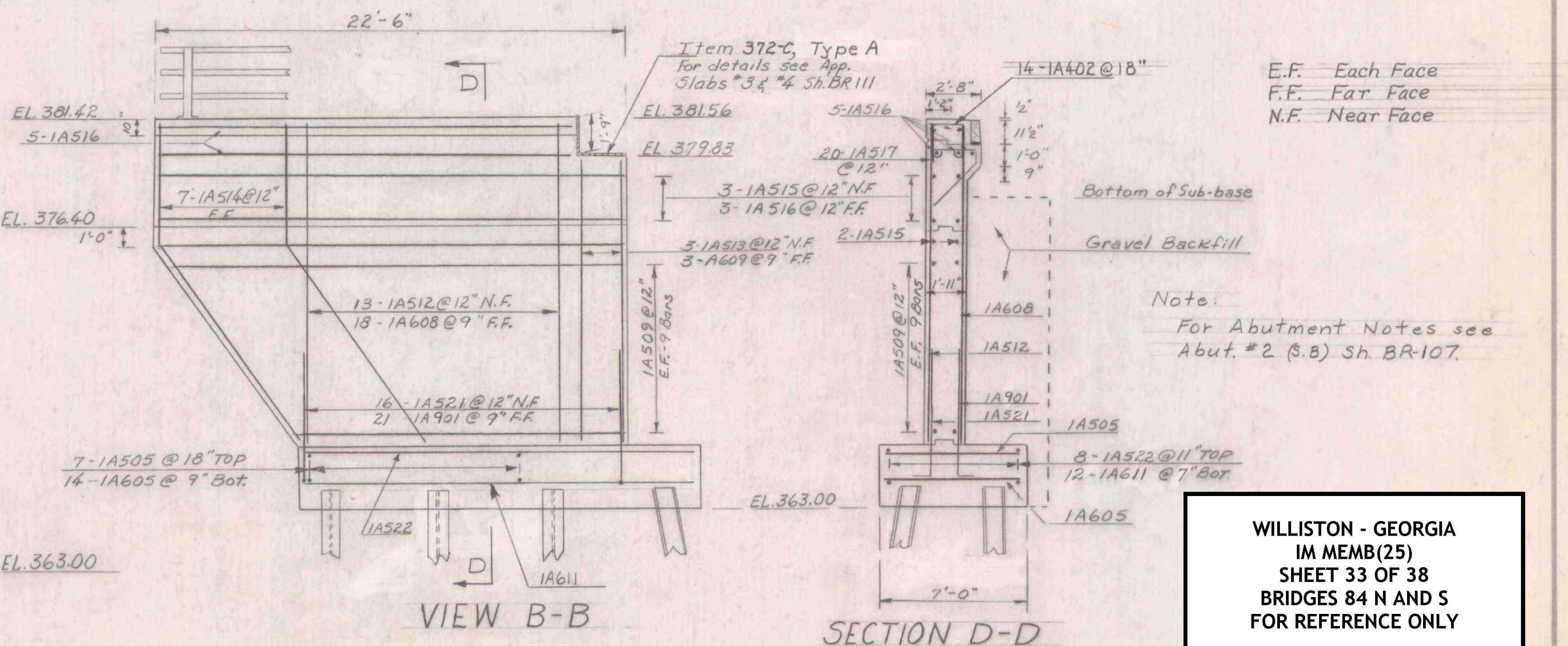
Note: Steel Piles (12BP53) shall be driven to point bearing on ledge unless the designed bearing capacity of 45 tons per pile attained above ledge elevation. (Typical all abutments)



VIEW A-A

SECTION C-C

SECTION E-E



VIEW B-B

SECTION D-D

E.F. Each Face  
F.F. Far Face  
N.F. Near Face

Note: For Abutment Notes see Abut. #2 (S.B) Sh. BR-107.

ITEM NO.	ITEM	UNIT	NET	TOTAL	FINAL
	CHAN. EXCAV. OF EARTH	C.Y.			
	CHAN. EXCAV. OF ROCK	C.Y.			
	UNCLASS. CHAN. EXCAV.	C.Y.			
	STRUCT. EXCAV.	C.Y.			
	CONC. CLASS AA (MOD.)	C.Y.			
	CONC. CLASS B (MOD.)	C.Y.			
	REINF. STEEL	LBS.			
	ASPHALTIC-ASB. COATING	S.Y.			
	TREATED TIMBER PILING	L.F.			
	SPLICES FOR STEEL PILING	EA.			
	STEEL PILING	L.F.			
	UNTREATED TIMBER PILING	L.F.			

**WILLISTON - GEORGIA**  
IM MEMB(25)  
SHEET 33 OF 38  
BRIDGES 84 N AND S  
FOR REFERENCE ONLY

STATE OF VERMONT  
DEPARTMENT OF HIGHWAYS

TOWN OF Milton-Georgia

ROUTE No. I 89 LOG STA. I 89 over Town Road #6

Abutment #1 (S.B.)

SCALE 1/4" = 1'-0" & as noted

SURVEYED BY \_\_\_\_\_

DRAWN BY J.W. CHECKED BY A.J.C.

PROJECT No. I 89-3(39)

SHEET 64 OF 278