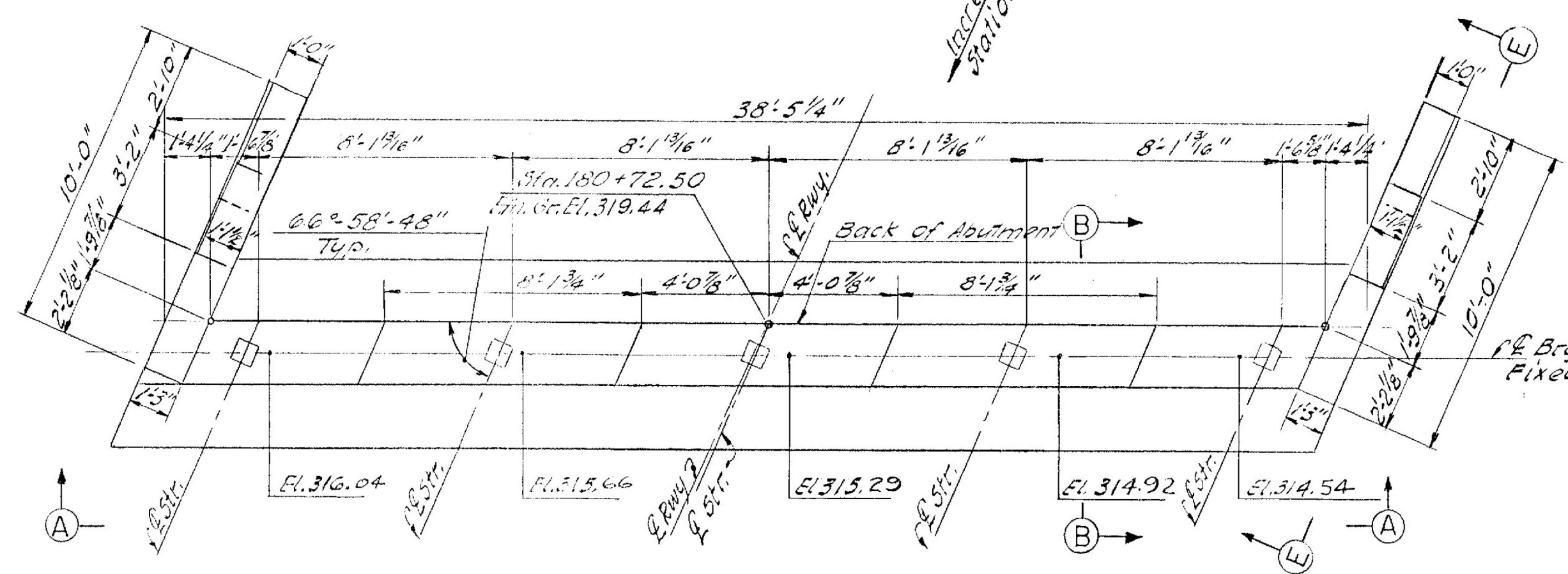
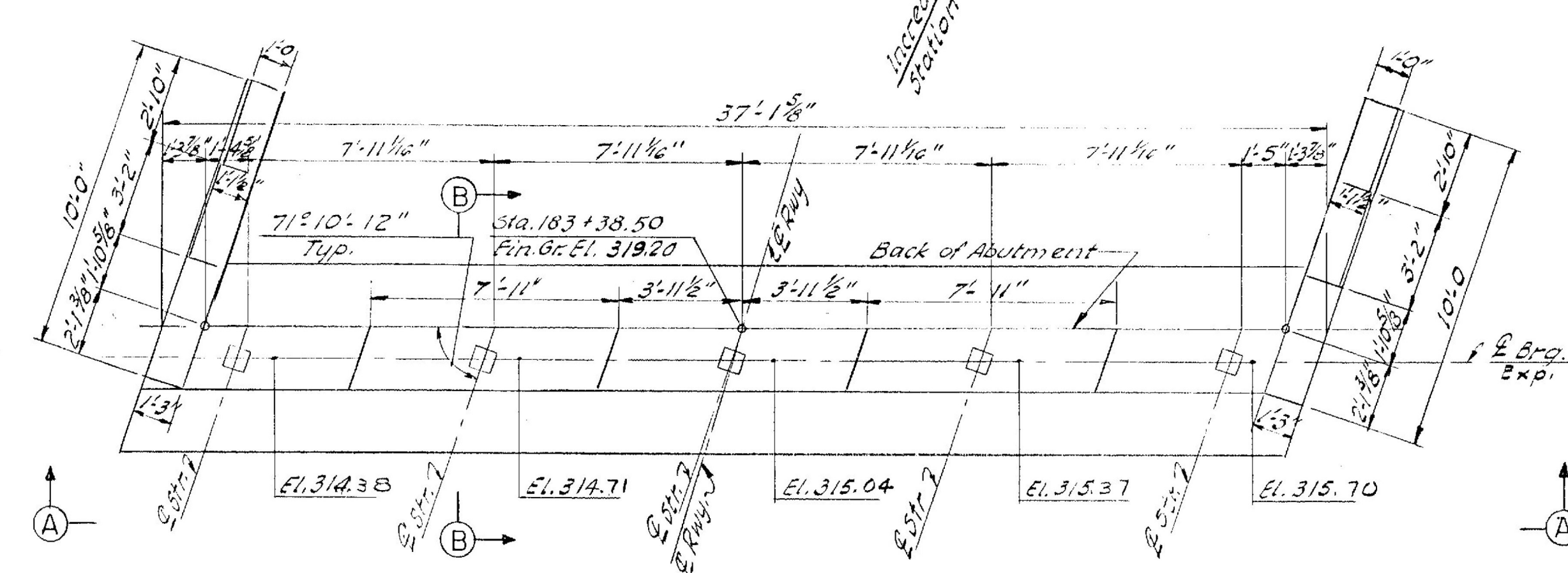


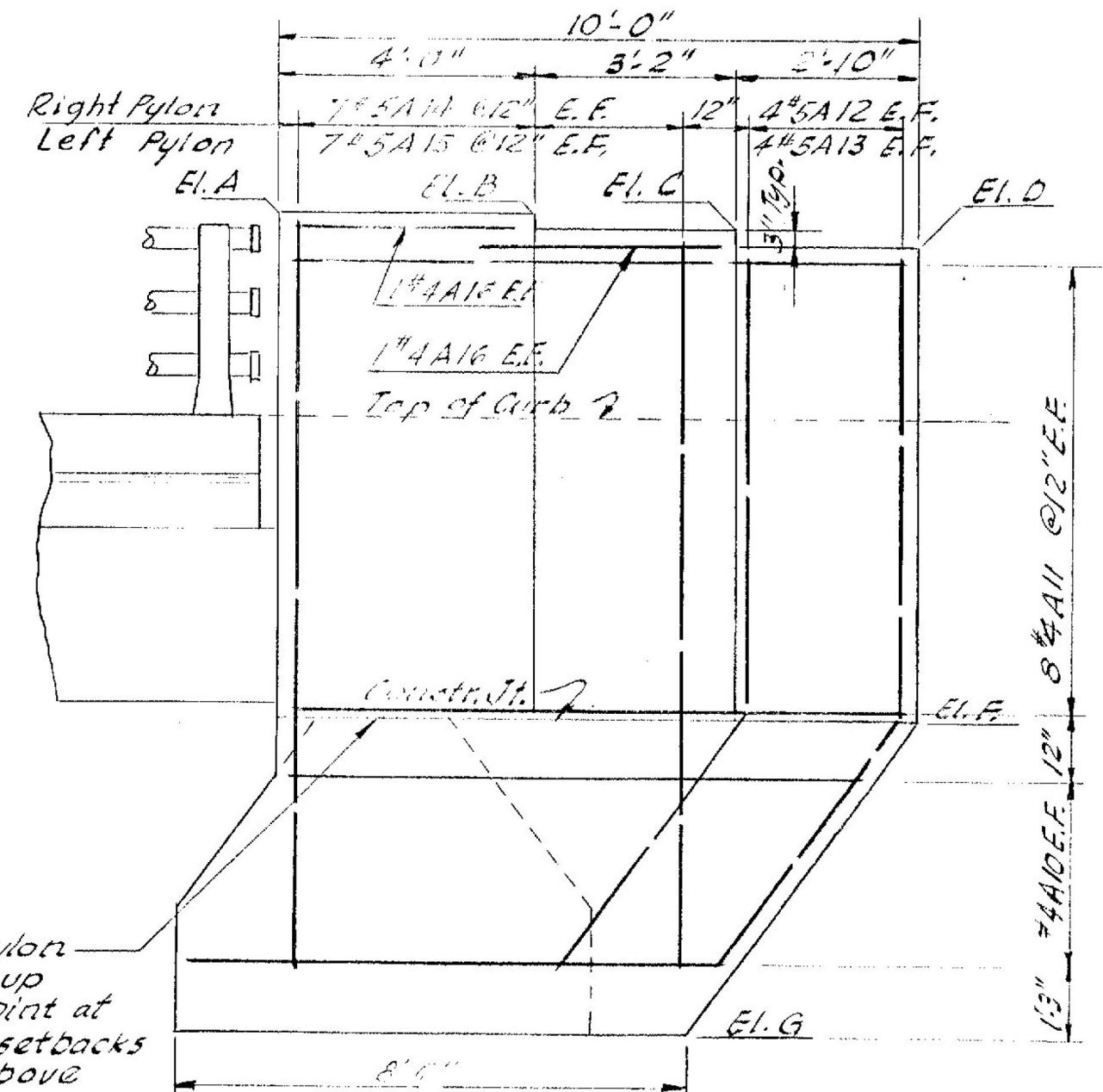
The inside face of the pylon shall be straight for the full length of the pylon and no setback shall be made above the curb. (Typ.)



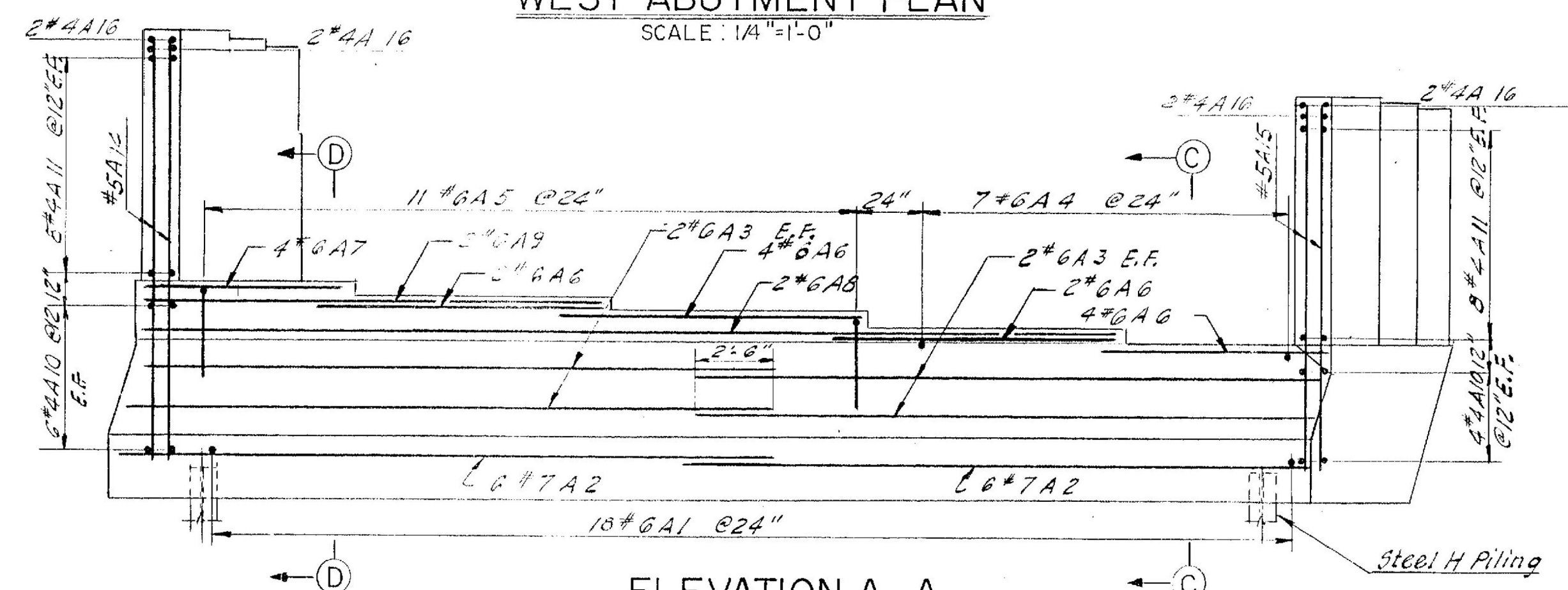
WEST ABUTMENT PLAN
SCALE: 1/4" = 1'-0"



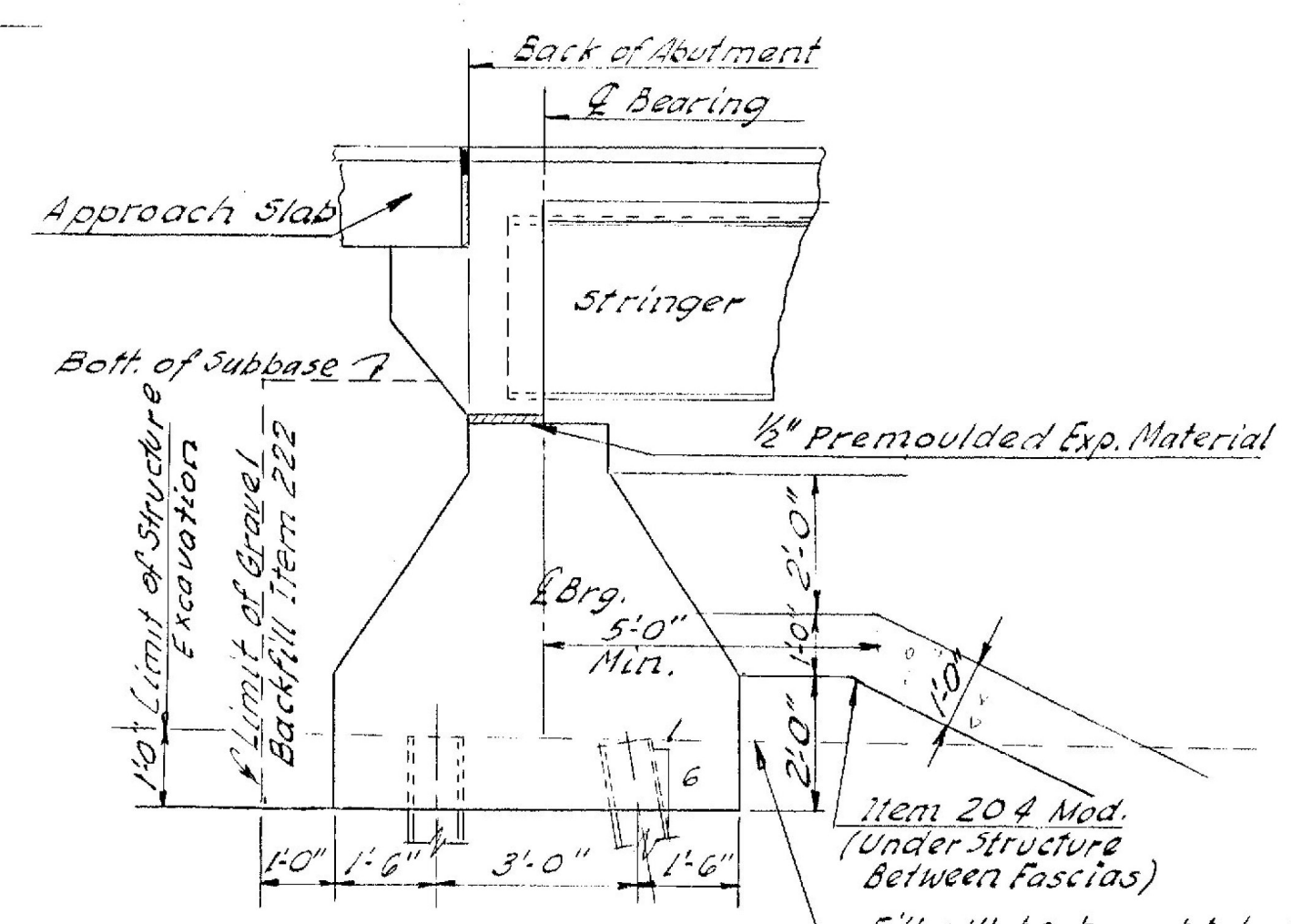
EAST ABUTMENT PLAN
SCALE: 1/4" = 1'-0"



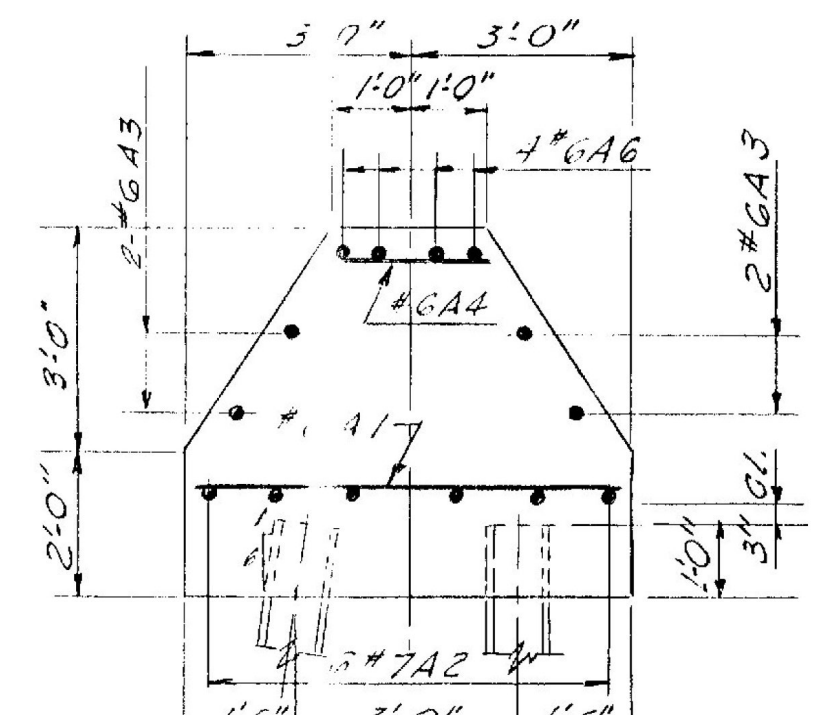
SECTION E-E
SCALE: 3/8" = 1'-0"



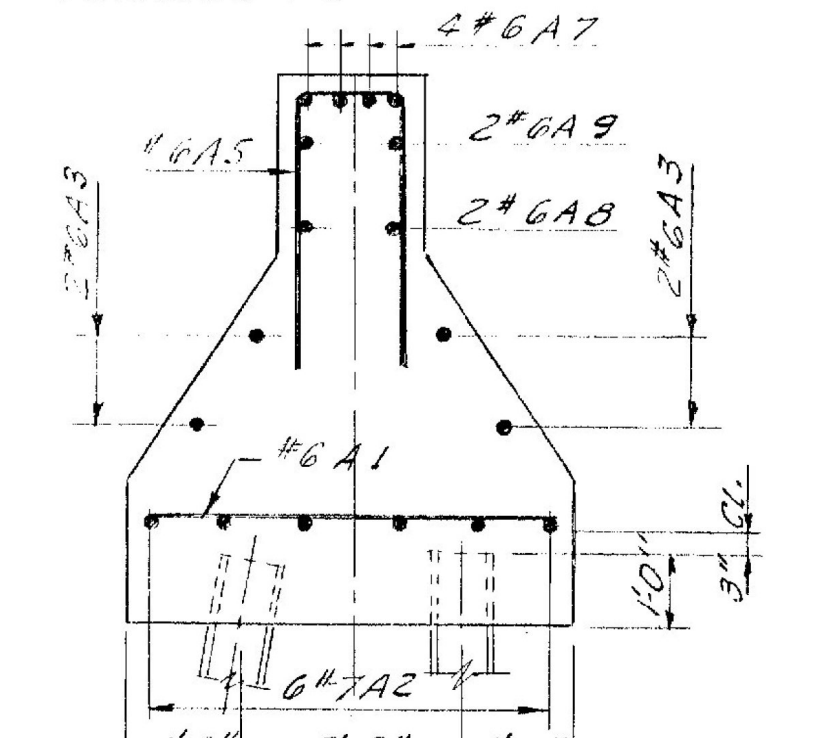
ELEVATION A-A
WEST ABUTMENT AS SHOWN
EAST ABUTMENT OPP HAND
SCALE: 1/4" = 1'-0"



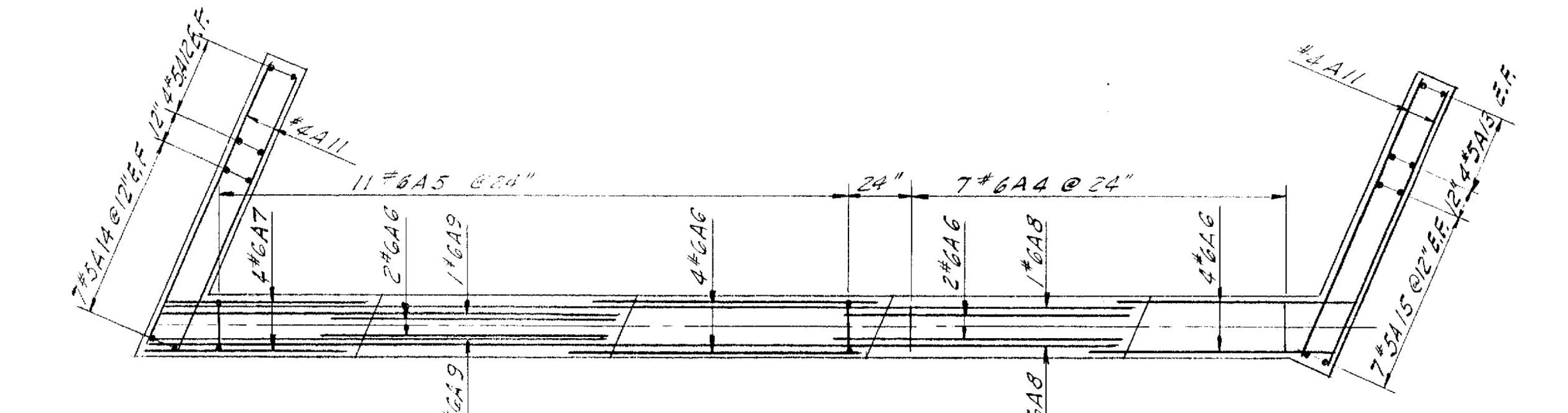
SECTION B-B
SCALE: 3/8" = 1'-0"



SECTION C-C
SCALE: 3/8" = 1'-0"



SECTION D-D
SCALE: 3/8" = 1'-0"



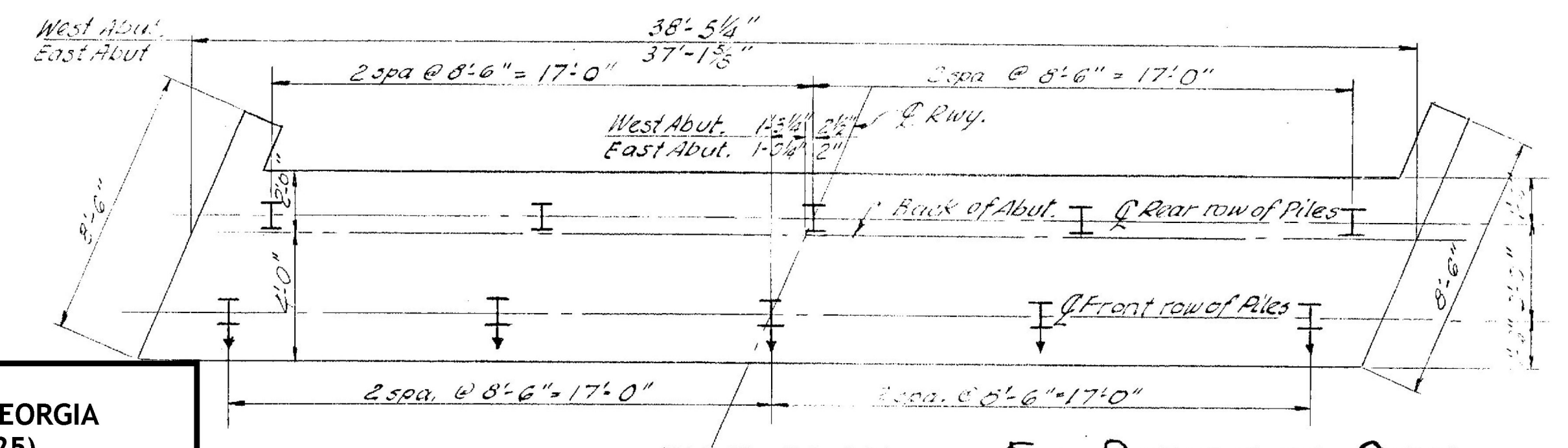
TOP REINFORCING PLAN
SCALE: 1/4" = 1'-0"

ELEV.	WEST ABUTMENT		EAST ABUTMENT	
	LEFT PYLON	RIGHT PYLON	LEFT PYLON	RIGHT PYLON
A	323.02	324.52	322.90	324.20
B	322.99	324.50	322.86	324.15
C	322.72	324.24	322.59	323.87
D	322.44	323.97	322.31	323.59
F	314.54	316.04	314.38	315.70
G	309.54	309.54	309.38	309.38

NOTES:

- For General Notes see Sh. # BR-1
- For additional details see Sh. S.18-20-60
- For pile splice detail see Sh. # S.13-20-60
- Left and Right are determined by looking toward increasing stations.

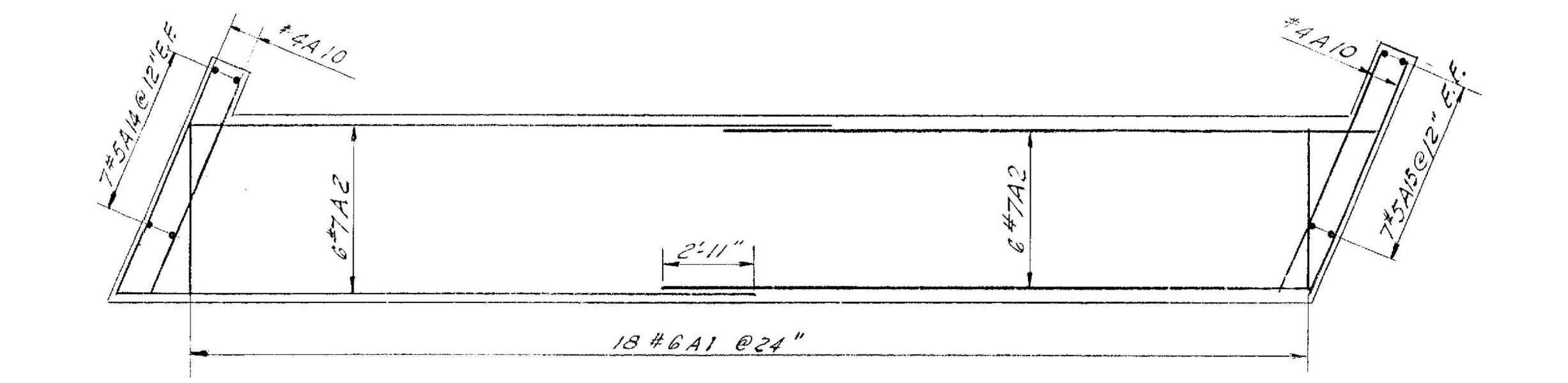
**WILLISTON - GEORGIA
IM MEMB (25)
SHEET 27 OF 38
BRIDGE 67
FOR REFERENCE ONLY**



PILE PLAN
SCALE: 1/4" = 1'-0"

FOR REFERENCE ONLY

5 Piles battered 6:1 each Abut.
5 Piles vertical each Abut.
10 Piles Total each Abut.
Estimated avg Pile length West abut. 55
East abut. 65



BOTTOM REINFORCING PLAN
SCALE: 1/4" = 1'-0"

FINAL		ESTIMATED QUANTITIES								
WEST ABUT.	EAST ABUT.	ITEM #	ITEM	UNIT	WEST ABUTMENT NEAT	WEST ABUTMENT OVERRUN	WEST ABUTMENT TOTAL	EAST ABUTMENT NEAT	EAST ABUTMENT OVERRUN	EAST ABUTMENT TOTAL
0	0	107	Structure Excavation	C.Y.	72	—	72	72	—	72
0	0	222	Gravel Backfill	C.Y.	76	—	76	76	—	76
46	44	401-B	Concrete Class B Mod.	C.Y.	428	22	450	450	22	472
—	—	402	Reinforcing Steel	Lb	—	—	—	—	—	—
5	4	407	Asphaltic - Asbestos Coating	S.Y.	41	—	41	4	—	4
1	0	503	Splices for Steel Piling	Pa.	7	—	7	—	—	7
536	580	504	Steel H Piling (128 P 53)	L.F.	550	—	550	580	—	580

STATE OF VERMONT
DEPARTMENT OF HIGHWAYS

INTERSTATE PROJECT IN THE TOWN OF
SOUTH BURLINGTON

UNDERPASS STA. 2036+03.31
SHELburne INTERCHANGE W.B.
ABUTMENT DETAILS

BOSWELL ENGINEERING CO. RIDGEFIELD PARK, N.J.

DRAWN BY A.M. IN CHARGE A.J.I. SCALE AS SHOWN
CHECKED BY A.J.I. DATE

PROJECT NO. I 89-3(14) SHEET 173 OF 195