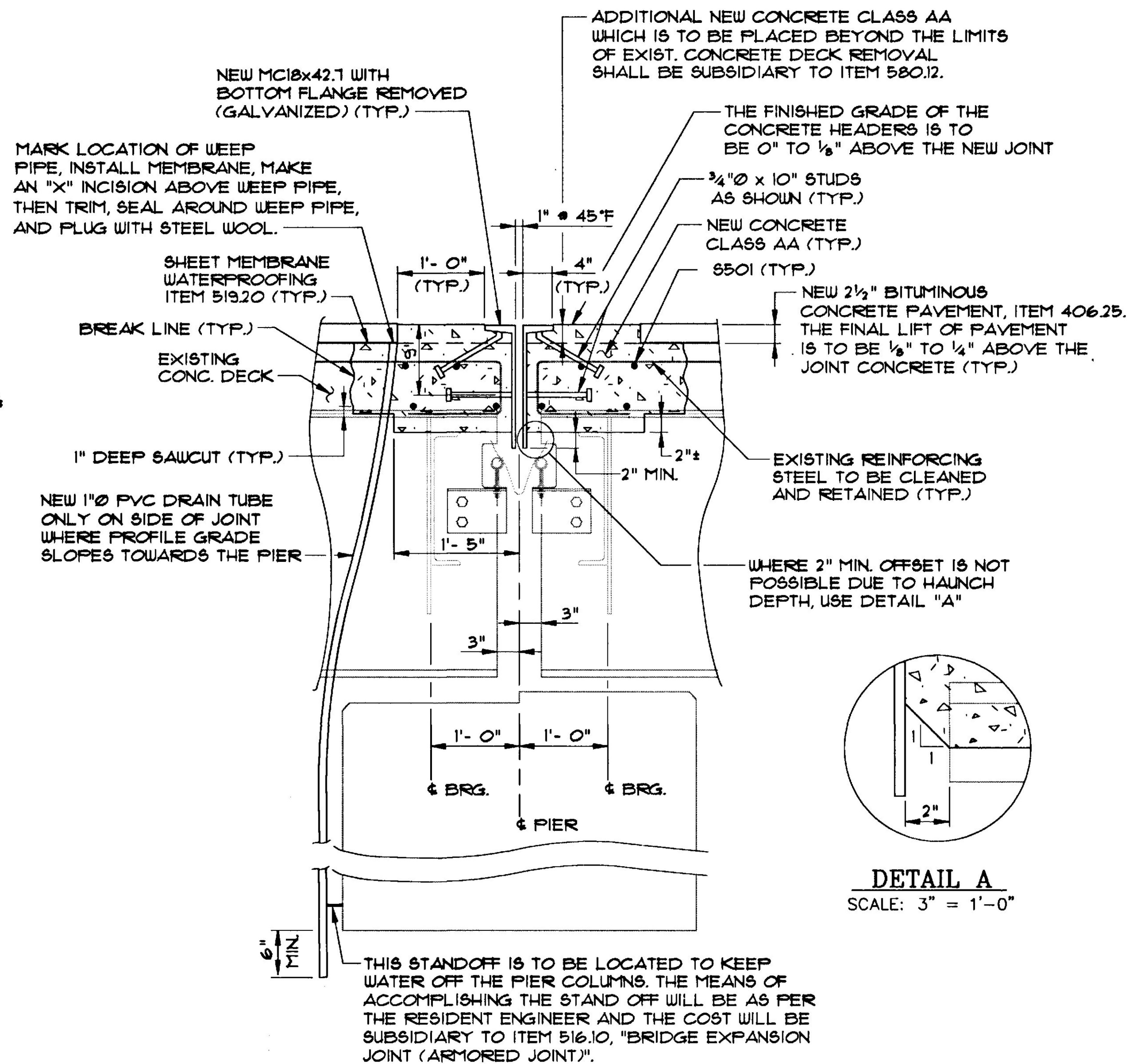
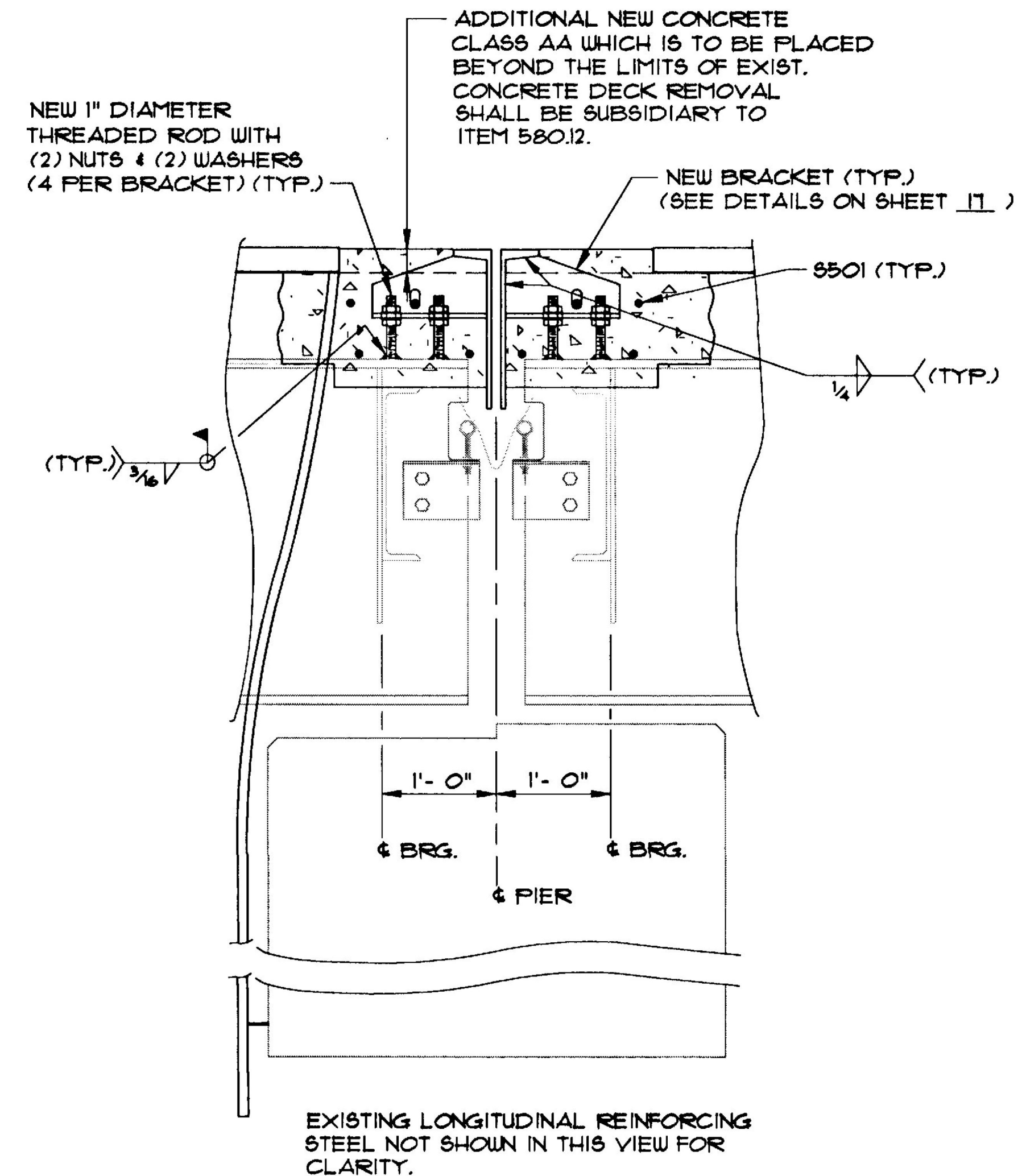


**SECTION OF  
EXISTING EXPANSION JOINT AT PIER**  
SCALE: 1" = 1'-0"



**NEW EXPANSION JOINT AT PIER  
SECTION BETWEEN BEAMS**  
SCALE: 1" = 1'-0"



**NEW EXPANSION JOINT AT PIER  
SECTION AT BEAMS**  
SCALE: 1" = 1'-0"

**NOTES:**

- EXISTING CONCRETE AND RELATED JOINT HARDWARE WILL BE REMOVED BACK TO THE BREAK LINE AS SHOWN AND WILL BE PAID FOR UNDER ITEM 580.12, "REPAIR OF CONCRETE SUPERSTRUCTURE SURFACE, CLASS II".
- SEE SHEET 16 FOR NOTES AND ADDITIONAL DETAILS.

WILLISTON - GEORGIA  
IM MEMB(25)  
SHEET 21 OF 38  
BRIDGE 67  
FOR REFERENCE ONLY

VANASSE HANGEN BRUSTLIN, INC.

**STATE OF VERMONT  
AGENCY OF TRANSPORTATION**

Town Of	SOUTH BURLINGTON	Bridge No.	
		Log Sta.	
Highway No.	I-189 & I-89	Surv. Sta.	
<b>PIER EXPANSION JOINT REPAIR SECTIONS (ARMORED JOINT)</b>			
Designed By	T.S. BRYANT	Drawn By	B.J. MASSE
Checked By	Date	Bridge Design Supervisor	
J.P. HALSTEAD	1/94	J.P. HALSTEAD	Date 1/94
PROJECT	SOUTH BURLINGTON	PROJECT NO.	IR 189-3(13)MM DECK(30)
VHB Cad Drawing No.	50363846	Date	1-14-94
Bridge Sheet No.		Sheet	15 of 195