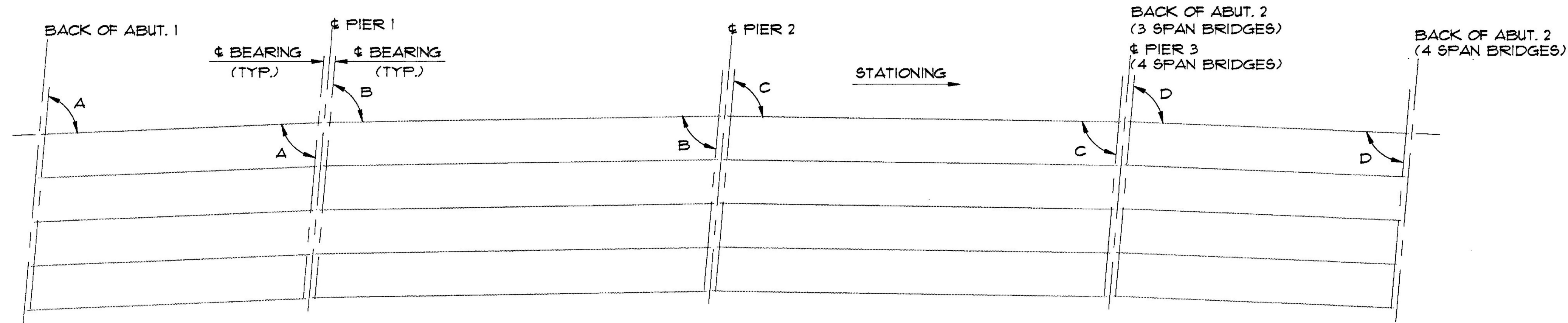
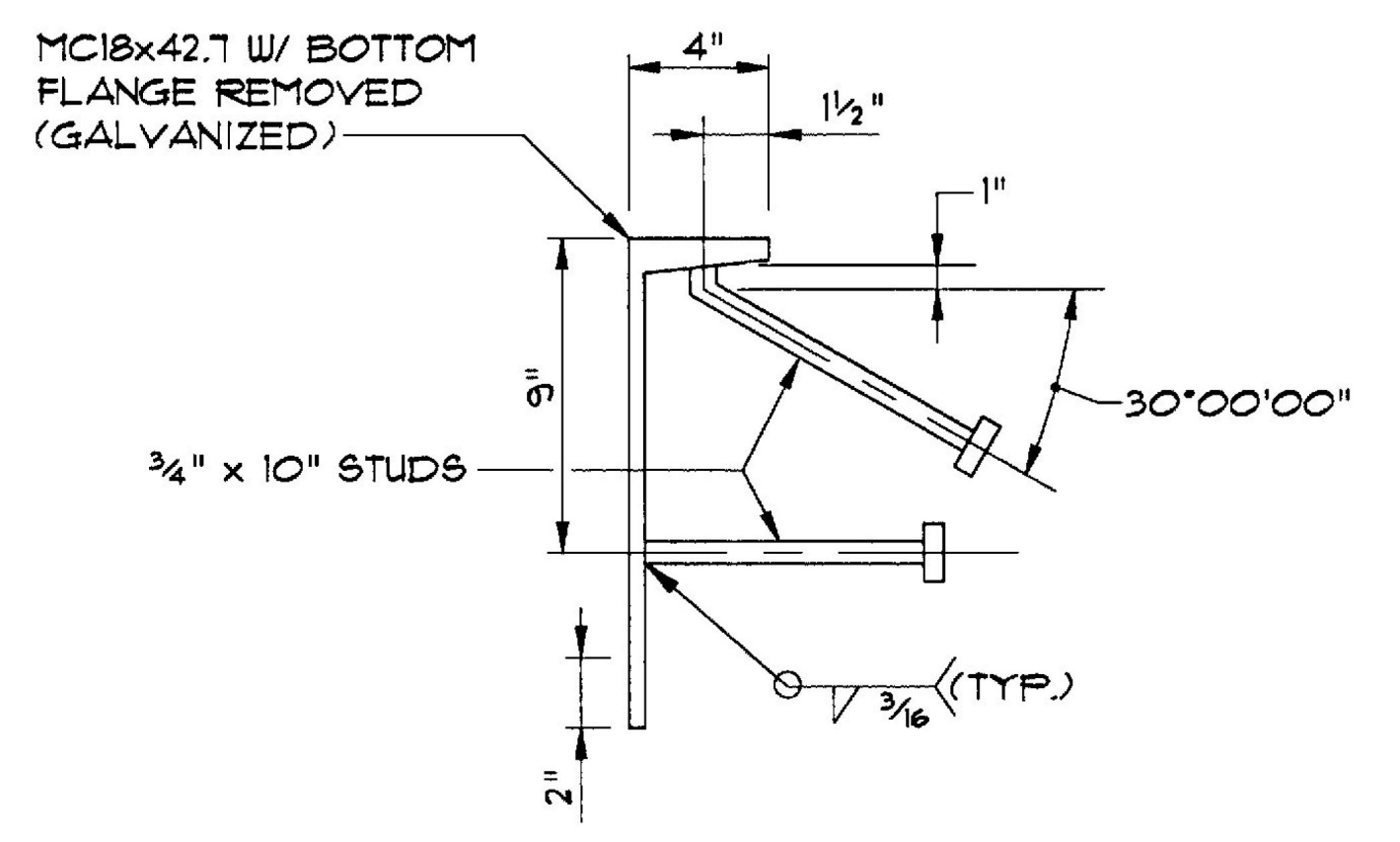


**NEW EXPANSION JOINT AT PIER**  
**PLAN VIEW**  
 SCALE: 3/4" = 1'-0"



**BEAM LAYOUT**  
 NTS



**STUD DETAIL**  
 NTS

**TABLE 1**  
**EXISTING GEOMETRIC INFORMATION**

BRIDGE NO.	PIER NO.	SPAN NO.	BEAM SPACING	NO. OF BEAMS	SKUEW ANGLE	CURB TO CURB WIDTH (FT.)	BANKING	LENGTH OF JOINT (FT.)
3E	1	1	7'-6"	6	A 95°00'00"	38'-0"	PARABOLIC	38'-13/4"
		2	7'-6"	6	B 95°00'00"	38'-0"	PARABOLIC	
3E	2	2	7'-6"	6	B 95°00'00"	38'-0"	PARABOLIC	38'-13/4"
		3	7'-6"	6	C 95°00'00"	38'-0"	PARABOLIC	
3W	1	1	7'-6"	6	A 84°07'12"	38'-0"	-11/16" / FT. RT.	38'-2 1/8"
		2	7'-6"	6	B 85°00'00"	38'-0"	-11/16" / FT. RT.	
3W	2	2	7'-6"	6	B 85°00'00"	38'-0"	-11/16" / FT. RT.	38'-2 1/8"
		3	7'-6"	6	C 84°07'12"	38'-0"	-11/16" / FT. RT.	
66N	1	1	7'-6"	5	A 88°18'37"	30'-0"	-13/16" / FT. RT.	30'-0 1/8"
		2	7'-6"	5	B 89°56'11"	30'-0"	-13/16" / FT. RT.	
66N	2	2	7'-6"	5	B 89°56'11"	30'-0"	-13/16" / FT. RT.	30'-0 1/8"
		3	7'-6"	5	C 91°37'35"	30'-0"	-13/16" / FT. RT.	
66S	1	1	7'-6"	5	A 88°21'50"	30'-0"	-13/16" / FT. RT.	30'-0 1/8"
		2	7'-6"	5	B 89°56'19"	30'-0"	-13/16" / FT. RT.	
66S	2	2	7'-6"	5	B 89°56'19"	30'-0"	-13/16" / FT. RT.	30'-0 1/8"
		3	7'-6"	5	C 91°34'29"	30'-0"	-13/16" / FT. RT.	

**TABLE 1 (CON'T.)**

BRIDGE NO.	PIER NO.	SPAN NO.	BEAM SPACING	NO. OF BEAMS	SKUEW ANGLE	CURB TO CURB WIDTH (FT.)	BANKING	LENGTH OF JOINT (FT.)
67	1	1	7'-6"	5	A 113°01'12"	30'-0"	-9/16" / FT. LT.	32'-5 3/8"
		2	7'-6"	5	B 111°44'24"	30'-0"	-9/16" / FT. LT.	
67	2	2	7'-6"	5	B 111°44'24"	30'-0"	-9/16" / FT. LT.	32'-1 5/8"
		3	7'-6"	5	C 110°12'36"	30'-0"	-9/16" / FT. LT.	
67	3	3	7'-6"	5	C 110°12'36"	30'-0"	-9/16" / FT. LT.	31'-10"
		4	7'-6"	5	D 108°49'48"	30'-0"	-9/16" / FT. LT.	
67E	1	1	7'-4"	4	A 76°00'00"	22'-0"	PARABOLIC	22'-8 1/8"
		2	7'-4"	4	B 76°00'00"	22'-0"	PARABOLIC	
67E	2	2	7'-4"	4	B 76°00'00"	22'-0"	PARABOLIC	22'-8 1/8"
		3	7'-4"	4	C 76°00'00"	22'-0"	PARABOLIC	
69	1	1	7'-6"	6	A 104°15'36"	30'-0"	-1/4" / FT. LT.	30'-10 1/8"
		2	7'-6"	6	B 103°35'42"	30'-0"	-1/4" / FT. LT.	
69	2	2	7'-6"	6	B 103°35'42"	30'-0"	-1/4" / FT. LT.	30'-9 3/4"
		3	7'-6"	6	C 102°48'18"	30'-0"	-1/4" / FT. LT.	
		4	7'-6"	6	D 102°11'24"	30'-0"	-1/4" / FT. LT.	
69	3	3	7'-6"	6	C 102°48'18"	30'-0"	-1/4" / FT. LT.	30'-8 3/4"
		4	7'-6"	6	D 102°11'24"	30'-0"	-1/4" / FT. LT.	

**NOTES:**

- FOR DETAILS OF PARABOLIC BANKING, SEE REFERENCE STANDARDS SCB-30-60, SCB-38-60, AND SCB-42-60, EXCEPT SEE EXISTING PLANS FOR BRIDGE NO. 67E.
- SEE SHEET 15 FOR TYPICAL PIER EXPANSION JOINT SECTIONS.

**WILLISTON - GEORGIA**  
**IM MEMB(25)**  
**SHEET 20 OF 38**  
**BRIDGE 67**  
**FOR REFERENCE ONLY**

**STATE OF VERMONT**  
**AGENCY OF TRANSPORTATION**

Town Of **SOUTH BURLINGTON** Bridge No. \_\_\_\_\_  
 Highway No. **I-189 & I-89** Log Sta. \_\_\_\_\_  
 Surv. Sta. \_\_\_\_\_

**PIER EXPANSION JOINT REPAIR PLAN**  
**(ARMORED JOINT)**

Designed By **B.J. MASSE** Date \_\_\_\_\_ Drawn By **B.J. MASSE**  
 Checked By **J.P. HALSTEAD** Date **1/94** Bridge Design Supervisor  
**J.P. HALSTEAD** Date **1/94**

PROJECT **SOUTH BURLINGTON** PROJECT NO. **IR 189-3(13)MM DECK(30)**  
 VHB Cad Drawing No. **50363557** Date **7-21-93**  
 Bridge Sheet No. \_\_\_\_\_ Sheet **14** of **195**