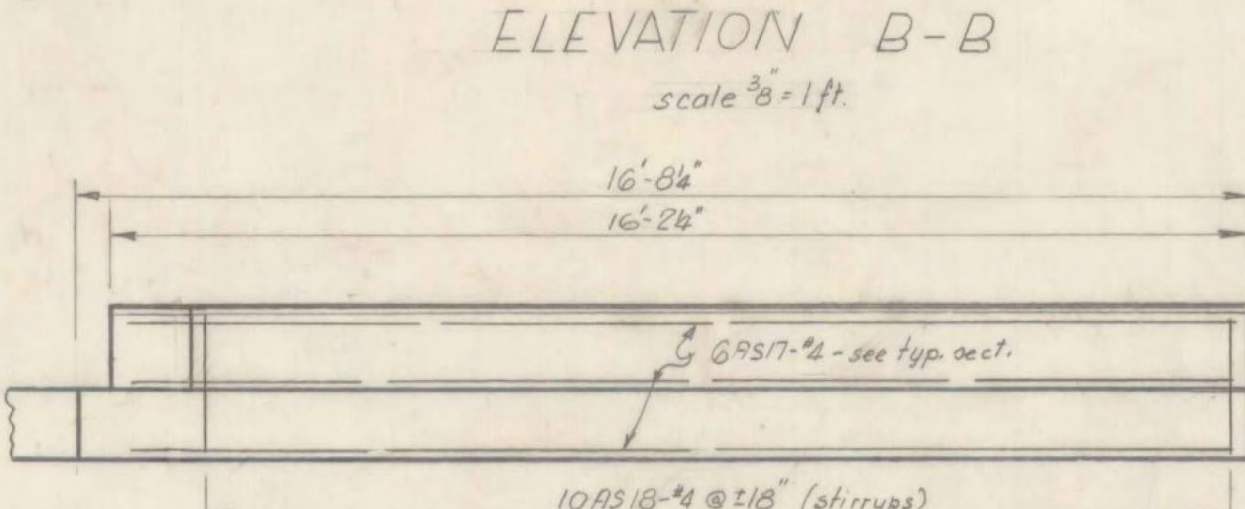
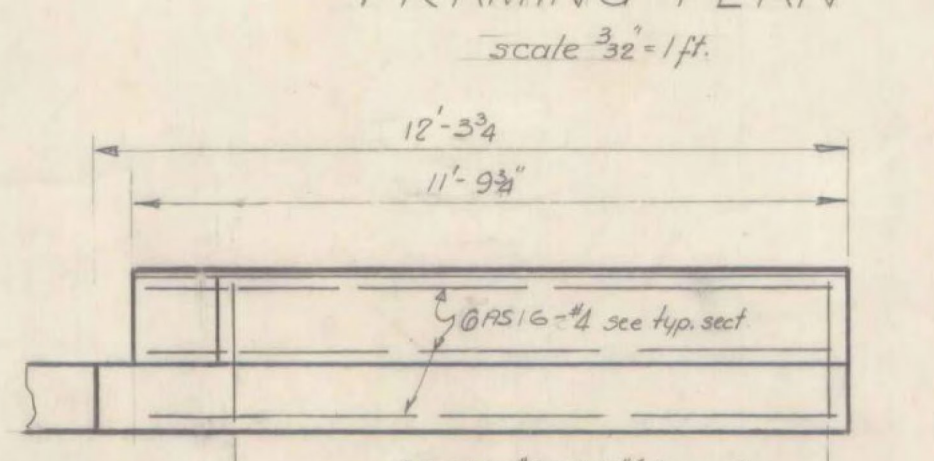
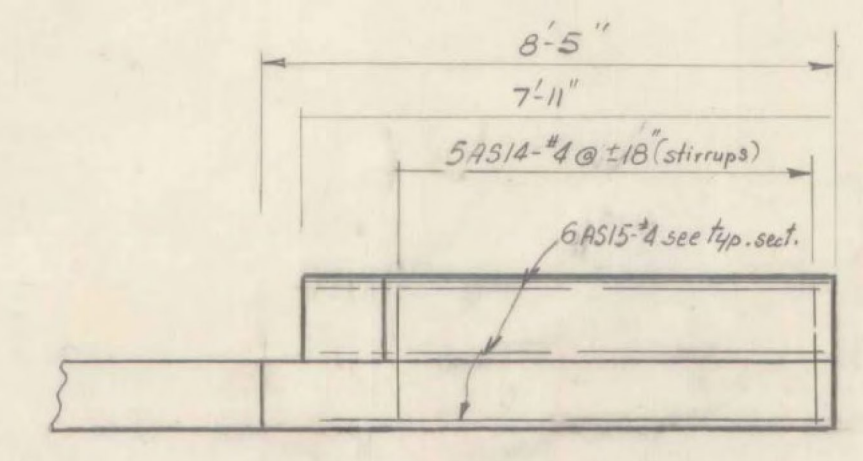
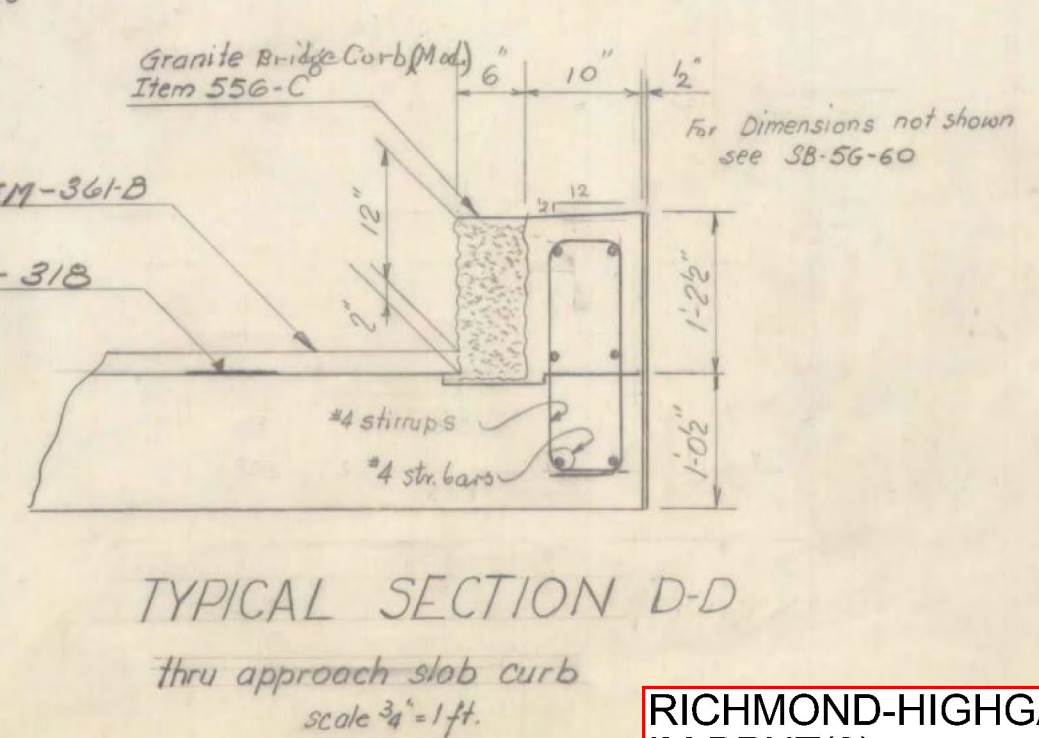
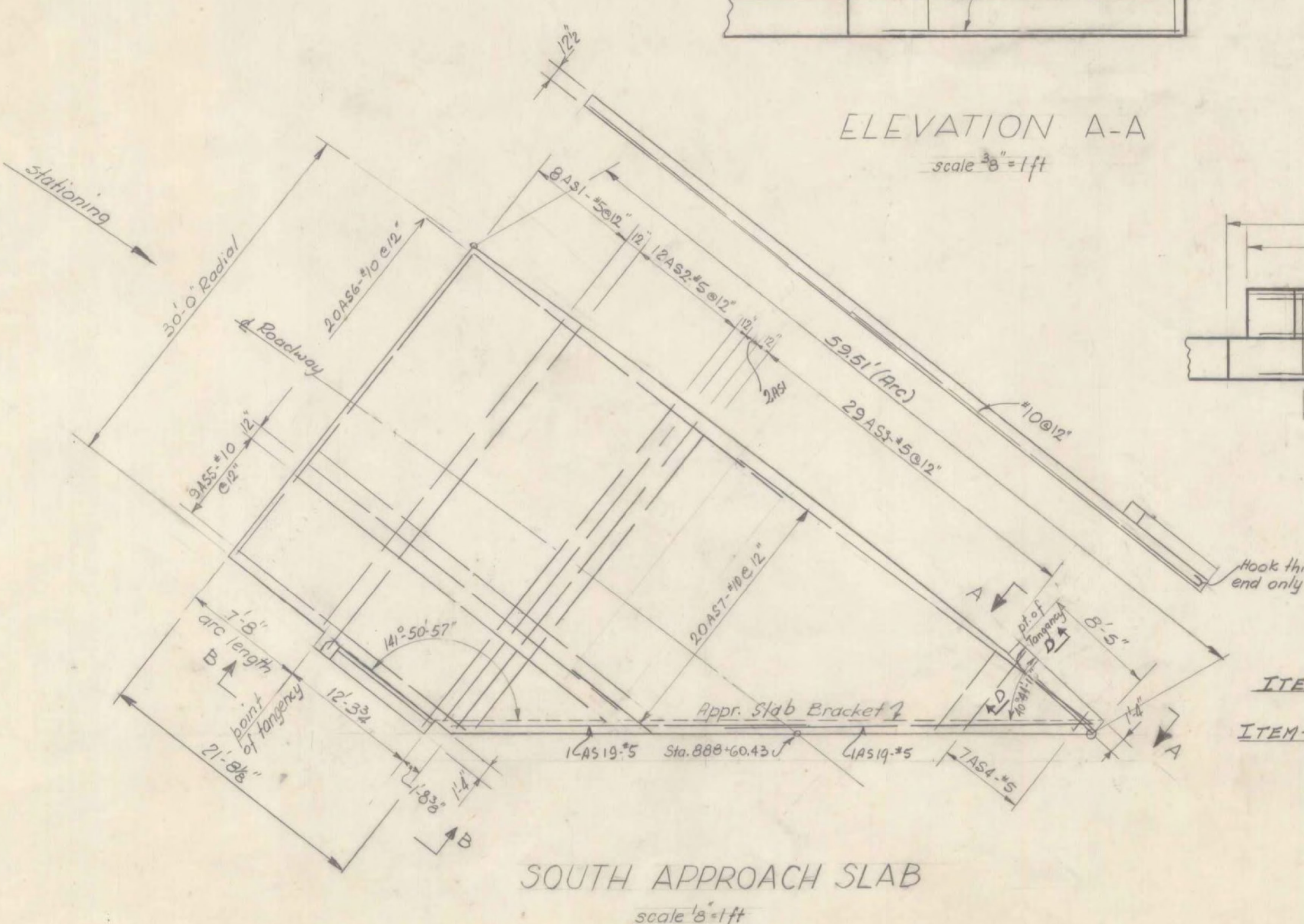
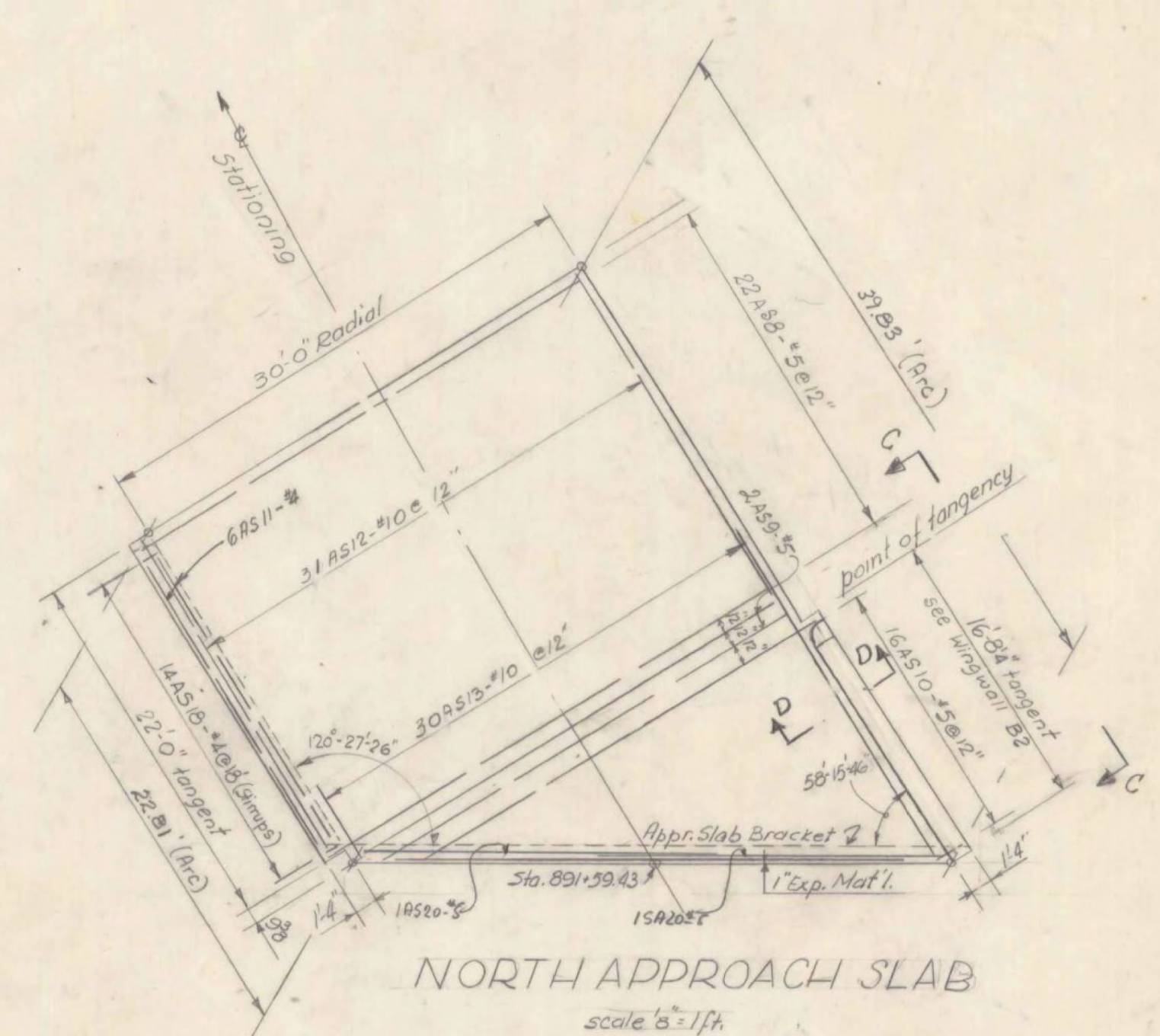


Beam spacing given is along & Pier or begin and end of bridge.
 Dimensions given along & of beam are to & of Pier or begin and end of bridge to & Pier.
 For bearing devices & diaphragms (Intermediate) see std. sh. 5B-20-60
 For scuppers, cover plates, spirals & Pier diaphragms see std. sh. 5C-B-D-60



Summary Item 401-B
 Conc. Class B Mod.

Location	Net (cu)
Span 1	91
Span 2	83
Span 3	32
Span 4	71
Span 5	46
So. Appr. Slab	14
No. Appr. Slab	39



Superstructure Quantities

ITEM NO.	ITEM	UNIT	NET	OVERRUN	TOTAL	FINAL
106-A	CHAN. EXCAV. OF EARTH	C. Y.				AB
106-B	CHAN. EXCAV. OF ROCK	C. Y.				
106-C	UNCLASS. CHAN. EXCAV.	C. Y.				
107	STRUCT. EXCAV.	C. Y.				
401-B	CONC. CLASS B (MOD.)	C. Y.	406			450
402	REINF. STEEL	LBS.		see reinf. schedule		
407	ASPHALTIC-ASB. COATING	S. Y.				
502-B	TREATED TIMBER PILING	L. F.				
503	SPLICES FOR STEEL PILING	EA.				
504	STEEL PILING	L. F.				
572	Bridge Rolling	L. F.	622 V			622
404A	Structural Steel	LB.	367000			36691
556C	Granite Br. Curb (Mod) Superstructure	L. F.	879			605
556C	" " " " Approach Slab	L. F.	34			34
318	Tar Emulsion for Bridge Floors	GAL.	496			496
34B	Bitum. Concr. Pavement (Mod)	Ton	136			
403	Spiral Reinf. (6830*)	L.S.	1 V			1

STATE OF VERMONT
 DEPARTMENT OF HIGHWAYS

TOWN OF SWANTON-HIGHGATE

ROUTE NO. I-89 LOG STA. 890+18.98

FRAMING PLAN & APPROACH

SLABS - U.S.*7 OVER INTERSTATE

SCALE as noted

SURVEYED BY WEBSTER-MARTIN INC.

DRAWN BY RWK CHECKED BY E.E.P.

PROJECT NO. I-89-3(1)

SHEET 86 OF 143 Contract 3

BR32

RICHMOND-HIGHGATE
 IM BPNT(9)
 SHEET 30 OF 30
 BRIDGE 101
 FOR INFORMATION ONLY