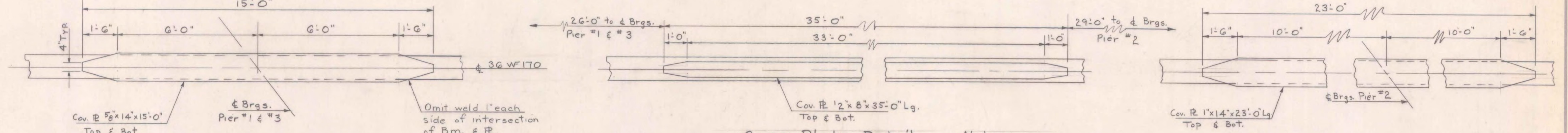
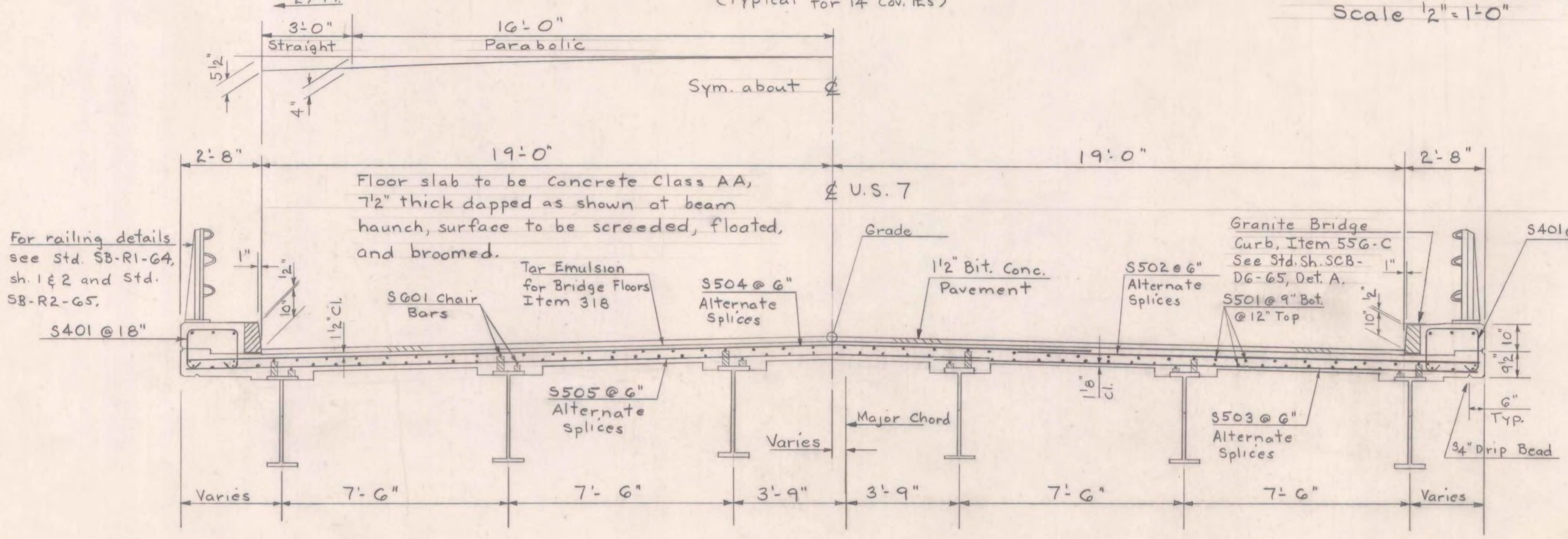


Framing Plan
Scale 3/32" = 1'-0"



Cover Plate Details
Scale 1/2" = 1'-0"

- Notes:
- For General Notes see Std. Sh. SCB-D1-G5.
 - For Fixed Brg. details see Std. Sh. SCB-D8-G5, Det. A; and Std. Sh. SCB-D9-G5, Det. A and BR-209.
 - For curtainwall details at Fixed abut. see Std. Sh. SCB-D2-G5, Det. A.
 - For exp. brg. details see sheet BR-208.
 - All diaphragms to be 18W42.7, see sheet BR-209.
 - All cover plate welds to be 5/16" fillet
- 6 (cont.) welds and shall be continuous shop welds.
7. For details of beam haunch see sheet BR-209.



Typical Section
Scale 3/8" = 1'-0"

ITEM NO.	ITEM	UNIT	NET	TOTAL	FINAL
	CHAN. EXCAV. OF EARTH	C.Y.			
	CHAN. EXCAV. OF ROCK	C.Y.			
	UNCLASS. CHAN. EXCAV.	C.Y.			
	STRUCT. EXCAV.	C.Y.			
	CONC. CLASS AA (MOD.)	C.Y.			
	CONC. CLASS B (MOD.)	C.Y.			
	REINF. STEEL	LBS.			
	ASPHALTIC-ASB. COATING	S.Y.			
	TREATED TIMBER PILING	L.F.			
	SPLICERS FOR STEEL PILING	EA.			
	STEEL PILING	L.F.			
	UNTREATED TIMBER PILING	L.F.			

RICHMOND-HIGHGATE
IM BPNT(9)
SHEET 20 OF 30
BRIDGE 85
FOR INFORMATION ONLY

STATE OF VERMONT
DEPARTMENT OF HIGHWAYS

TOWN OF Milton-Georgia

ROUTE No. I 89 LOG STA.

Framing Plan & Typical Section

U.S. 7 over I 89

SCALE As Noted

SURVEYED BY

DRAWN BY A.J.C. CHECKED BY J.J.C.

PROJECT No. I 89-3(39)

SHEET 20 OF 278