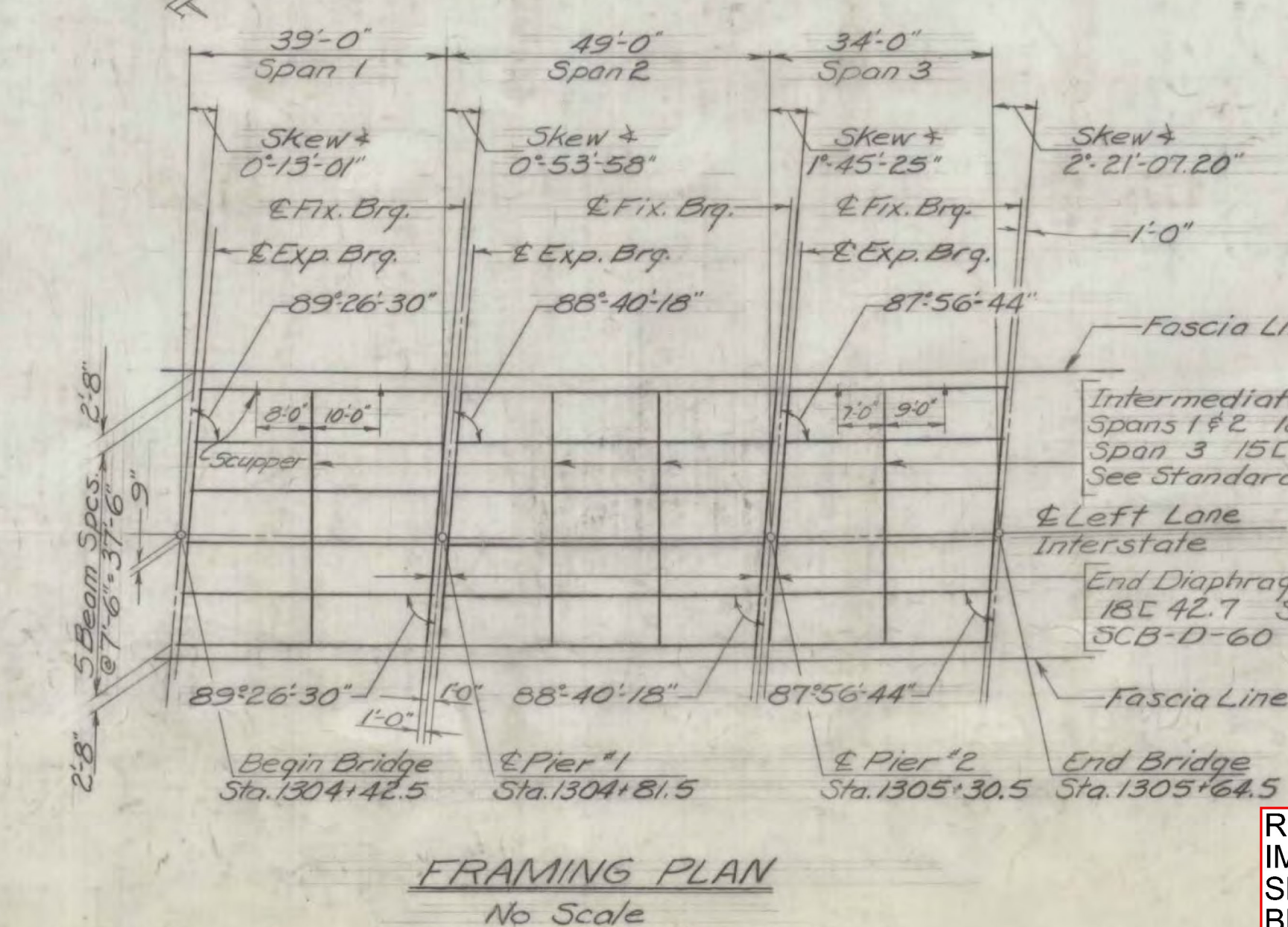
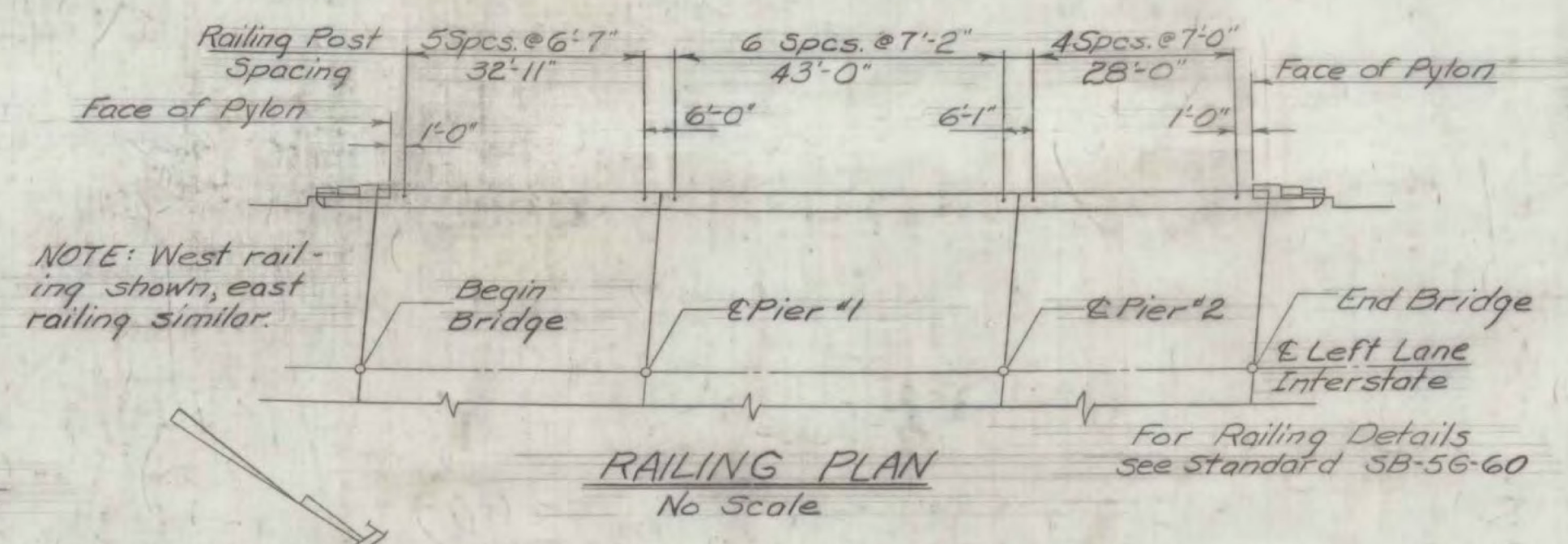
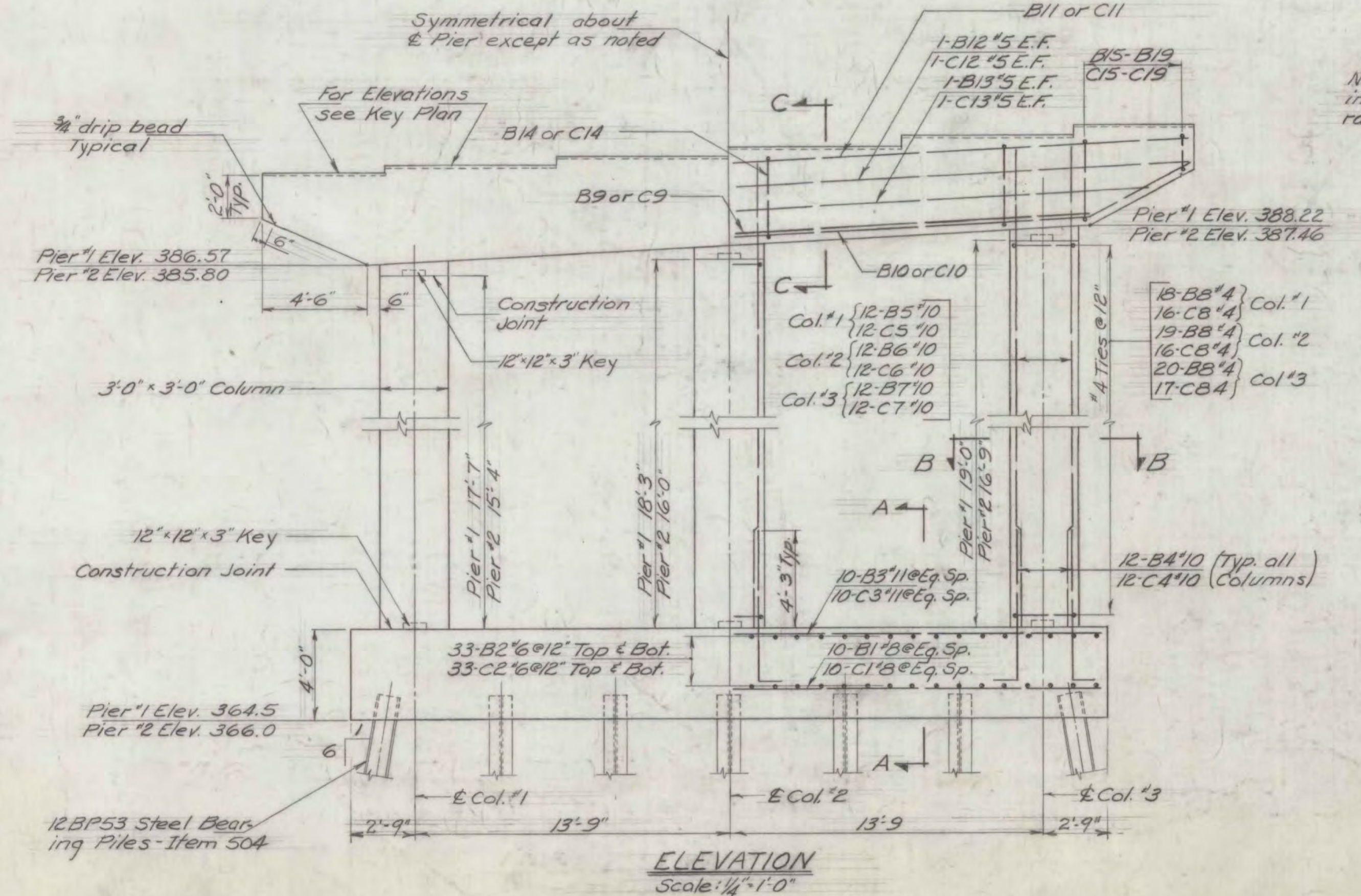
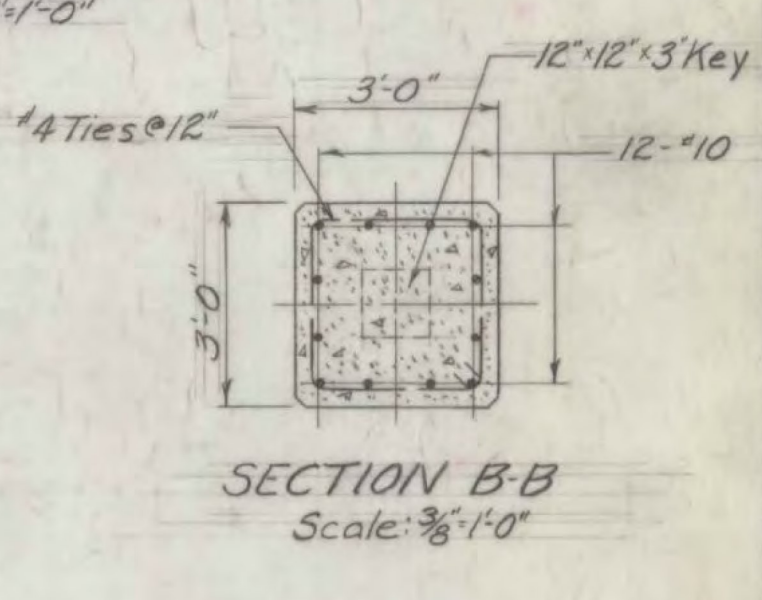
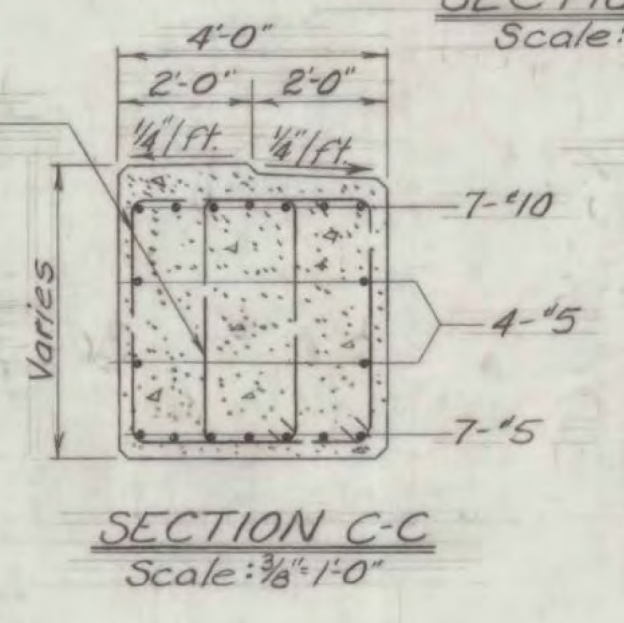
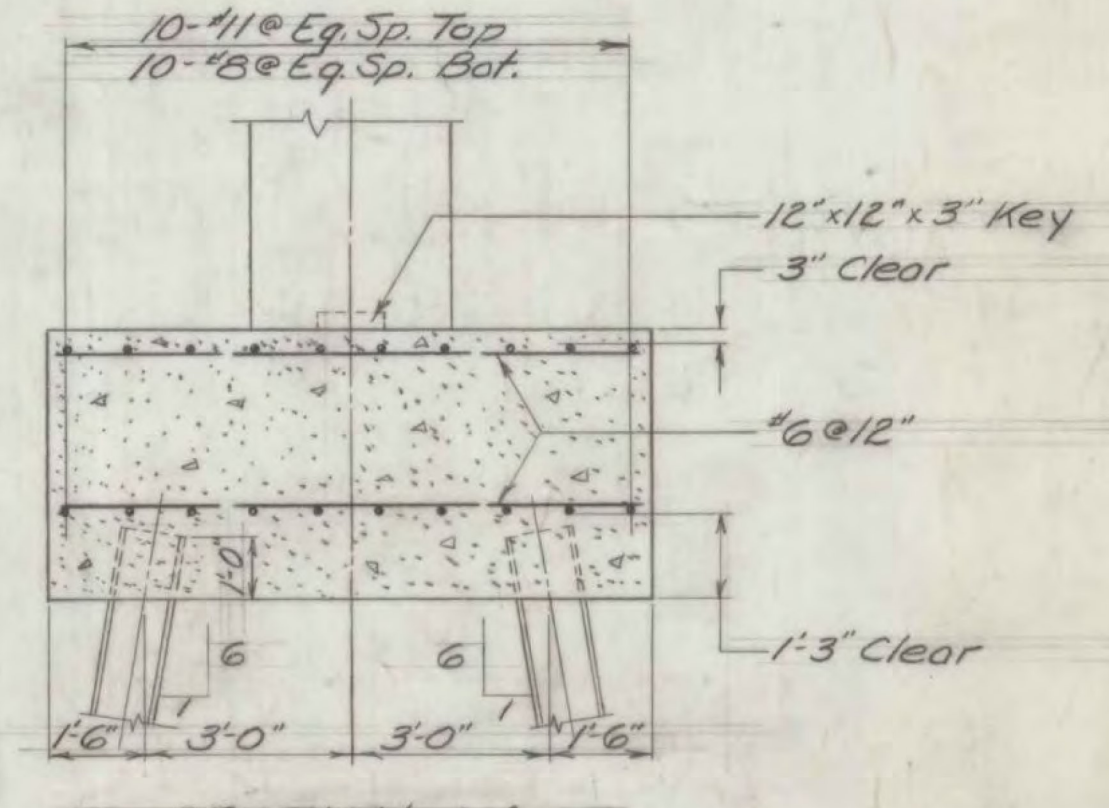
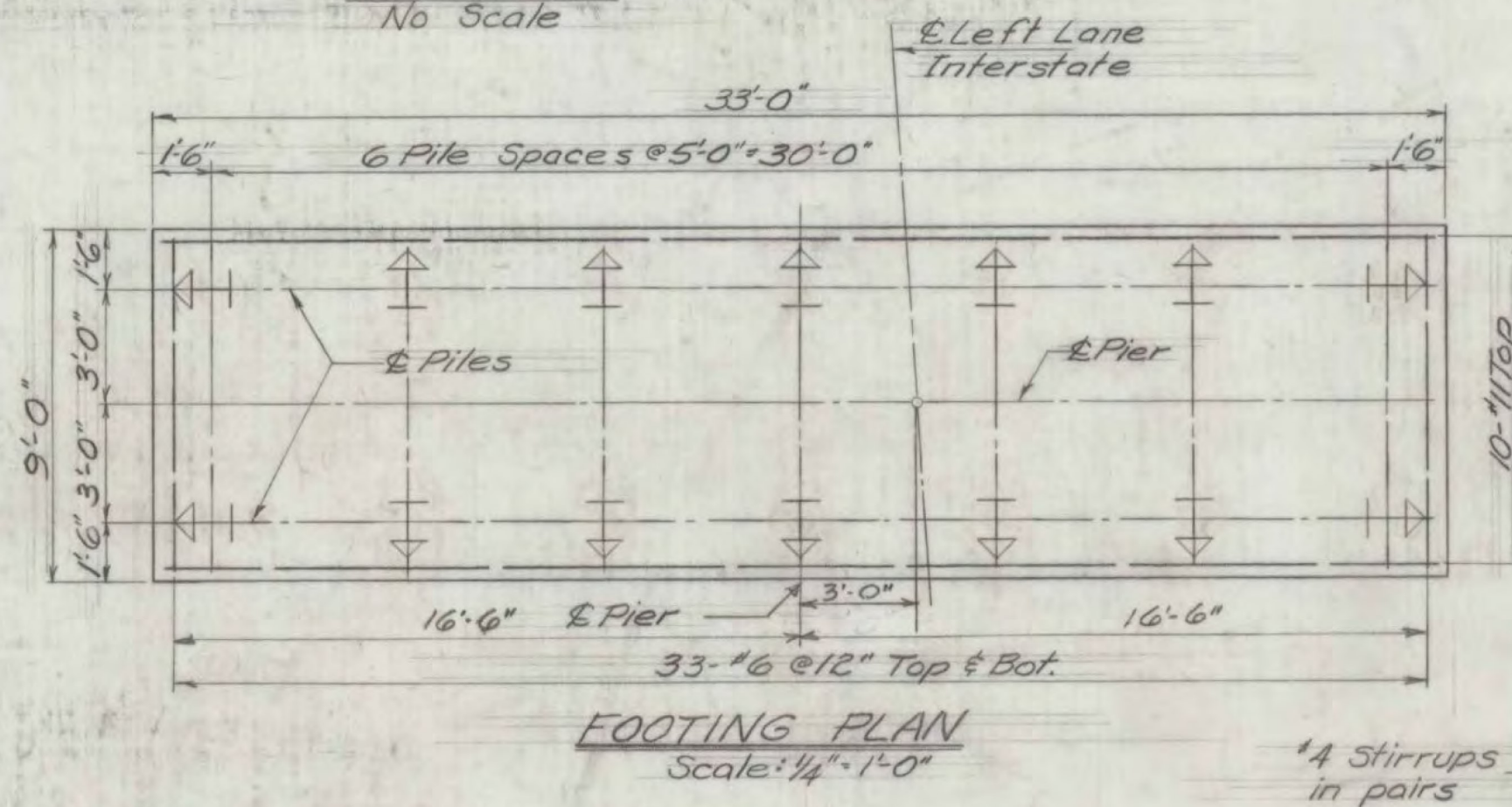
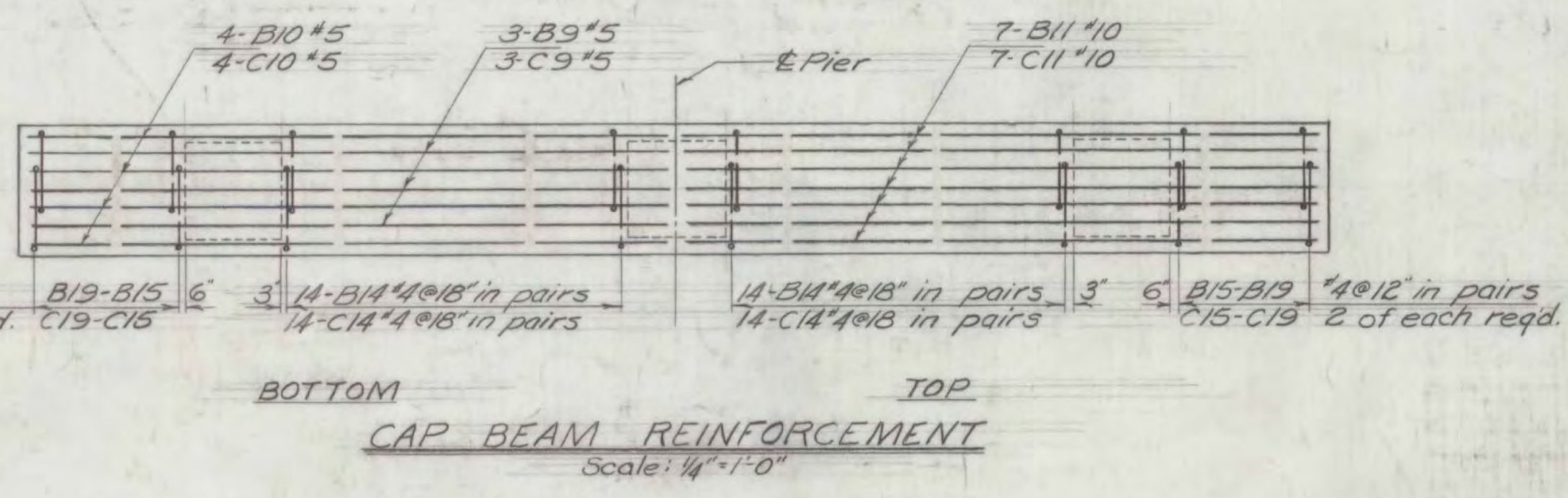


ESTIMATED QUANTITIES				
ITEM NO	ITEM	PIER NO	TOTAL	FINAL
107	Structure Excavation (cubic yards)	1	14	14
		2	14	14
401B	Concrete Class B, Mod (cubic yards)	1	86	87
		2	85	85
407	Asphaltic-Asbestos Coating (square yards)	1	17	18
		2	17	18
503	Splices for Steel Piling (each)	1	3	0
		2	3	0
504	Steel Piling (linear feet)	1	280	253
		2	350	397



- NOTES**
- For General Notes see Bridge Sheet 1.
  - Pier caps to be sloped 1/4"ft and coated with Asphaltic-Asbestos Coating, Item 407, (1/2" thick) after Superstructure is in place.
  - For design purposes the maximum pile load does not exceed 37 tons.
  - For reinforcing bar schedule see Bridge Sheet 15.
  - Pier #1 reinforcing bar marks begin with letter 'B'. Pier #2 reinforcing bar marks begin with letter 'C'.
  - The length and spacing of diaphragms shall be the responsibility of the fabricator.
  - Estimated length of piles: Pier #1 = 20', Pier #2 = 25'

RICHMOND-HIGHGATE  
IM BPNT(9)  
SHEET 12 OF 30  
BRIDGE 52S  
FOR INFORMATION ONLY

VERMONT  
STATE HIGHWAY DEPARTMENT  
TOWNS OF BOLTON - RICHMOND  
INTERSTATE ROUTE 89  
INTERSTATE BRIDGE OVER  
WEST BOLTON TOWN HIGHWAY  
PIERS, FRAMING PLAN,  
& RAILING PLAN - LEFT LANE

MCFARLAND - JOHNSON  
CONSULTING ENGINEERS  
BINCHAMTON, NEW YORK

DESIGNED: H.B. CHECKED: L.H.S. DATE: 7-25-61  
DRAWN: D.A.S. IN CHARGE: H.G.C. SCALE: AS SHOWN

PROJECT NO. I 89-2(8) SH 98 OF 328