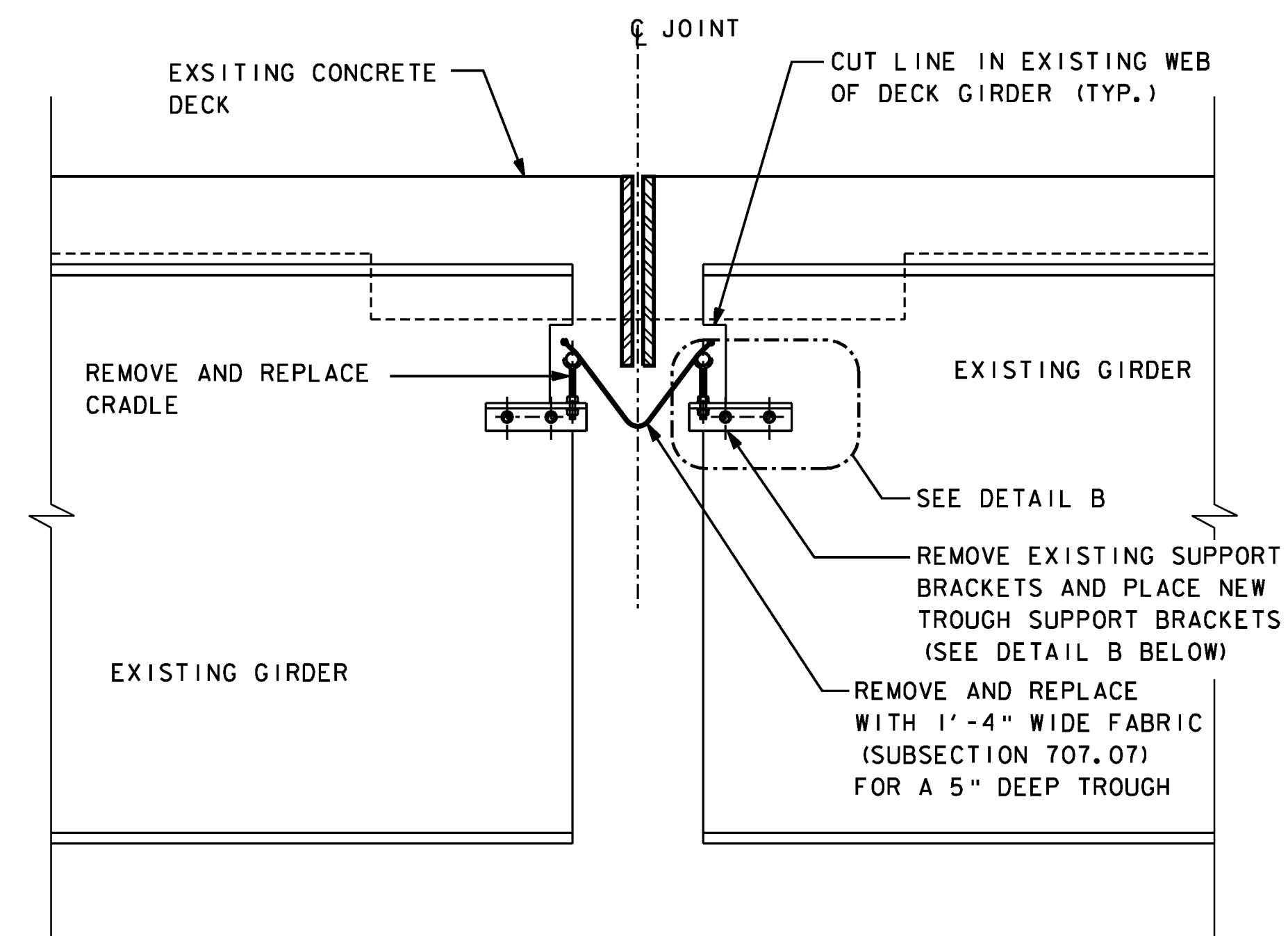
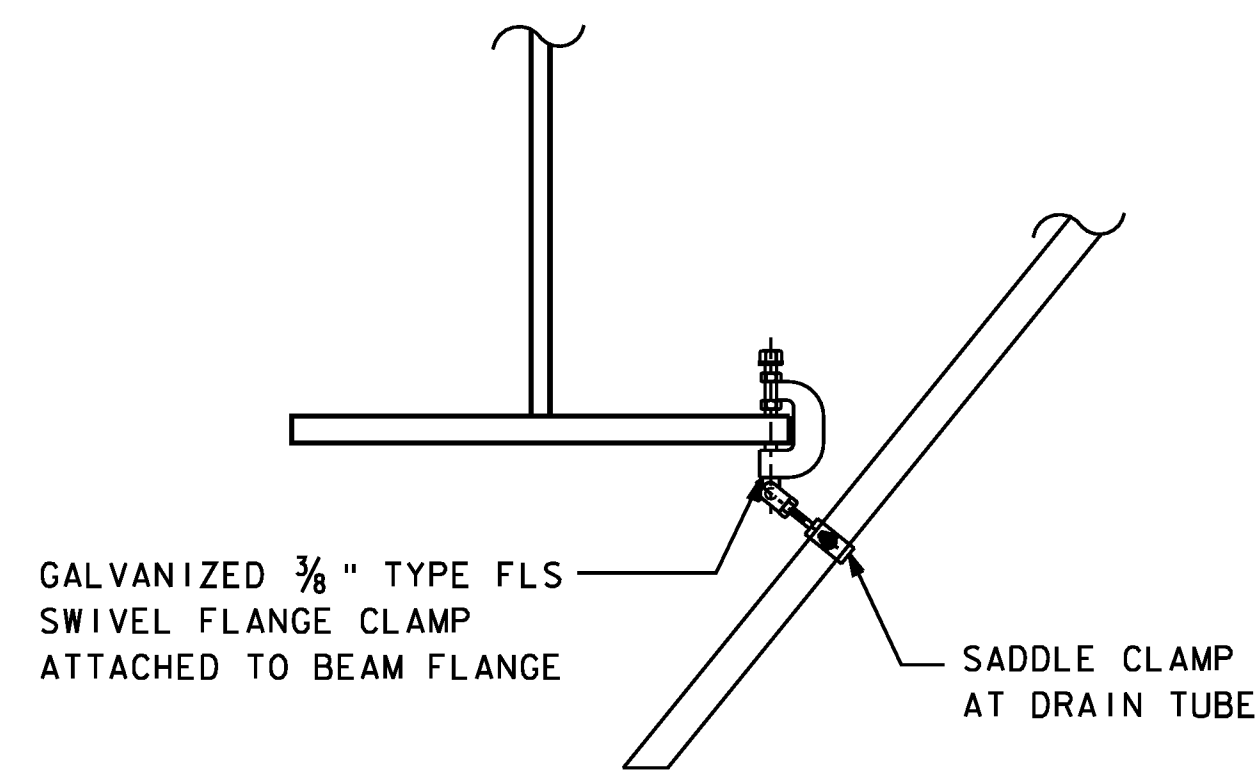


DRAIN TUBE EXTENSION DETAIL
NOT TO SCALE



TYPICAL SECTION AT EXISTING DIAPER DRAIN
SCALE: 1" = 1'-0"



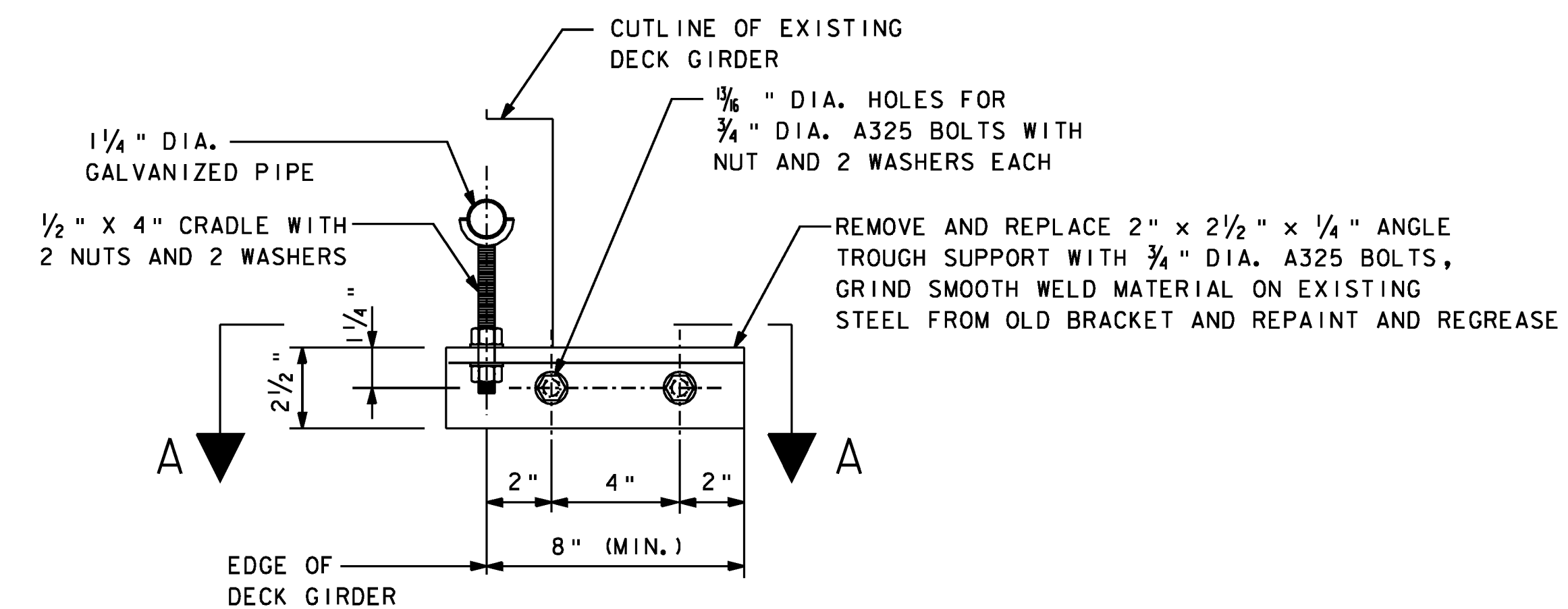
DETAIL A
NOT TO SCALE

NOTES:

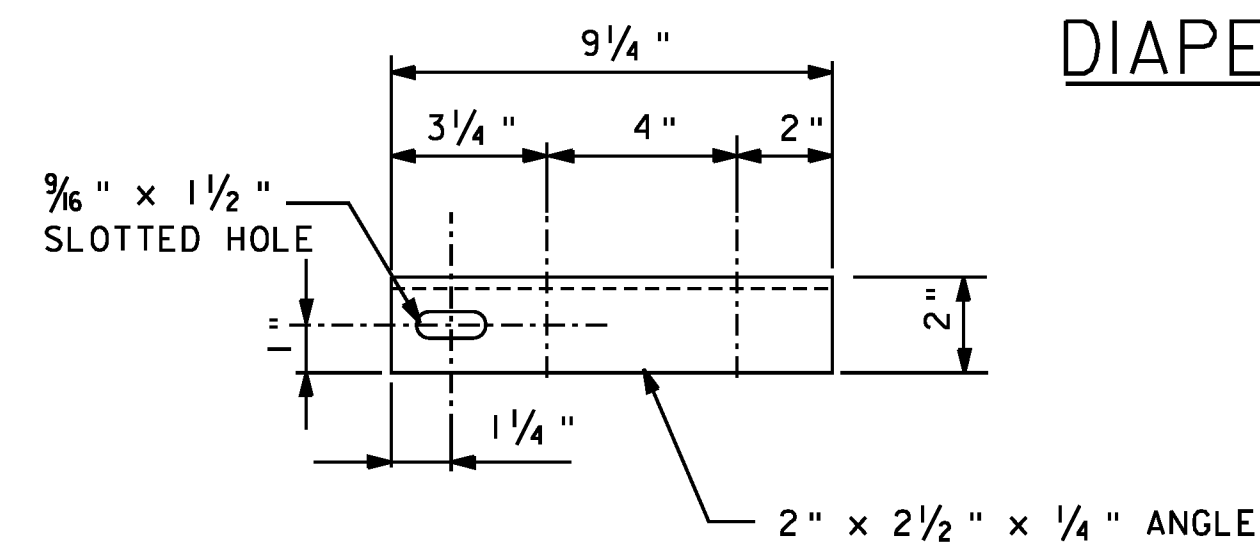
- IF EXISTING DRAIN TUBE IS TOO SHORT TO PROVIDE ADEQUATE CONNECTION, THE CONTRACTOR SHALL COMPLETELY FILL THE TUBE WITH POLYURETHANE SEALANT CONFORMING TO SUBSECTION 707.05. TUBES TO BE FILLED WITH POLYURETHANE SEALANT SHALL BE APPROVED BY THE ENGINEER PRIOR TO BEING FILLED.

DIAPER DRAIN REPAIR NOTES:

- TROUGH SUPPORT BRACKETS SHALL NOT BE WELDED TO GIRDER WEB.
- STRUCTURAL STEEL TUBING SHALL CONFORM TO ASTM-500 OR ASTM-501 AND SHALL BE GALVANIZED IN ACCORDANCE WITH ASTM A-123 AFTER FABRICATION. ALL PLATES, CRADLES, BARS AND ANGLES SHALL CONFORM TO ASTM A-36 AND SHALL ALSO BE GALVANIZED IN ACCORDANCE WITH ASTM-123 AFTER FABRICATION.
- THE 1/4" (NOMINAL DIAMETER) GALVANIZED STEEL PIPE, PREFORMED FABRIC MATERIAL, CRADLES AND RELATED HARDWARE, TAP SCREWS, CUTTING OF THE EXISTING STRUCTURAL STEEL AS REQUIRED, REMOVAL AND DISPOSAL OF THE EXISTING DRAIN TROUGH SYSTEM AND FLUSHING OF ALL PIER CAPS SHALL BE PAID UNDER ITEM 506.75, STRUCTURAL STEEL.
- THESE DETAILS ARE ILLUSTRATED AS AN EXAMPLE. CONTRACTOR TO SUBMIT SHOP DRAWINGS FOR APPROVAL.



DETAIL B
3" = 1'-0"
DIAPER DRAIN REPAIR DETAILS



TROUGH SUPPORT BRACKET DETAIL A
PLAN VIEW
3" = 1'-0"

**PROJECT STANDARD
DETAILS**

PROJECT NAME: RICHMOND - HIGHGATE
PROJECT NUMBER: IM BPNT (9)

FILE NAME: I0a180/str/z10a180det.dgn
PROJECT LEADER: G.K.DONINGTON
DESIGNED BY: A.STOCKIN
PLOT DATE: 24-JAN-2012
DRAWN BY: W.GERHOLD
CHECKED BY: D.SARGENT
det2.dgn
SHEET 3 OF 30

