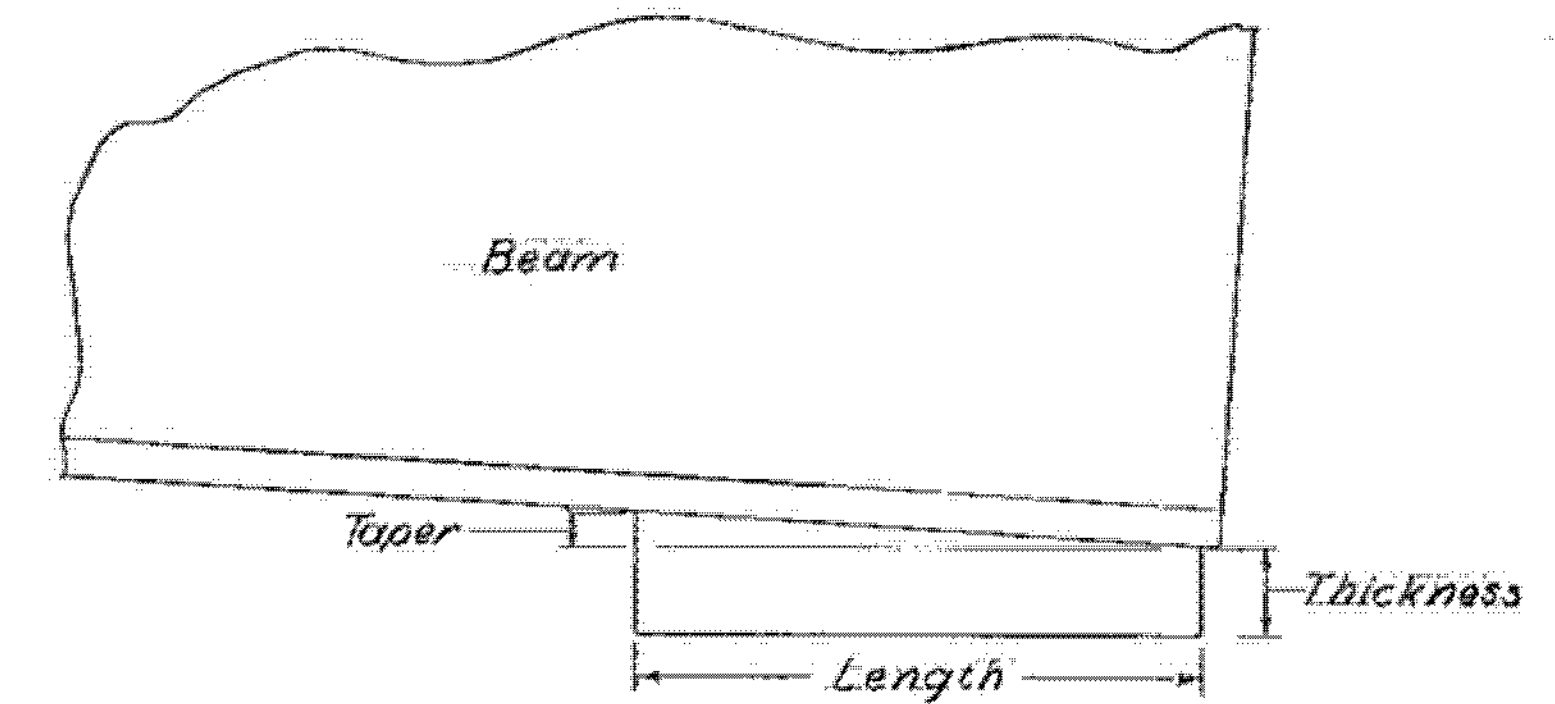
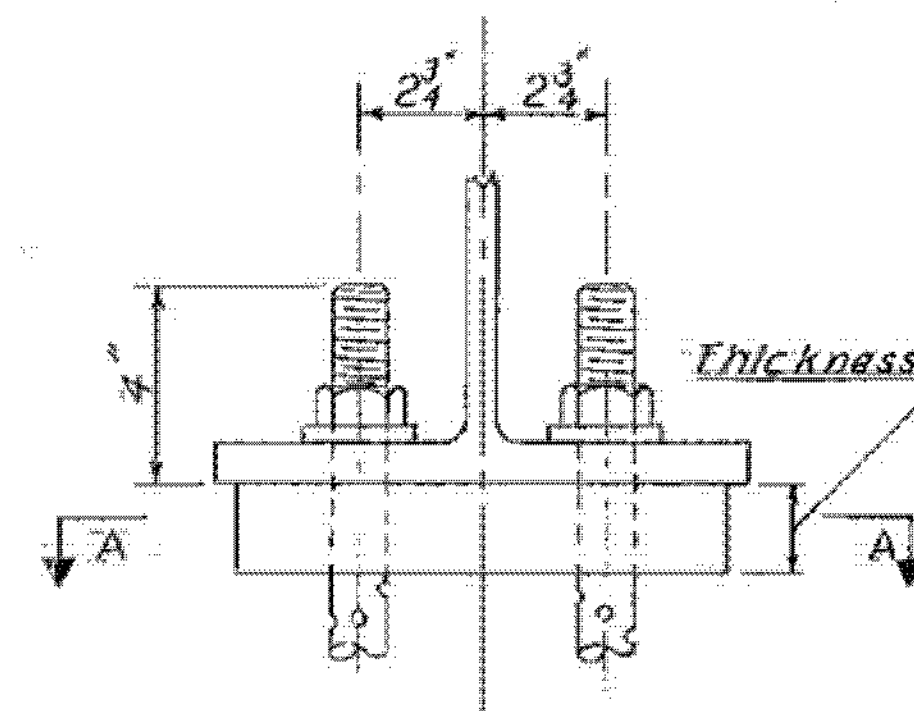


PLAN FOR SQUARE BRIDGES

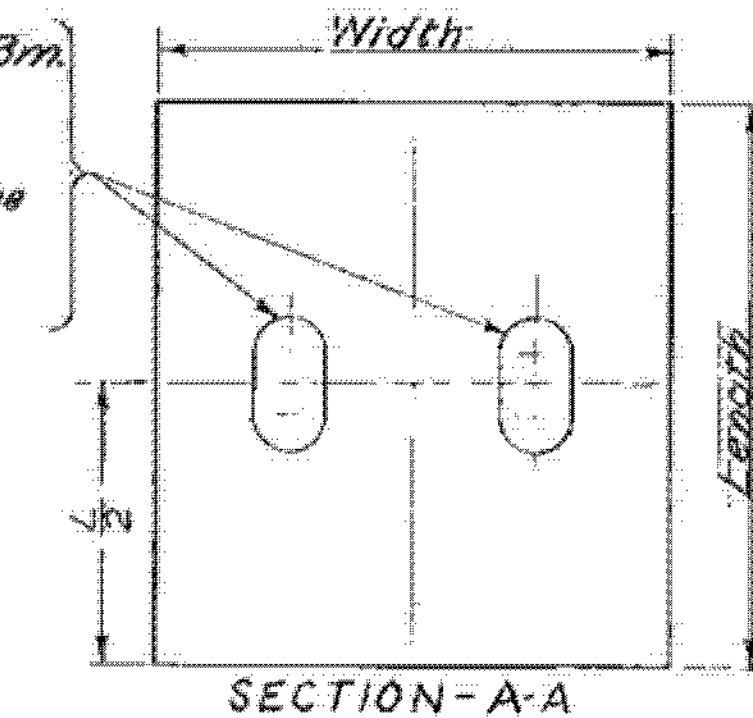
PLAN FOR SKEWED BRIDGES



SPAN	LENGTH	WIDTH	THICK-NESS	MAX. TAPER	Min. Brg. AREA
79'	12"	12"	2"	5/8"	140.0"
74'	11 1/2"	12"	2"	3/4"	134.5"
69'	11 1/2"	11 1/2"	1 3/4"	3/4"	128.5"
64'	11"	11 1/2"	1 3/4"	1/2"	123.5"
59'	11"	11"	1 1/2"	1/2"	118.5"
54'	10.5"	11"	1 1/2"	1/2"	114.0"
49'	10.5"	10.5"	1 1/4"	1/2"	108.5"
44'	10"	10.5"	1 1/4"	1/2"	105.0"
39'	10"	10"	1"	1/2"	97.0"
34'	9"	10"	1"	1/2"	89.0"

All Elastomeric Bearing Pads shall conform to A.A.S.H.O. Specification 1.6.47, Expansion Bearings, or its latest revision.

1 3/8" x 3" Slotted holes in Brm. Flange & Brg. Pads at Expansion end
1 1/8" Holes in Brm Flange and Brg. Pads at fixed end.



These details apply only to SCB. (24, 30, 37.25, 38, 42, 44) - 65
For additional details see SCB-D8-65

ELASTOMERIC BEARING PADS

REVISIONS & CORRECTIONS

Drawn By: *R. 12/1/62* Revised-WT-1125/65
 Traced By: *R. 12/1/62* Revised-WT-1125/65
 Checked By: *CEP, WMS, RSH, 12/1/62* Rev. WMS 1/17/65
 Recommended: *M. Byers* 2/4/65
 For Approval: *Bridge Engineer* Data
 Recommended: *R. H. Curran* 2/4/65
 For Approval: *Assist. Chief Engineer* Data
 Approved By: *G. D. Smith* 2/4/65
Chief Engineer Data

- DETAILS OF Wf BEAM BRIDGES
- (A) CURTAIN WALL AT BEARING DEVICES
 - (B) ELASTOMERIC BEARING PADS

VERMONT
DEPARTMENT OF HIGHWAYS
STRUCTURE STANDARDS

WESTMINSTER-NORWICH
RM BPNT (8)
SHEET 54 OF 58
FOR REFERENCE ONLY

SCB-D9-65