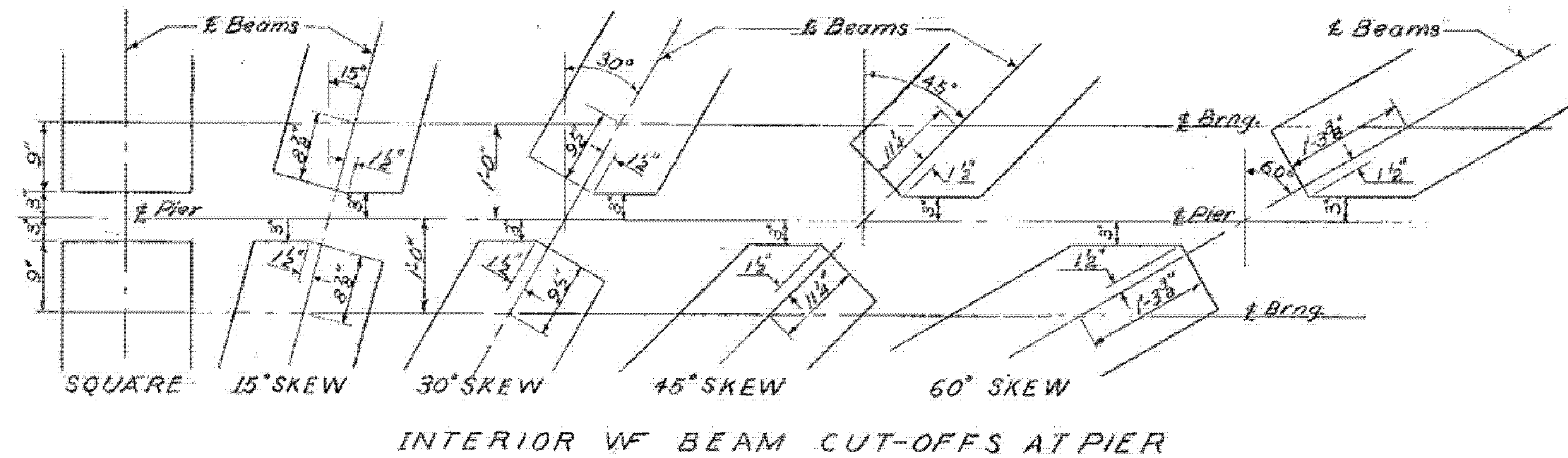
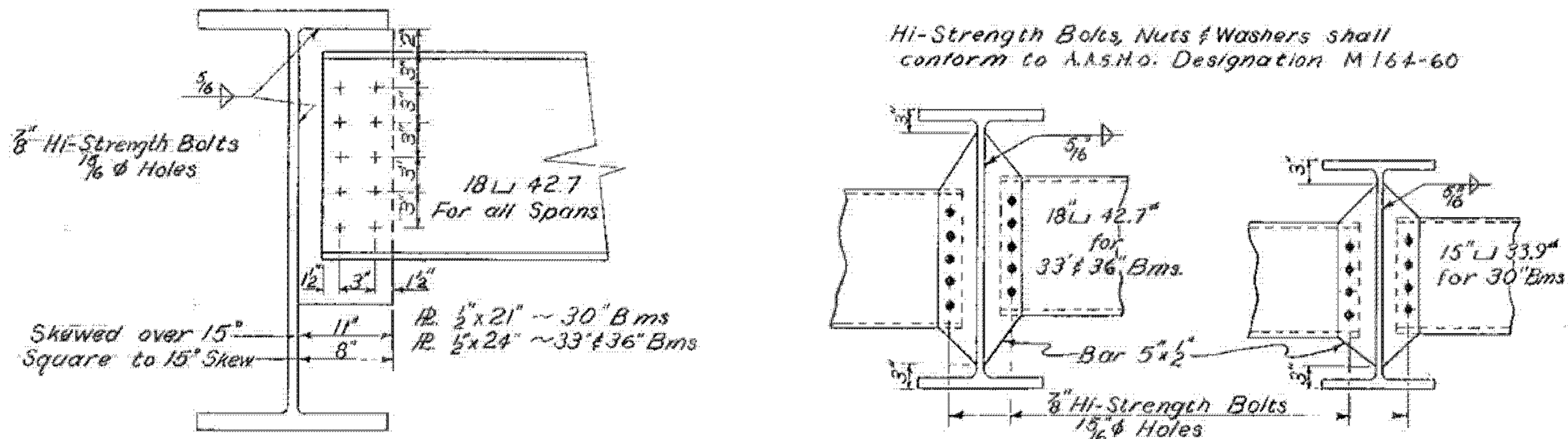


DETAILS OF PIER DIAPHRAGM CONNECTIONS



INTERIOR WF BEAM CUT-OFFS AT PIER



PIER DIAPHRAGMS

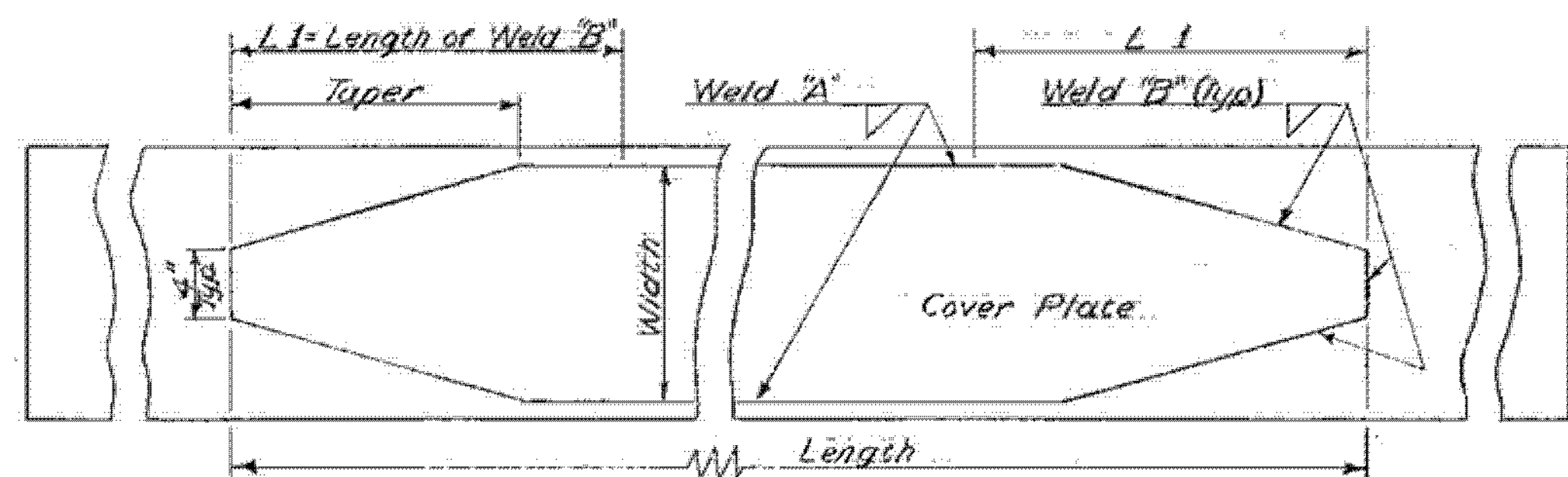
INTERMEDIATE DIAPHRAGMS

Max. Design 7-6 Bm Spacing - S.C.B. - 24, 30, 32, 33, 44 - 65

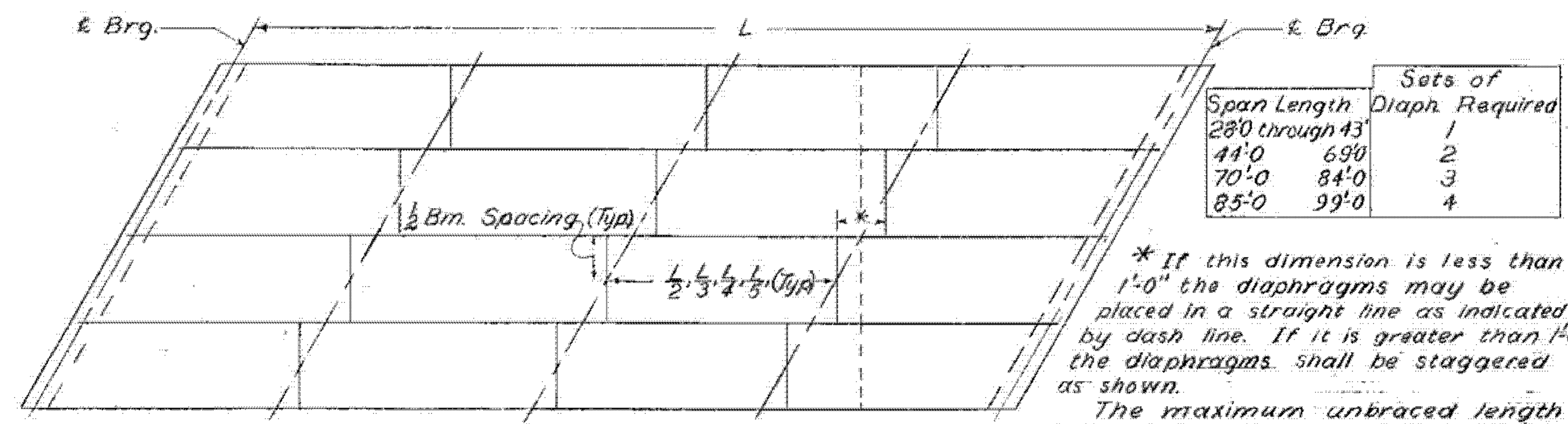
SPAN	COVER PL. LENGTH	WIDTH	THICKNESS	TAPER	WELD 'A'	WELD 'B'	L 1
99'-0"	66'-7"	14"	1 1/2"	1'-6"	3/8"	1/2"	3'-5 1/2"
94'-0"	65'-7"	14"	1 1/2"	1'-6"	3/8"	1/2"	3'-5 1/2"
89'-0"	59'-5"	14"	1 1/2"	1'-6"	3/8"	1/2"	2'-10"
84'-0"	49'-5"	14"	1 1/2"	1'-6"	3/8"	1/2"	1'-11"
79'-0"	49'-10"	10"	1 1/2"	1'-0"	3/8"	1/2"	2'-0"
74'-0"	47'-1"	10"	1 1/2"	1'-0"	3/8"	1/2"	1'-9 1/2"
69'-0"	45'-9"	10"	1"	1'-0"	3/8"	1/2"	---
64'-0"	42'-5"	10"	3/4"	1'-0"	3/8"	1/2"	---
59'-0"	31'-11"	10"	3/4"	1'-0"	3/8"	1/2"	---
54'-0"	27'-1"	8"	3/4"	1'-0"	3/8"	1/2"	---

Max. Design 7-0 Bm Spacing S.C.B. - 42 - 65

COVER PL. LENGTH	WIDTH	THICKNESS	TAPER	WELD 'A'	WELD 'B'	L 1
67'-5"	14"	1 1/2"	1'-6"	3/8"	1/2"	3'-5"
64'-7"	14"	1 1/2"	1'-6"	3/8"	1/2"	3'-5 1/2"
54'-9"	14"	1"	1'-6"	3/8"	1/2"	2'-3"
45'-1"	14"	3/4"	1'-6"	3/8"	1/2"	---
48'-11"	10"	1 1/2"	1'-0"	3/8"	1/2"	1'-9 1/2"
48'-1"	10"	1"	1'-0"	3/8"	1/2"	---
41'-3"	10"	3/4"	1'-0"	3/8"	1/2"	---
37'-8"	10"	3/4"	1'-0"	3/8"	1/2"	---
29'-1"	8"	3/4"	1'-0"	3/8"	1/2"	---
27'-1"	8"	3/4"	1'-0"	3/8"	1/2"	---



COVER PLATE DETAILS



DIAPHRAGM LOCATION PLAN

REVISIONS & CORRECTIONS

Drawn By: *X-12/62 Revised-WT-1/25/65*  
 Traced By: *X-12/62 Revised-WT-1/25/65*  
 Checked By: *EER WMS RSN-12/62 Revised 1/25/65*  
 Recommended: *JMB* Date: *2/4/65*  
 For Approval: *Bridge Engineer*  
 Recommended: *W.C.* Date: *2/4/65*  
 For Approval: *Assist. Chief Engineer*  
 Approved By: *G.D. Sisk* Date: *2/11/65*  
 Chief Engineer

DETAILS OF WF BEAM BRIDGES  
 STRUCTURAL STEEL DETAILS  
 (A) (D) (E) DIAPHRAGM DETAILS  
 (B) WF BEAM CUT-OFFS  
 (C) COVER PLATE DETAILS

VERMONT  
 DEPARTMENT OF HIGHWAYS  
 STRUCTURE STANDARDS

WESTMINSTER-NORWICH  
 IM BPNT (8)  
 SHEET 50 OF 58  
 FOR REFERENCE ONLY

# SCB-D7-65