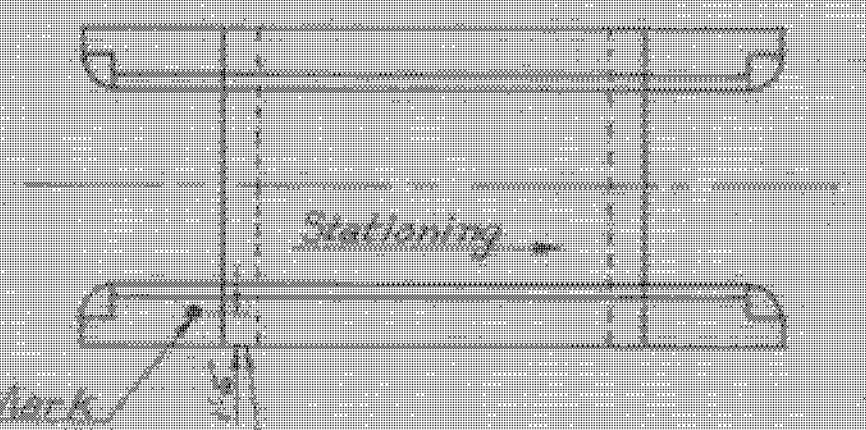
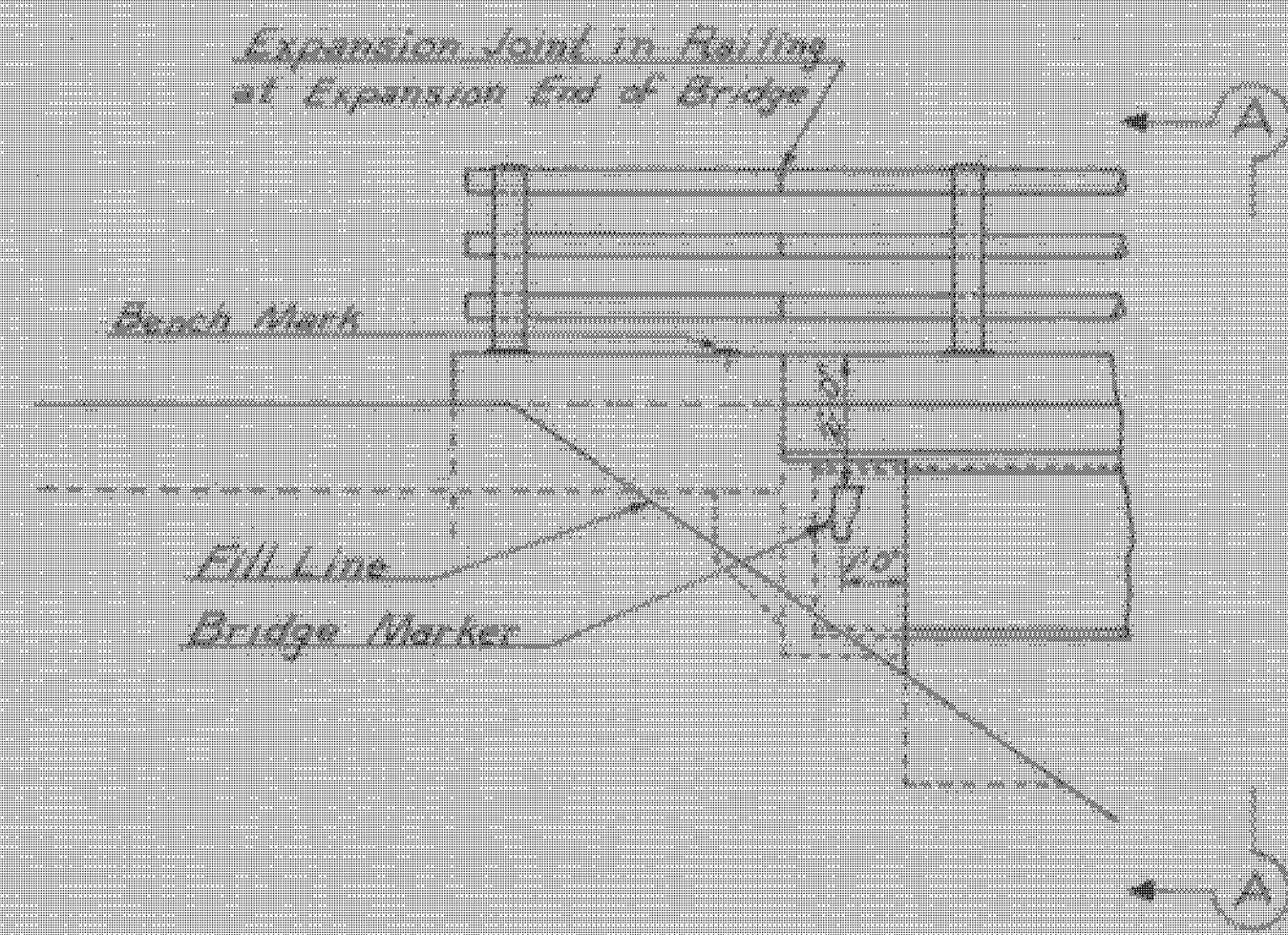


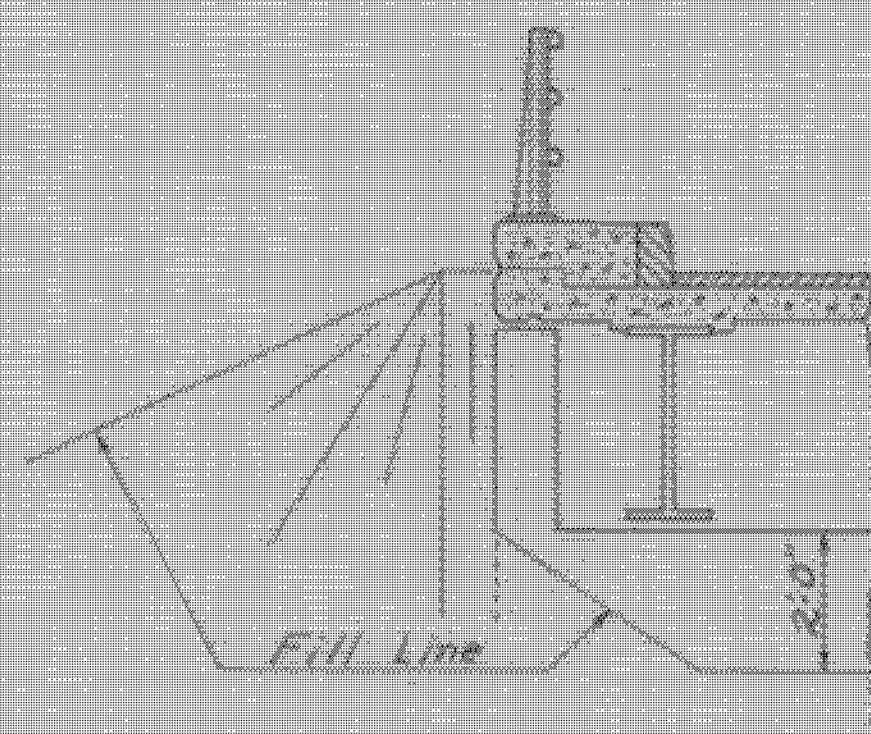
PLAN AT ABUTMENT



Bench Mark
 Bridge Marker to be set on right Abutment Wall at low bridge station as shown.



ELEVATION AT ABUTMENT



SECTION A-A

GENERAL NOTES

- SPECIFICATIONS: ALL MATERIALS AND CONSTRUCTION SHALL CONFORM TO THE STATE OF VERMONT, DEPARTMENT OF HIGHWAYS, STANDARD SPECIFICATIONS FOR HIGHWAY AND BRIDGE CONSTRUCTION DATED APRIL 1964, AND THE A.A.S.H.O. STANDARD SPECIFICATIONS FOR HIGHWAY BRIDGES DATED 1961, DESIGN 13 FOR 1620-RAILROADING MODIFIED FOR THE NATIONAL SYSTEM OF INTERSTATE HIGHWAYS, APPLIED IN ACCORDANCE WITH THE PROVISIONS OF THE A.A.S.H.O. STANDARD SPECIFICATIONS, ARTICLE 1.2.2.
- STRUCTURAL STEEL: UNLESS OTHERWISE NOTED ON THE PLANS ALL STRUCTURAL STEEL SHALL CONFORM WITH A S.T.M. DESIGNATION A-70-60T. UNLESS OTHERWISE DETAILED ALL FIELD CONNECTIONS SHALL BE MADE WITH 7/8" Ø HIGH STRENGTH BOLTS USING 1/2" Ø HOLES. WHERE CONNECTIONS ARE NOT DETAILED ON THE PLANS, THEY SHALL BE DETAILED BY THE FABRICATOR AND SUBMITTED TO THE STATE FOR APPROVAL.
- UNLESS OTHERWISE CALLED FOR, BEAMS SHALL BE CURVED TO THE MINIMUM CURVE LIKELY TO REMAIN PERMANENT AS INDICATED IN THE A.A.S.H.O. HANDBOOK. THE CAMBER SHALL APPROXIMATE A SIMPLE CIRCULAR CURVE FROM END TO END OF BEAM. TOLERANCES IN CAMBER SHALL BE AS INDICATED IN THE A.A.S.H.O. HANDBOOK.
- PRIOR TO THE SUPERSTRUCTURE BEING ERECTED, ELEVATIONS OF THE TOP OF THE ERECTED BEAMS SHALL BE TAKEN UNDER THE DIRECTION OF THE ENGINEER TO DETERMINE THE FINAL GRADE.
- NO SCOFFERS SHALL BE USED ON GRADE SEPARATION STRUCTURES UNLESS INDICATED ON THE PLANS.
- ON SUPERELEVATED BRIDGES, PERCE SCOFFERS ON THE LOW SIDE ONLY. EXCEPT FOR THE ABOVE RESTRICTIONS, SCOFFERS ARE NORMALLY PLACED MIDWAY BETWEEN INTERMEDIATE DIAPHRAGMS. PAYMENT FOR SCOFFERS SHALL BE MADE AT THE UNIT PRICE FOR STRUCTURAL STEEL, ITEM 109.
- SHRINK CONNECTORS: DETAILS OF SHRINK CONNECTORS SHALL BE SUBMITTED TO THE STATE FOR APPROVAL. EITHER CHANNEL OR STUD CONNECTORS MAY BE SUBSTITUTED IN LIEU OF THE SPIRAL. STUDS SHALL BE SUBSTITUTED ON THE BASIS OF TWO (2) 3/8" STUDS FOR EACH PITCH OF 3/8" Ø SPIRAL, OR ON THE BASIS OF TWO (2) 3/8" STUDS TO 1 1/2 TIMES THE PITCH OF A 5/8" Ø SPIRAL.
- PAINT: THE FINAL COAT OF FIELD PAINT SHALL BE GREEN, UNLESS OTHERWISE DIRECTED BY THE ENGINEER.
- CONCRETE: ALL CONCRETE IN THE SUPERSTRUCTURE SHALL BE CLASS RA. ALL EXPOSED EDGES OF CONCRETE SHALL BE CHAMFERED 1" X 1" UNLESS OTHERWISE INDICATED ON THE PLANS.
- CONSTRUCTION JOINTS SHALL BE AS INDICATED ON THE STANDARDS UNLESS OTHERWISE INDICATED ON THE PLANS.
- REINFORCING STEEL: FOR SKewed BRIDGES, TRANSVERSE SLAB REINFORCING "S" BARS SHALL BE FURNISHED AS FOR A SQUARE SPAN. THE "S" BARS SHALL BE CUT IN THE FIELD TO FIT THE SKWED END. THE CUT-OFF BARS SHALL BE USED BY THE OPPOSITE END OF THE SPAN. THE "S" BARS SHALL BE LONGITUDINAL AND THE NUMBER OF "S" AND "ST" BARS SHALL BE INCREASED. EXTRA BARS SHALL BE ADDED AT PIERS AS INDICATED. MINIMUM COVER FOR REINFORCING STEEL, MEASURED FROM THE SURFACE OF THE CONCRETE TO THE FACE OF THE REINFORCEMENT, SHALL BE 2" UNLESS OTHERWISE SPECIFIED.
- GENERAL:
1. ALL DIMENSIONS GIVEN ARE MEASURED HORIZONTALLY OR VERTICALLY UNLESS OTHERWISE NOTED.
 2. ALL DIMENSIONS ARE GIVEN AT 65° F. UNLESS OTHERWISE NOTED.
 3. WHERE BITUMINOUS CONCRETE PAVEMENT IS CALLED FOR AS A WEARING SURFACE ON BRIDGE DECKS AND APPROACH SLABS IT SHALL BE A DENSE GRADED TOP COURSE MATERIAL.
 4. BRIDGE RAILING POSTS ARE TO BE SET NORMAL TO BRIDGE UNLESS OTHERWISE NOTED.
 5. ALL EXPOSED EDGES OF CONCRETE IN SUPERSTRUCTURE SHALL BE CHAMFERED 1" X 1" UNLESS OTHERWISE INDICATED ON PLANS.
 6. BRIDGE SEAT ELEVATIONS SHOWN ON PLANS ARE FOR THE CENTERLINE OF BEARINGS.
 7. TOP SURFACES OF ALL PIERS AND ABUTMENTS SHALL BE SLOPED 1/4" PER FOOT EXCEPT AT BEARING PADS WHERE THE SURFACES SHALL BE LEVEL. ABUTMENTS SHALL BE SLOPED FROM THE FRONT EDGE OF THE CURTAIN WALL OR FACE OF BACKWALL, AND PIERS SHALL BE SLOPED FROM THE CENTERLINE OF PIER.
 8. THE ENTIRE EXPOSED TOP SURFACE OF THE ABUTMENTS AND PIERS SHALL BE COMED WITH ASPHALTIC ASBESTOS COATING 1/2" THICK AS PER ITEM 107. THIS ITEM SHALL BE APPLIED AFTER ALL PAINTING AND INCIDENTAL ITEMS ARE COMPLETED.
 9. UNLESS OTHERWISE DESIGNATED ALL EXPANSION MATERIAL SHALL NOT CONTAIN ASPHALT OR BITUMINOUS MATERIAL AND IT SHALL CONFORM WITH A.A.S.H.O. DESIGNATION WFS-1 TYPE 11.
 10. BORINGS INDICATED ON THE DRAWINGS HAVE BEEN MADE FOR DESIGN PURPOSES ONLY AND ARE NOT WARRANTED TO SHOW ACTUAL SUB-SURFACE CONDITIONS.
 11. ALL PILING SHALL BE DRIVEN IN ACCORDANCE WITH SECTION 505.03 (C) (3) STATE OF VERMONT, DEPARTMENT OF HIGHWAYS, STANDARD SPECIFICATIONS FOR HIGHWAY AND BRIDGE CONSTRUCTION APPROVED APRIL 1964, EXCEPT AS MODIFIED BY NOTES ON PROJECT PLANS.
 12. ALLOWABLE DESIGN STRESSES:
 CONCRETE COMP. 3,000 P.S.I. FOR 1,200 P.S.I.
 STRUCTURAL STEEL 25,000 P.S.I. (A572) OTHER STEELS AS PER A.A.S.H.O. SPECS.
 REINFORCING STEEL 25,000 P.S.I. TENSION
 18,000 P.S.I. COMPRESSION
 13. THE DIMENSIONS OF WELDED STRUCTURAL MEMBERS SHALL BE WITHIN THE LIMITS SET UP IN PAR. 407 DIMENSIONAL TOLERANCES A.A.S.H.O. 1961 SPECIFICATIONS FOR WELDED HIGHWAY AND RAILWAY BRIDGES.

REVISIONS AND CORRECTIONS
 1. Note 13 Added WMS 3-29-65
 2. Deleted Bituminous Wearing and Slab No. from General Note 3 RLD 6-24-66

DRAWN BY: WBT Jan 26, 1965
 TRACED BY: WBT Jan 26, 1965
 CHECKED BY: WMS Feb 3, 1965
 RECOMMENDED FOR APPROVAL: [Signature] BRIDGE ENGINEER 2/11/65
 RECOMMENDED FOR APPROVAL: [Signature] ASSISTANT CHIEF ENGINEER 2/11/65
 APPROVED BY: [Signature] CHIEF ENGINEER 2/14/65

DETAILS OF W F BEAM BRIDGES
 GENERAL INFORMATION
 &
 GENERAL NOTES

VERMONT
 DEPARTMENT OF HIGHWAYS
 STRUCTURE STANDARDS

WESTMINSTER-NORWICH
 IM BPNT (8)
 SHEET 42 OF 58
 FOR REFERENCE ONLY

SCB-DI-65