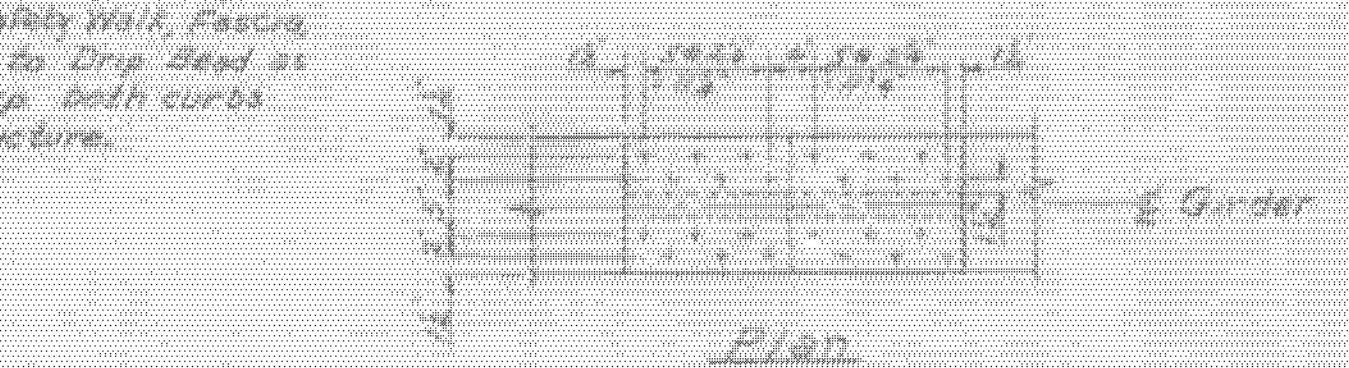
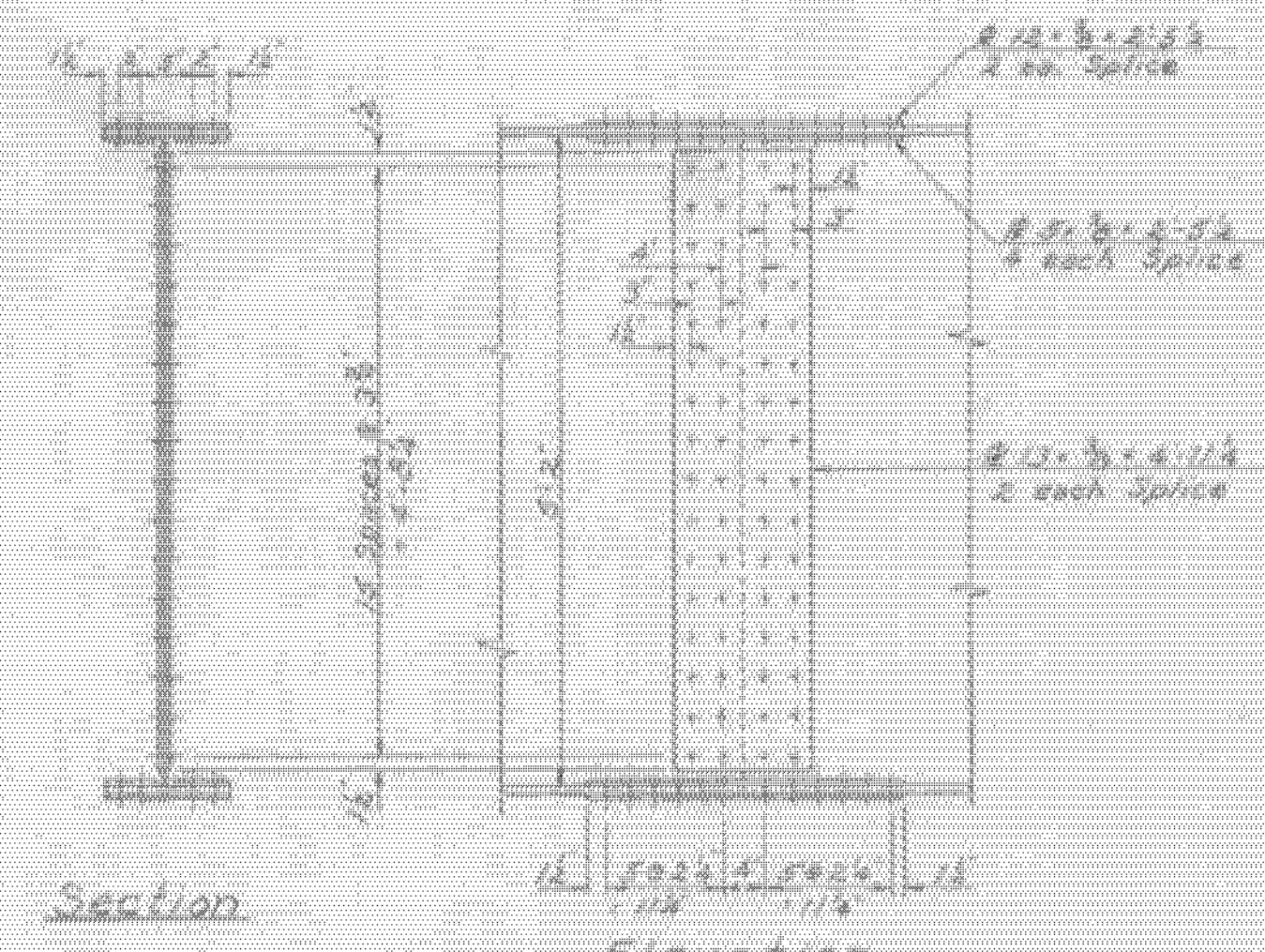


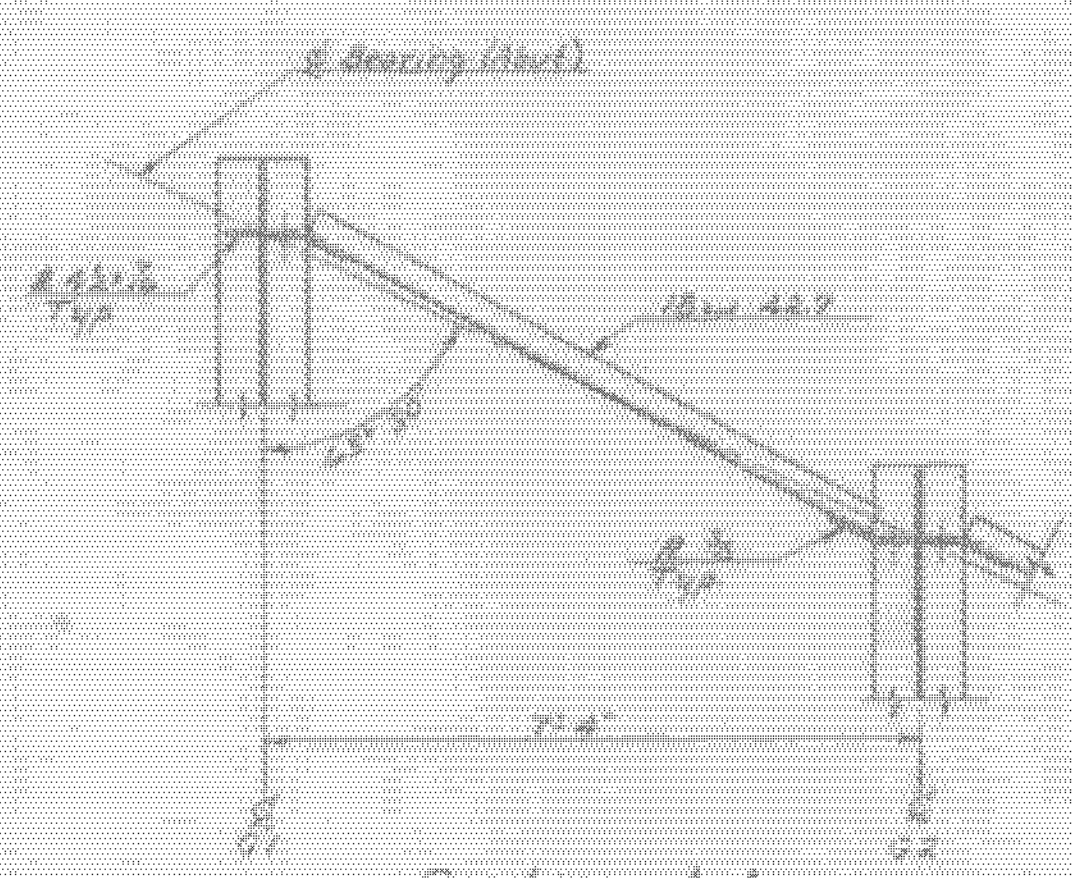
Typical Section - Northbound
Scale: 1/2" = 1'-0"



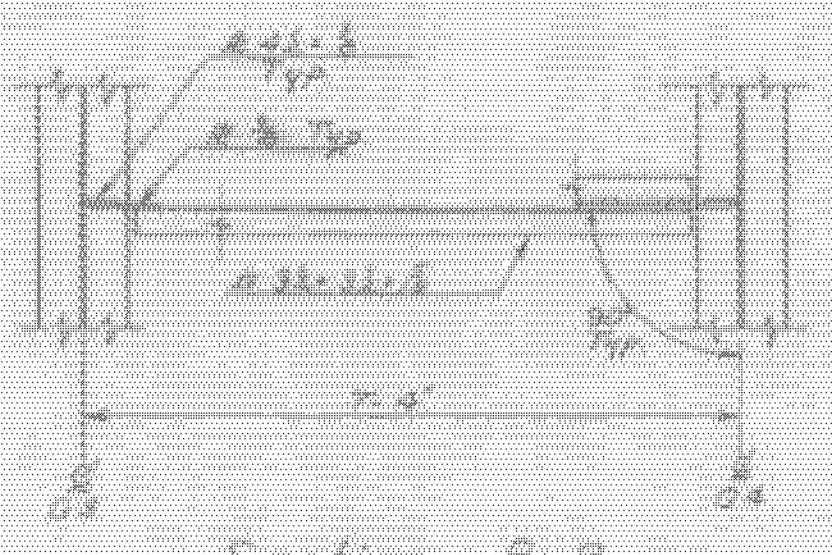
Plan



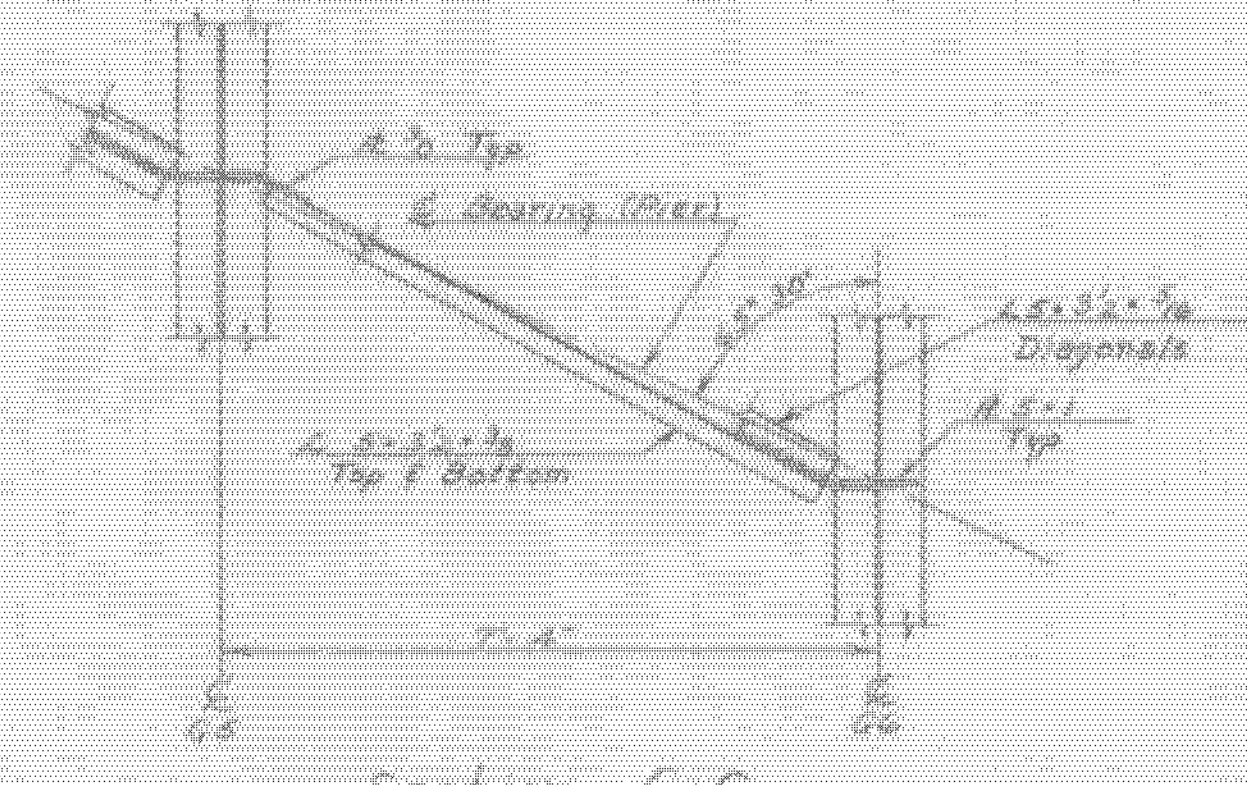
Field Splice Detail
Scale: 3/4" = 1'-0"



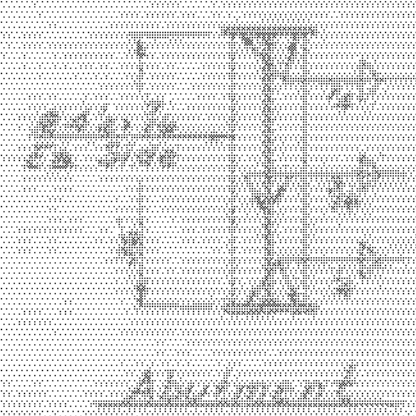
Section A-A
Scale: 3/4" = 1'-0"



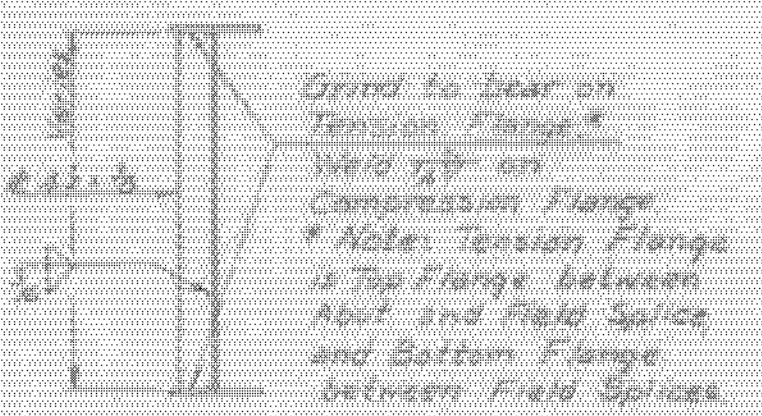
Section B-B
Scale: 3/4" = 1'-0"



Section C-C
Scale: 3/4" = 1'-0"



Abutment



Intermediate



Pier

Note: Clip 1'-1" on inside corners of all stiffeners.

Stiffener Details
Scale: 1/2" = 1'-0"



Slab Pour Sequence
N.T.S.

WESTMINSTER-NORWICH
IM BPNT (8)
SHEET 33 OF 58
BRIDGE 48
FOR REFERENCE ONLY

STATE OF VERMONT
DEPARTMENT OF HIGHWAYS

PROJECT: NORWICH
TOWN OF: NORWICH BR 48
ROUTE NO. 191 STA. 2975+50
I 91 OVER VT 10A
NO SECTION AND GROUND DETAILS
SCALE: As NOTED
IN CHARGE: E. Goley
DRAWN BY: J. T. JONES CHECKED BY: J. G. BURGESS
PROJECT NO. I 91-2(40)
SHEET 33 OF 58 BR 48