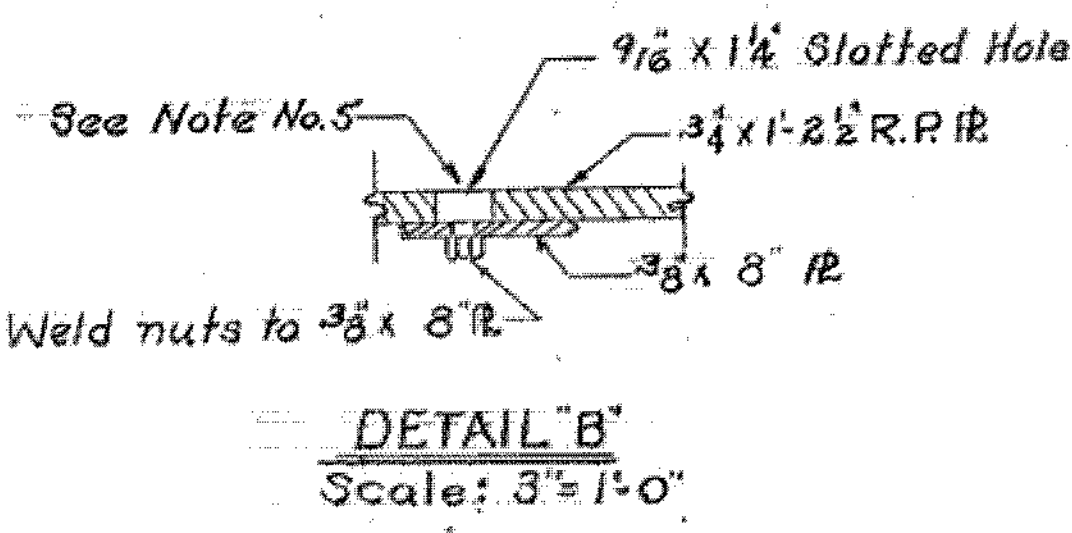


WESTMINSTER-NORWICH
 IM BPNT (B)
 SHEET 29 OF 58
 BRIDGE 46
 FOR REFERENCE ONLY

ITEM NO.	ITEM	UNIT	NET	TOTAL	FINAL
	CHAN. EXCAV. OF EARTH	C.Y.			
	CHAN. EXCAV. OF ROCK	C.Y.			
	UNCLASS. CHAN. EXCAV.	C.Y.			
	STRUCT. EXCAV.	C.Y.			
	CONC. CLASS AA (MOD.)	C.Y.			
	CONC. CLASS B (MOD.)	C.Y.			
	REINF. STEEL	LBS.			
	ASPHALTIC-ASB. COATING	S.Y.			
	TREATED TIMBER PILING	L.F.			
	SPLICES FOR STEEL PILING	EA.			
	STEEL PILING	L.F.			
	UNTREATED TIMBER PILING	L.F.			

STATE OF VERMONT
 DEPARTMENT OF HIGHWAYS
 TOWN OF HARTFORD (Urban)
 ROUTE NO. LOG STA.
Chandler Road over 191
Expansion Dam Details
 SCALE As Noted
 SURVEYED BY Singleton
 DRAWN BY J.V.C. CHECKED BY L.F.S.
 PROJECT NO. 191-2(4)
 SHEET 11 OF 26

- NOTES**
- All parts of this expansion dam that are exposed to water after erection, shall be ASTM A242 steel.
 - * 2. Indicates dimensions to be correct @ 45°F.
 3. Adjust expansion dam to conform to grade by means of adjustment bolts.
 4. For additional drainage structural tubing details see BR-309 and SCB-D3-65, Details A, C and E.
 5. Remove 1/2" bolts in 3/4 x 1 1/2" Raised Pattern IR immediately after concrete has initial set, and fill holes with Joint Sealer-Hot Poured Item 372-A.
 6. Suitable anchor straps may be substituted for the 3/4" welding studs.
 - ** 7. Pour temporary 3" wide section of concrete to top of Plate. Pack concrete under Plate. Chip out concrete after set as shown within 24 hours. Pave to edge of Plate.



SECTION C-C
 Scale: 1 1/2" = 1'-0"

SECTION A-A
 Scale: 1" = 1'-0"

DETAIL A
 Scale: 3" = 1'-0"

SECTION B-B
 Scale: 1 1/2" = 1'-0"

STAGE I CONSTRUCTION