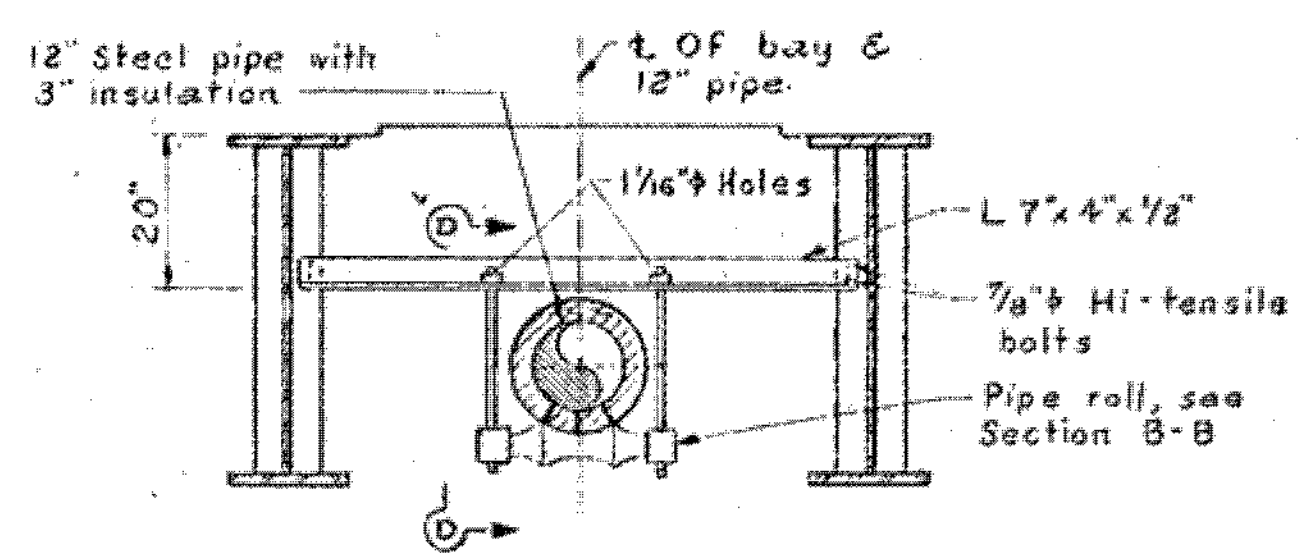
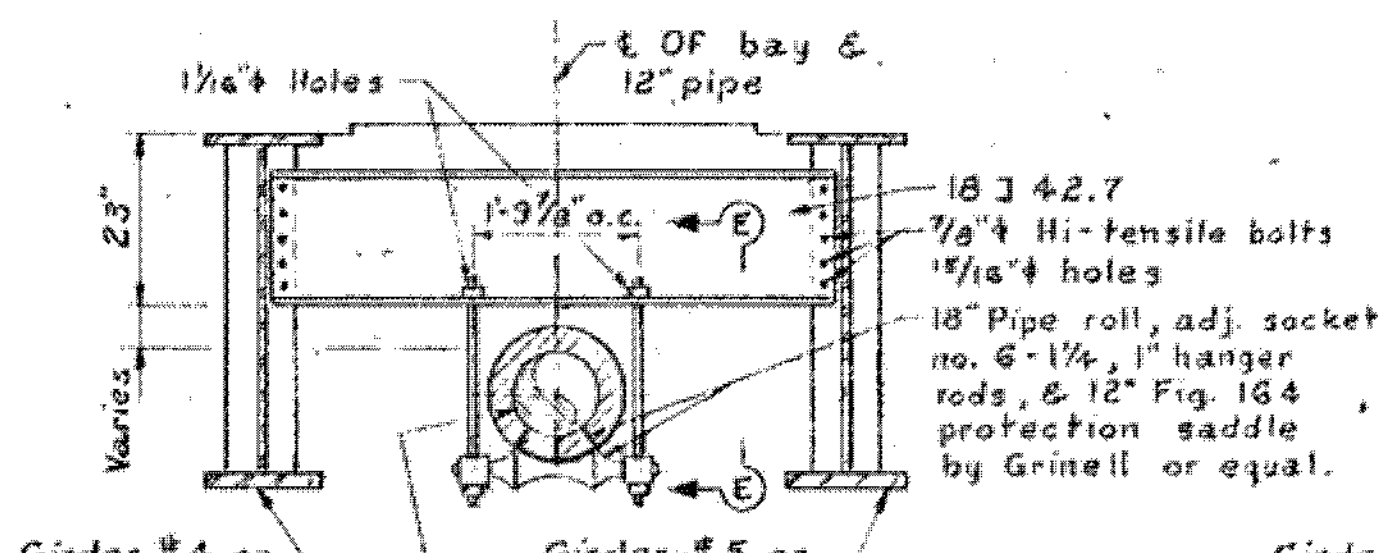


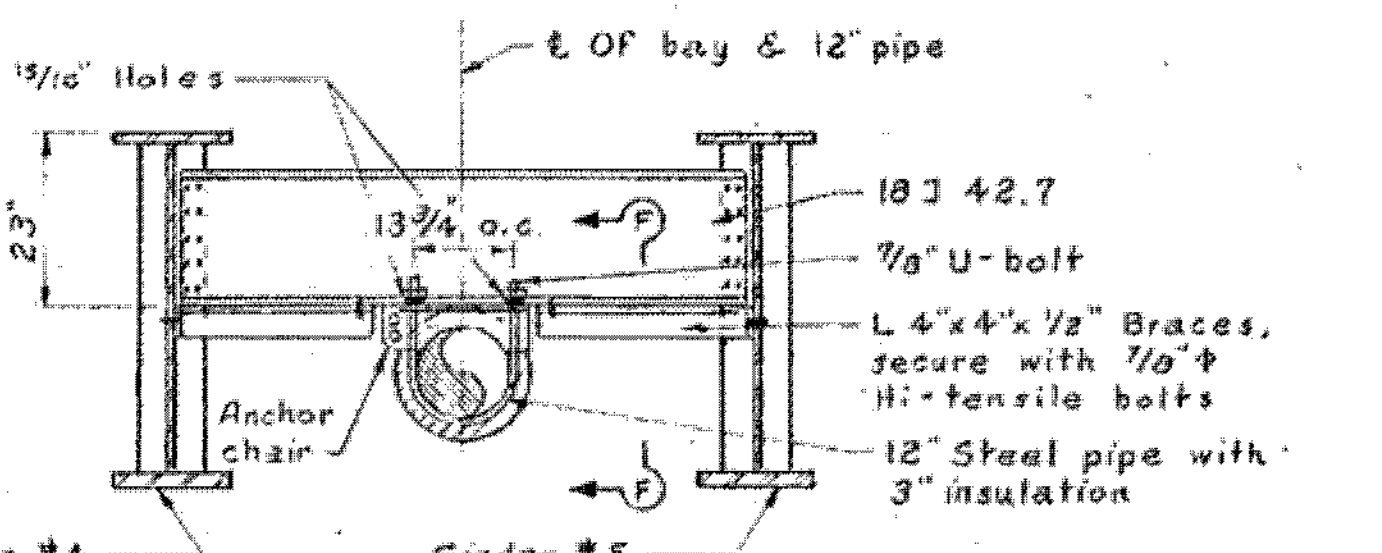
**PLAN**  
Scale: 1" = 10'



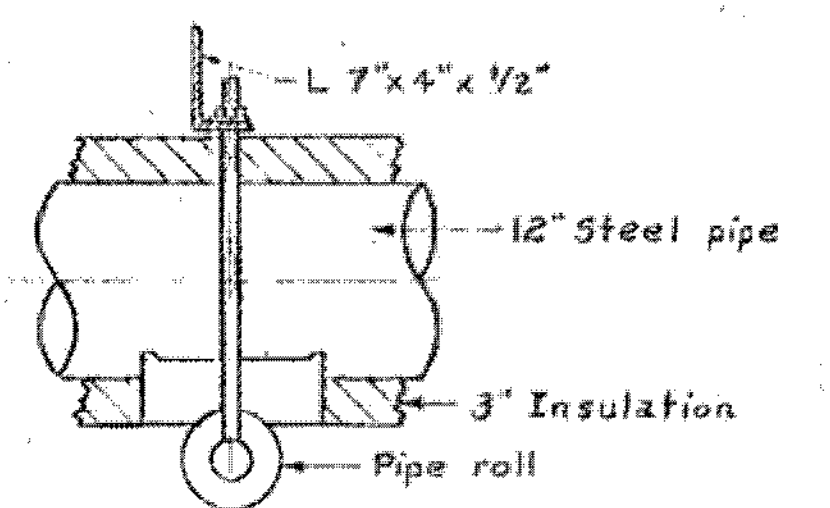
**SECTION A-A**  
Scale: 1/2" = 1'-0"



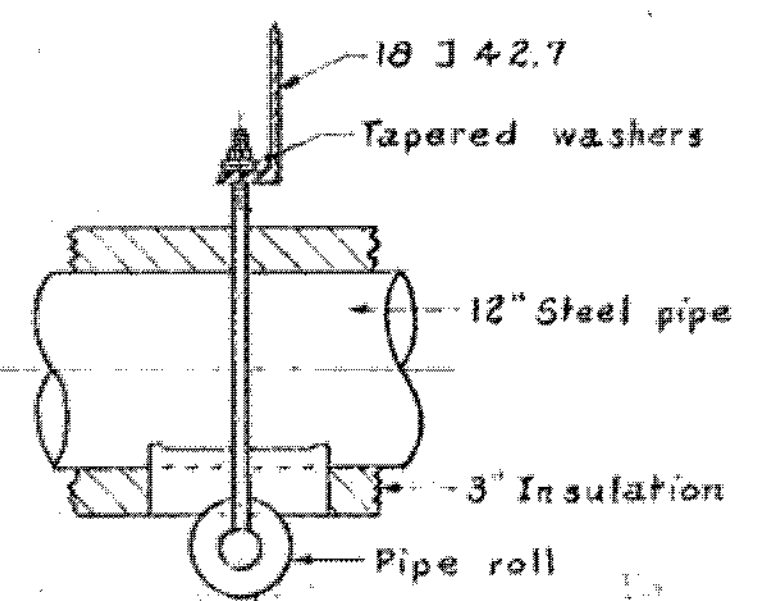
**SECTION B-B**  
Scale: 1/2" = 1'-0"



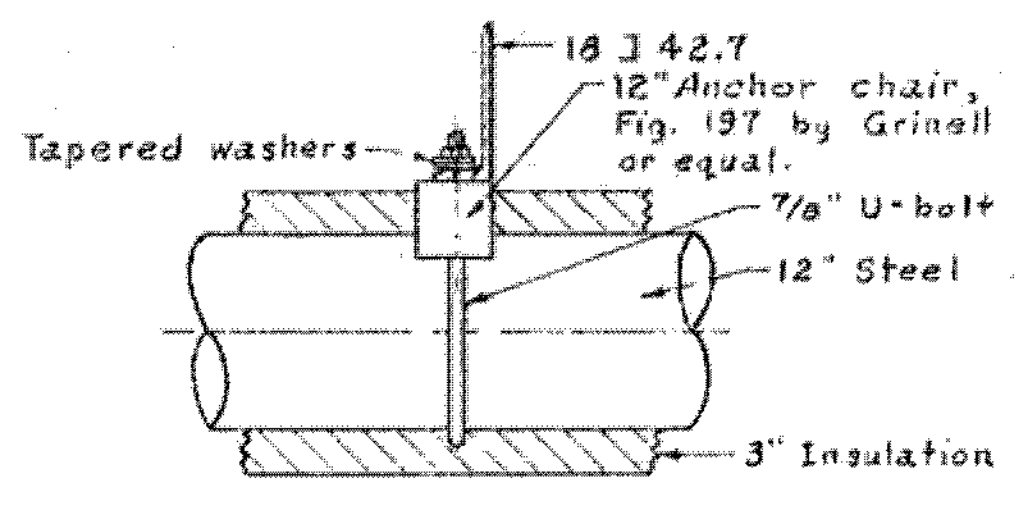
**SECTION C-C**  
Scale: 1/2" = 1'-0"



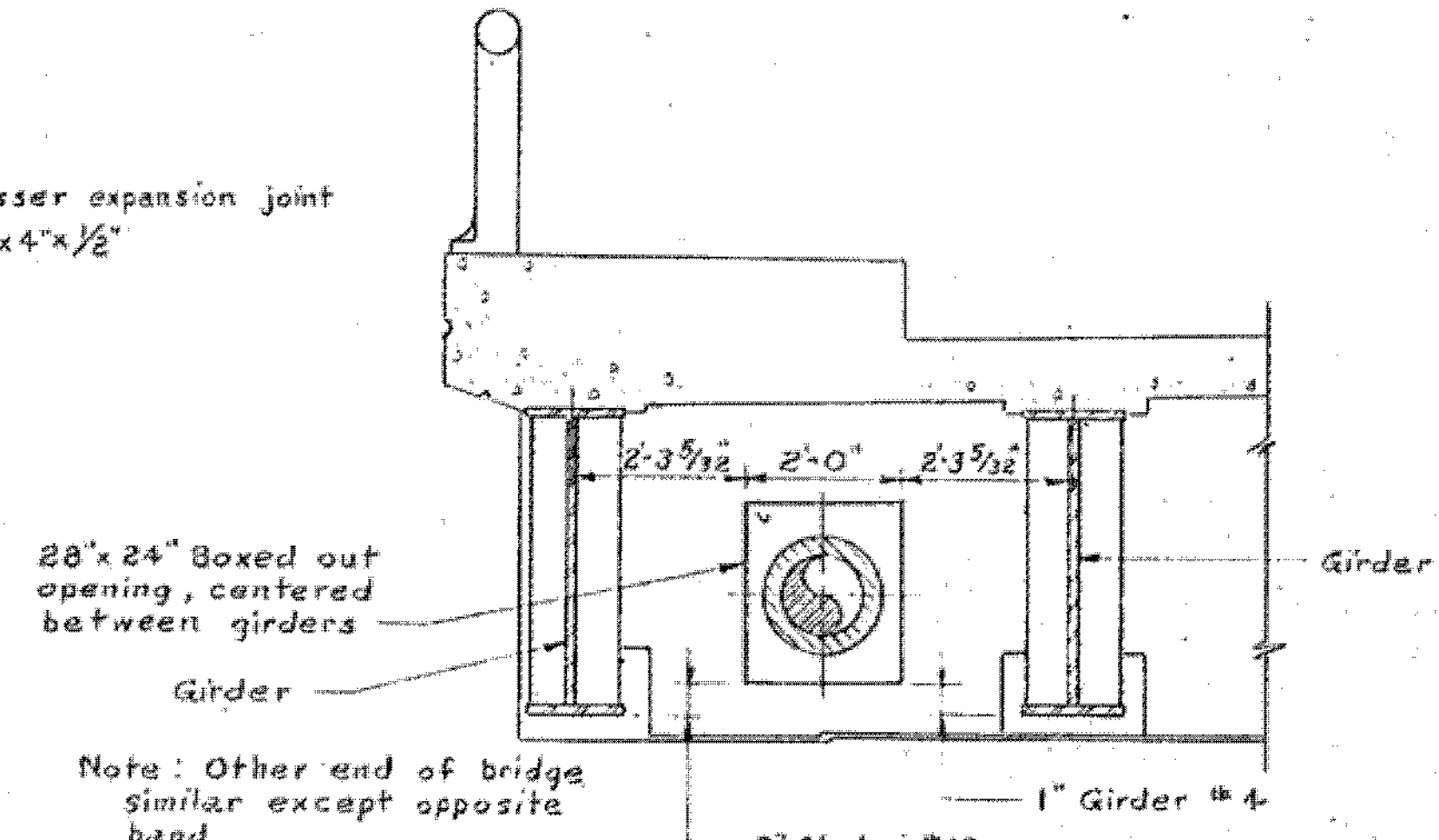
**SECTION D-D**  
Scale: 1" = 1'-0"



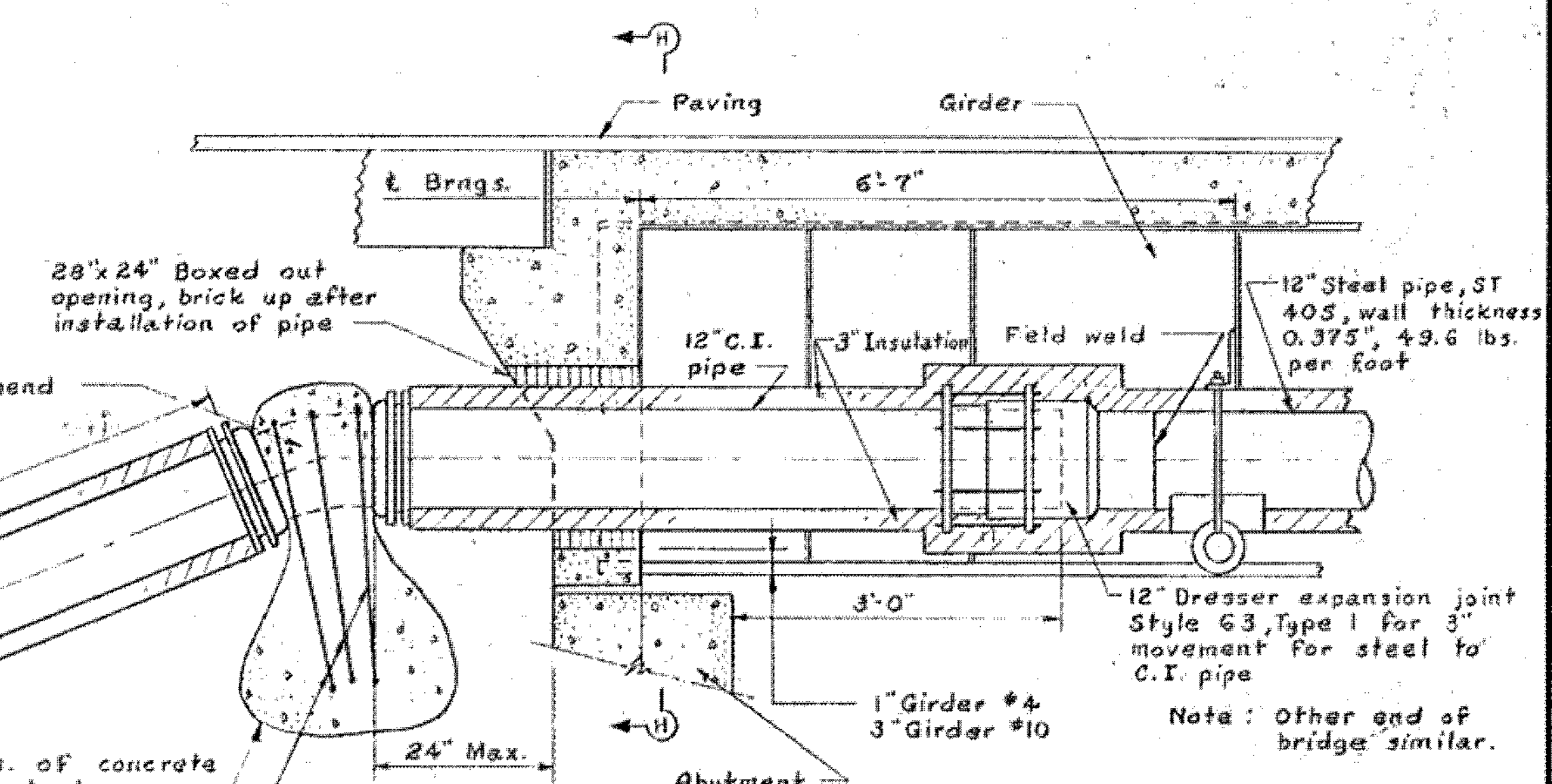
**SECTION E-E**  
Scale: 1" = 1'-0"



**SECTION F-F**  
Scale: 1" = 1'-0"



**SECTION H-H**  
Scale: 1/2" = 1'-0"



**SECTION G-G**  
Scale: 3/4" = 1'-0"

- Notes**
- Materials for the 12" water main including hangers shall be furnished and installed by the contractor. For further details refer to the Special Provisions covering utilities.
  - 18 J 42.7 diaphragms, L's 7x4x1/2, L's 4x4x1/2, 7/8" hi-tensile bolts, nuts and washers are included in the bridge quantities.
  - For details of diaphragms not shown, see Standard Drawing SCB-D7-65

Note: Fill outside abutment to be compacted with power tampers in 6" layers to provide support for pipe & concrete anchor.

WESTMINSTER-NORWICH  
IM BPNT (8)  
SHEET 28 OF 58  
BRIDGE 46  
FOR REFERENCE ONLY

CAMP, DRESSER & MCKEE  
Consulting Engineers  
Boston, Mass. 225-4645

**STATE OF VERMONT**  
DEPARTMENT OF HIGHWAYS

TOWN of Hartford (Urban)

ROUTE No. 100 STA. 100

Chandler Road over I91

Water Main Details Across Bridge

SCALE As Noted

SURVEYED BY

DRAWN BY R.R.S. CHECKED BY F.Y.E.

PROJECT NO. I91-2(4)

SHEET 28 OF 58