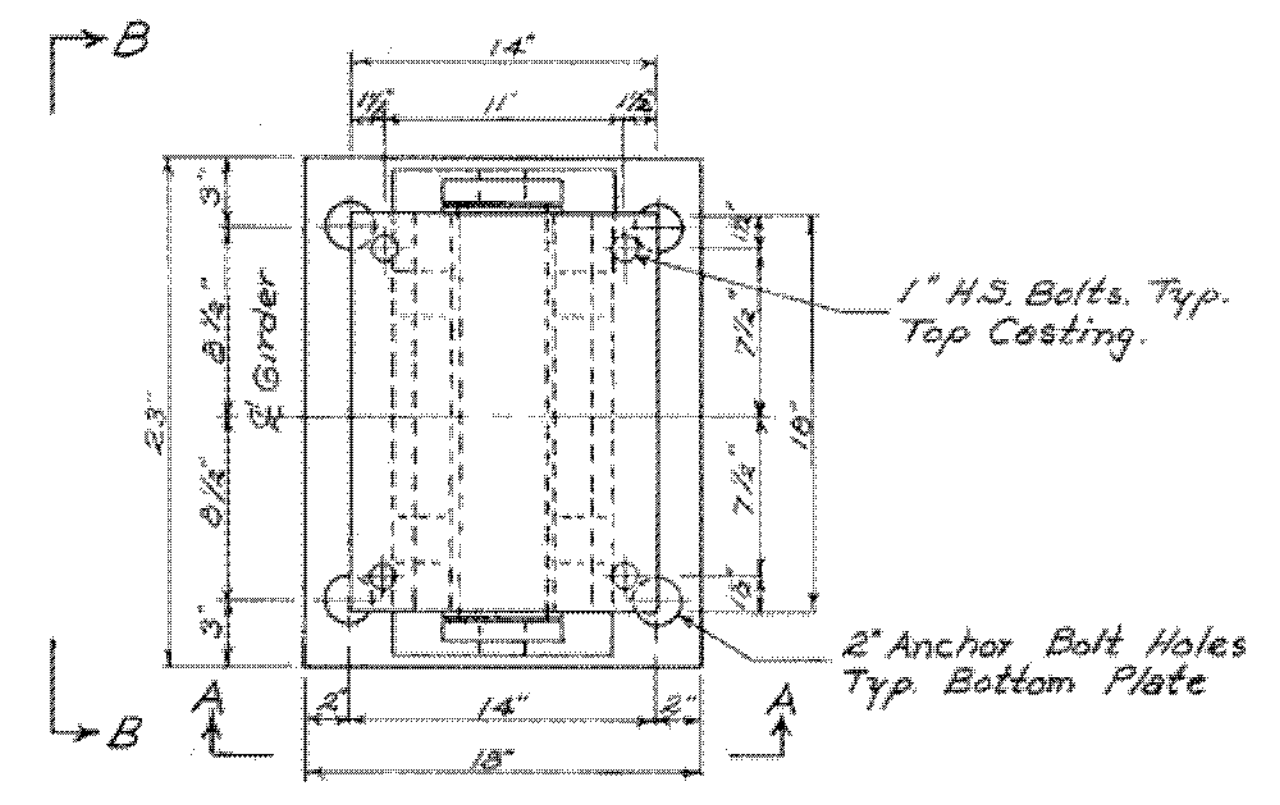
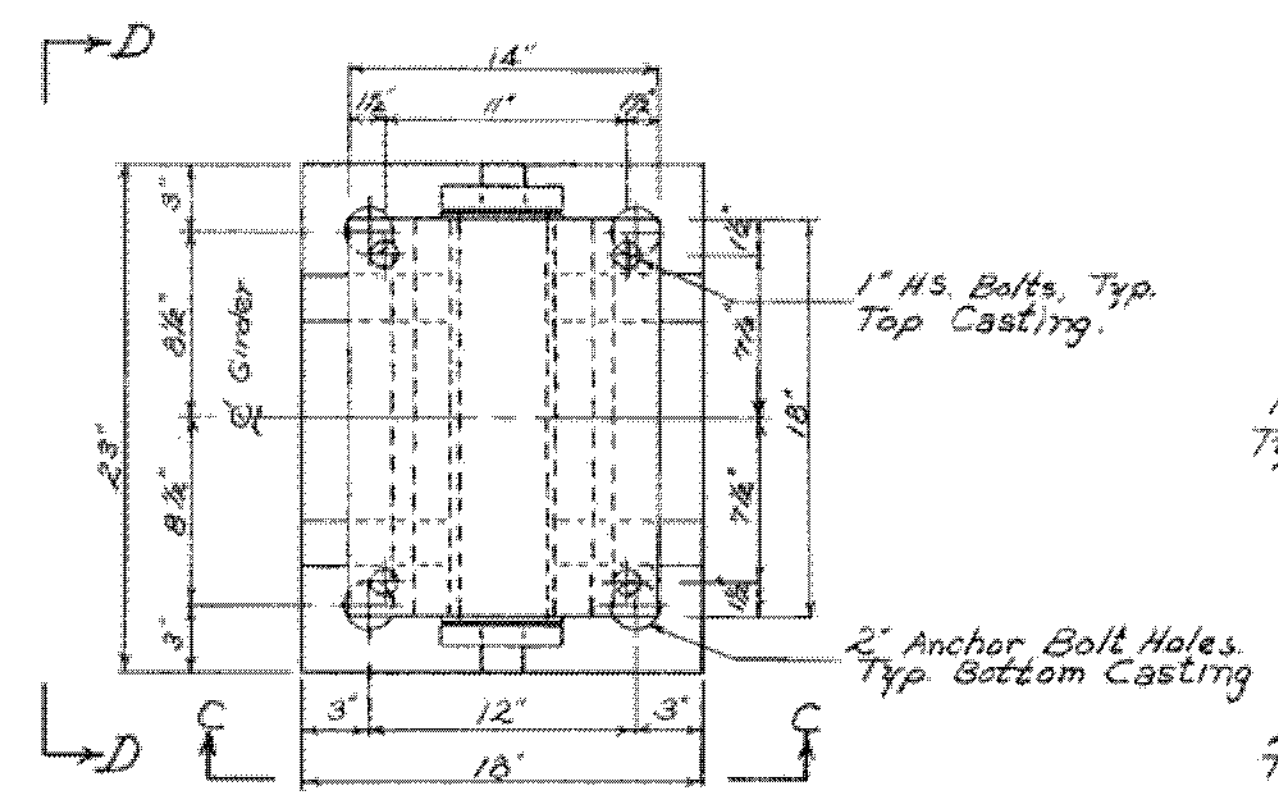


Notes

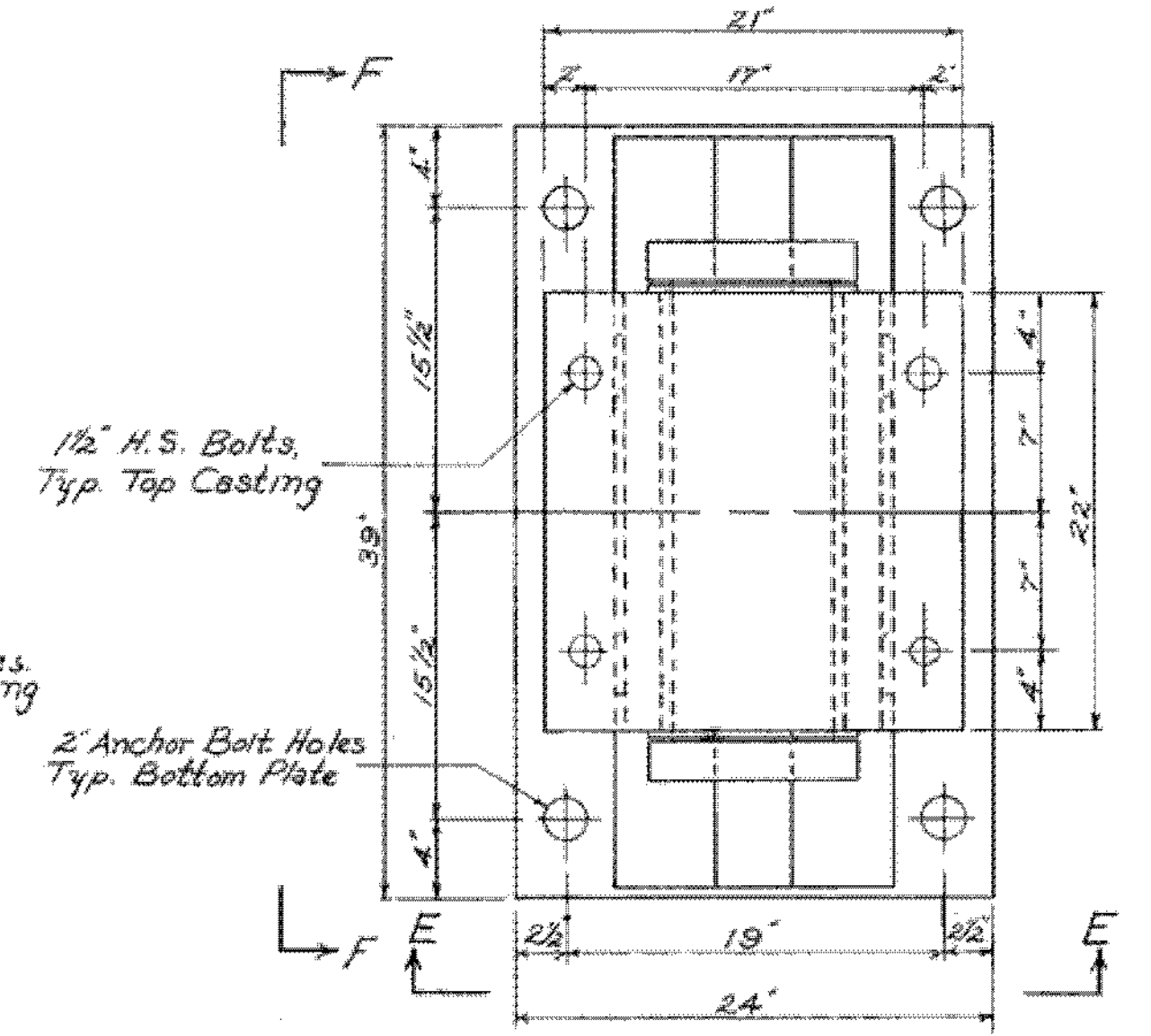
1. Preformed Fabric Pads $\frac{1}{2}$ " thick, equal in size to the bearing plates, shall be used under each bearing to conform with AASHTO Standard Specifications for Highway Bridges 1961, Section 2.10.3(K).
2. The Fabricator may furnish the bearing devices either as steel castings conforming with "Steel Castings for Highway Bridges," AASHTO Designation M-192 Class 70 or as welded assemblies using structural steel conforming with AASHTO Designation M183 in which case the weldment shall be stress relieved by heat treatment in accordance with AWS Specifications Section 4.12. Should the fabricator elect to furnish a weldment in lieu of the details indicated for castings he may submit details for modifying the devices to facilitate welding the assembly.
3. Align devices so that all rocker arm shafts will be vertical at 45°F.



Plan - Exp. End Abut. Bearing Device

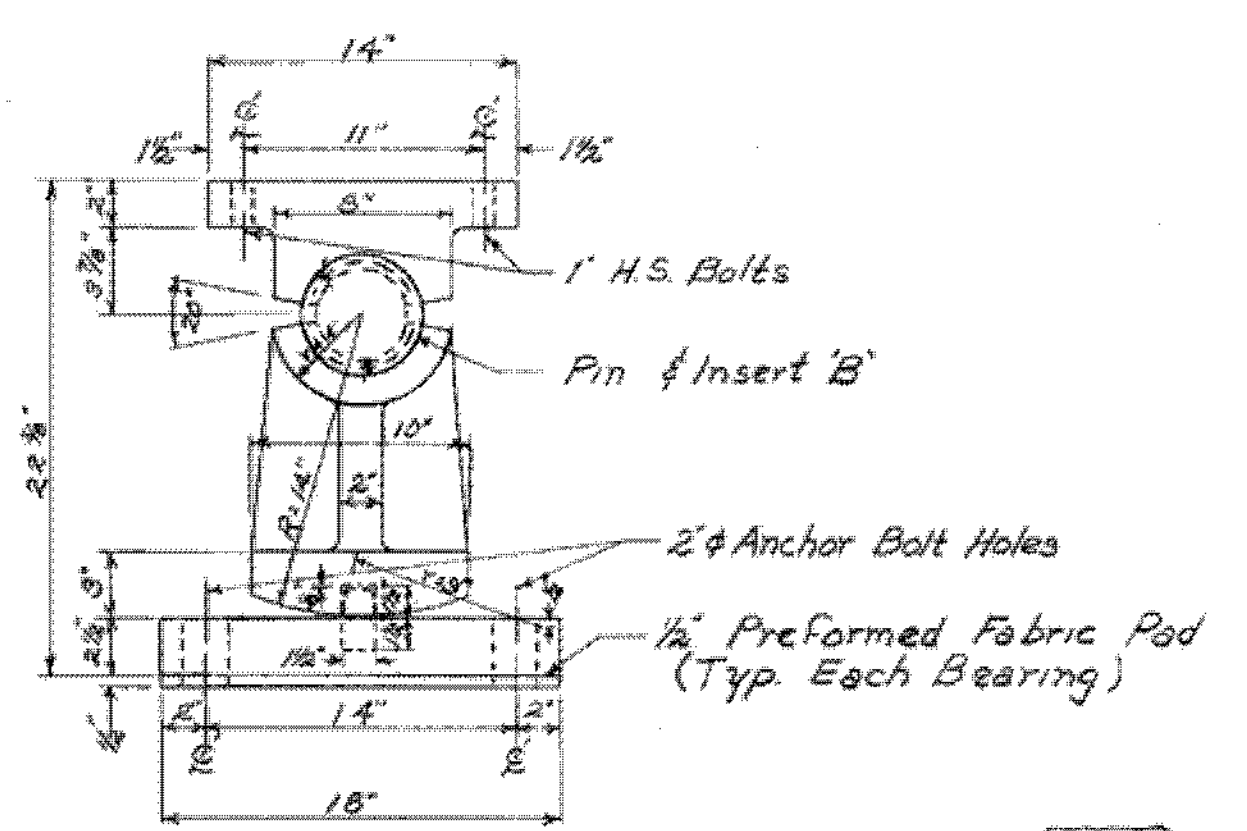


Plan - Fixed End Abut. Bearing Device

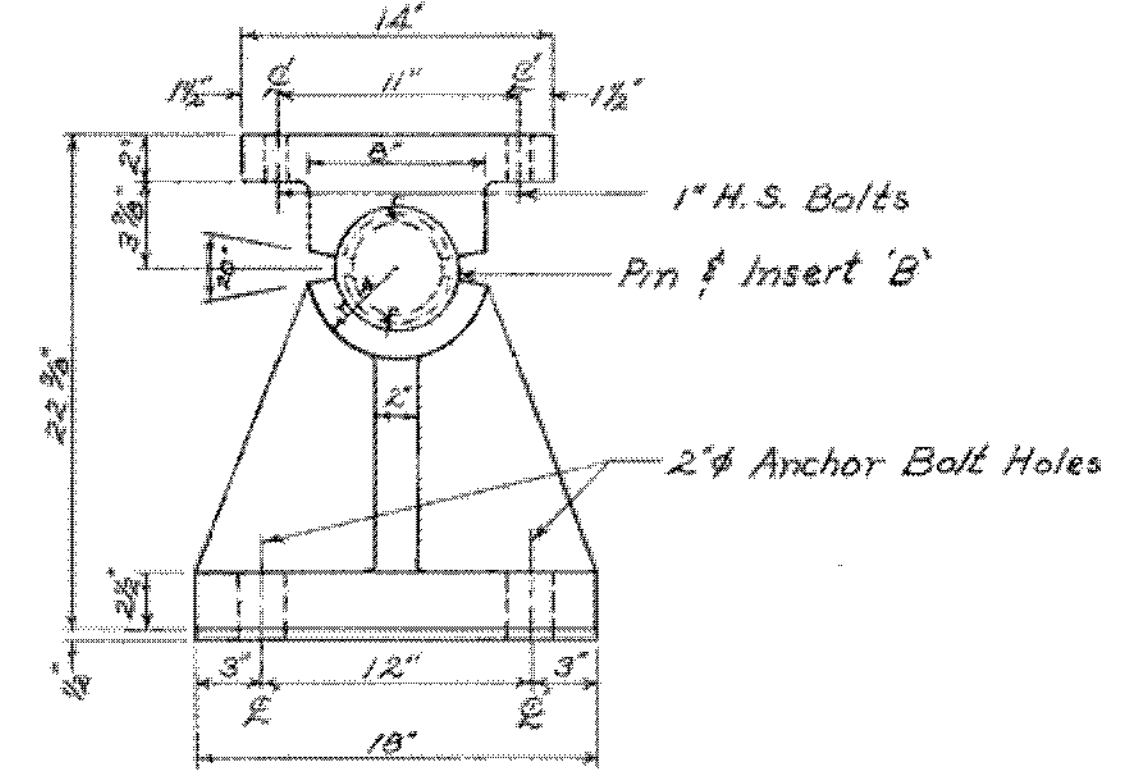


Plan - Pier Bearing Device

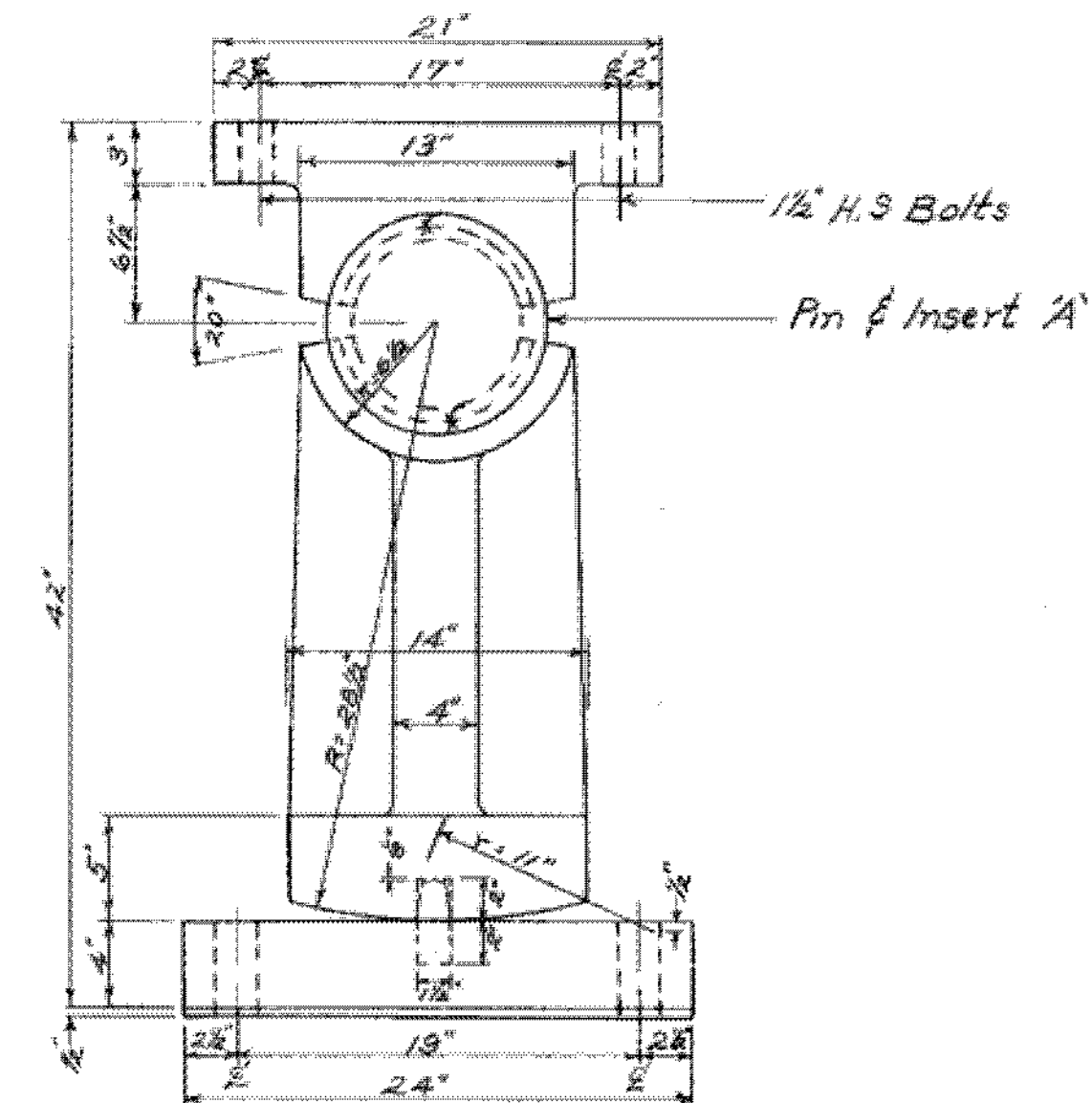
Weight of Fixed Bearing = 1000 lbs
 Weight of 22 3/8" Expansion Bearing = 1000 lbs
 Weight of 42" Expansion Bearing = 3900 lbs.



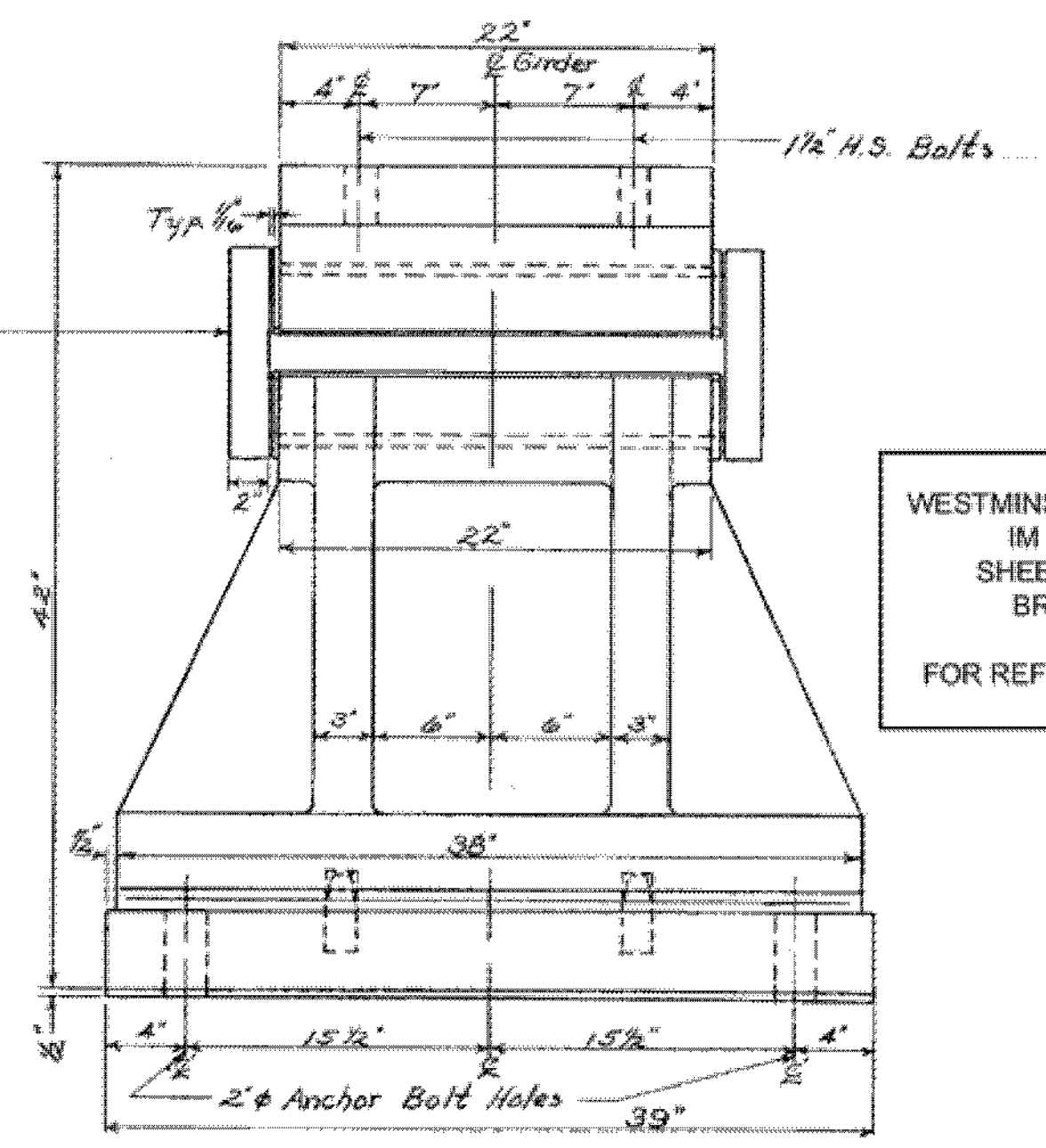
Elev. A-A



Elev. C-C

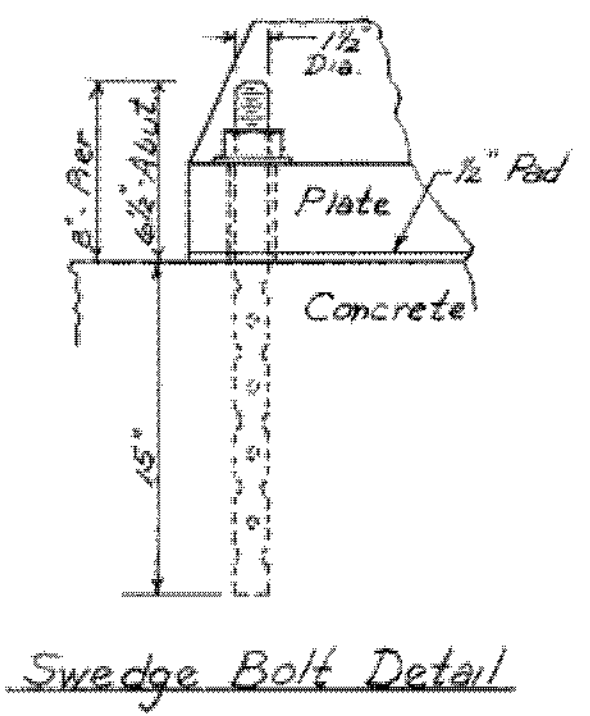


Elev. E-E

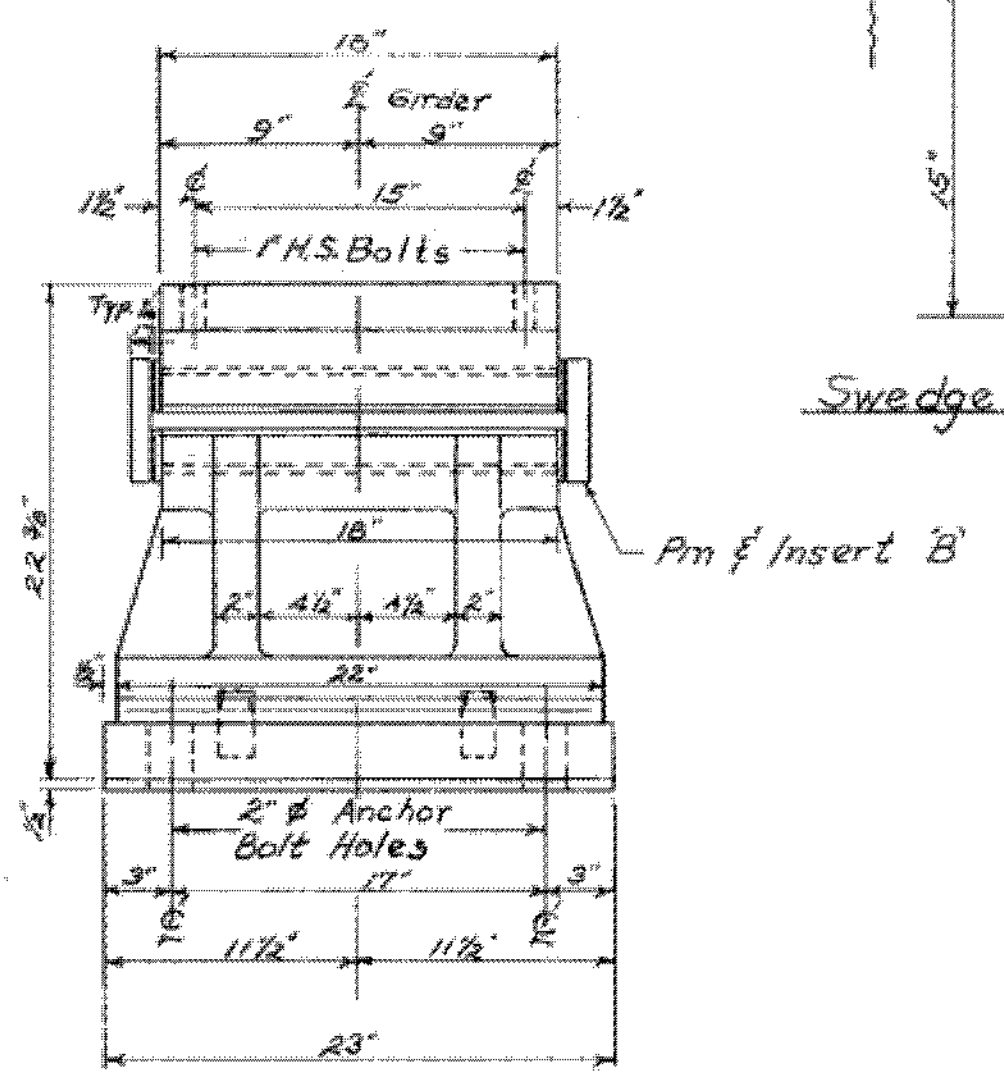


Elev. F-F

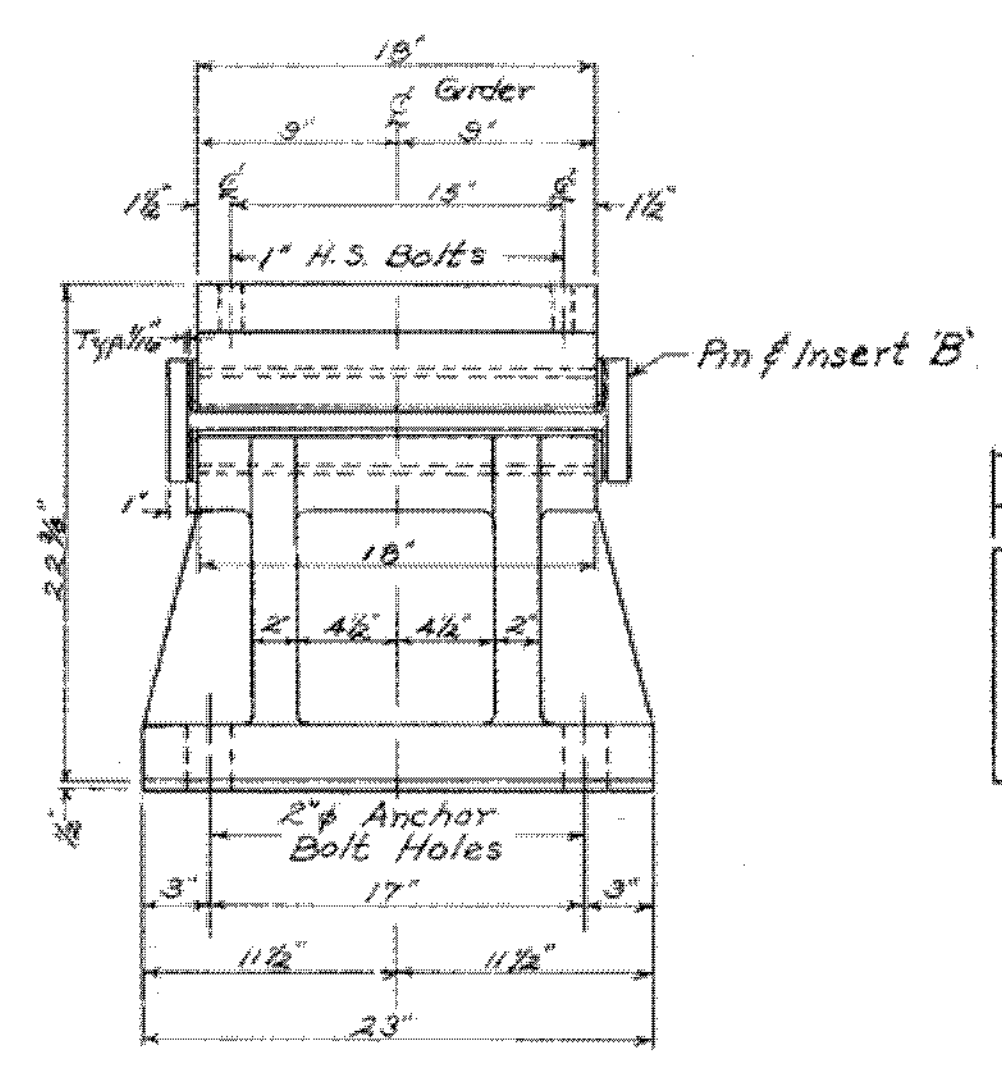
WESTMINSTER-NORWICH
 IM BPNT (8)
 SHEET 23 OF 58
 BRIDGE 40
 FOR REFERENCE ONLY



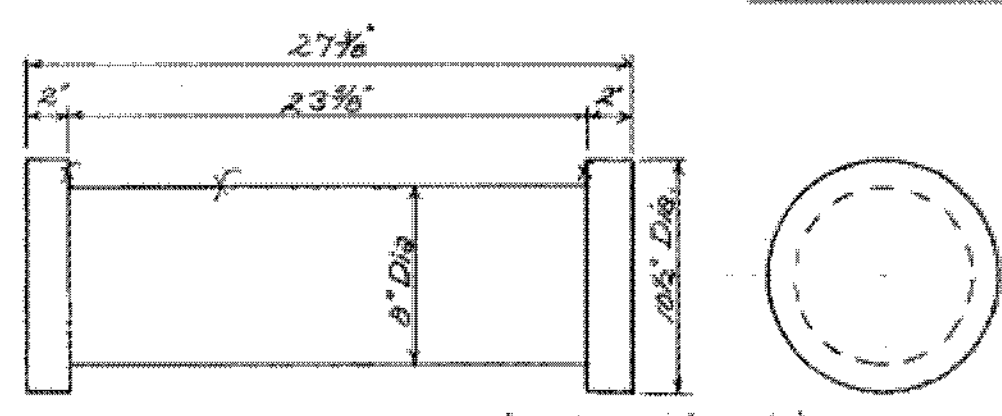
Swedge Bolt Detail



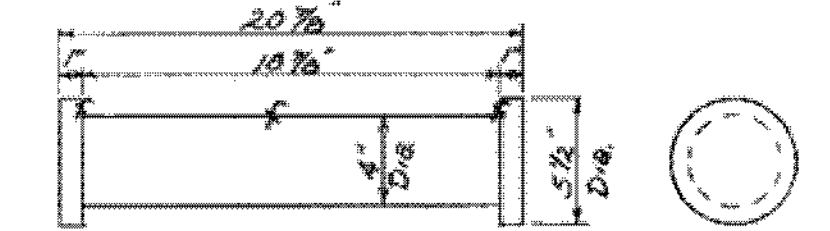
Elev. B-B



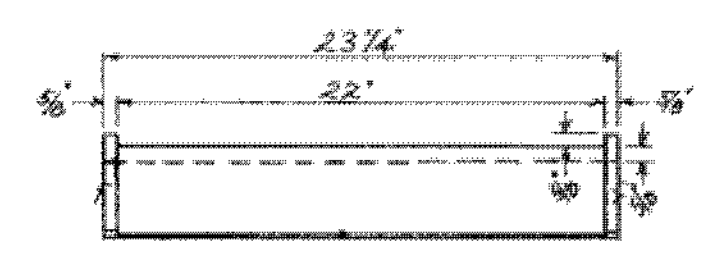
Elev. D-D



Detail - Pin A

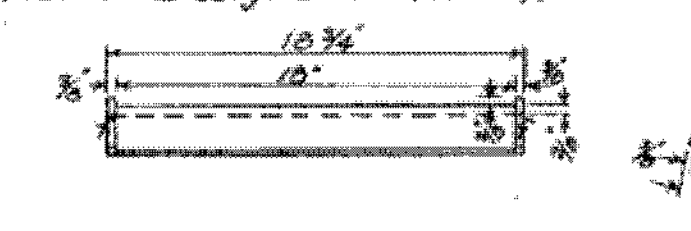


Detail - Pin B



Detail - Bronze Insert A

Note: Bronze Inserts to be Cast Bridge Bearing Bronze - ASTM B-22-52, Alloy E, AASHTO Designation M 107.



Detail - Bronze Insert B

Br. 213 of 222

STATE OF VERMONT
 DEPARTMENT OF HIGHWAYS

TOWN OF Hartland
 ROUTE NO. 191 Log STA. 3525.95
 191 over Ottauquechee River
 Abut. & Pier Bearing Devices

SCALE 1/2" = 1'-0"

SURVEYED BY _____
 DRAWN BY WBT CHECKED BY AGC
 PROJECT NO. 191-1(22) Cont. A
 SHEET 64 OF 103