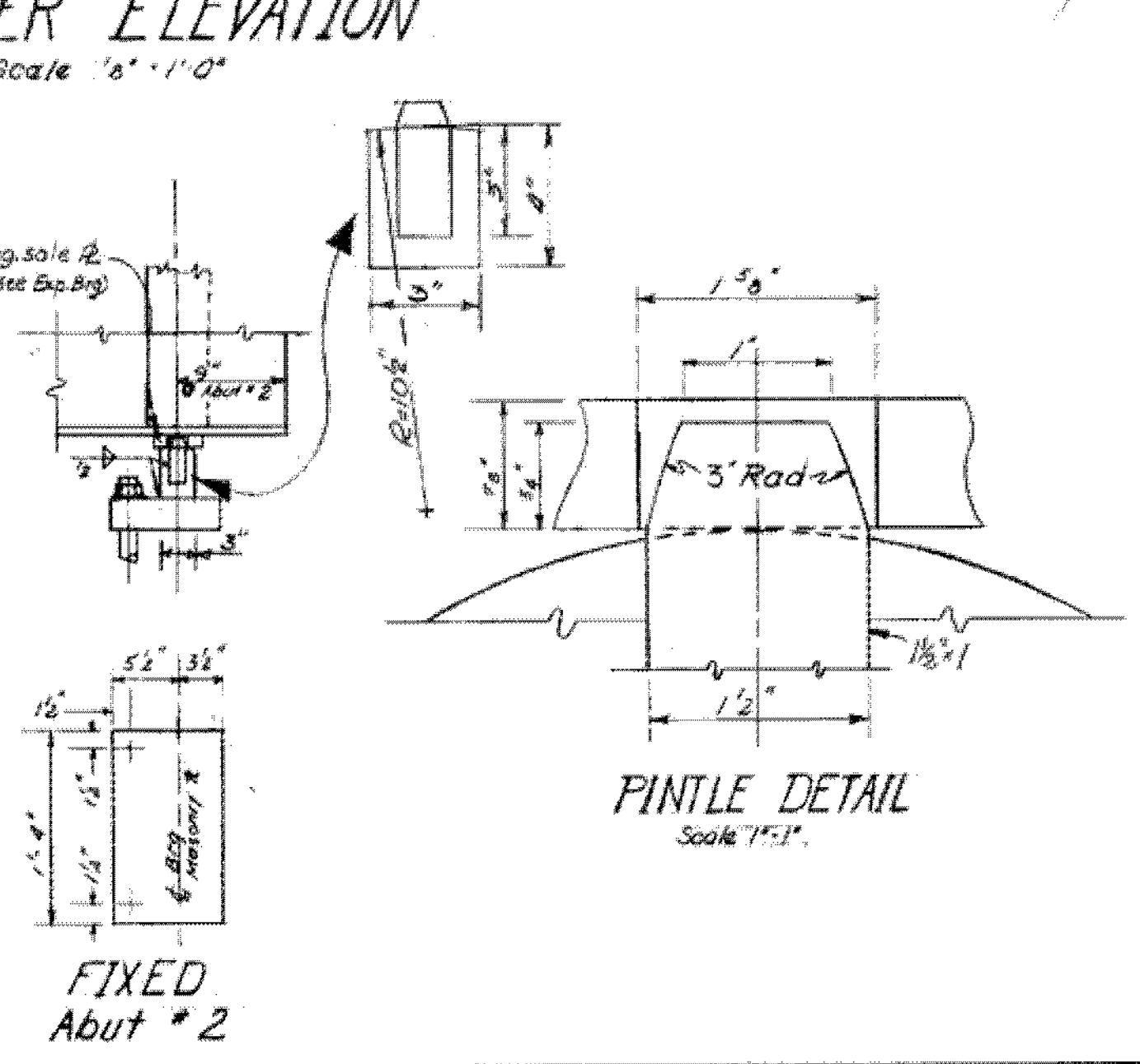
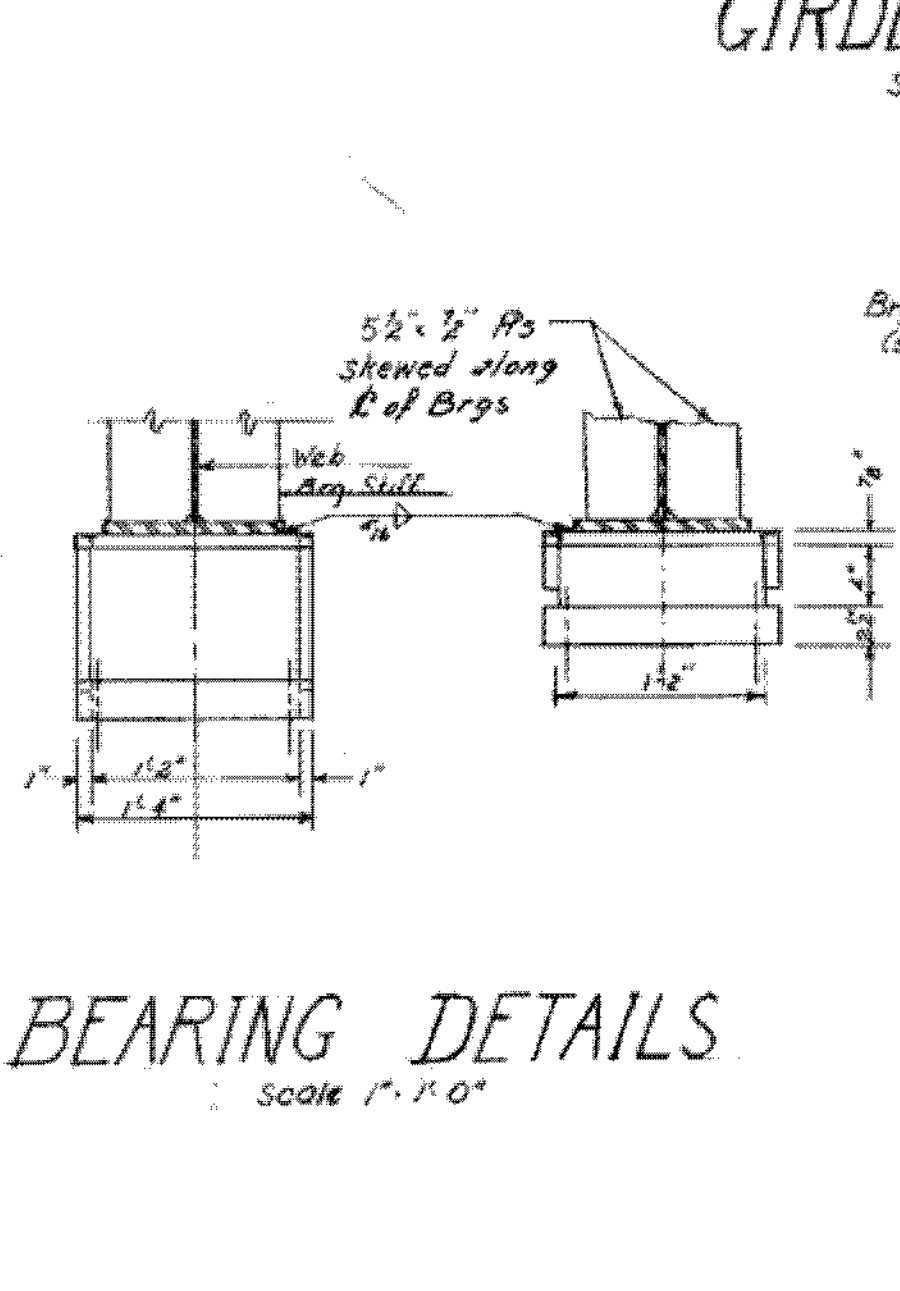
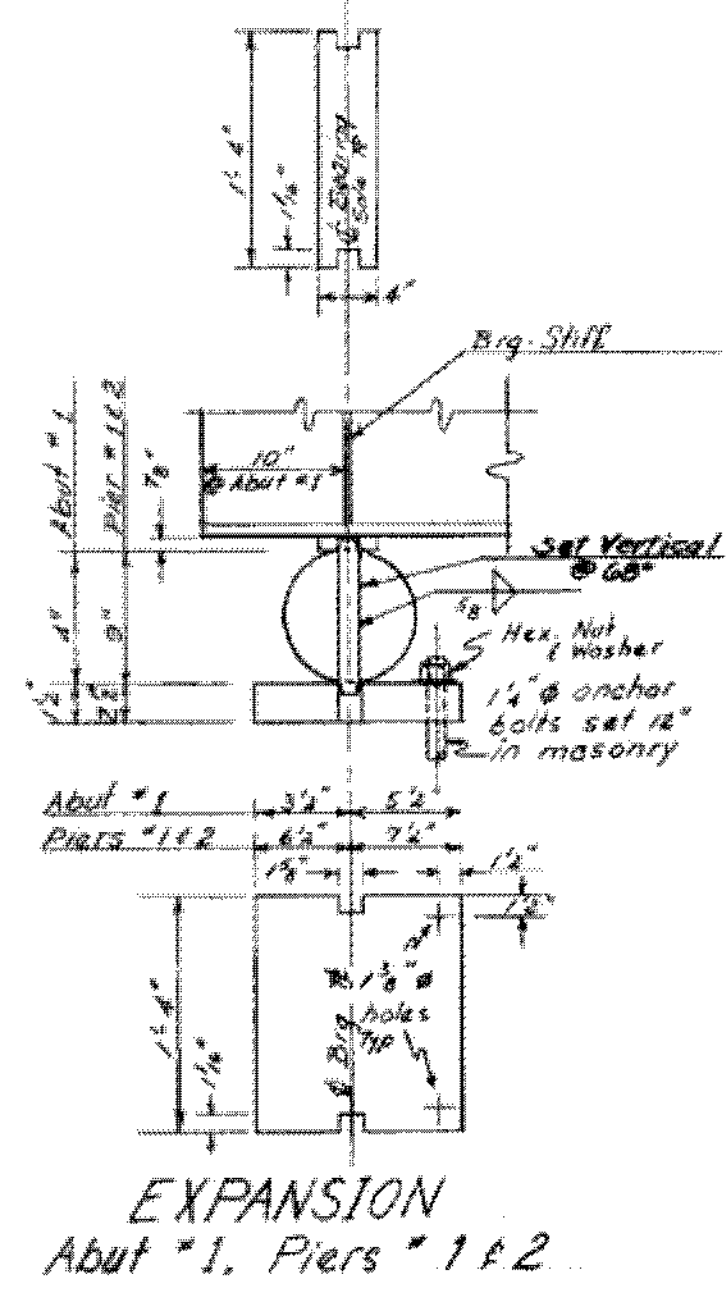
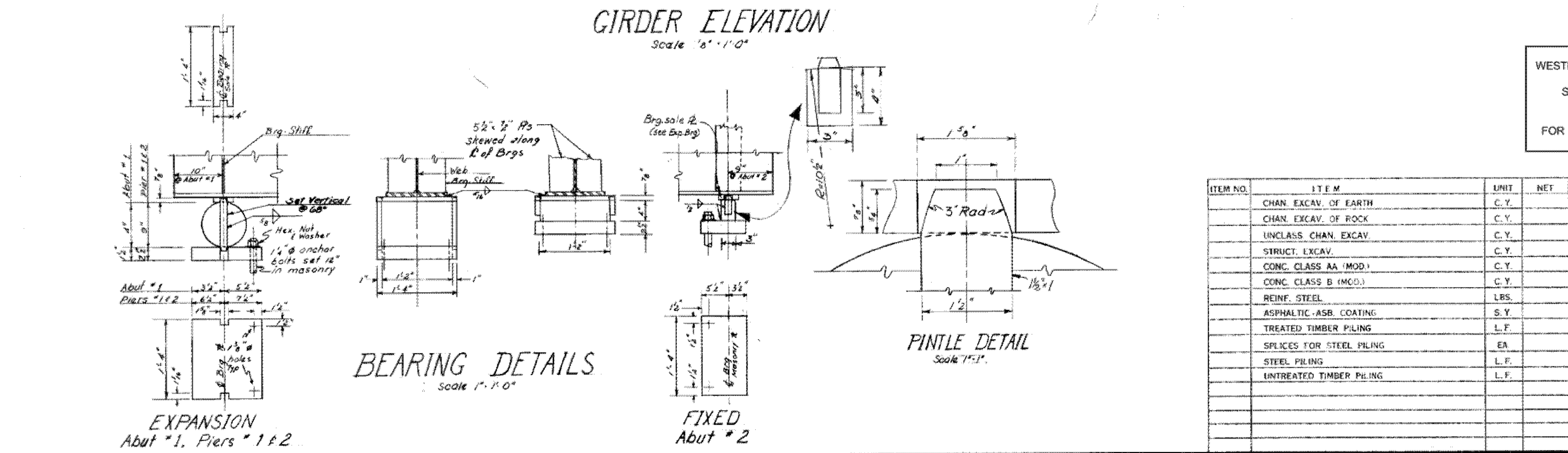


- NOTES**
- Plates for expansion bearings shall be high yield strength structural alloy steel (A414). Steel for rollers shall be cold finished carbon steel ASTM A108 (Grade 1045) turned and polished. Rollers shall be preheated in furnace to 400 F. field of this temp. until welding is completed, and then allowed to cool slowly. Side bars shall be ASTM A36. Plates shall be straightened to plane surfaces.
 - All steel for fixed bearings shall be ASTM A-36.
 - All bolts shall be 3/4" diameter high yield strength bolts, and shall conform to ASTM A 325.
 - In lieu of the above pouring sequence the slab may be placed in one continuous pour, under the direction of the Engineer, using a retarding admixture for concrete meeting the requirements of the General Special Provisions as specified under Concrete Item 401, Section 401.02-H, General.

WESTMINSTER-NORWICH
IM BPNT (8)
SHEET 15 OF 58
BRIDGE 39
FOR REFERENCE ONLY



PINTLE DETAIL Scale 7/8" = 1'-0"

ITEM NO.	ITEM	UNIT	NET	TOTAL	FINAL
	CHAN. EXCAV. OF EARTH	C.Y.			
	CHAN. EXCAV. OF ROCK	C.Y.			
	UNCLASS. CHAN. EXCAV.	C.Y.			
	STRUCT. EXCAV.	C.Y.			
	CONC. CLASS AA (MOD.)	C.Y.			
	CONC. CLASS B (MOD.)	C.Y.			
	REINF. STEEL	LBS.			
	ASPHALTIC-ASB. COATING	S.Y.			
	TREATED TIMBER PILING	L.F.			
	SPLICES FOR STEEL PILING	EA			
	STEEL PILING	L.F.			
	UNTREATED TIMBER PILING	L.F.			

STATE OF VERMONT
DEPARTMENT OF HIGHWAYS
TOWN OF HARTLAND-HARTFORD
ROUTE No. 191 STA. 3510
INTERSTATE OVER U.S. #5
FRAMING PLAN & BEARING DETAILS
SCALE As Noted
SURVEYED BY
DRAWN BY DHR CHECKED BY RWK
PROJECT No. I 91-1 (22) Cont. 4
SHEET 14 OF 103