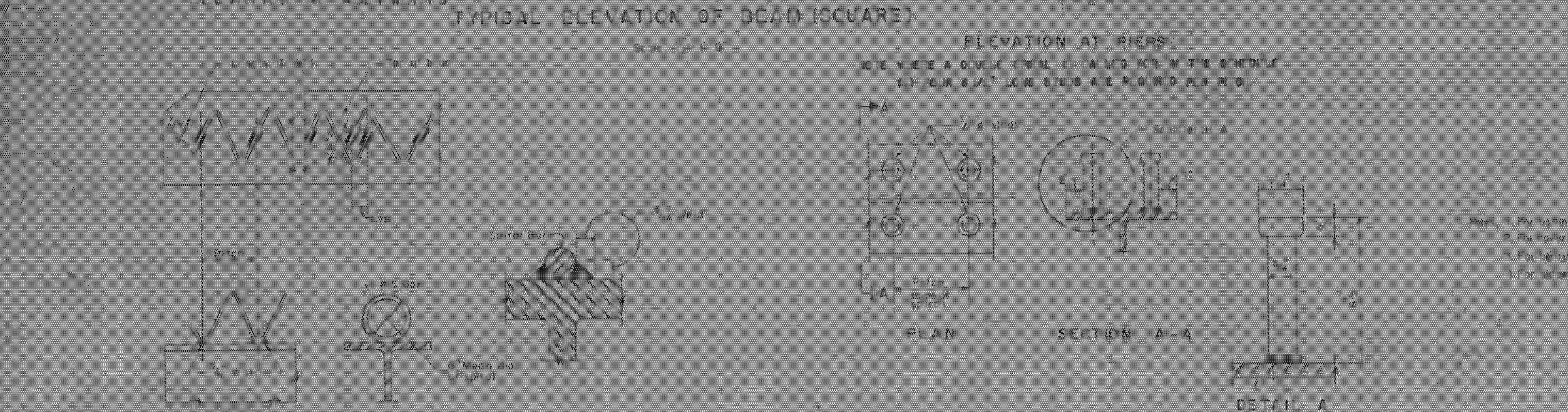
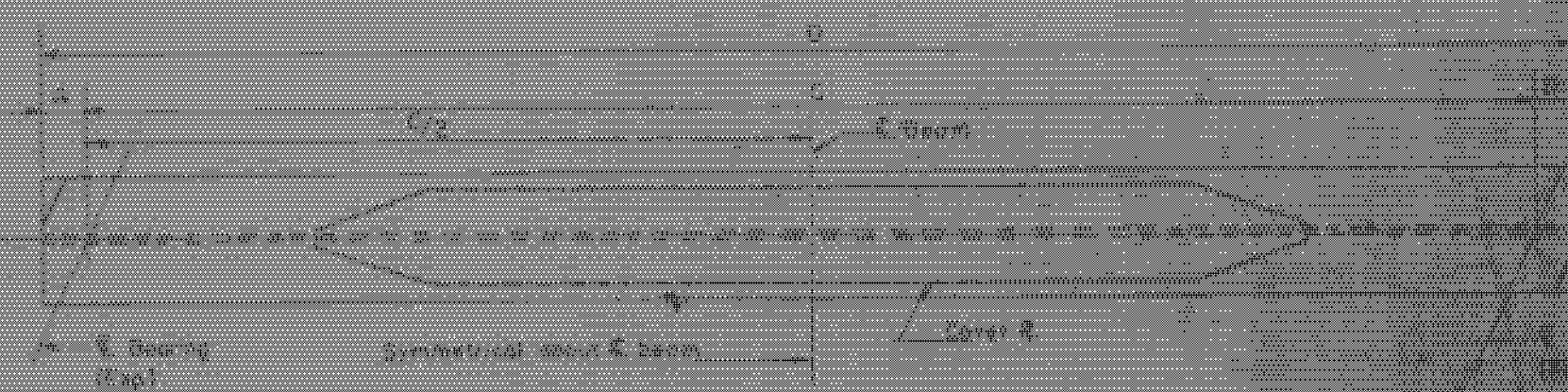
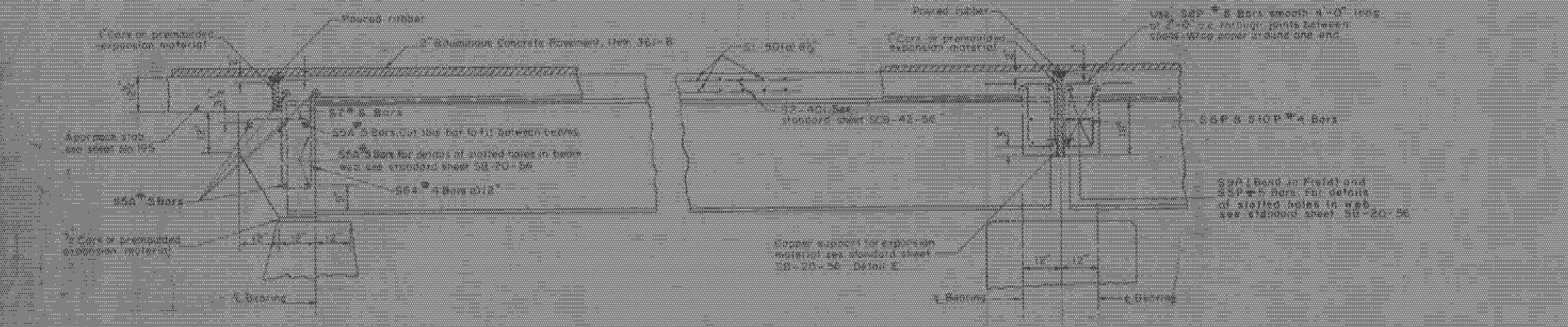
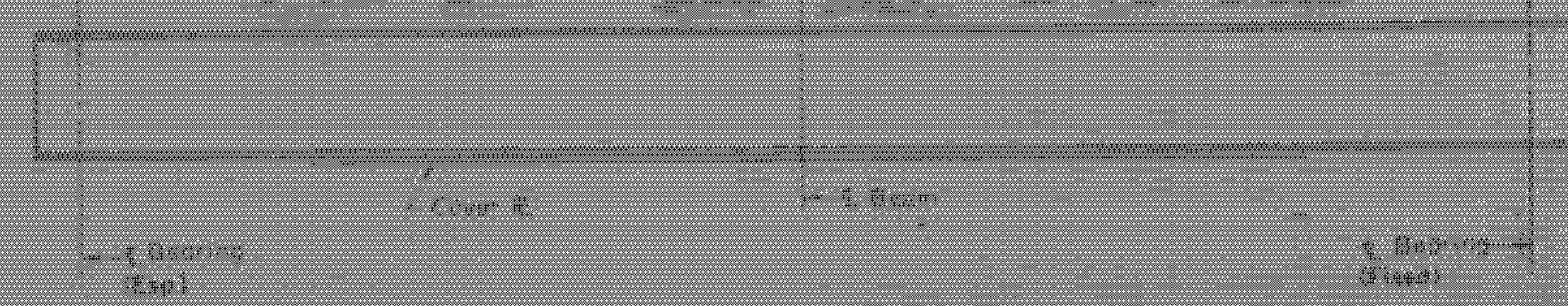
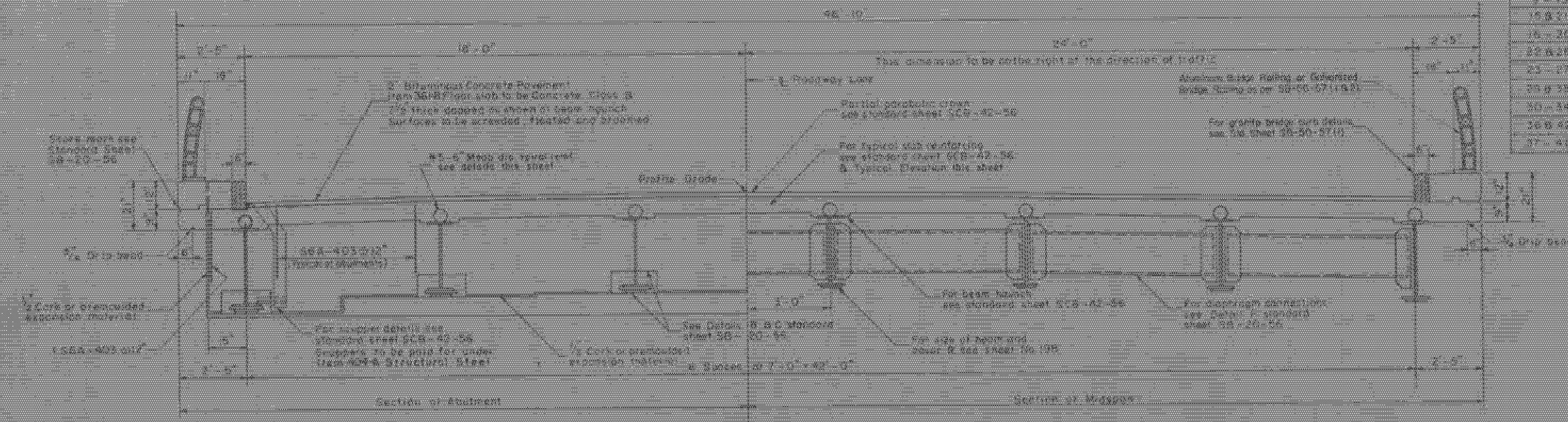


BEAM SCHEDULE				
BEAM NO.	A	B	C	D
1-6	3'	11 1/2'	38'-0"	38'-2 1/2"
2-6	9'	8'	38'-0"	38'-0"
3-6	11 1/2'	13 1/2'	38'-4"	38'-8"
4-13	9'	9'	38'-0"	38'-0"
5-21	11 1/2'	9'	38'-0"	38'-6 1/2"
6-20	9'	8'	38'-0"	38'-0"
7-17	9'	8'	38'-0"	38'-0"
8-33	9 1/2'	8'	42'-0"	42'-3 1/2"
9-34	9'	9'	42'-0"	42'-0"
10-42	8 1/2'	9'	40'-3"	41'-0 1/2"
11-41	8'	9'	40'-3"	41'-3"

SPIRAL SCHEDULE				
LENGTH OF SPAN	33'	44'	48'	58'
SPIRAL PITCH 0'-10" FROM OHN DOUBLE @ 8"	DOUBLE @ 8"	DOUBLE @ 8"	DOUBLE @ 8"	DOUBLE @ 8"
10'-20" ON A SPAN	4"	DOUBLE @ 7 1/2"	DOUBLE @ 8"	DOUBLE @ 8"
20'-30" ON A SPAN		7 1/2"	8"	8"



ITEM NO.	DESCRIPTION	UNIT	RIGHT LANE		LEFT LANE	
			NET	OVER-RUN TOTAL	NET	OVER-RUN TOTAL
401-R	Blended Concrete Pavement	Tons	485	485	485	485
402-B	Concrete Class B (Class I)	CY	430	430	430	430
402	Reinforcing Steel	Lbs		222		222
403	Spiral Reinforcement (6#20 LB)	Lbs		17		17
404-R	Structural Steel	Lbs	120750	2110	120750	2110

- For beam and cover B sizes, use Forming Iron Steel No 190
- For cover B details see Standard Sheet SCB-42-56
- For lagging details see Standard Sheet SB-20-55
- For sidewalk centering see Standard Sheet SCB-42-56

WESTMINSTER-NORWICH
IM BPNT (8)
SHEET 11 OF 58
BRIDGE 18
FOR REFERENCE ONLY

**IR-DECK(26)
BR 18N8S
THIS SHEET FOR
INFORMATION ONLY**

STRUCTURAL STEEL DETAIL
STATE OF VERMONT
DEPARTMENT OF HIGHWAYS
INTERSTATE PROJECT in the town of
WESTMINSTER
INTERSTATE STA 1500+12.85
SA 4 (RELOCATED) STA 1500+12.85
THE CLARENCE F. BRONKHORST CO.
CONSTRUCTION ENGINEERS
100 W. 10th St. Burlington, VT 05401
TELEPHONE 248-1111