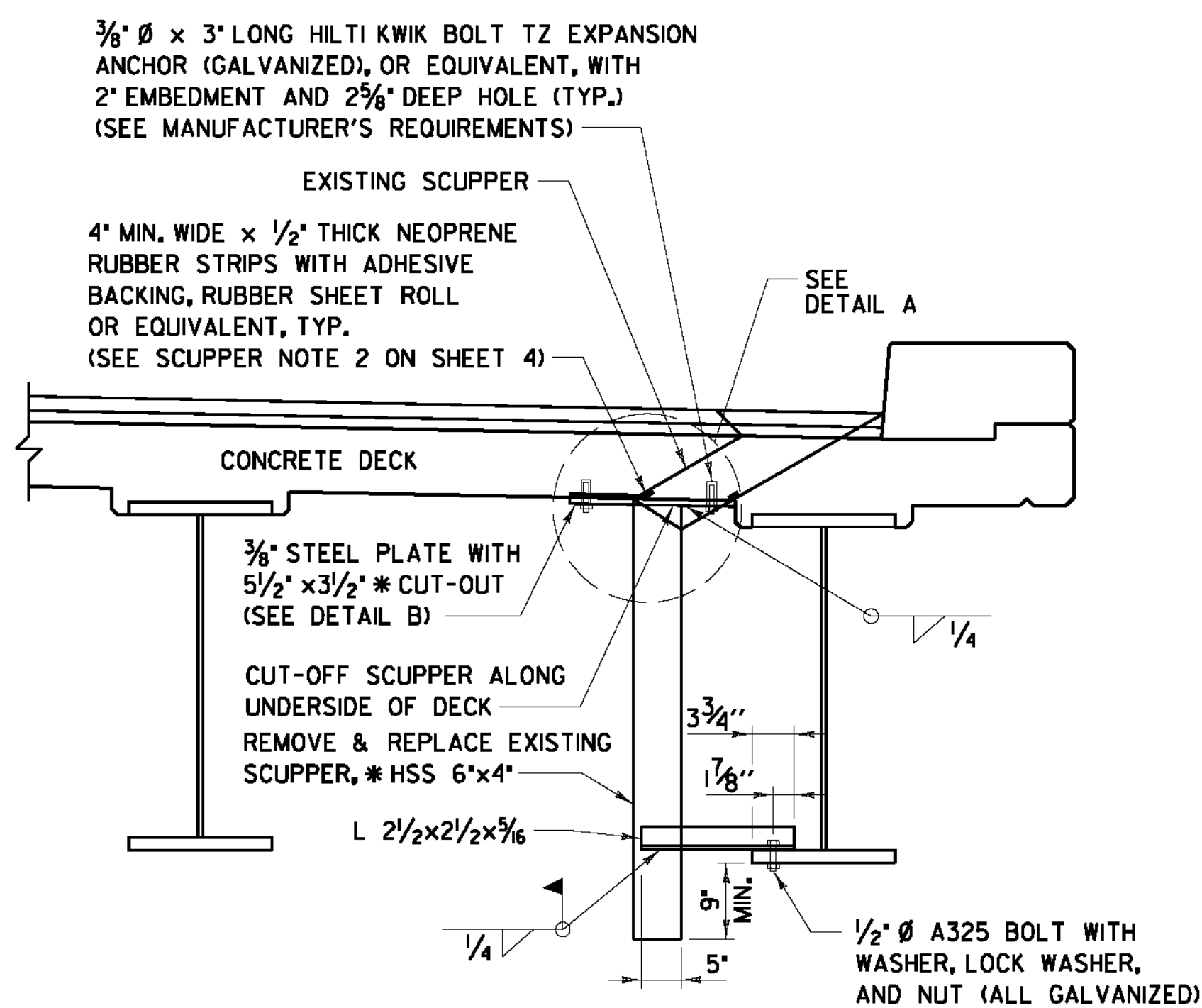


NOTES:

1. DRAIN TUBE EXTENSION DETAIL TO BE USED WHERE THE END OF EXISTING TUBES ARE LESS THAN 6" BELOW ADJACENT BEAM AS DIRECTED BY THE RESIDENT ENGINEER.
2. IF EXISTING DRAIN TUBE IS TOO SHORT TO PROVIDE AN ADEQUATE CONNECTION, THE CONTRACTOR SHALL COMPLETELY FILL THE TUBE WITH POLYURETHANE SEALANT CONFORMING TO SUBSECTION 707.05. TUBES TO BE FILLED WITH POLYURETHANE SEALANT SHALL BE APPROVED BY THE ENGINEER PRIOR TO BEING FILLED.

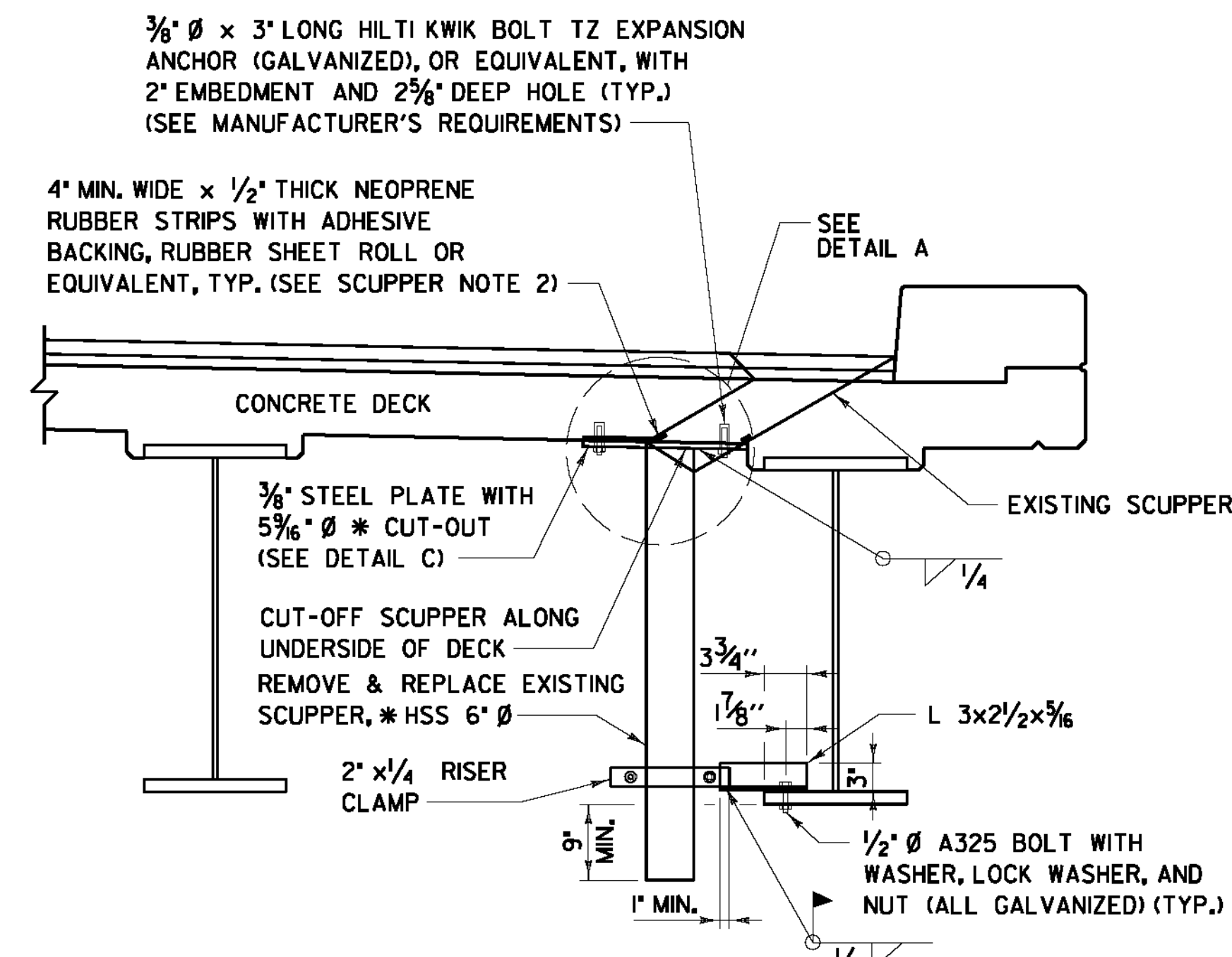
DRAIN TUBE EXTENSION DETAIL

NOT TO SCALE



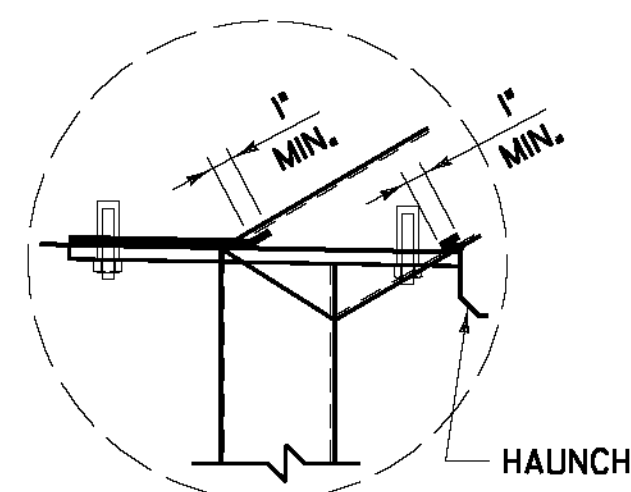
RECTANGULAR SCUPPER REPLACEMENT DETAIL

NOT TO SCALE



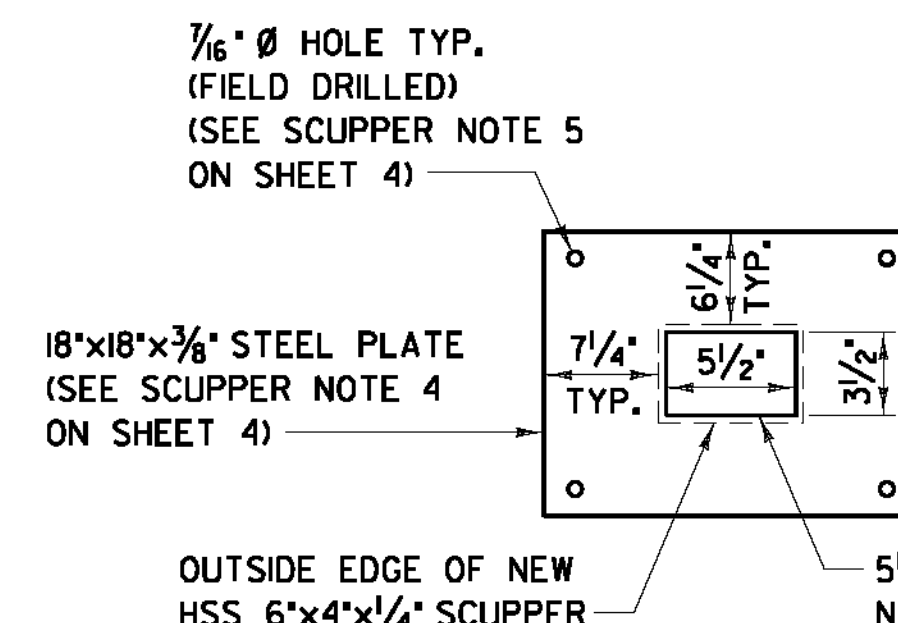
ROUND SCUPPER REPLACEMENT DETAIL

NOT TO SCALE



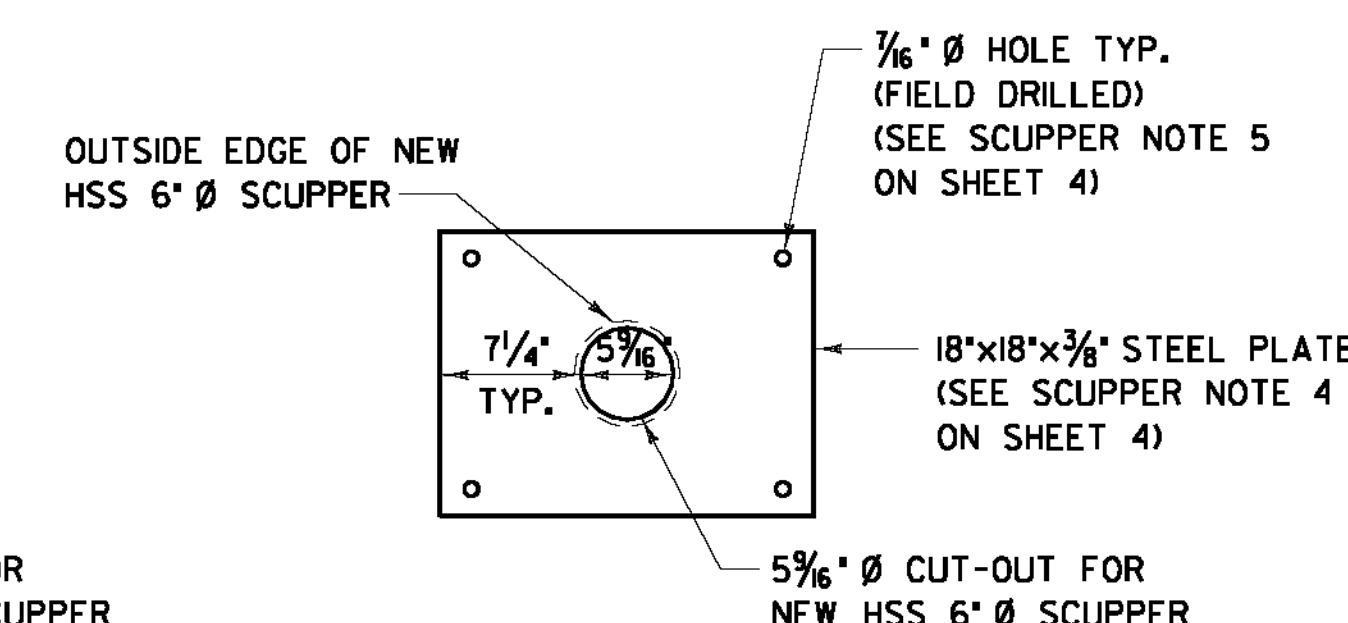
DETAIL A

NOT TO SCALE



DETAIL B *

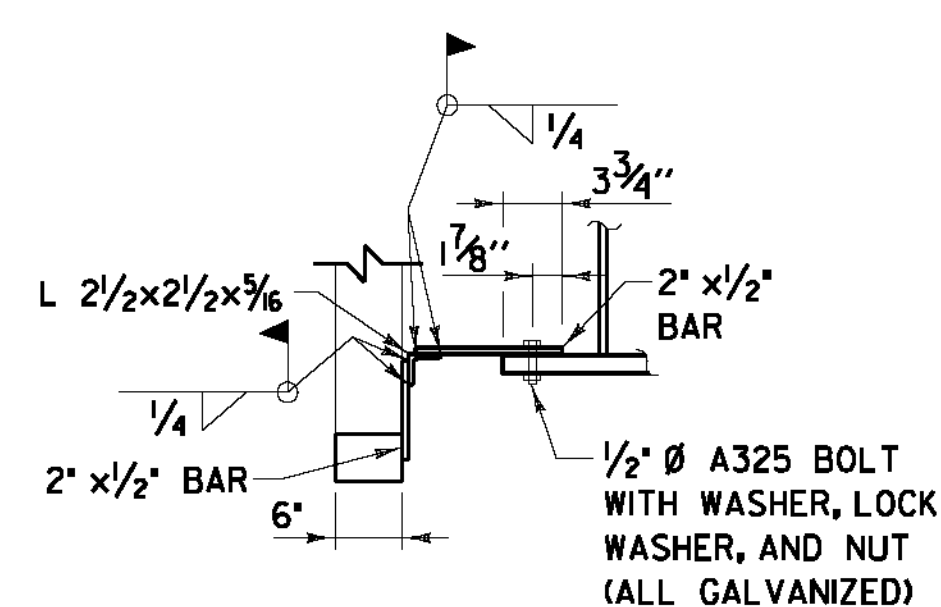
NOT TO SCALE



DETAIL C *

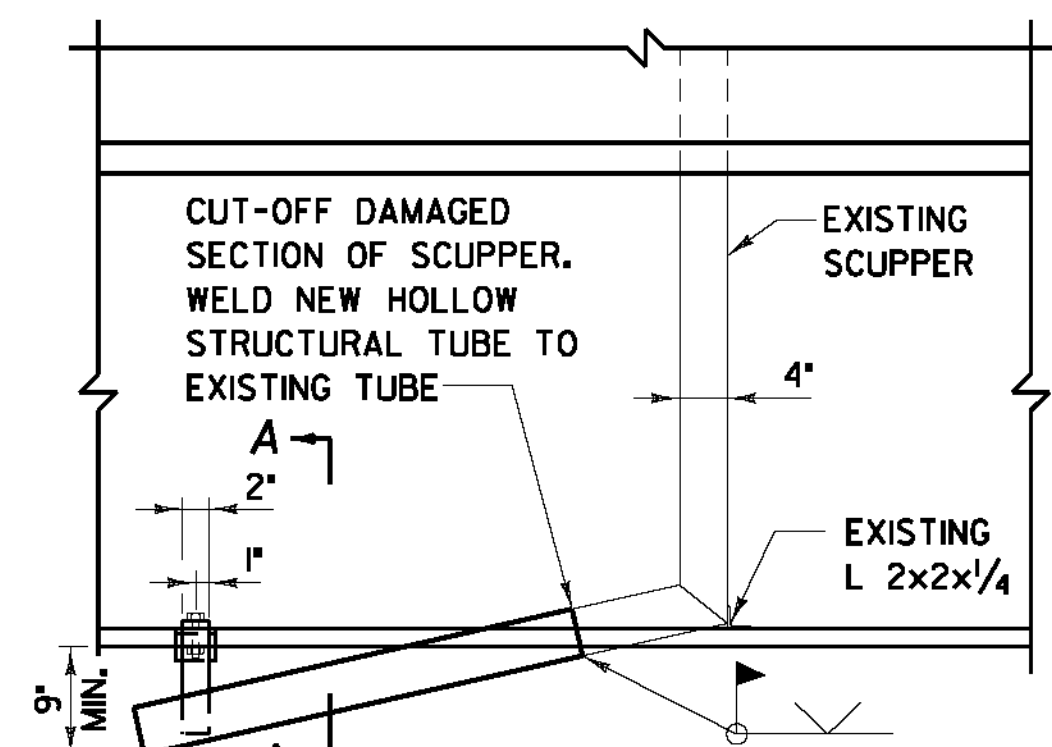
NOT TO SCALE

* EXISTING SCUPPER SIZES TO BE VERIFIED BY CONTRACTOR
SCUPPER PLATE MAY REQUIRE ADDITIONAL RESIZING IN THE FIELD



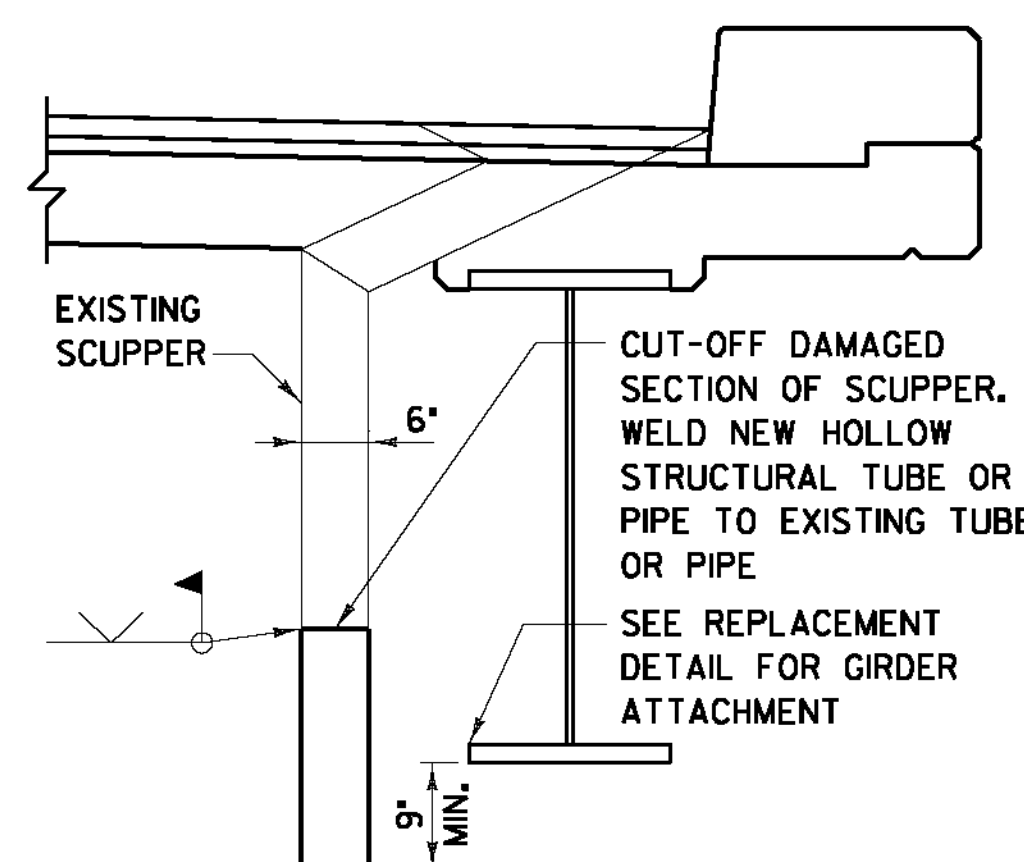
VIEW A-A

NOT TO SCALE



SCUPPER REPAIR DETAIL FOR ANGLED TUBING

(BRIDGES NO. 18 N&S ONLY)
NOT TO SCALE



SCUPPER REPAIR DETAIL

NOT TO SCALE