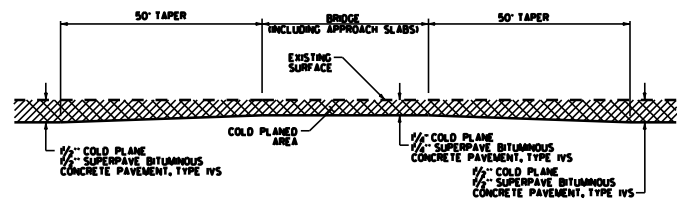
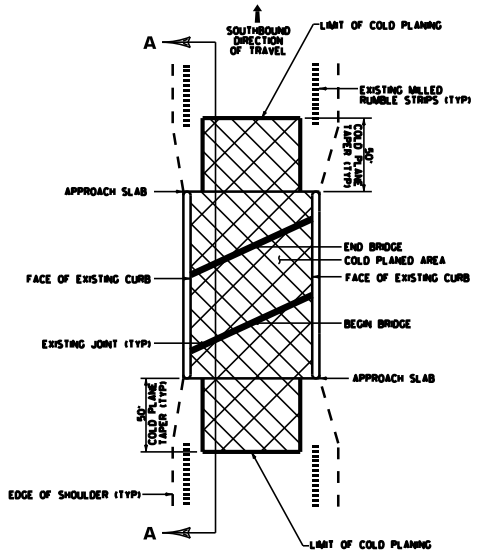


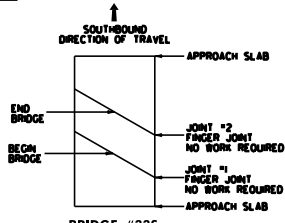
BRIDGE COLD PLANE TYPICAL SECTION A-A - ALTERNATE A



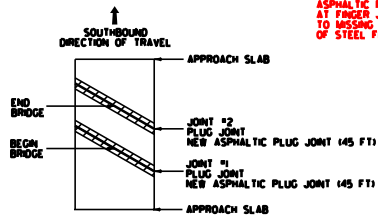
BRIDGE COLD PLANE TYPICAL SECTION A-A - ALTERNATE B



BRIDGE COLD PLANE TYPICAL PLAN



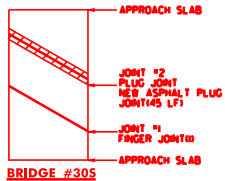
BRIDGE #335  
MM 55.430 - NO WORK @  
BR 335



BRIDGE #345  
MM 57.395 - NO WORK @  
BR 345

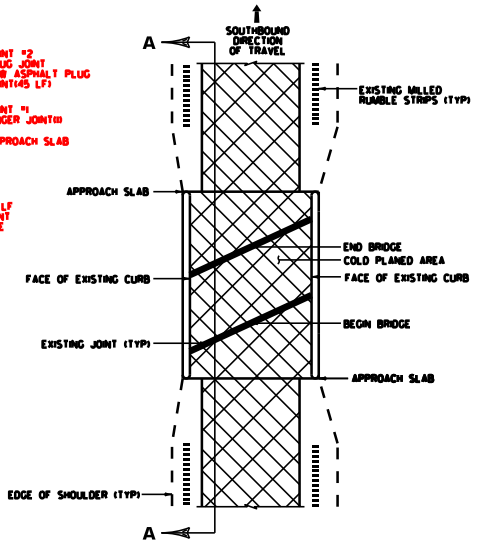
**LEGEND**  
 EXISTING BRIDGE JOINTS TO BE REPAIRED WITH ASPHALT PLUG JOINT

- NOTES:**
1. REFER TO ASPHALTIC PLUG JOINT AND DETAILS. ALL NEW JOINTS TO BE PAID FOR UNDER ITEM 560.0, BRIDGE EXPANSION JOINT, ASPHALTIC PLUG.
  2. THE CONTRACTOR SHALL TAKE PRECAUTIONS TO AVOID DAMAGING DRAINAGE STRUCTURES AND EXPANSION JOINTS. ANY DAMAGE CAUSED BY THE CONTRACTOR SHALL BE REPAIRED BY THE CONTRACTOR AT THE EXPENSE OF THE CONTRACTOR.
  3. THE CONTRACTOR SHALL TAKE PRECAUTIONS TO AVOID THE ACCUMULATION OF DEBRIS IN THE DRAINAGE STRUCTURES LOCATED AT CURB LINE AND IN THE EXPANSION JOINTS. THE CONTRACTOR SHALL EXAMINE THESE BRIDGE FEATURES ON A DAILY BASIS TO ENSURE THAT DEBRIS HAS NOT ACCUMULATED. ANY DEBRIS WHICH IS PRESENT SHALL BE REMOVED BY THE CONTRACTOR AT NO COST TO THE STATE.



BRIDGE #305  
MM 54.403

**NOTE:** INSTALLED 45 LF ASPHALTIC PLUG JOINT AT FINGER JOINT DUE TO MISSING SECTION OF STEEL FINGERS



BRIDGE COLD PLANE TYPICAL PLAN - ALTERNATE B

NOT TO SCALE

|                                    |  |
|------------------------------------|--|
| <b>BRIDGE<br/>DETAIL<br/>SHEET</b> | PROJECT NAME: <b>SPRINGFIELD - WINDSOR</b> |
|                                    | PROJECT NUMBER: <b>IM SURF (23)</b>        |
|                                    | FILE NAME: <b>0408...0408.dgn</b>          |
|                                    | DESIGNED BY: <b>MUNT</b>                   |
|                                    | PROJECT LEADER: <b>MUNT</b>                |
|                                    | DRAWN BY: <b>MUNT</b>                      |
|                                    | CHECKED BY: <b>PAVY MUNT</b>               |
|                                    | SPAWN FILE NAME: <b>0408.04J</b>           |
|                                    | PLOT DATE: <b>23-MAY-2002 09:00</b>        |
|                                    | SHEET <b>4</b> OF <b>8</b>                 |