

CAST-IN-PLACE CONCRETE CURB, TYPE B  
 STA 1987+59 LT - 1987+99 LT  
 STA 1987+73 RT - 1988+13 RT  
 STA 1989+07 LT - 1989+47 LT  
 STA 1989+21 RT - 1989+61 RT

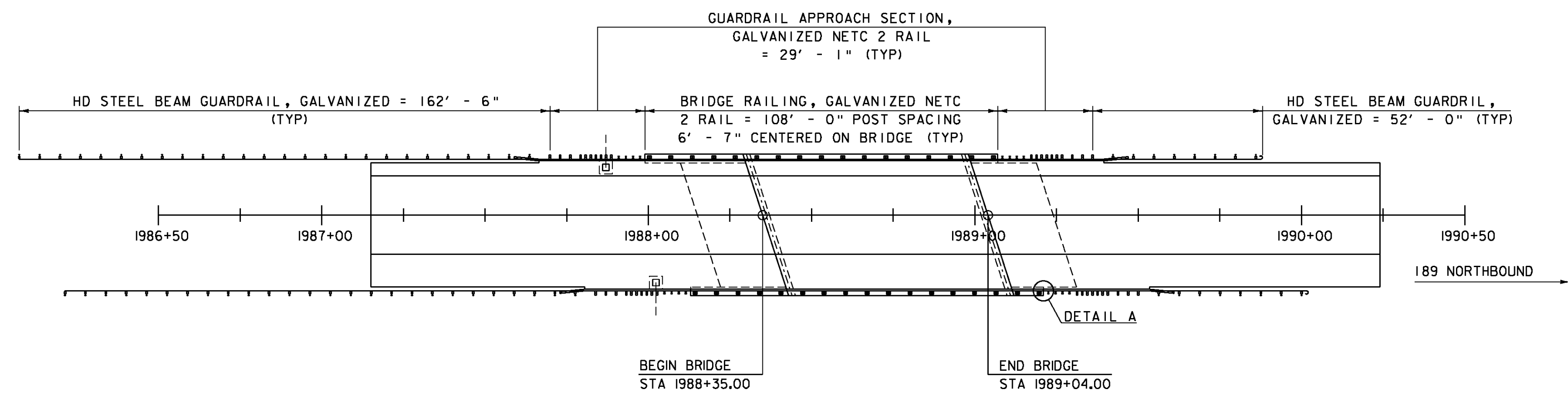
REMOVAL AND DISPOSAL OF GUARDRAIL  
 STA 1986+07 LT - 1987+99 LT  
 STA 1986+21 RT - 1988+13 RT  
 STA 1989+07 LT - 1989+88 LT  
 STA 1989+21 RT - 1990+02 RT

HD STEEL BEAM GUARDRAIL, GALVANIZED  
 STA 1986+07 LT - 1987+70 LT  
 STA 1986+21 RT - 1987+84 RT  
 STA 1989+36 LT - 1989+88 LT  
 STA 1989+50 RT - 1990+02 RT

GUARDRAIL APPROACH SECTION, GALVANIZED NETC 2 RAIL  
 STA 1987+70 LT - 1987+99 LT  
 STA 1987+84 RT - 1988+13 RT  
 STA 1989+07 LT - 1989+36 LT  
 STA 1989+21 RT - 1989+50 RT

BRIDGE RAILING, GALVANIZED NETC 2 RAIL  
 STA 1987+99 LT - 1989+07 LT  
 STA 1988+13 RT - 1989+21 RT

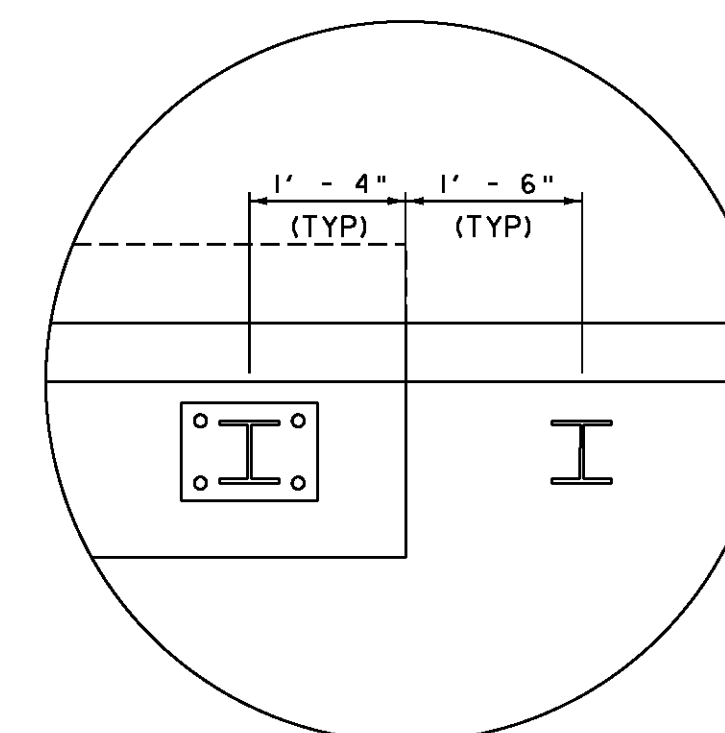
ANCHOR FOR STEEL BEAM RAIL  
 STA 1989+88 LT  
 STA 1990+02 RT



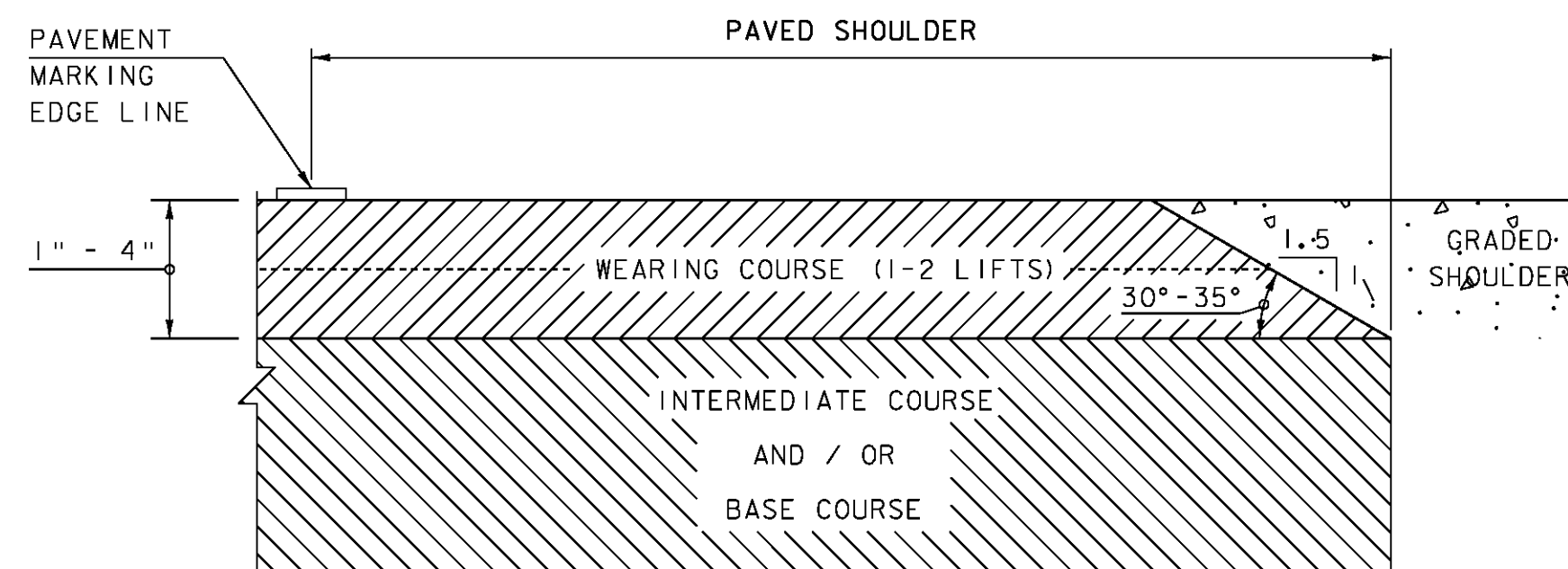
NOTE:  
 THE GUARDRAIL ON THE SOUTH END OF THE PROJECT WILL NEED TO BE MATCHED BACK INTO THE EXISTING GUARDRAIL.

RAILING SPLICES WILL BE NEEDED AT BEGIN AND END BRIDGE.

**RAILING LAYOUT**  
 SCALE: 1" = 20' - 0"



**DETAIL A**  
 NTS



**SAFETY EDGE DETAIL**  
 NOT TO SCALE

NOTE: LEVELING COURSE MAY INCLUDE THE "SAFETY EDGE" AT THE CONTRACTOR'S CHOICE.

PROJECT NAME: BROOKFIELD  
 PROJECT NUMBER: IM 089-I(59)

FILE NAME: s10a074rall.dgn  
 PROJECT LEADER: C.P. WILLIAMS  
 DESIGNED BY: H.J. SALLS  
 RAILING LAYOUT

PLOT DATE: 25-OCT-2011  
 DRAWN BY: H.J. SALLS  
 CHECKED BY: R.S. YOUNG  
 SHEET 11 OF 24