

1987+03 6 INCH WHITE LINE 1990+67
 STA 1987+15.00 RT - 1990+24.00 RT
 STA 1987+15.00 - 1990+24.00 CL (DASHED)
 1987+03 1990+67

6 INCH YELLOW LINE
 STA 1987+15.00 LT - 1990+24.00 LT
 1986+59 1990+55

MILLED RUMBLE STRIPS
 STA 1987+15.00 RT - 1988+22.00 RT
 STA 1989+32.00 RT - 1990+24.00 RT

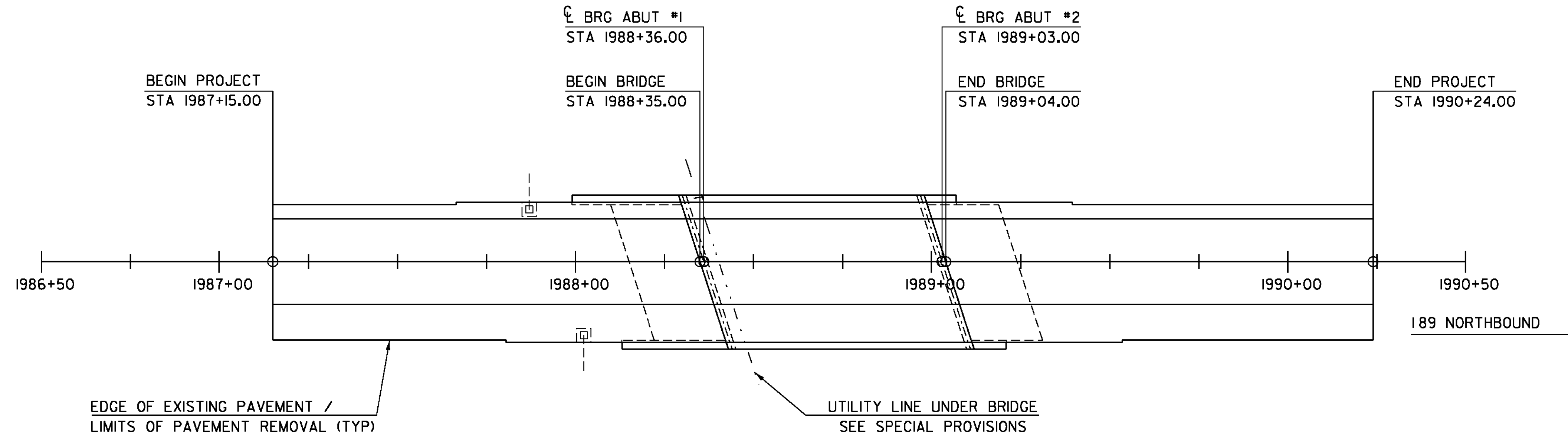
BRIDGE EXPANSION JOINT,
 ASPHALTIC PLUG
 STA 1989+04

SAW CUT JOINT
 STA 1988+15
 STA 1988+35
 STA 1989+24

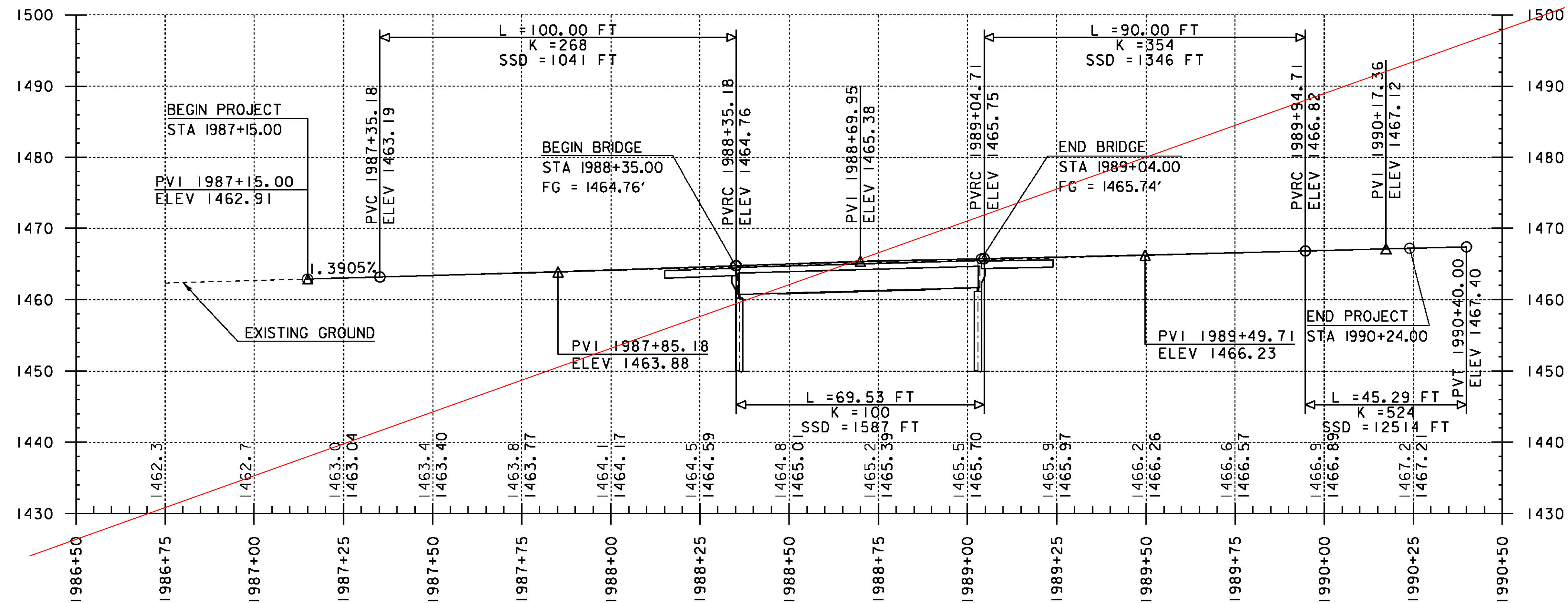
CHANGING ELEVATION OF DROP INLETS,
 CATCH BASINS, OR MANHOLES
 STA 1987+85 LT (EST.)
 STA 1988+05 RT (EST.)

ALL DRAINAGE FEATURES ARE SHOWN
 IN THEIR APPROXIMATE LOCATIONS AND
 WILL NEED TO BE LOCATED BY THE
 CONTRACTOR TO ENSURE THEY ARE NOT
 DAMAGED. ANY DAMAGE WILL BE REPAIRED
 AT THE CONTRACTOR'S EXPENSE.

PAYMENT FOR SAW CUTTING EXISTING
 PAVEMENT WILL BE CONSIDERED INCIDENTAL
 TO CONTRACT ITEM 210.10, 'COLD PLANING,
 BITUMINOUS PAVEMENT'.



LAYOUT
 SCALE: 1" = 20' - 0"



SEE 'LAYOUT AND PROFILE' FROM PROJECT
 MANAGER, CHRIS WILLIAMS, P.E.
 PLOT DATE : 5-9-2012, SHEET 1 OF 1

NOTE:
 ELEVATIONS SHOWN TO THE NEAREST TENTH ARE EXISTING GROUND ALONG CENTERLINE.
 ELEVATIONS SHOWN TO THE NEAREST HUNDREDTH ARE FINISH GRADE ALONG CENTERLINE.
 ALL ELEVATIONS ARE ASSUMED AND MUST BE VERIFIED.

PROFILE
 HORIZONTAL SCALE: 1" = 20' - 0"
 VERTICAL SCALE: 1" = 10' - 0"

PROJECT NAME: BROOKFIELD
 PROJECT NUMBER: IM 089-1(59)

FILE NAME: s10a074layout.dgn
 PROJECT LEADER: C.P. WILLIAMS
 DESIGNED BY: H.I. SALLS
 LAYOUT AND PROFILE

PLOT DATE: 02-DEC-2011
 DRAWN BY: H.I. SALLS
 CHECKED BY: R.S. YOUNG
 SHEET 6 OF 24