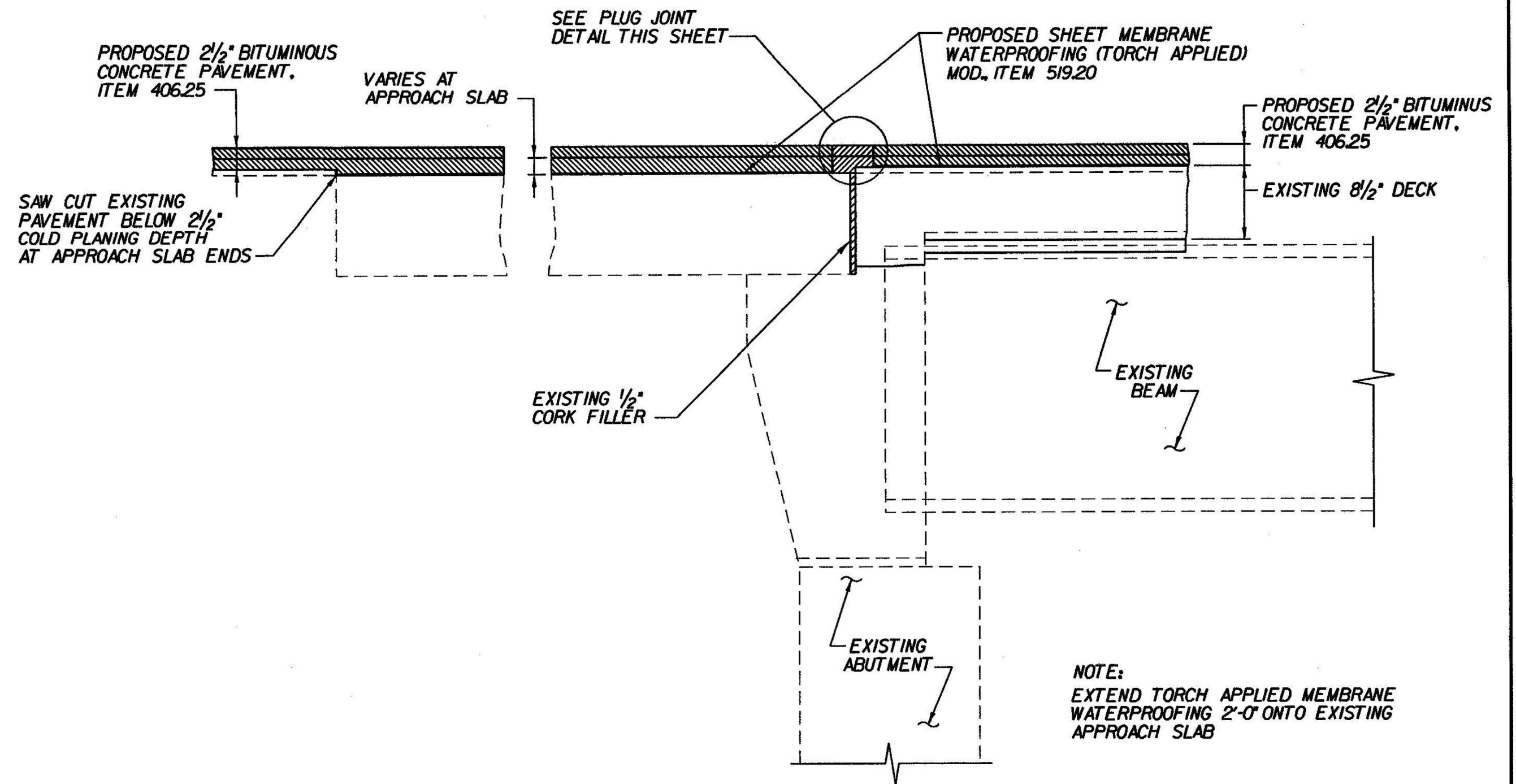
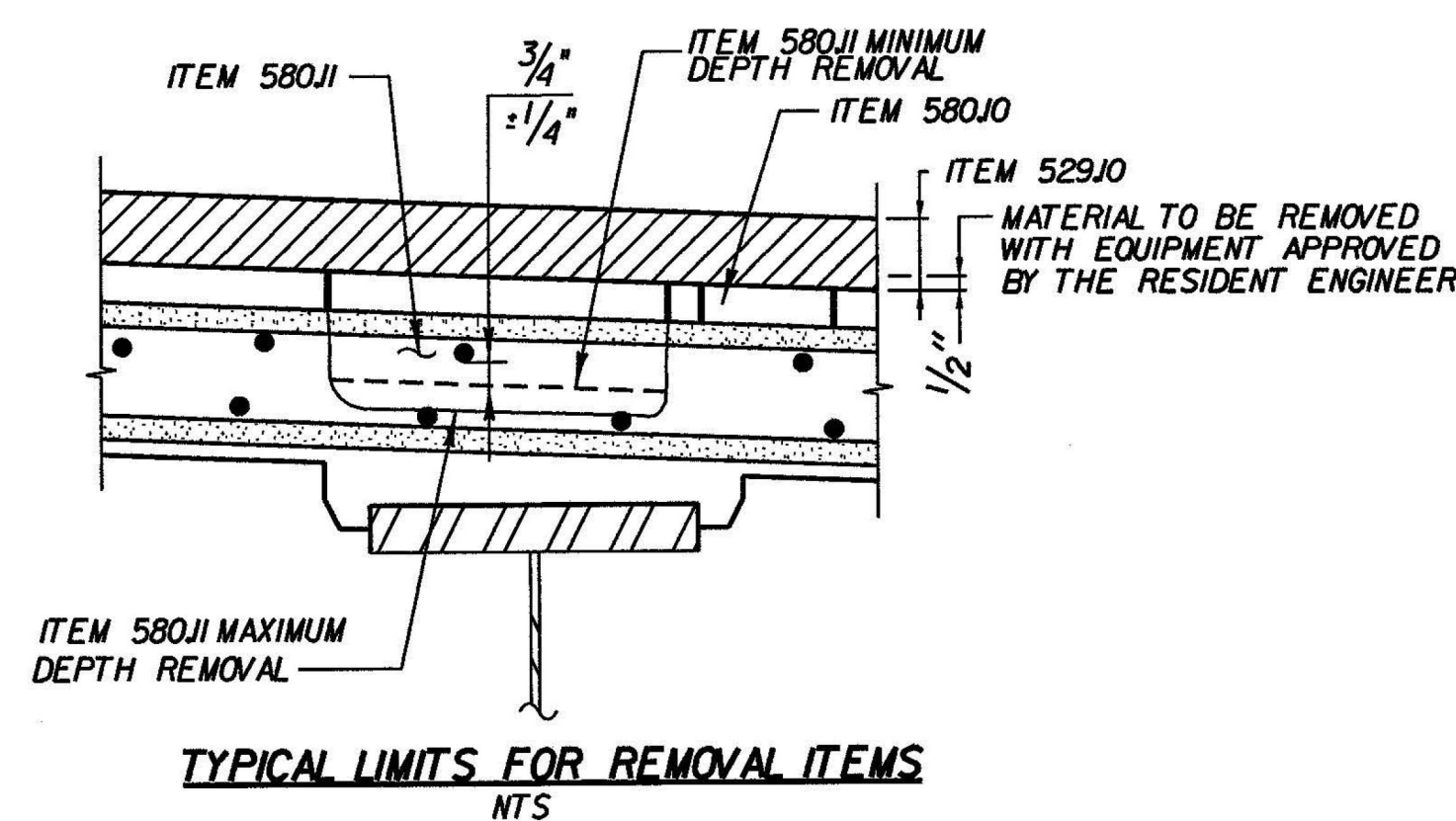
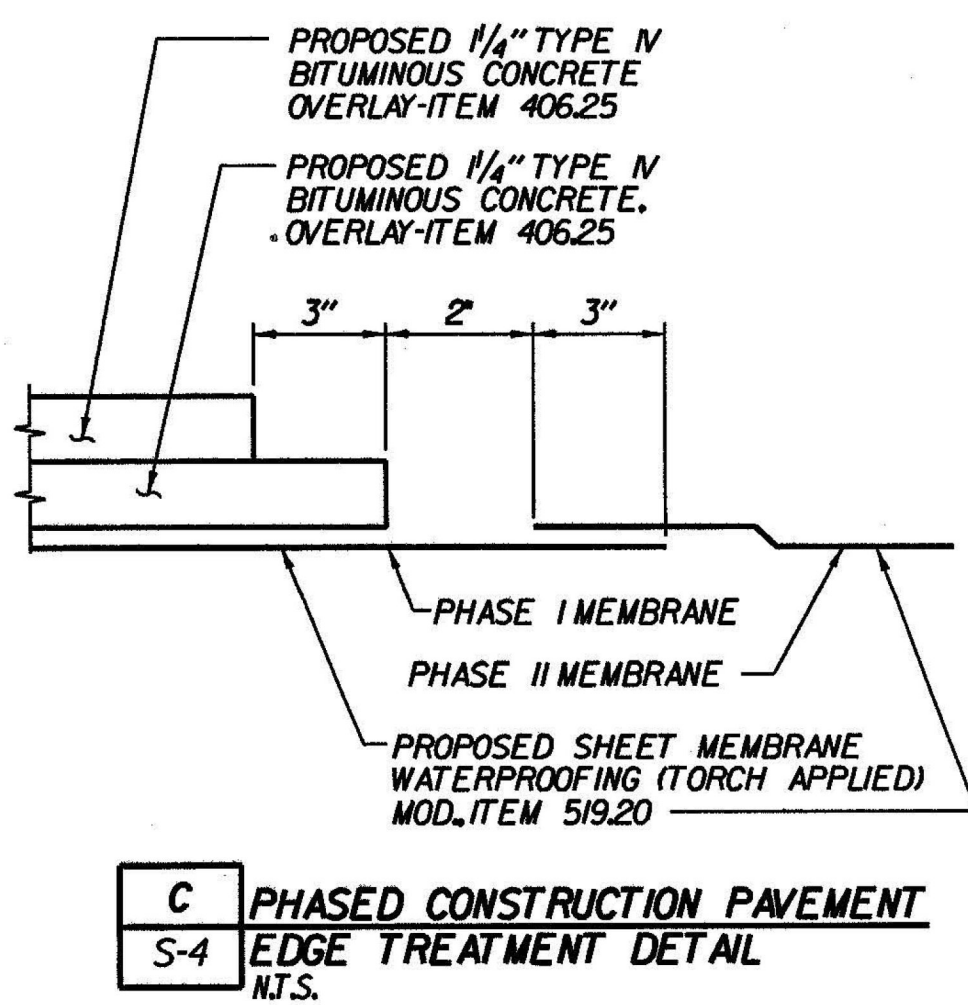


THE JOINT IS TO BE LOCATED ACCURATELY BY STRING LINING, OR OTHER MEANS, PRIOR TO PAVING, SO THAT THE SAW CUTS WILL BE MADE DIRECTLY OVER THE END OF THE CONCRETE DECK

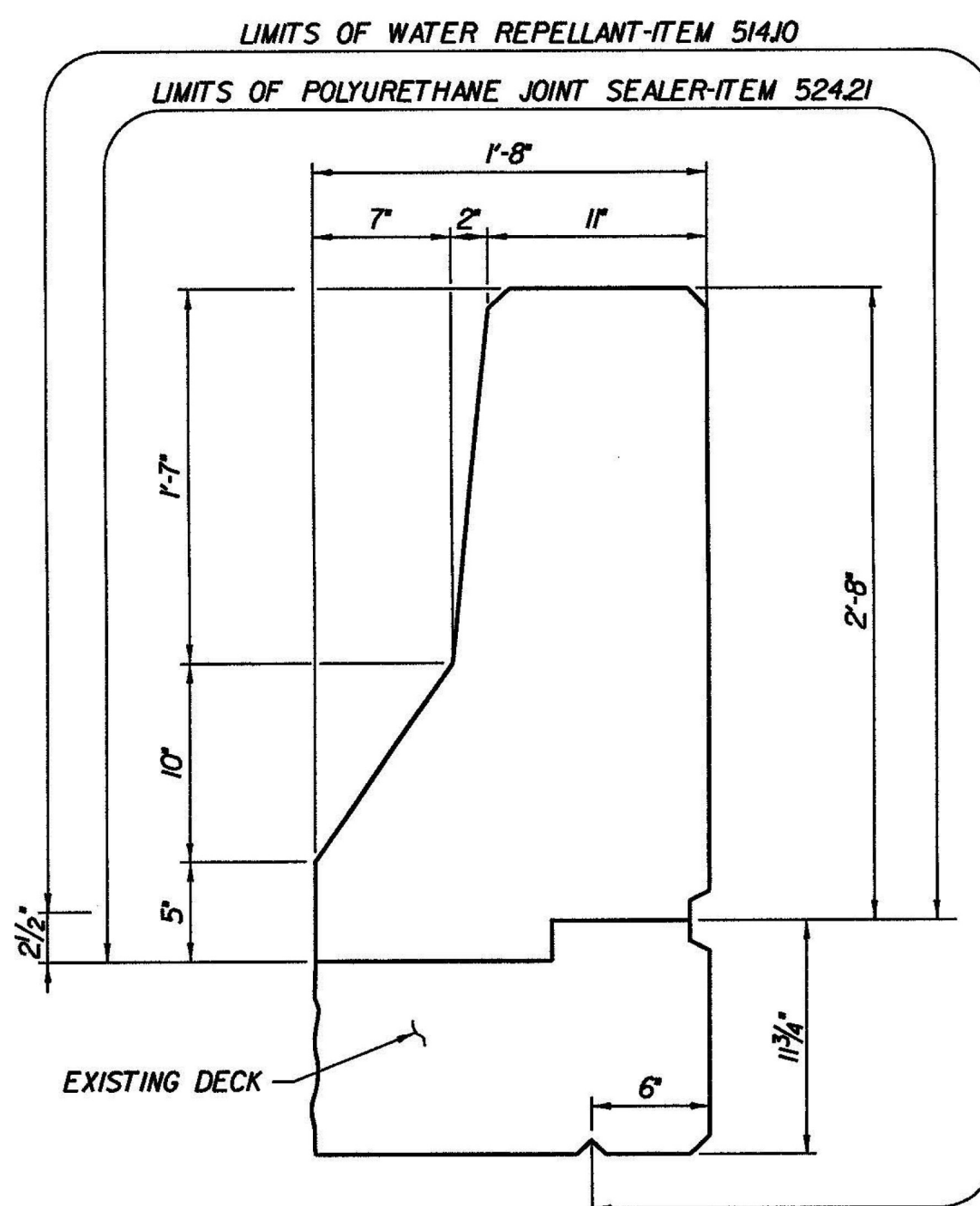


NOTE: EXTEND TORCH APPLIED MEMBRANE WATERPROOFING 2'-0\"/>

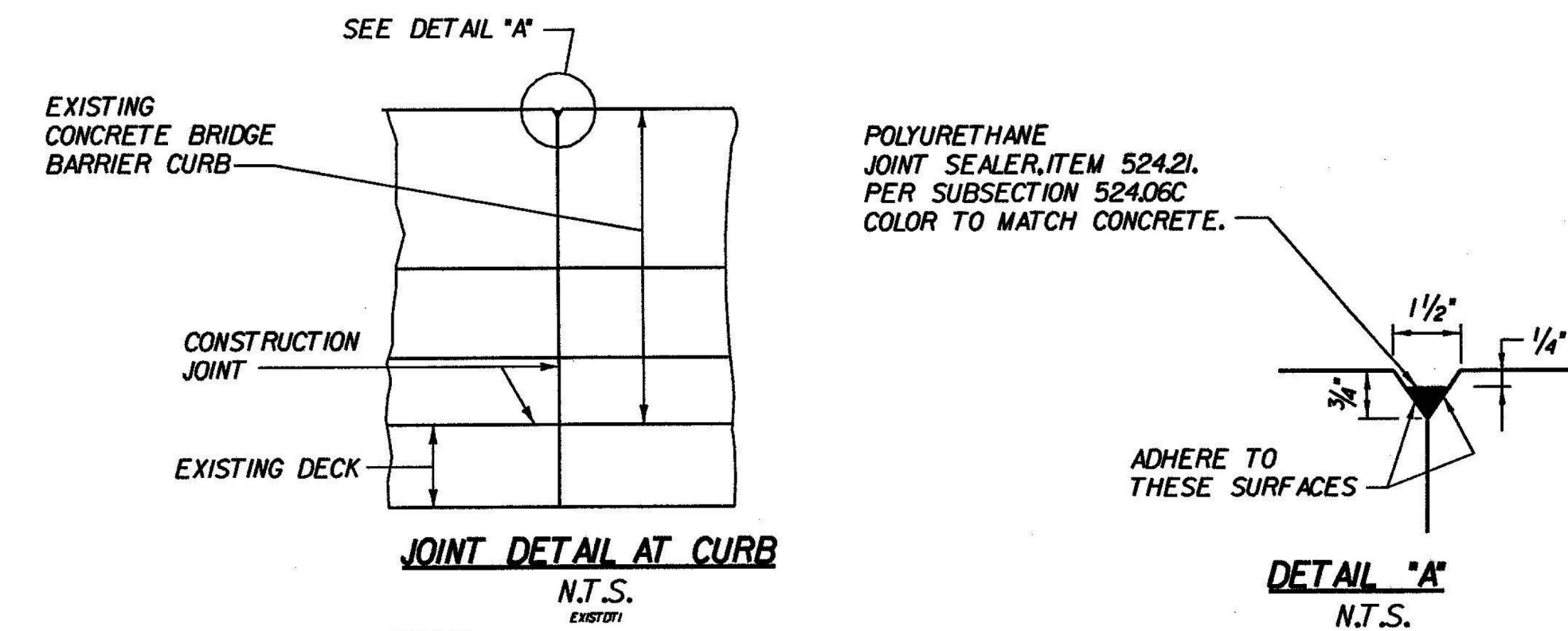


**DECK SLAB CONCRETE REMOVAL & REPAIR NOTES:**

1. ALL EDGES OF REPAIR AREAS ARE TO BE SAW CUT SQUARE AND A MINIMUM OF 1 INCH DEEP.
2. ITEM 580J0 \*REPAIR OF CONCRETE SUPERSTRUCTURE SURFACE CLASS I\* SHALL INCLUDE REMOVAL OF CONCRETE TO A MAXIMUM DEPTH AS DETERMINED BY THE TOP OF THE TOP BARS OF THE TOP MAT OF REINFORCING STEEL.
3. ITEM 580J1 \*REPAIR OF CONCRETE SUPERSTRUCTURE CLASS II\* SHALL INCLUDE REMOVAL OF CONCRETE TO A MAXIMUM DEPTH AS DETERMINED BY THE TOP OF THE TOP BARS OF THE BOTTOM MAT OF REINFORCING STEEL.
4. REMOVAL OF EXISTING CONCRETE TO A DEPTH GREATER THAN SPECIFIED FOR ITEM 580J1 SHALL BE PAID FOR UNDER ITEM 580J2 \*REPAIR OF CONCRETE SUPERSTRUCTURE SURFACE CLASS III\*
5. SEE ADDITIONAL NOTES ON BRO1.



**BARRIER SURFACE DETAIL**  
SCALE 1 1/2" = 1'-0"  
EXIST 01



- NOTES:
1. CONSTRUCTION JOINTS THROUGH CONCRETE CURBS ARE SPACED AT A MAXIMUM OF 20'-0" CENTER TO CENTER.
  2. REMOVAL AND DISPOSAL OF EXISTING JOINT SEALER IS INCLUDED IN ITEM 524.21, POLYURETHANE JOINT SEALER.

**STATE OF VERMONT AGENCY OF TRANSPORTATION**

Town Of	MONTPELIER	Bridge No.	42 S
Highway No.	1-89	Log Sta.	
PAVEMENT AND BARRIER DETAILS		Surv. Sta.	
INTERSTATE 89 OVER THE WOONSKIRIVER			
Designed By	DAS	Drawn by	WMW
Checked By	MWO	Bridge Design Supervisor	M.W. OLSTAD
PROJECT	MONTPELIER	Date	08/00
PROJECT NO.		IM 089-2(30)	
I.G.C. Info.			
Bridge Sheet No.	BR04	Sheet 6 OF 17	

ARCHIVED IN DPR

**CHA CLOUGH, HARBOUR & ASSOCIATES LLP**  
ENGINEERS, SURVEYORS, PLANNERS & LANDSCAPE ARCHITECTS  
WINNERS CIRCLE ALBANY, NEW YORK, 12205

MONTPELIER IM MEMB(23)  
SHEET 58 OF 63  
BRIDGE 42S  
FOR REFERENCE ONLY

USER: 1459