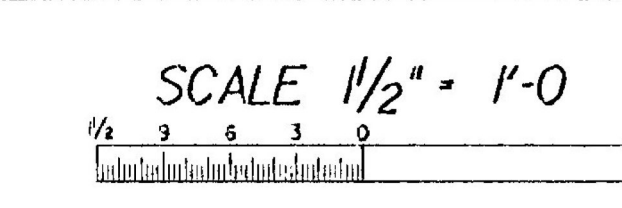
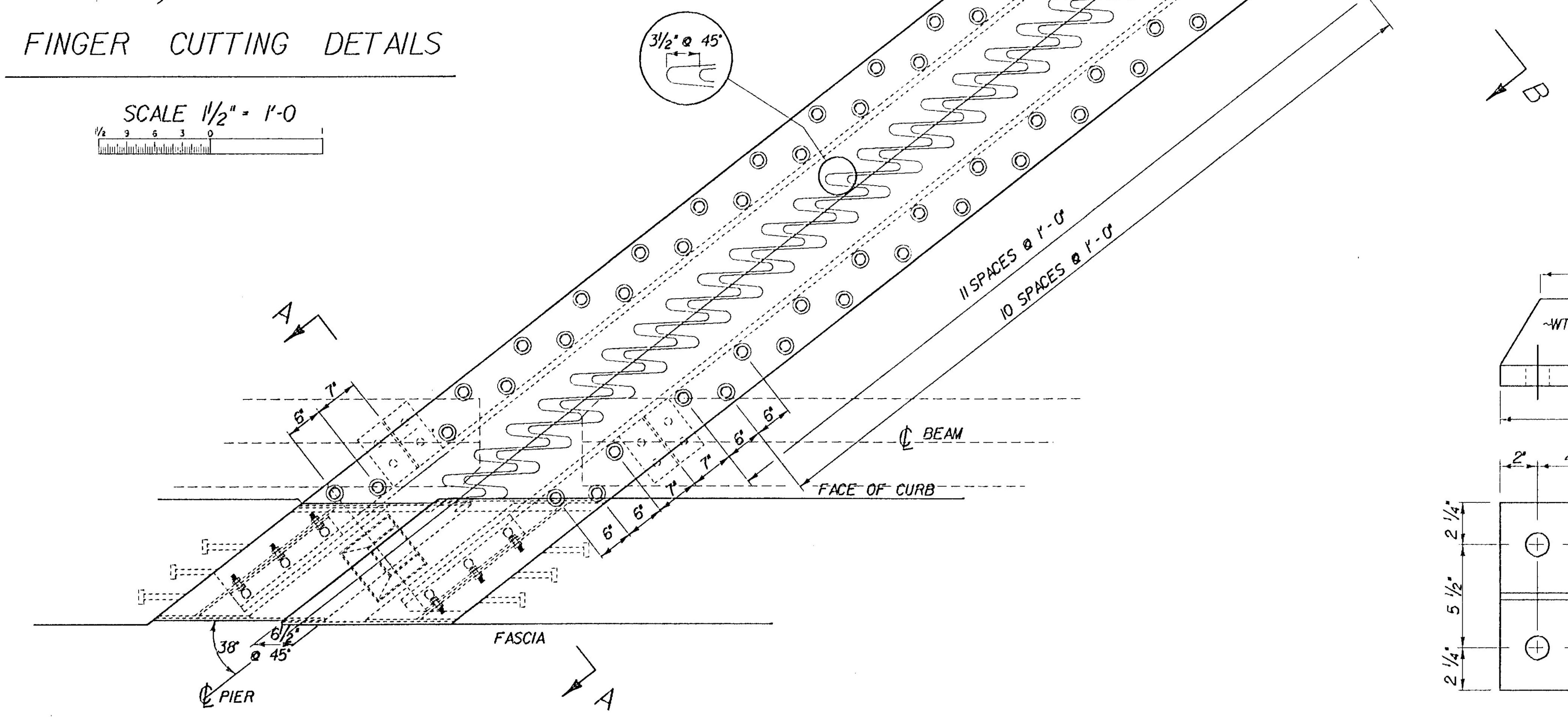


FINGER CUTTING DETAILS

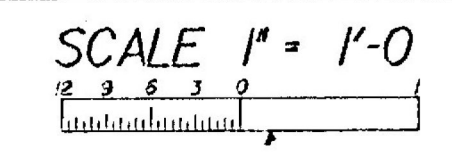


THE "A" DISTANCE CORRECTION WILL RESULT IN A GAP OF SUFFICIENT LENGTH TO ACCOMMODATE THE ANTICIPATED MOVEMENT DUE TO DEAD LOAD DEFLECTION.

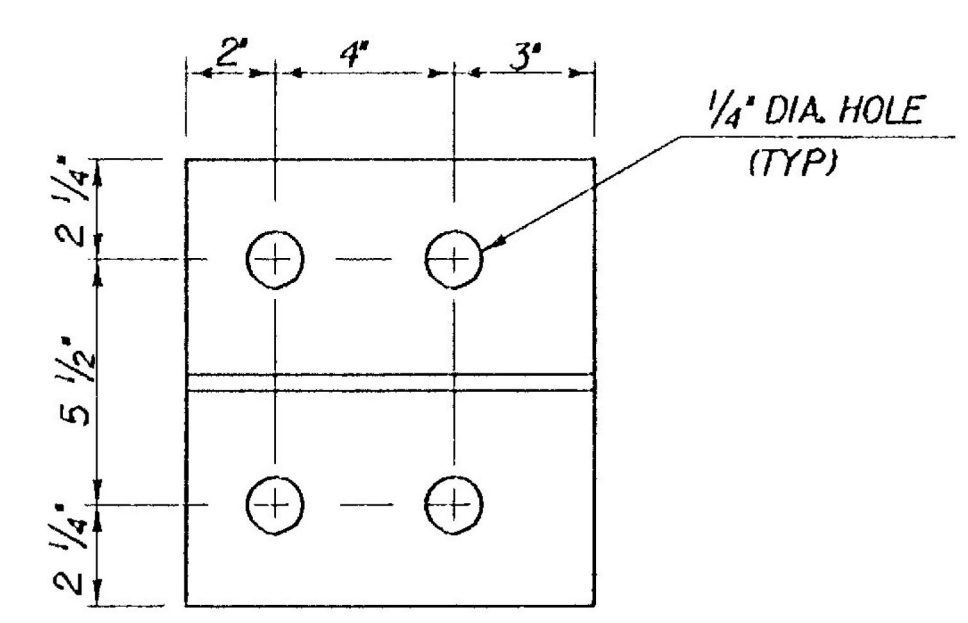
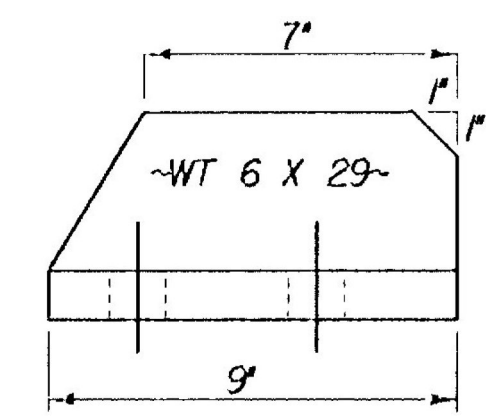
TEMP	"A" DIST
0°F	1 1/16
15°F	11/16
30°F	3/8
45°F	0
60°F	-3/8
75°F	-11/16
90°F	-1 1/16



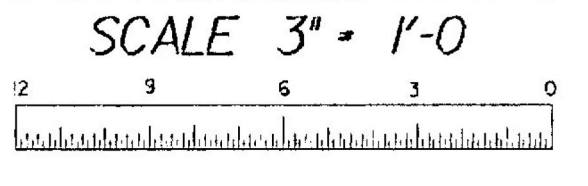
PARTIAL PLAN VIEW



- ~NOTES~
1. EXPANSION JOINTS SHALL MEET THE REQUIREMENTS OF SECTION 516 - EXPANSION DEVICES WITH PAYMENT MADE PER UNIT PRICE FOR ITEM 506.10 - BRIDGE EXPANSION JOINT.
 2. SEE SHEET 22 FOR DETAILS OF HOPPER & DOWNSPOUT.
 3. SEE SHEET 20 FOR SECTIONS A-A & B-B.
 4. A DRIP BEAD OF 1/4" x 9" STRIP OF PREFORMED FABRIC MATERIAL SHALL BE CEMENTED TO THE BOTTOM OF THE FABRIC TROUGH USING AN ADHESIVE APPROVED BY THE MANUFACTURER. A DRIP BEAD SHALL BE USED AT EVERY HOPPER LOCATION.



BRACKET DETAIL



MONTPELIER
IM MEMB(23)

SHEET 54 OF 63
BRIDGE 42N&S
FOR REFERENCE ONLY

STATE OF VERMONT AGENCY OF TRANSPORTATION	
Town Of MONTPELIER	Bridge No. 42 N & S
Highway No. 189	Log Sta.
189 OVER THE WINOOSKI RIVER	
EXPANSION JOINT @ PIER 10	
Designed By C.P. WILLIAMS	Drawn By R. WHITCOMB
Checked By C.P. WILLIAMS	Bridge Design Supervisor
Date 6 - 89	Date 6 - 89
PROJECT MONTPELIER	PROJECT NO. 1R089-2(18)
I.G.C. Info. ZFLC30,31J86A003JT.DGN	PRF. 38JT
Bridge Sheet No.	Sheet 21 of 45