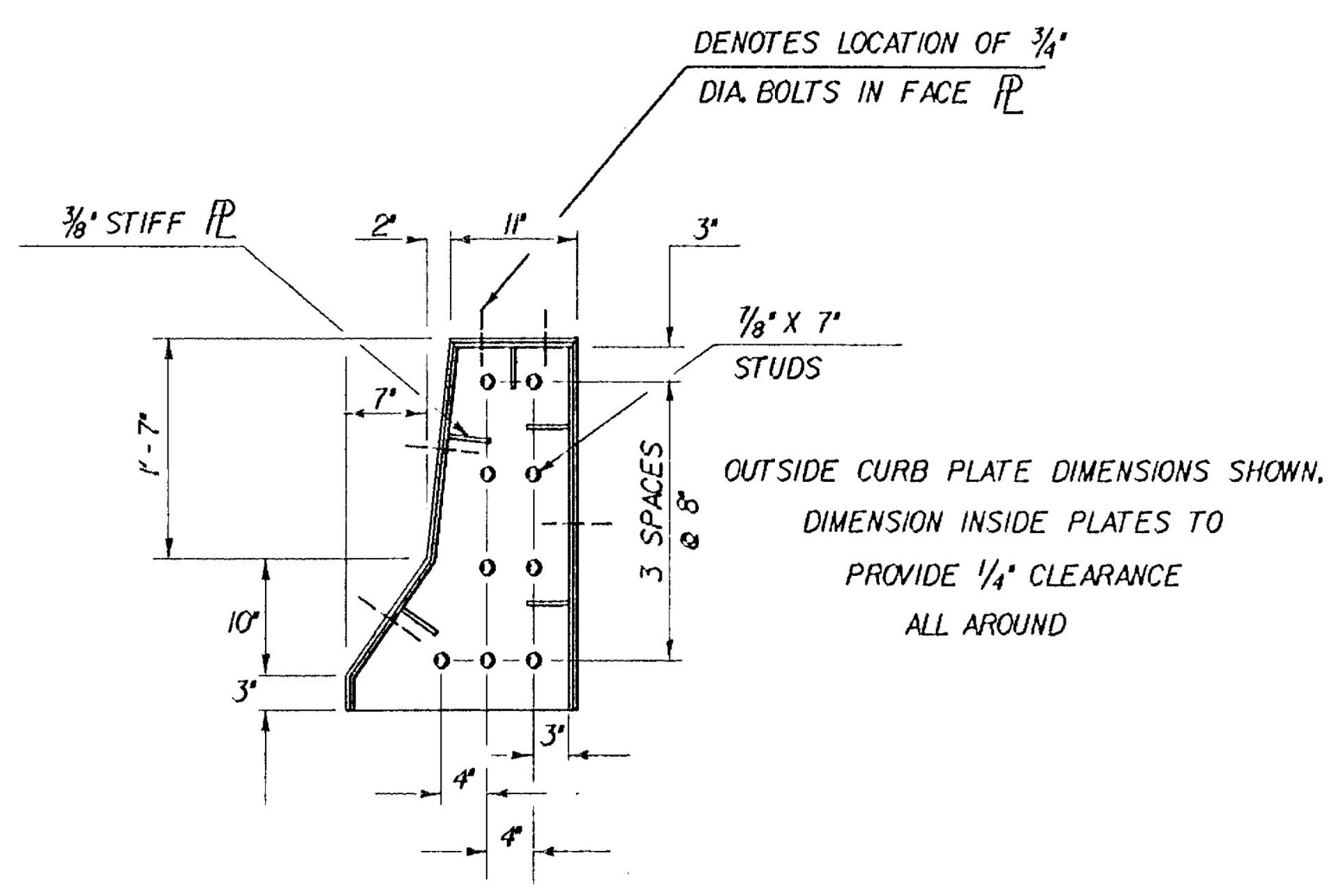
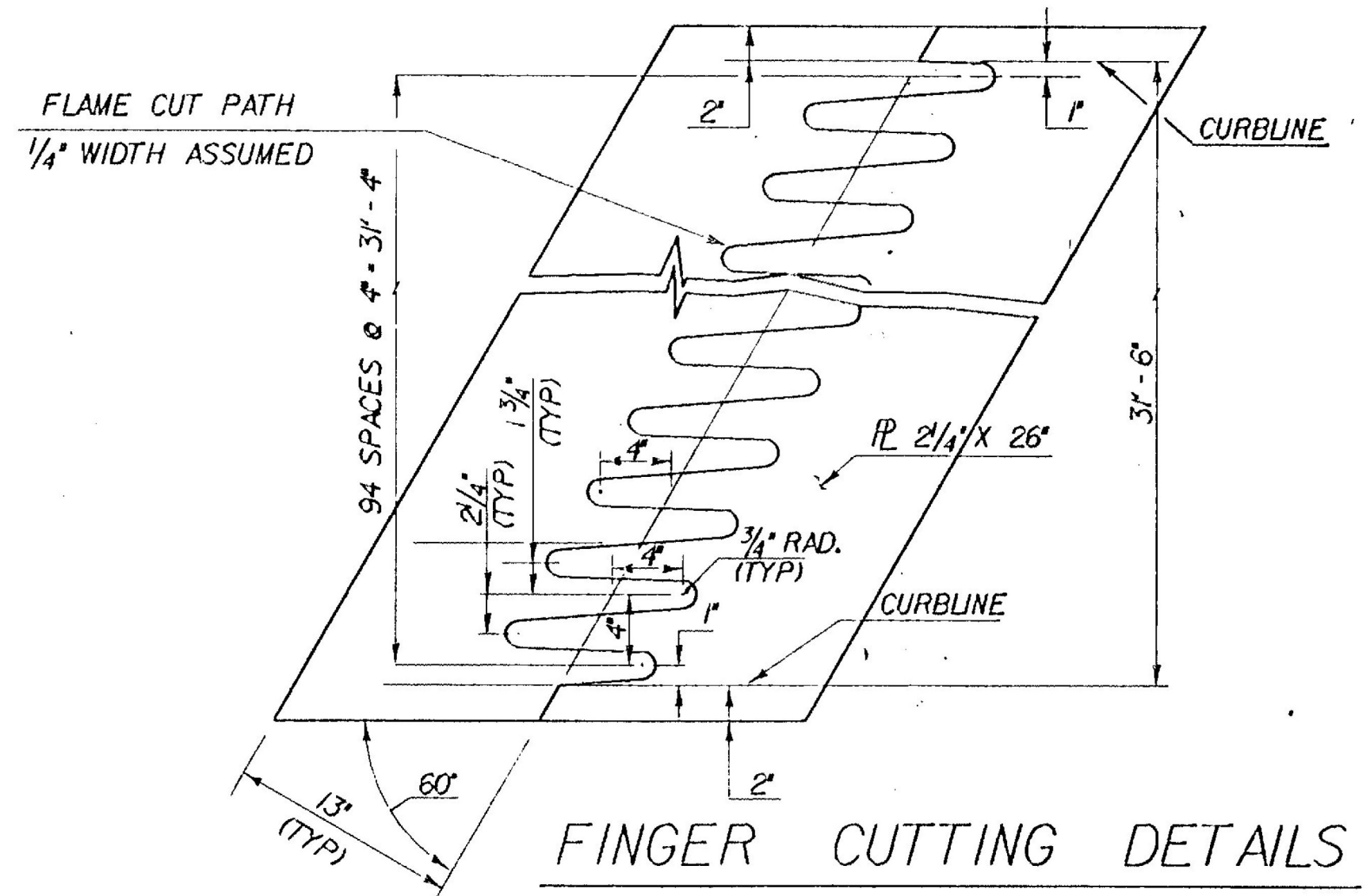


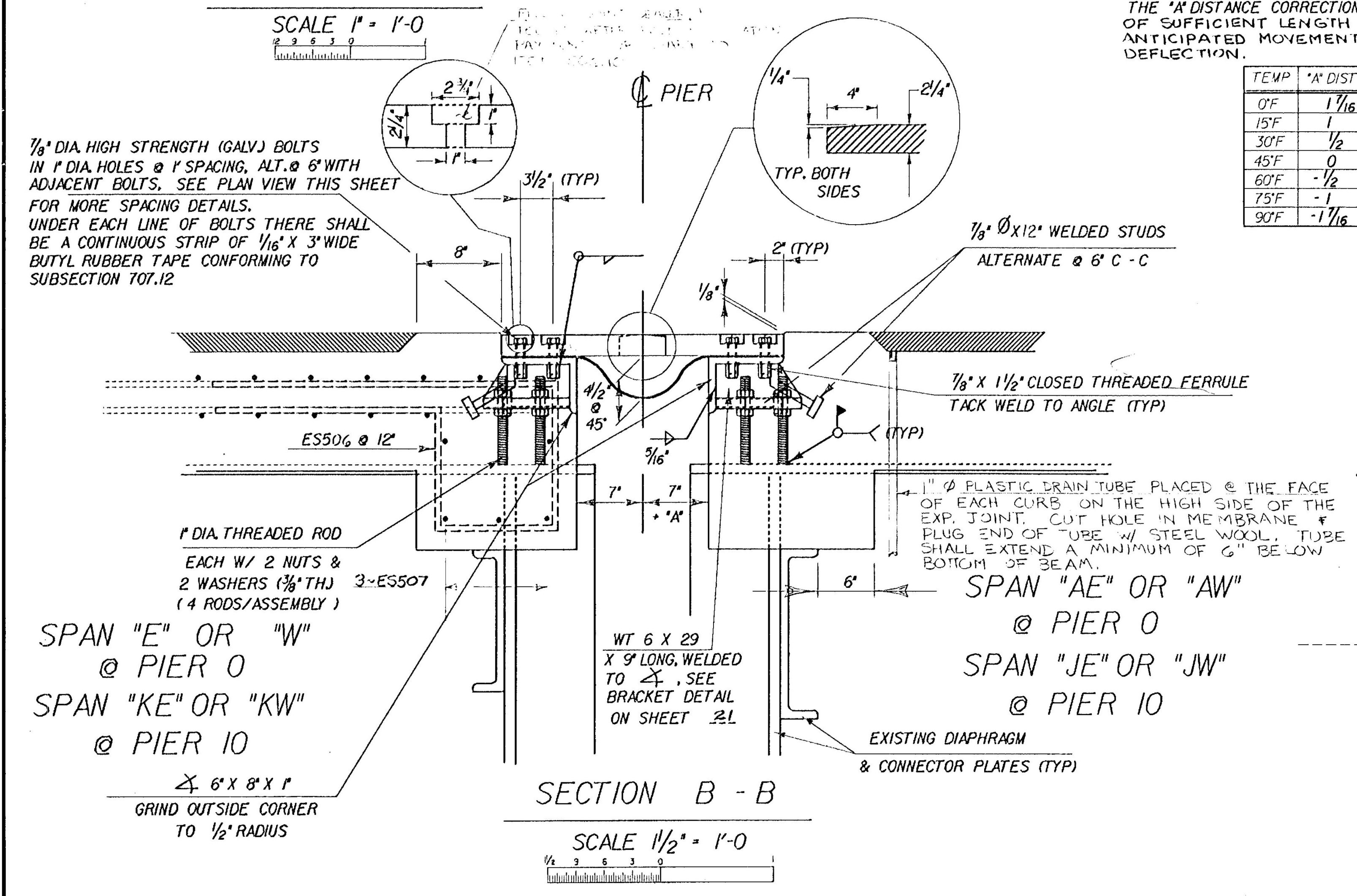
SECTION A - A  
SCALE 1" = 1'-0"



CURB PLATE DETAILS (NORMAL TO CURB)  
SCALE 1" = 1'-0"



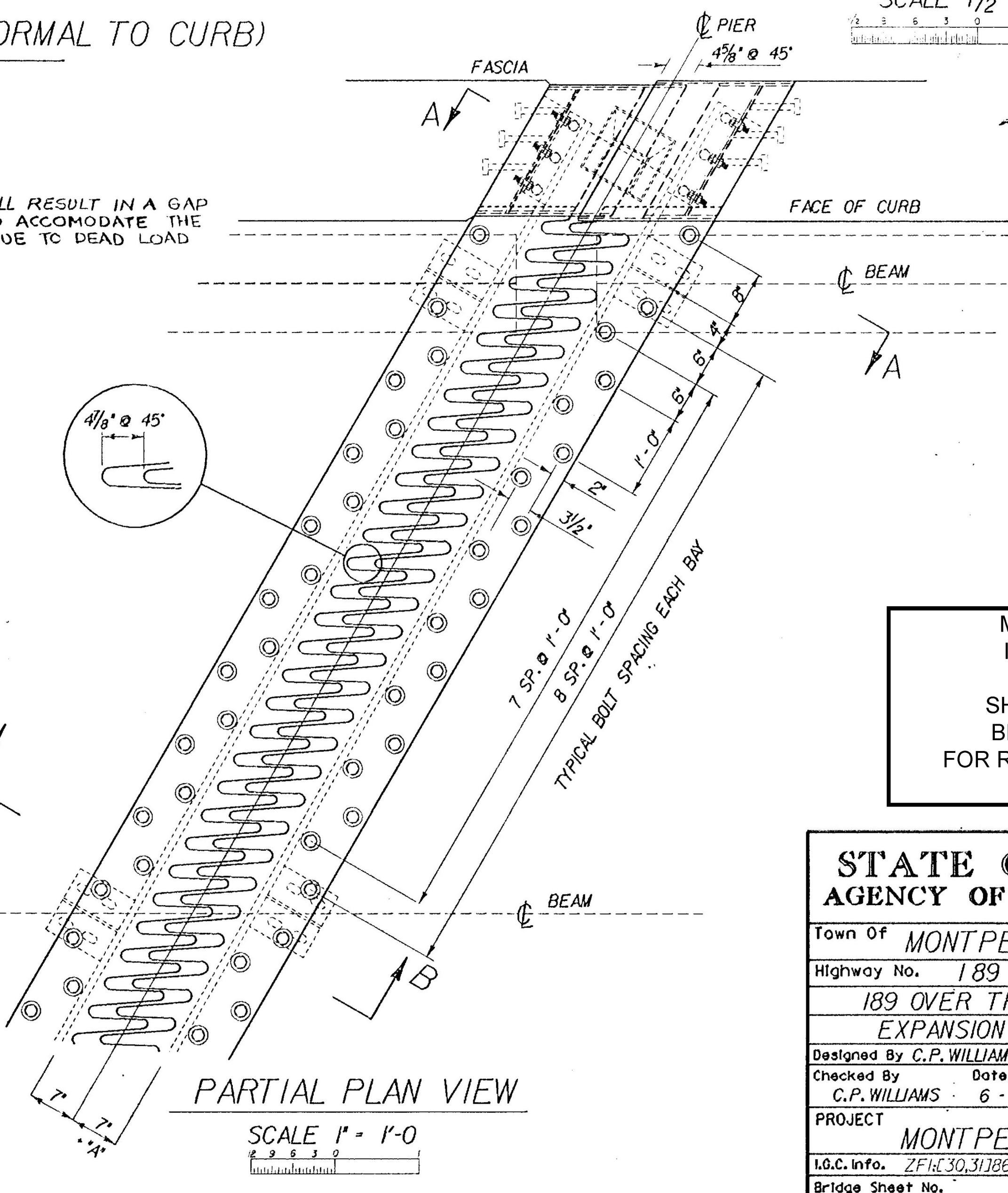
FINGER CUTTING DETAILS  
SCALE 1/2" = 1'-0"



SECTION B - B  
SCALE 1/2" = 1'-0"

THE "A" DISTANCE CORRECTION WILL RESULT IN A GAP OF SUFFICIENT LENGTH TO ACCOMMODATE THE ANTICIPATED MOVEMENT DUE TO DEAD LOAD DEFLECTION.

TEMP	"A" DIST
0°F	1 1/16
15°F	1
30°F	1/2
45°F	0
60°F	-1/2
75°F	-1
90°F	-1 1/16



PARTIAL PLAN VIEW  
SCALE 1" = 1'-0"

MONTPELIER  
IM MEMB(23)  
  
SHEET 53 OF 63  
BRIDGE 42N&S  
FOR REFERENCE ONLY

STATE OF VERMONT AGENCY OF TRANSPORTATION	
Town Of MONTPELIER	Bridge No. 42 N & S
Highway No. 189	Log Sta.
	Surv. Sta.
189 OVER THE WINOOSKI RIVER EXPANSION JOINT @ PIER 0	
Designed By C.P. WILLIAMS	Drawn By R. WHITCOMB
Checked By C.P. WILLIAMS	Date 6-89
	Bridge Design Supervisor F.W. BULKUM Date 6-89
PROJECT MONTPELIER	PROJECT NO. 1R089-2(18)
I.G.C. Info. ZF1630,31786A003JT.DGN	PRF: 60JT
Bridge Sheet No.	Sheet 20 of 45