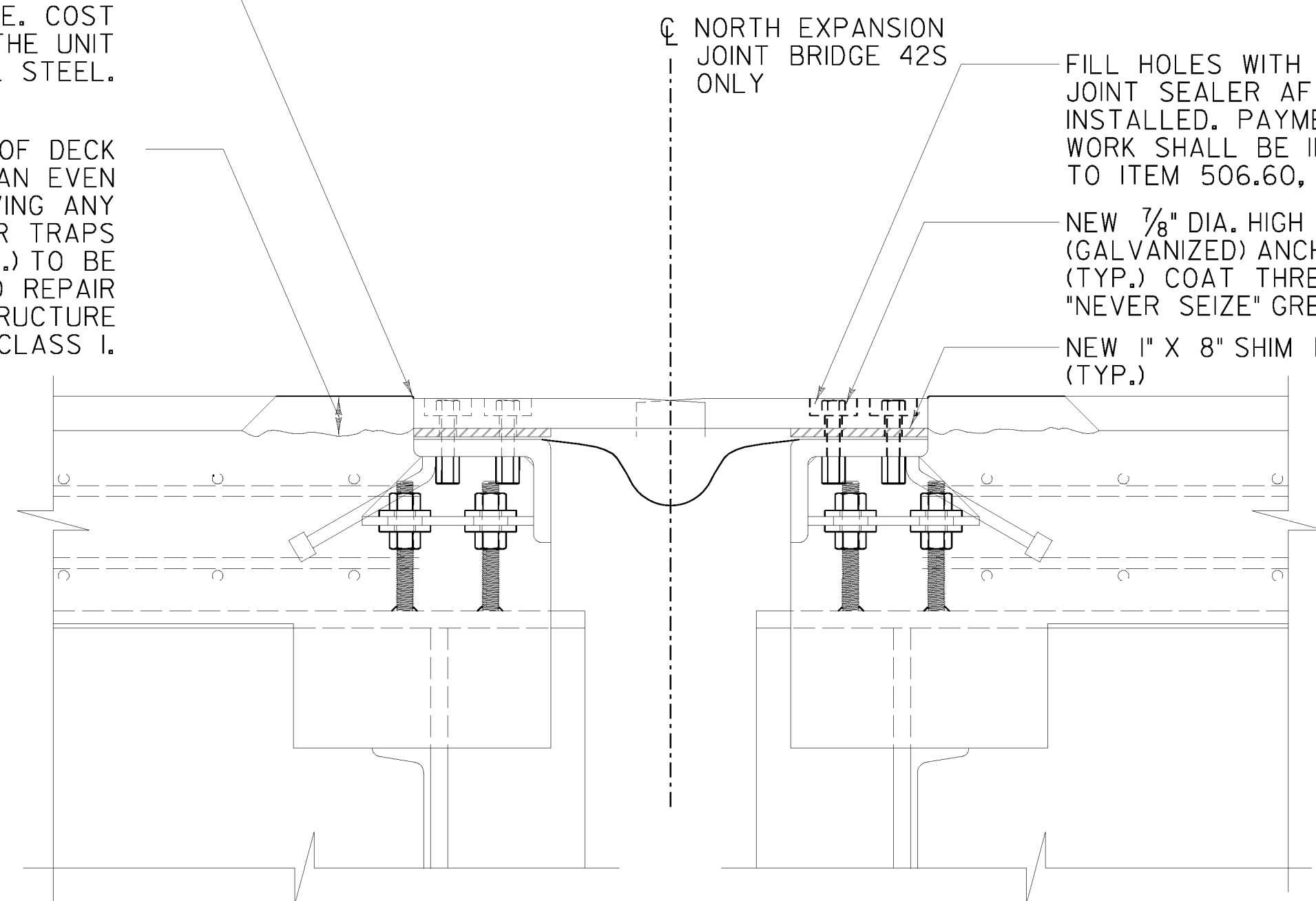


SEAL EXPOSED CONCRETE AND JOINT BETWEEN THE DECK AND STEEL PLATES WITH TWO COATS OF POLYURETHANE MEMBRANE. COST TO BE INCIDENTAL TO THE UNIT PRICE FOR STRUCTURAL STEEL.

REMOVE CONCRETE TO TOP OF DECK ELEVATION AND PROVIDE AN EVEN SURFACE FINISH BY REMOVING ANY EXCESSIVE RIDGES, WATER TRAPS AND SHARP ANGLES (TYP.) TO BE PAID UNDER ITEM 580.10 REPAIR OF CONCRETE SUPERSTRUCTURE SURFACE, CLASS I.



**SHIM DETAIL FOR
NORTH EXPANSION JOINT
AT BRIDGE 42S**

NOT TO SCALE

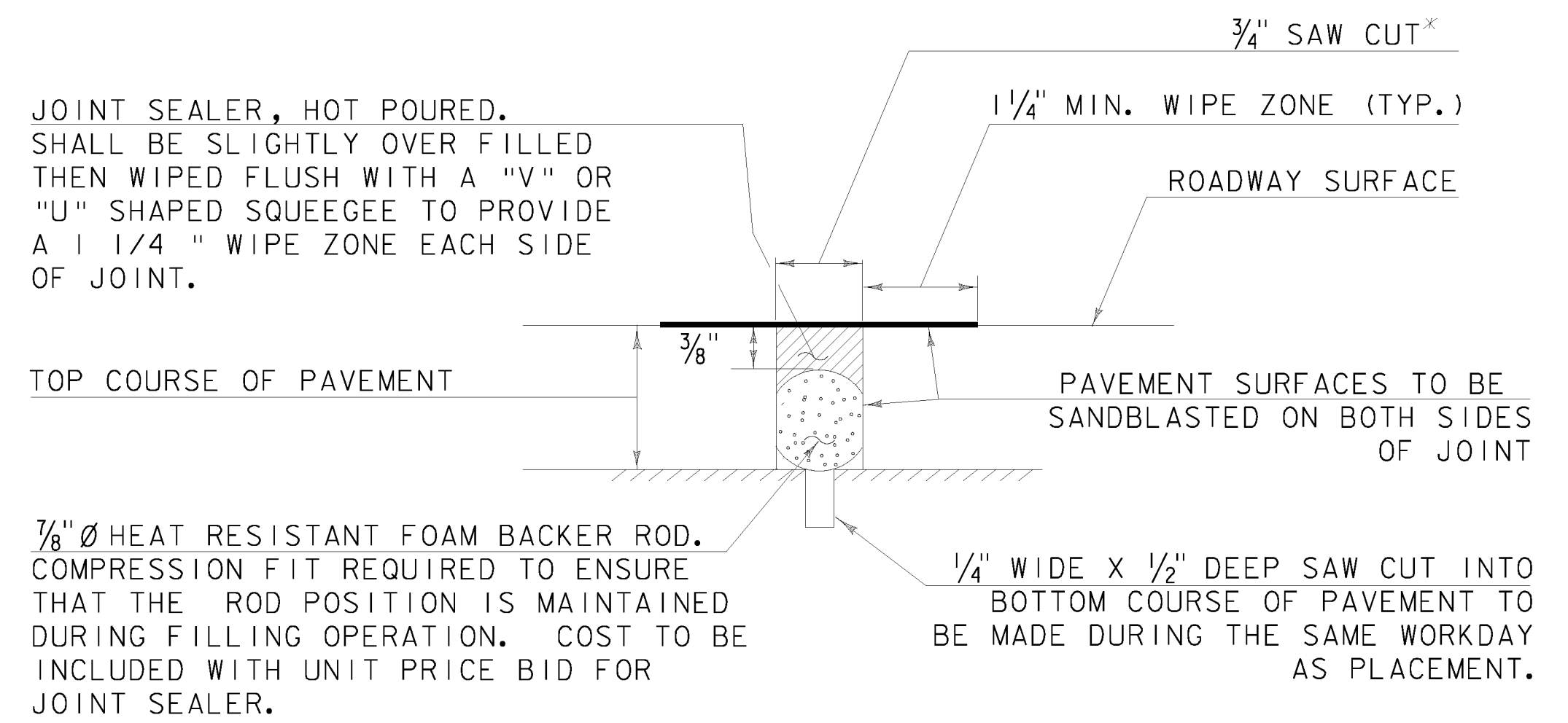
FILL HOLES WITH HOT POURED JOINT SEALER AFTER BOLT INSTALLED. PAYMENT FOR THE WORK SHALL BE INCIDENTAL TO ITEM 506.60, STRUCTURAL STEEL.

NEW 7/8" DIA. HIGH STRENGTH (GALVANIZED) ANCHOR BOLTS (TYP.) COAT THREADS WITH "NEVER SEIZE" GREASE

NEW 1" X 8" SHIM PLATE (TYP.)

NOTES:

1. THE PURPOSE OF THE SHIM PLATE IS TO RAISE THE EXPANSION JOINT TO PROVIDE A SMOOTH RIDING SURFACE.
2. THICKNESS OF SHIM PLATE TO BE 1"
3. HOLES FOR THE GALVANIZED BOLTS MAY BE FIELD DRILLED TO MATCH HOLES IN FINGER PLATES.
4. SHIM PLATES SHALL BE PROVIDED FOR THE ENTIRE LENGTH OF THE FINGER JOINT. PLATES SHALL BE PROVIDED IN SECTIONS TO MATCH FINGER PLATES. SHIM PLATES AND NEW BOLTS WILL BE PAID FOR UNDER ITEM 506.60 STRUCTURAL STEEL. SEE SHEETS 62 AND 63 OF 63 FOR ADDITIONAL INFORMATION. CONTRACTOR TO FIELD VERIFY LENGTH OF EXISTING PLATES.
5. PAYMENT FOR REMOVAL AND INSTALLATION OF EXISTING FINGER PLATES SHALL BE INCIDENTAL TO ITEM 506.60 STRUCTURAL STEEL.
6. COST OF DRILLING HOLES IN SHIM PLATE TO MATCH EXISTING FINGER PLATE SHALL BE INCIDENTAL TO ITEM 506.60 STRUCTURAL STEEL.



NOTE: PLACE JOINT SEALER, HOT POURED AT THE BEGINNING OF APPROACH SLABS.

SAWED PAVEMENT JOINT DETAIL

N. T. S.

* JOINT IS TO BE LOCATED ACCURATELY BY STRING LINING, OR OTHER MEANS, PRIOR TO PAVING, SO THAT THE SAW CUTS WILL BE MADE DIRECTLY OVER THE END OF CONCRETE DECK. JOINT SHALL BE CUT DRY IN A SINGLE PASS AND BE SEALED WITHIN 24 HOURS OR PRIOR TO EXPOSURE TO TRAFFIC. JOINT SHALL BE CLEANED PRIOR TO APPLYING THE JOINT SEALER.



PROJECT NAME: MONTPELIER	PLOT DATE: 5/24/2010
PROJECT NUMBER: IM MEMB(23)	DRAWN BY: T. KNIGHT
FILE NAME: ...\\21.pave joint dets.ptf	CHECKED BY: G. BOGUE
PROJECT LEADER: G. BOGUE	SHEET 50 OF 63
DESIGNED BY: T. KNIGHT	
PAVEMENT JOINT DETAILS	