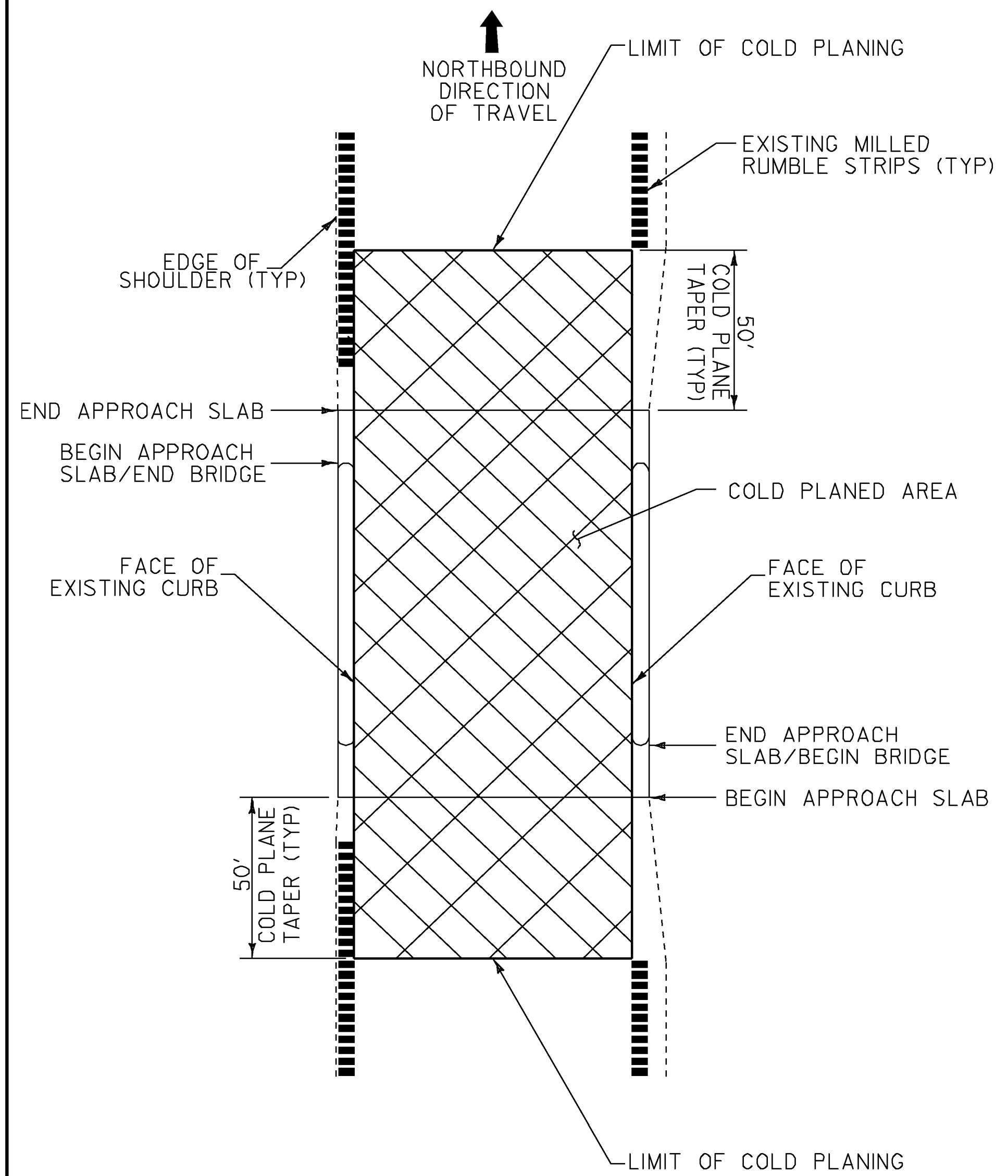
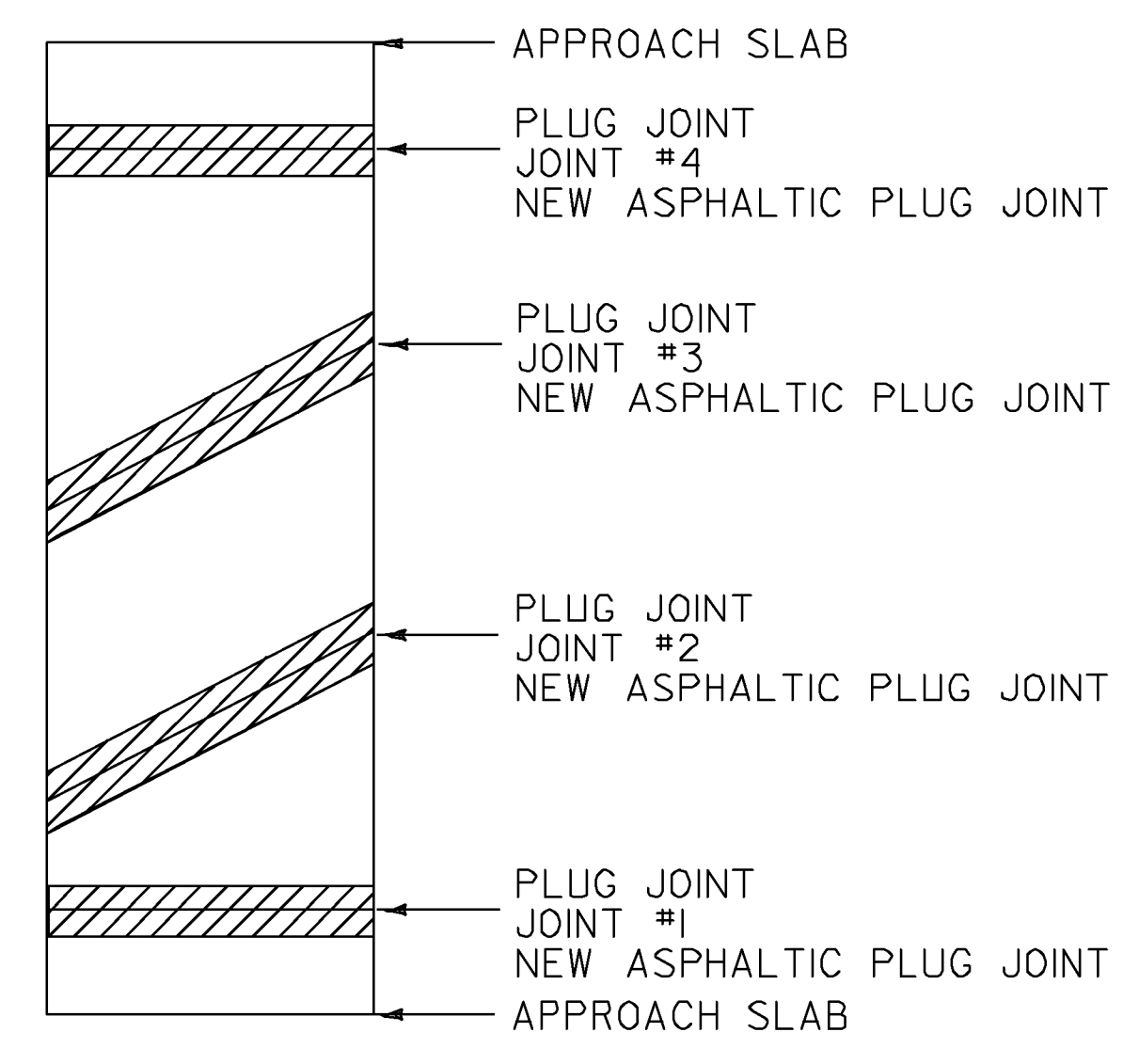
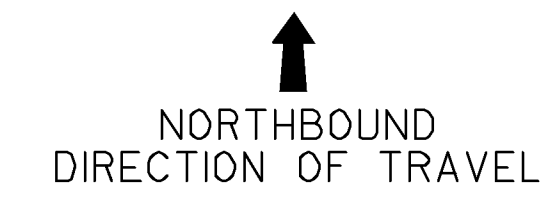


BRIDGE COLD PLANE DETAIL - ALTERNATE A



**BRIDGE COLD PLANE TYPICAL PLAN
ALTERNATE A & B**

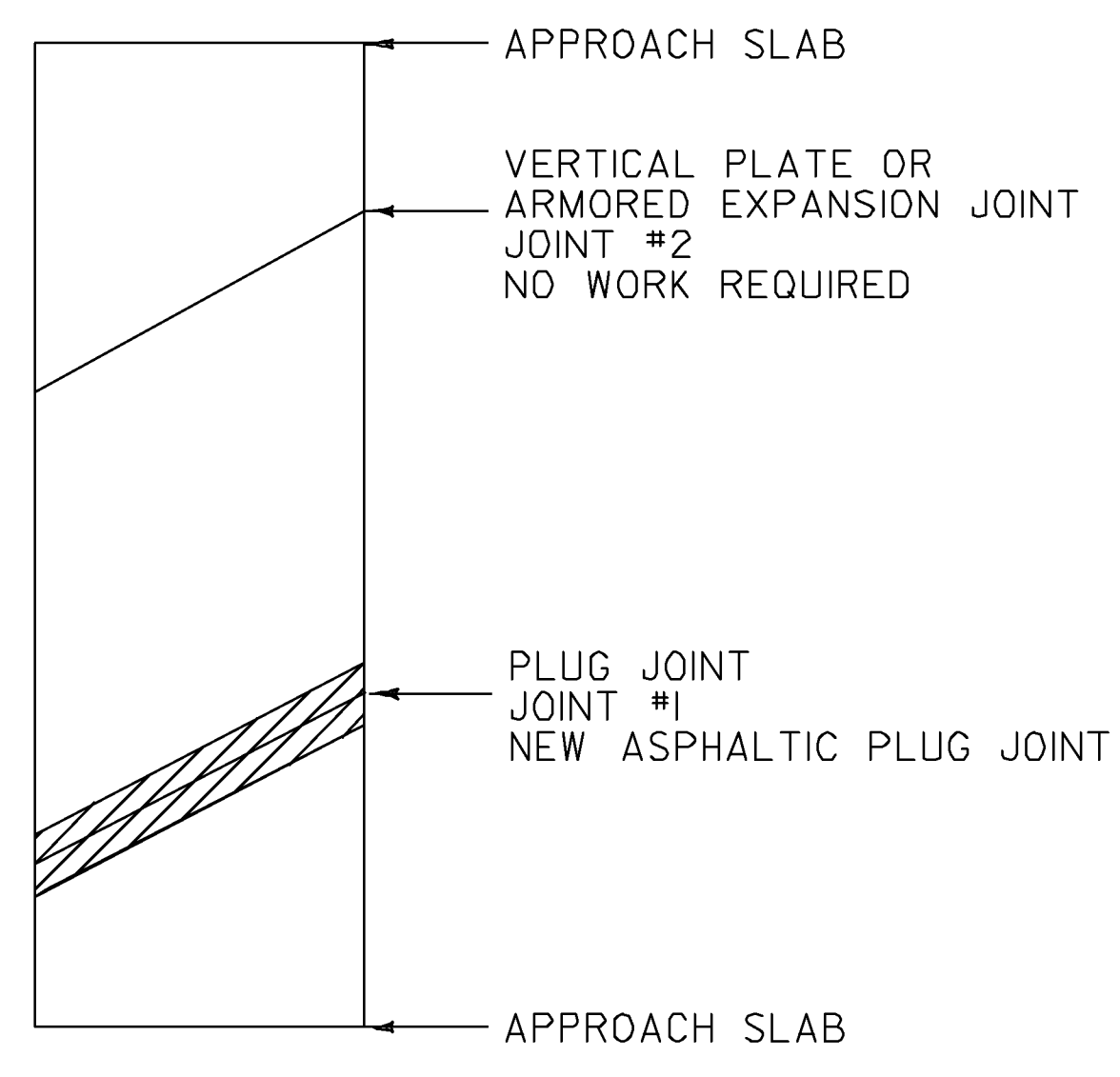
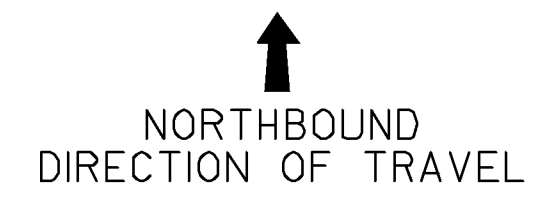


BRIDGE 41N

MM 52.945

LENGTH OF ASPHALTIC PLUG JOINTS:
JOINT #1 - 30'
JOINT #2 - 40'
JOINT #3 - 40'
JOINT #4 - 30'

TOTAL = 140'

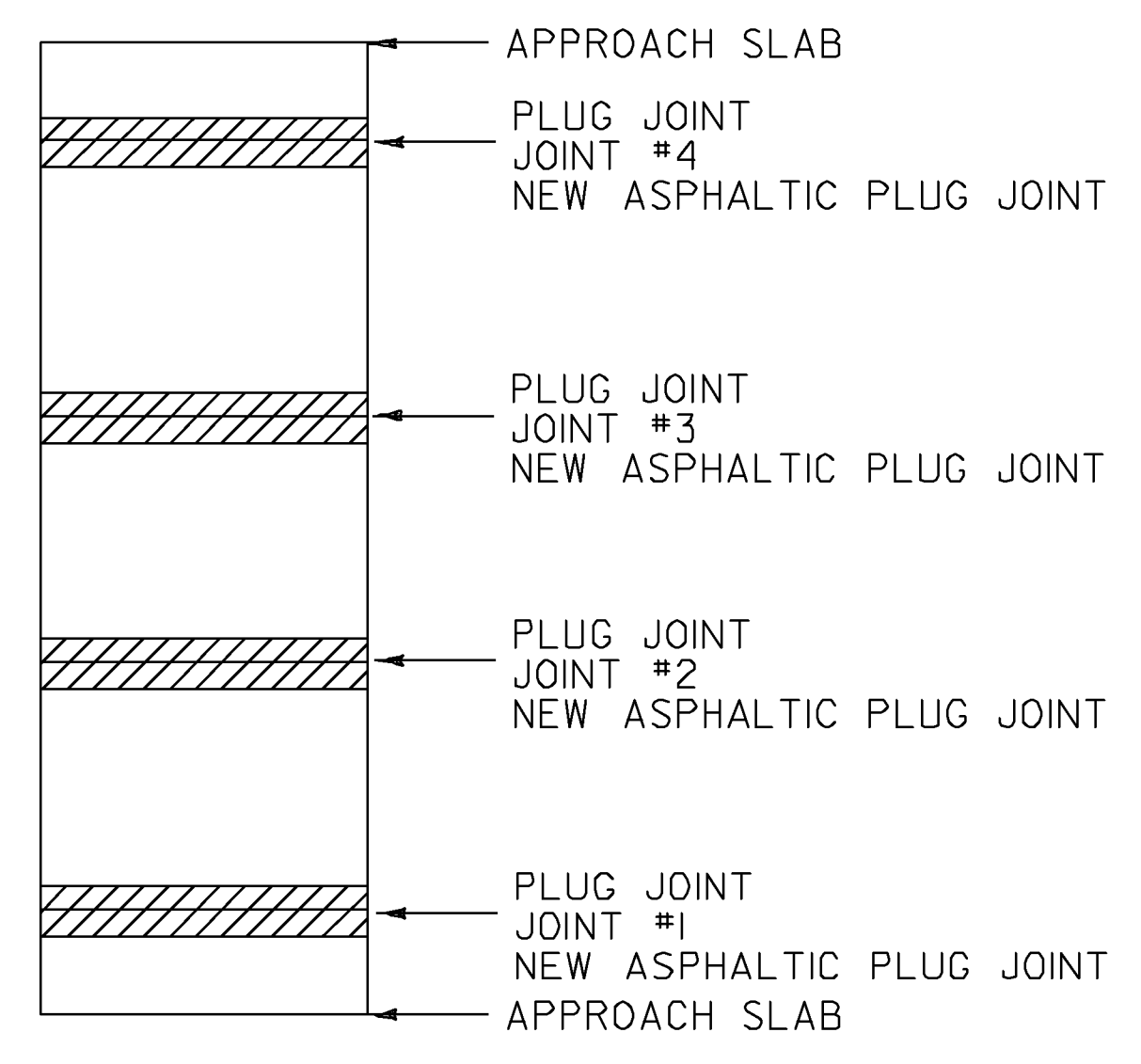
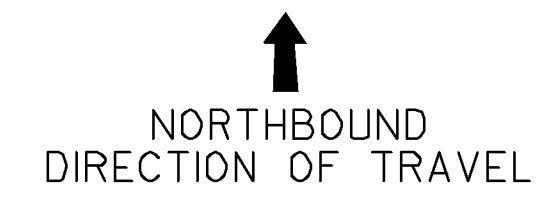


BRIDGE 43N

MM 54.809

LENGTH OF ASPHALTIC PLUG JOINTS:
JOINT #1 - 40'

TOTAL - 40'



BRIDGE 45N

MM 58.721

LENGTH OF ASPHALTIC PLUG JOINTS:
JOINT #1 - 40'
JOINT #2 - 40'
JOINT #3 - 40'
JOINT #4 - 40'

TOTAL = 160'

LEGEND



NOTES:

1. REFER TO ASPHALTIC PLUG JOINT AND DETAILS ON SHEET 10. ALL NEW JOINTS TO BE PAID FOR UNDER ITEM 516.10, "BRIDGE EXPANSION JOINT, ASPHALTIC PLUG".
2. THE CONTRACTOR SHALL TAKE PRECAUTIONS TO AVOID DAMAGING DRAINAGE STRUCTURES AND EXPANSION JOINTS. ANY DAMAGE CAUSED BY THE CONTRACTOR SHALL BE REPAIRED BY THE CONTRACTOR AT THE EXPENSE OF THE CONTRACTOR.
3. THE CONTRACTOR SHALL TAKE PRECAUTIONS TO AVOID THE ACCUMULATION OF DEBRIS IN THE DRAINAGE STRUCTURES LOCATED AT CURB LINE AND IN THE EXPANSION JOINTS. THE CONTRACTOR SHALL EXAMINE THESE BRIDGE FEATURES ON A DAILY BASIS TO ENSURE THAT DEBRIS HAS NOT ACCUMULATED. ANY DEBRIS WHICH IS PRESENT SHALL BE REMOVED BY THE CONTRACTOR AT NO COST TO THE STATE.

**BRIDGE
DETAIL SHEET
NORTHBOUND**

NOT TO SCALE

PROJECT NAME: BERLIN - WATERBURY	
PROJECT NUMBER: IM SURF (20)	
FILE NAME: /pave/09a382/p09a382.dgn	PLOT DATE: 21-MAY-2010
PROJECT LEADER: MIKE FOWLER	DRAWN BY: WILDER
DESIGNED BY: WILDER	CHECKED BY: PAVT MGMT
IPARM FILE NAME: p09a382-08.i	SHEET 8 OF 63