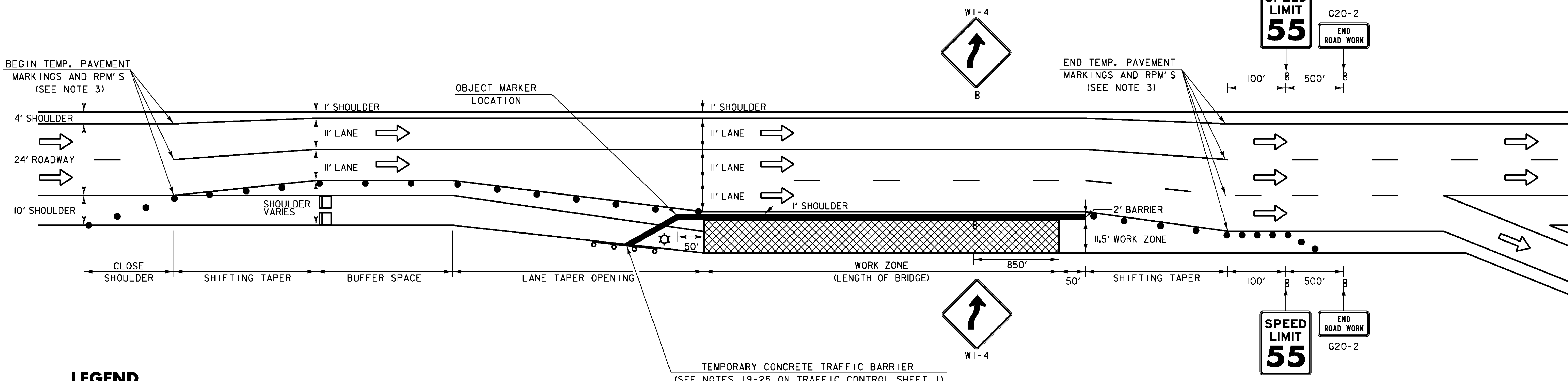


TRAFFIC CONTROL FOR BRIDGE 70 NORTHBOUND ON INTERSTATE 89 LANE SHIFT LEFT WITH TEMPORARY LEFT LANE CLOSURE (NIGHT WORK ONLY) AND CONCRETE TRAFFIC BARRIER



TRAFFIC CONTROL FOR BRIDGE 70 NORTHBOUND ON INTERSTATE 89 LANE SHIFT LEFT WITH TEMPORARY CONCRETE TRAFFIC BARRIER

LEGEND

- FLOW OF TRAFFIC
- RETROREFLECTIVE PLASTIC DRUM
- PORTABLE ARROW BOARD
- TYPE III BARRICADE
- LIGHTING
- TEMPORARY WORK AREA
- TRUCK/TRAILER MOUNTED ATTENUATOR
- PORTABLE CHANGEABLE MESSAGE SIGN (SEE NOTE 15 ON TRAFFIC CONTROL SHEET 1)
- CONSTRUCTION STAGING/ STORAGE AREA/ PERMANENT WORK AREA (SEE NOTE 24 ON TRAFFIC CONTROL SHEET 1)

POSTED SPEED (MPH)	TAPER LENGTHS (FT)			TANGENT W=12 FT (L/2)	BARRIER FLARE RATE (MINIMUM)	MINIMUM BUFFER SPACE LENGTH (FT)	MAXIMUM CHANNELIZING DEVICE SPACING (FT)	
	MERCING 12 FT LANE (L)	SHIFTING 16 FT LANE (L/2)	SHOULDER W=10 FT (L/3)				TAPER (S)	TANGENT (2S)
≤40	320	215	90	160	1:9	305	40	80
45	540	360	150	270	1:9	360	45	90
50	600	400	170	300	1:11	425	50	100
55	660	440	185	330	1:13	495	55	110
60	720	480	200	360	1:13	570	60	120
65	780	560	215	390	1:13	645	65	130

TAPER RATES ARE DETERMINED USING THE FOLLOWING EQUATION:
 $L = WS$ FOR POSTED SPEEDS OF 45 MPH OR GREATER
 $L = WS^2/60$ FOR POSTED SPEEDS OF 40 MPH OR LESS
 L = MINIMUM LENGTH OF TAPER
 W = WIDTH OF OFFSET IN FEET. (TYPICAL)
 S = POSTED SPEED IN MPH

TRAFFIC CONTROL NOTES:

1. SEE THE TRAFFIC CONTROL NOTES ON TRAFFIC CONTROL SHEET 1 FOR ADDITIONAL NOTES AND APPROACH SIGNING FOR LANE CLOSURES.
2. SEE THE CONCRETE MEDIAN BARRIER NOTES ON THE PREVIOUS SHEET (TRAFFIC CONTROL SHEET 1) FOR ADDITIONAL NOTES FOR LANE CLOSURES.
3. EXISTING PAVEMENT MARKINGS THAT CONFLICT WITH TEMPORARY LANE SHIFT LAYOUT SHALL BE MASKED FOR DURATION OF PROJECT.

PROJECT NAME: SOUTH BURLINGTON - WINOOSKI
 PROJECT NUMBER: IM BPNT(5)
 FILE NAME: 04-TCP BR 70.dgn
 PROJECT LEADER: JPB
 DESIGNED BY: JJB
 PLOT DATE: 8/16/2009
 DRAWN BY: NCF/JJB
 CHECKED BY: DH
TRAFFIC CONTROL SHEET 2
 SHEET 4 OF 10