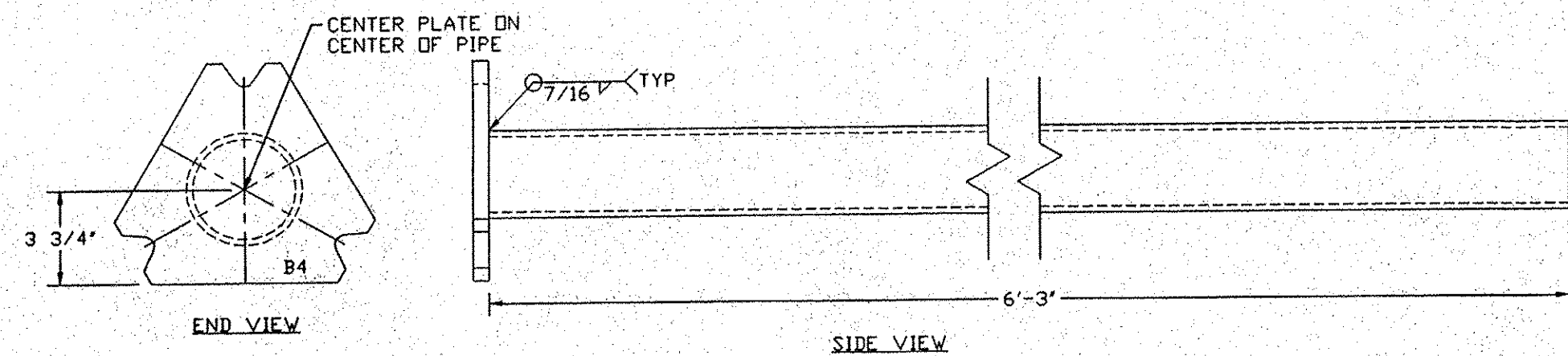
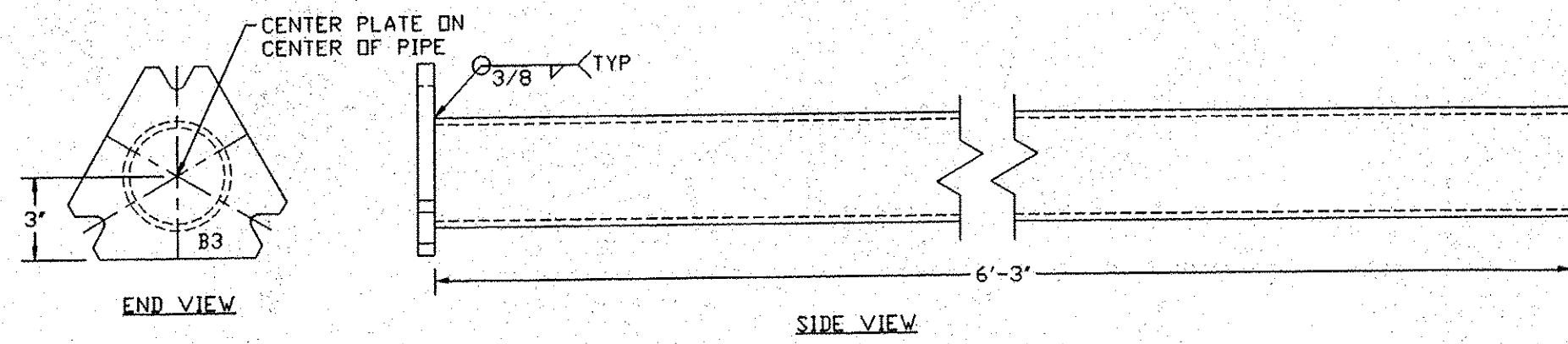


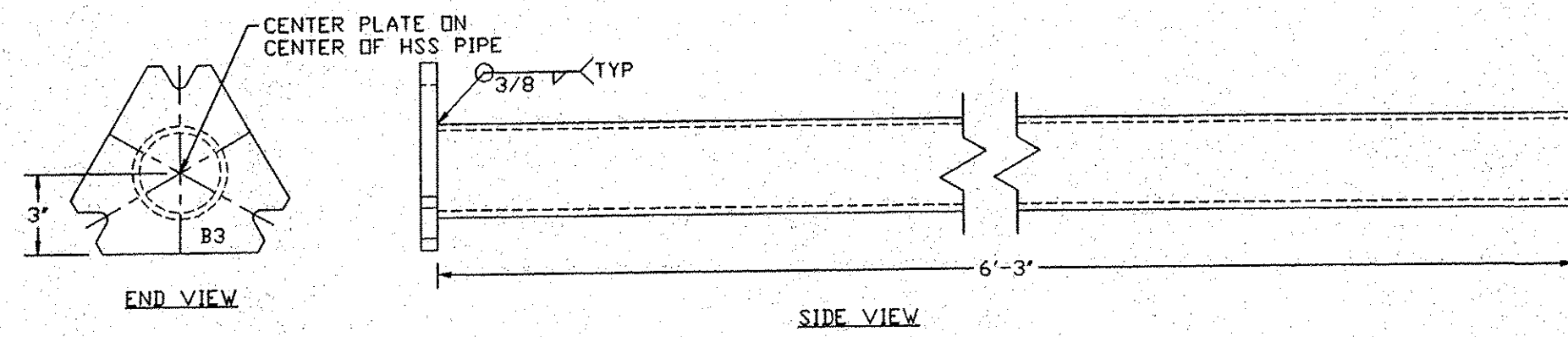
BASE PB10
48 REQ'D
PIPE 5" STD.



BASE PB9
48 REQ'D
PIPE 4" STD.



BASE PB8
48 REQ'D
PIPE 3 1/2" STD.



BASE PB7
258 REQ'D
HSS 3.500X0.216

PB7: 258 REQ'D

PIECE	QUANTITY	ITEM	WEIGHT EA.	TOTAL WT.
B3	1	PL 5/8"	6.79 LBS	6.79 LBS
HSS 3.500X0.216	1	-	47.38 LBS	47.38 LBS
				54.17 LBS

BOLTS:
3- 5/8" X 3 1/4" A325 MG BOLTS

PB9: 48 REQ'D

PIECE	QUANTITY	ITEM	WEIGHT EA.	TOTAL WT.
B3	1	PL 5/8"	6.79 LBS	6.79 LBS
PIPE 3 1/2" STD	1	-	57 LBS	57 LBS
				63.79 LBS

BOLTS:
3- 5/8" X 3 1/4" A325 MG BOLTS

PB9: 4 REQ'D

PIECE	QUANTITY	ITEM	WEIGHT EA.	TOTAL WT.
B4	1	PL 7/8"	1.79 LBS	1.79 LBS
PIPE 4" STD	1	-	67.5 LBS	67.5 LBS
				82.29 LBS

BOLTS:
3- 3/4" X 3 3/4" A325 MG BOLTS

PB10: 10 REQ'D

PIECE	QUANTITY	ITEM	WEIGHT EA.	TOTAL WT.
S3	3	PL 3/8"	0.20 LBS	0.60 LBS
B4	1	PL 7/8"	1.79 LBS	1.79 LBS
PIPE 5" STD	1	-	91.25 LBS	91.25 LBS
				106.64 LBS

BOLTS:
3- 3/4" X 3 3/4" A325 MG BOLTS

Revised
2/26/10

REVISION 1	2/23/10	PB10
CCS CONSTRUCTORS, LLC 138 MUNSON AVE. MORRISVILLE, VT 05661 PH. 802-888-7701 FX. 802-888-4746		PROJECT NO. ROYALTON-MIDDLESEX DRAWING NO. IMG SIGN(19) 2 of 2
SCALE 1"=1'		DATE 2/23/10
DRAWN: EB		SUPERVISOR: AW
FINISH GALVANIZE TO AASHTO M111		TOWNS: ROYALTON, BETHEL, RANDOLF NORTHFIELD, BARRE, MONTPELIER, MIDDLESEX