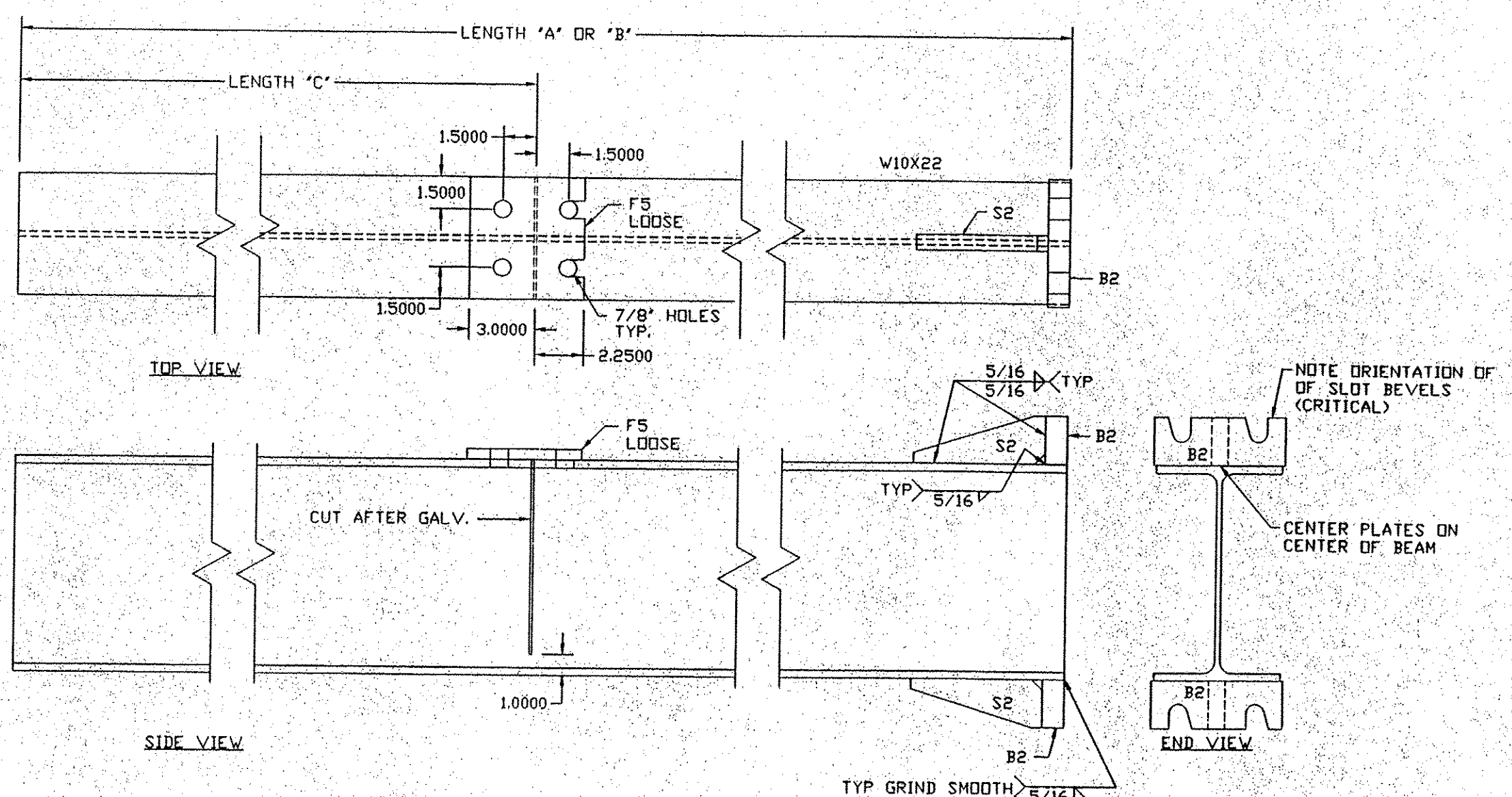
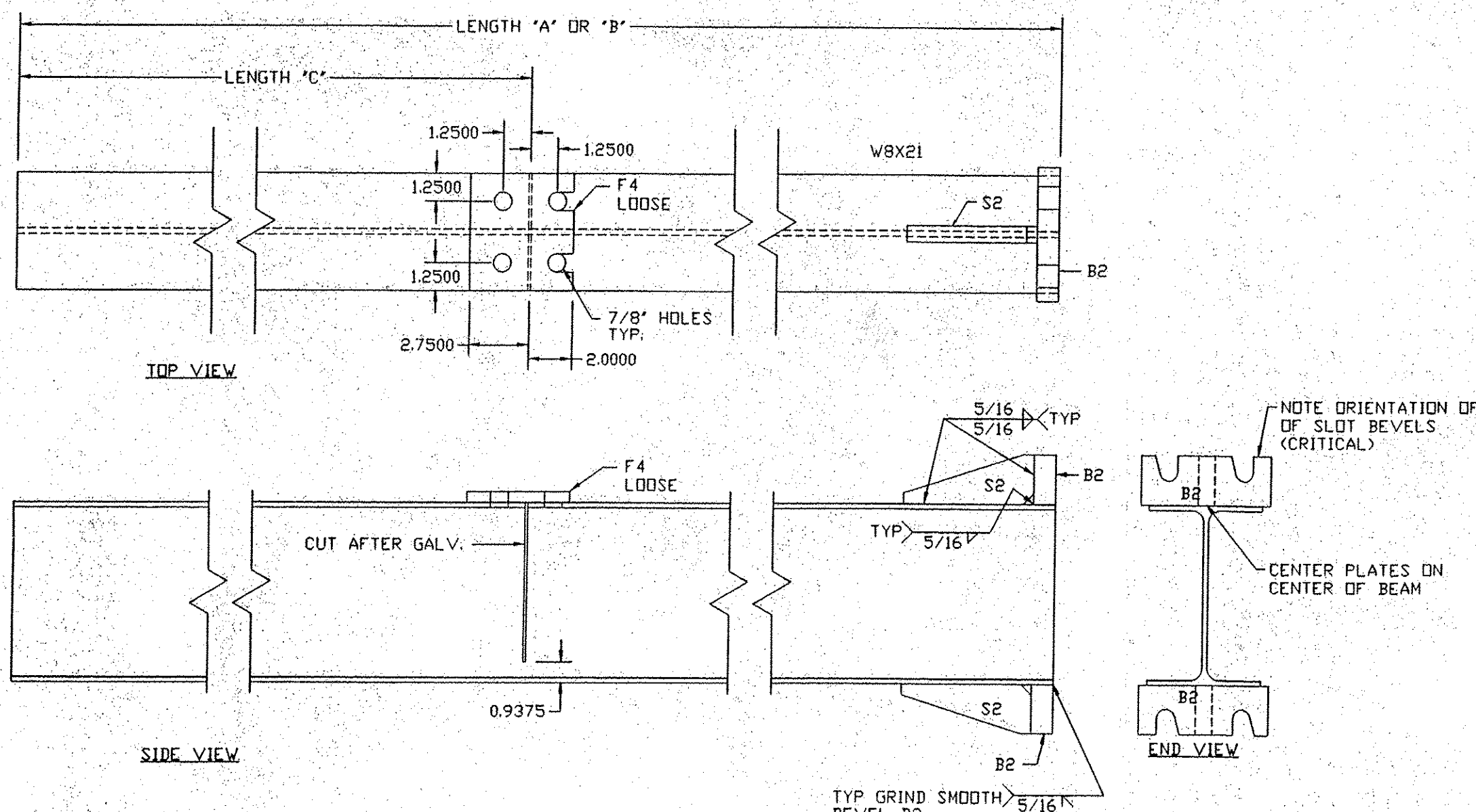


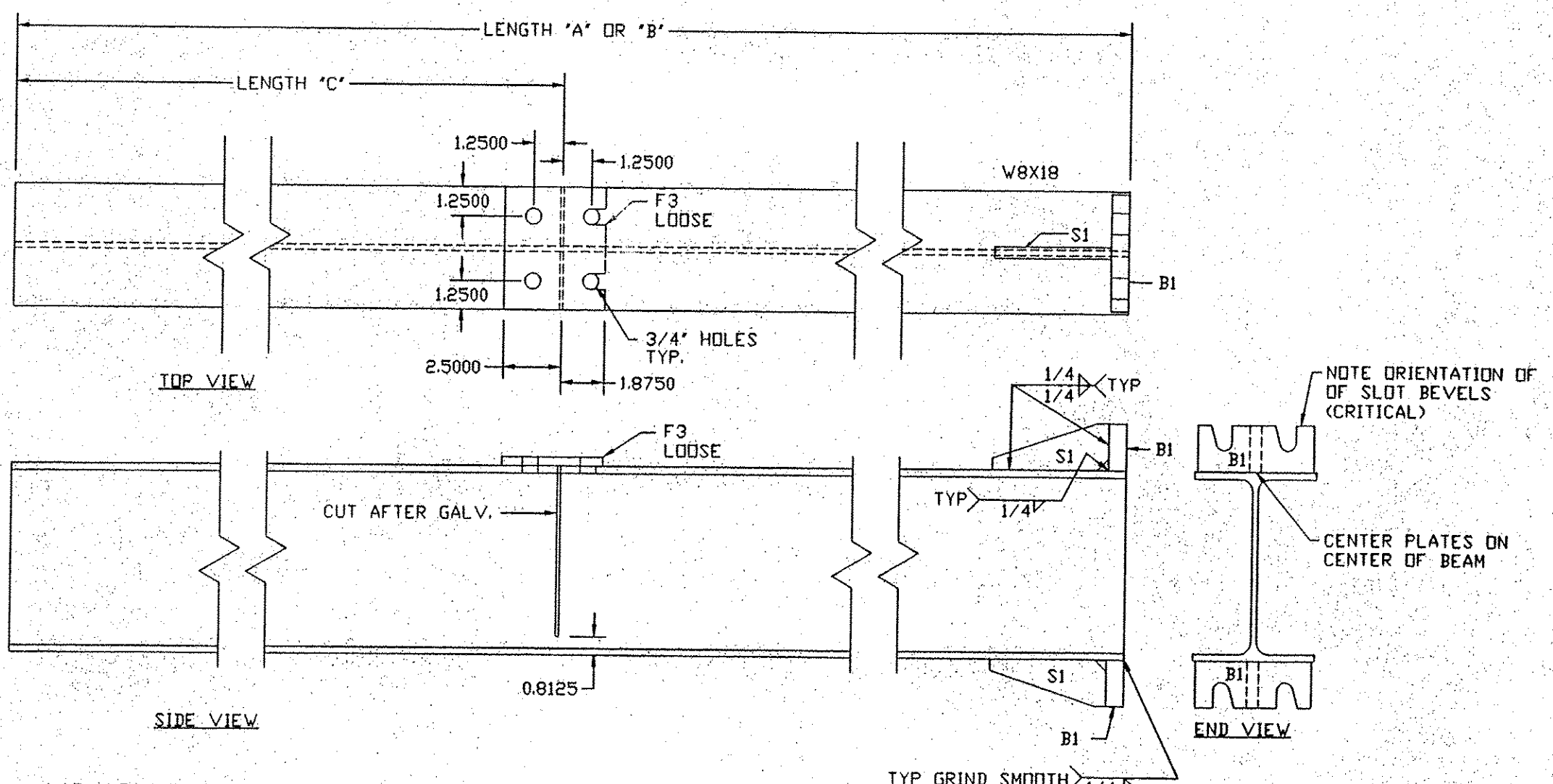
W10x26 UPPER  
4 REQ'D



W10x22 UPPER  
12 REQ'D



W8x21 UPPER  
53 REQ'D



W8x18 UPPER  
34 REQ'D

Mile Marker	Sheet	sign	ht	Int above shoulder (in)	wt A stem (lbs)	wt B stem (lbs)	PL wt (lbs)	Total wt A (lbs)	Total wt B (lbs)	Size	delta A B	A length	B length	C length
21.92NB	53	144	84	368.3	370.5	5.42	373.7	375.9	W8X18	0'-1 1/2"	20'-5 1/2"	20'-7"	12'-4"	
29.68NB	55	114	84	343.0	323.2	5.42	348.5	328.6	W8X18	1'-1 1/4"	19'-11 7/16"	17'-11 7/16"	9'-10"	
30.18NB	55	114	84	341.2	315.2	5.42	346.6	320.6	W8X18	1'-5 5/16"	18'-11 7/16"	17'-6 1/8"	9'-10"	
30.335NB	55	144	84	371.1	341.4	5.42	376.5	346.9	W8X18	1'-7 3/4"	21'-10 1/2"	20'-5 3/8"	12'-4"	
30.500NB	55	126	84	393.8	368.1	5.42	399.2	373.5	W8X18	1'-5 1/8"	20'-7 3/8"	18'-11 5/8"	12'-4"	
31.400SB	73	144	84	403.1	420.9	5.42	408.5	426.4	W8X18	0'-11 7/8"	22'-4 3/4"	23'-4 5/8"	12'-4"	
42.440NB	58	144	84	260.4	290.8	5.42	265.9	296.2	W8X18	1'-8 1/4"	14'-5 5/8"	16'-1 7/8"	12'-4"	
46.405NB	60	144	84	351.7	366.6	5.42	357.1	372.0	W8X18	0'-9 15/16"	19'-6 7/16"	20'-4 3/8"	12'-4"	
49.735NB	61	144	84	364.7	400.3	5.42	370.1	405.7	W8X18	1'-11 3/4"	20'-3 1/8"	22'-2 7/8"	12'-4"	
49.910NB	62	120	84	384.2	410.3	5.42	389.6	415.7	W8X18	1'-5 3/8"	21'-4 1/8"	22'-9 1/2"	10'-4"	
51.720NB	63	114	96	277.7	222.8	5.42	283.1	228.2	W8X18	3'-6/8"	15'-5 1/8"	12'-4 1/2"	9'-10"	
52.235NB	64	114	84	382.6	386.0	5.42	388.0	391.4	W8X18	0'-2 1/4"	21'-3 1/16"	21'-5 5/16"	9'-10"	
52.440NB	63	144	84	382.6	386.0	5.42	388.0	391.4	W8X18	1'-2 1/8"	19'-4 7/8"	20'-7"	12'-4"	
32.060SB	73	114	84	276.9	245.4	5.42	282.4	250.9	W8X18	1'-2 1/8"	19'-4 7/8"	20'-7"	12'-4"	
43.390SB	75	144	84	349.3	370.5	5.42	354.7	375.9	W8X18	0'-10 3/4"	19'-5 5/8"	20'-4 3/8"	12'-4"	
47.200 SB	77	102	84	304.9	287.4	5.42	310.3	292.9	W8X18	0'-11 5/8"	16'-11 1/4"	15'-11 5/8"	8'-10"	
47.360 SB	77	144	84	350.4	366.6	5.42	355.9	372.0	W8X18	0'-10 3/4"	19'-5 5/8"	20'-4 3/8"	12'-4"	
51.080 SB	79	144	84	354.3	382.8	5.42	359.7	388.2	W8X18	1'-7"	19'-8 3/16"	21'-3 3/16"	12'-4"	
21.320NB	53	138	84	434.8	369.7	10.22	445.0	379.9	W8X21	3'-3 3/16"	20'-8 7/16"	17'-7 1/4"	12'-4 1/4"	
22.135NB	63	120	96	412.1	427.1	10.22	422.3	437.3	W8X21	0'-8 9/16"	19'-7 1/2"	20'-4 1/16"	11'-10 1/4"	
41.840NB	57	144	84	404.7	440.1	10.22	414.9	450.3	W8X21	1'-8 1/4"	19'-3 1/4"	20'-11 1/2"	12'-4 1/4"	
42.716NB	58	120	84	260.5	297.3	10.22	270.8	307.5	W8X21	1'-9"	12'-4 7/8"	14'-1 7/8"	10'-4 1/4"	
45.900NB	59	144	84	387.4	347.8	10.22	397.6	358.0	W8X21	1'-10 5/8"	18'-5 3/8"	16'-6 3/4"	12'-4 1/4"	
46.250NB	60	138	84	415.8	390.3	10.22	426.1	400.5	W8X21	1'-2 5/8"	19'-9 5/8"	18'-7"	11'-10 1/4"	
46.535NB	60	126	84	366.8	340.2	10.22	377.1	350.4	W8X21	1'-3 1/4"	17'-5 5/8"	16'-2 3/8"	10'-10 1/4"	
48.953NB	61	144	84	423.0	402.3	10.22	433.2	412.5	W8X21	0'-11 13/16"	20'-11 1/16"	19'-1 7/8"	12'-4 1/4"	
49.505NB	61	138	84	300.1	292.5	10.22	310.3	302.7	W8X21	0'-4 1/4"	14'-3 1/2"	13'-11 1/8"	11'-10 1/4"	
52.596NB	64	132	84	428.3	420.9	10.22	438.5	431.1	W8X21	0'-4 1/4"	20'-4 3/4"	20'-1/2"	11'-4 1/4"	
57.330NB	67	144	84	457.4	398.3	10.22	467.6	408.6	W8X21	2'-9 3/4"	18'-11 5/8"	18'-11 5/8"	12'-4 1/4"	
57.955NB	67	138	96	426.9	458.5	10.22	436.1	468.7	W8X21	1'-6 5/8"	20'-3 3/8"	21'-10"	11'-10 1/4"	
58.455NB	68	156	96	437.9	374.3	10.22	448.2	384.5	W8X21	3'-3/8"	20'-10 1/4"	17'-9 7/8"	13'-4 1/4"	
22.640SB	71	120	84	371.4	298.2	10.22	381.7	308.4	W8X21	3'-5 7/8"	17'-8 1/4"	14'-2 3/8"	10'-4 1/4"	
23.300SB	71	144	84	402.8	332.9	10.22	413.0	343.2	W8X21	3'-3 15/16"	19'-2 3/16"	15'-10 1/4"	12'-4 1/4"	
31.200SB	73	126	84	450.0	476.8	10.22	460.2	487.0	W8X21	1'-3 5/16"	21'-5 1/8"	22'-8 7/16"	10'-10 1/4"	
31.570SB	73	114	96	417.4	483.7	10.22	427.6	493.9	W8X21	3'-1 7/8"	19'-10 1/2"	23'-3/8"	9'-10 1/4"	
46.940 SB	77	126	84	435.1	464.0	10.22	445.3	474.2	W8X21	1'-4 1/2"	20'-8 5/8"	22'-1 1/8"	10'-10 1/4"	
47.815 SB	78	144	84	433.1	463.2	10.22	443.3	473.4	W8X21	1'-5 3/16"	20'-7 1/2"	22'-11 1/16"	12'-4 1/4"	
50.930 SB	79	138	84	445.8	470.8	10.22	456.0	481.0	W8X21	1'-2 1/4"	21'-2 3/4"	22'-5"	11'-10 1/4"	
51.230 SB	80	138	84	436.2	480.4	10.22	446.4	490.6	W8X21	1'-2 1/4"	20'-9 1/4"	22'-10 1/2"	11'-10 1/4"	
51.615 SB	80	144	84	439.5	420.5	10.22	449.7	430.8	W8X21	0'-10 13/16"	20'-11 1/8"	20'-5 1/16"	12'-4 1/4"	
53.350 SB	81	120	84	350.0	347.8	10.22	360.2	358.0	W8X21	0'-1 1/4"	16'-8"	16'-6 3/4"	10'-4 1/4"	
53.550 SB	81	144	84	436.8	453.5	10.22	447.1	463.7	W8X21	0'-9 1/2"	20'-9 5/8"	21'-7 1/8"	12'-4 1/4"	
59.300 SB	86	138	96	463.1	481.3	10.22	473.3	491.5	W8X21	0'-10 3/8"	22'-5/8"	22'-11"	11'-10 1/4"	
59.870 SB	86	144	84	507.5	536.9	10.22	517.7	547.1	W8X21	1'-4 13/16"	24'-2"	25'-6 13/16"	12'-4 1/4"	
42.290NB	58	138	96	421.7	359.9	10.22	431.9	370.1	W10X22	2'-9 11/16"	19'-2"	16'-4 5/16"	11'-10 1/2"	
22.949SB	71	138	96	475.1	607.5	10.22	485.3	617.7	W10X22	6'-1/4"	21'-7 1/8"	27'-7 3/8"	11'-10 1/2"	
43.240SB	75	120	84	420.3	509.7	10.22	430.5	519.9	W10X22	4'-3/4"	19'-1 1/4"	23'-2"	10'-4 1/2"	
44.250SB	76	144	84	407.0	396.0	10.22	417.2	406.2	W10X22	0'-6"	18'-8"	18'-0"	12'-4 1/2"	
53.850 SB	82	138	96	458.3	531.0	10.22	468.6	541.2	W10X22	3'-3 5/8"	20'-10"	24'-1 5/8"	11'-10 1/2"	
54.150 SB	82	144	84	443.7	514.0	10.22	453.9	524.2	W10X22	3'-3 3/8"	20'-2"	23'-4 5/8"	12'-4 1/2"	
59.000 SB	85	138	96	535.8	589.6	10.22	546.0	599.9	W10X22	2'-5 3/8"	24'-4 1/4"	26'-9 5/8"	13'-4 1/2"	
43.540SB	76	138	96	535.0	619.9	10.22	545.3	630.2	W10X26	3'-3 3/16"	20'-6 15/16"	23'-10 1/8"	11'-10 1/2"	
47.510 SB	78	138	96	541.0	620.8	10.22	551.2	631.0	W10X26	3'-13/16"	20'-9 11/16"	23'-10 1/2"	11'-10 1/2"	

NOTE: ALL W-SHAPES AASHTO M270 GR. 36 DR 50  
 NOTE: ALL PLATES AASHTO M270 GR. 36 DR 50  
 NOTE: ALL ROUND HSS SHAPES ASTM A500 GR. B  
 NOTE: ALL PIPE SHAPES ASTM A53 GR. B

CCS CONSTRUCTORS, LLC 138 MUNSON AVE. MORRISVILLE, VT 05661 PH. 802-888-7701 FX. 802-888-4746	REVISION 1	2/23/10	UPPER 5'
	PROJECT NAME	ROYALTON-MIDDLESEX	PROJECT NO.
	UPPERS		IMG SIGN(19)
FINISH:	DRAWN: EB	DATE 2/23/10	DRAWING NO.
GALVANIZE TO AASHTO M111			1 of 2
	TOWNS: ROYALTON, BETHEL, RANDOLF		SUPERVISOR: AW
	NORTHFIELD, BARRE, MONTPELIER, MIDDLESEX		