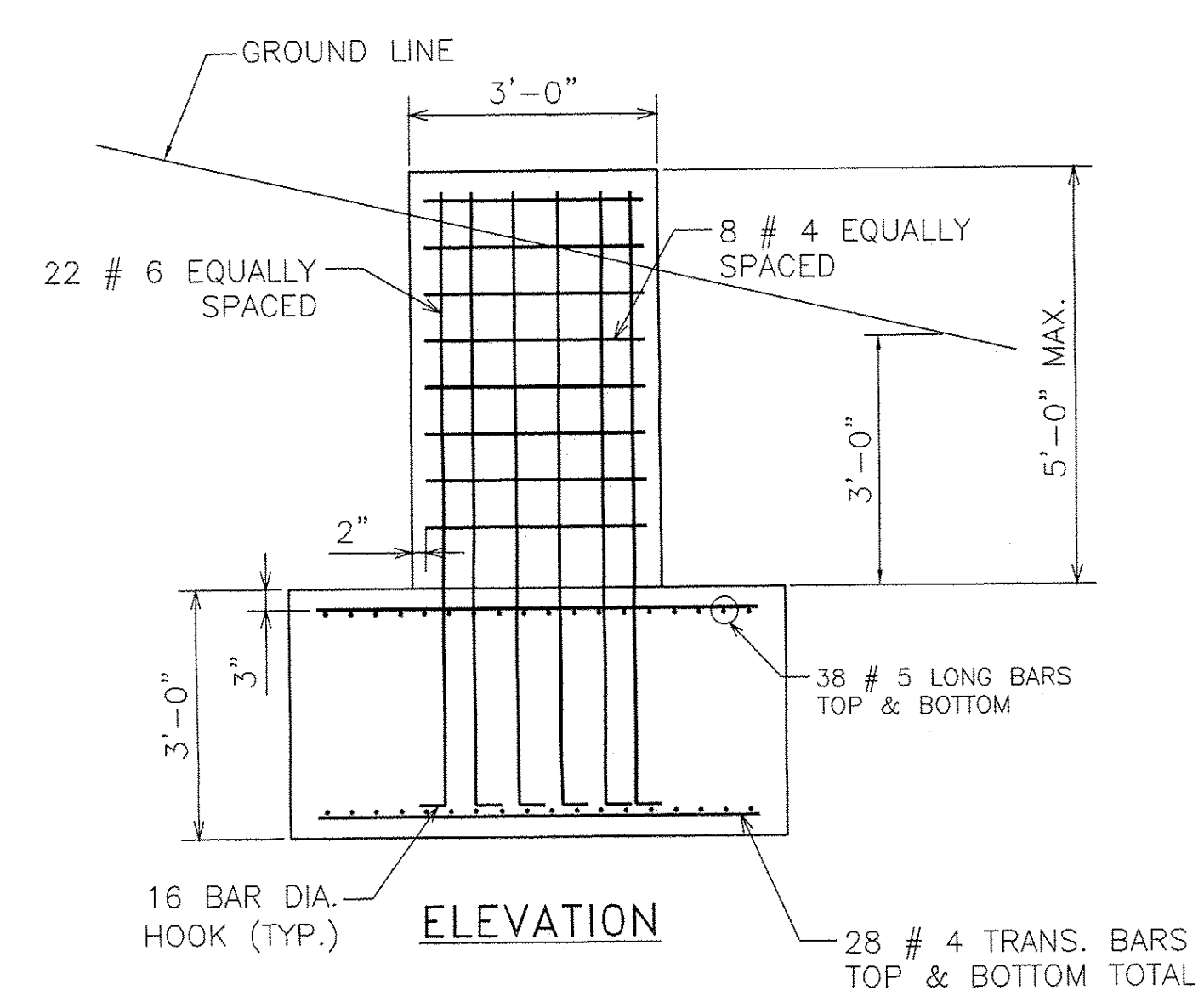
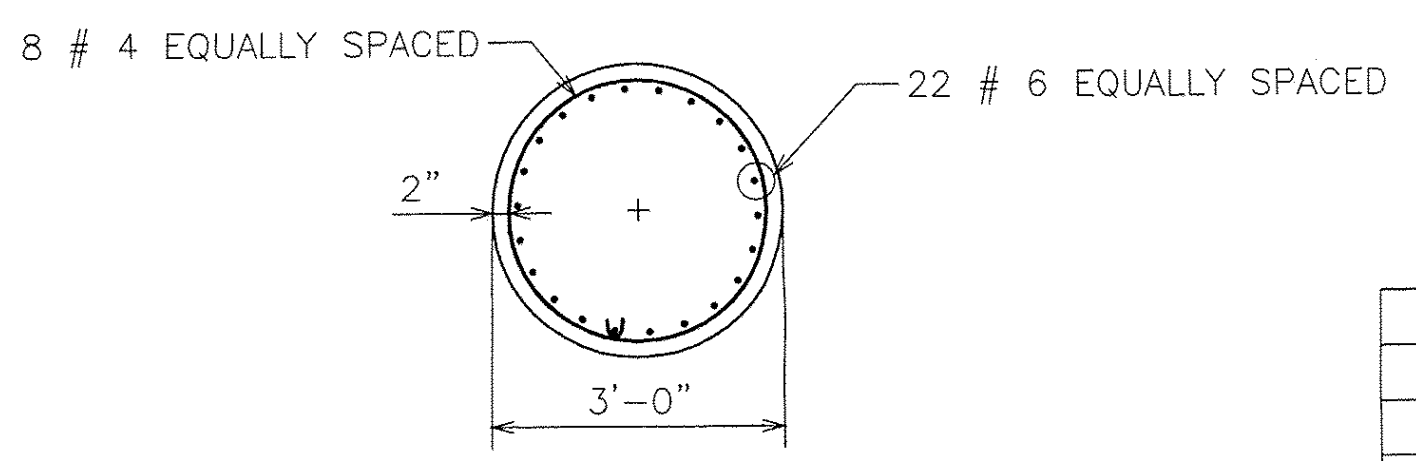


PLAN



ELEVATION



PLAN (STEM)

INTERCHANGE #6 0.138 LT				
MK	QTY	DESCRIPTION	LENGTH	SPEC.
TA1 TRUSS SECTION ASSEMBLY				
PA1	1	4.500" O.D. x .237" WALL CHORD PIPE	29'-5.937"	A500 gr B, API 5LX42
PA2	1	4.500" O.D. x .237" WALL CHORD PIPE	33'-1.500"	A500 gr B, API 5LX42
PA3	1	4.500" O.D. x .237" WALL CHORD PIPE	33'-1.313"	A500 gr B, API 5LX42
ag1	21	L 3x3x.25"	4'-9.625"	A709 Gr 36
ag2	4	L 3x3x.25"	3'-5.500"	A709 Gr 36
pt1	6	0.375" THICK PLATE	5"x1'-3"	A709 Gr 50
pt2	18	0.375" THICK PLATE	5"x1'-8"	A709 Gr 50
pt3	4	0.375" THICK PLATE	5"x10"	A709 Gr 50
bar1	3	0.25" PLUG PLATE	2.25"x4.500"	A709 Gr 36
sp1	3	0.500" SPLICE PLATE	9.500" O.D.	A709 Gr 50
TA2 TRUSS SECTION ASSEMBLY				
PA4	1	4.500" O.D. x .237" WALL CHORD PIPE	29'-5.937"	A500 gr B, API 5LX42
PA5	1	4.500" O.D. x .237" WALL CHORD PIPE	33'-1.500"	A500 gr B, API 5LX42
PA6	1	4.500" O.D. x .237" WALL CHORD PIPE	33'-1.313"	A500 gr B, API 5LX42
ag1	21	L 3x3x.25"	4'-9.625"	A709 Gr 36
ag2	4	L 3x3x.25"	3'-5.500"	A709 Gr 36
pt1	6	0.375" THICK PLATE	5"x1'-3"	A709 Gr 50
pt2	18	0.375" THICK PLATE	5"x1'-8"	A709 Gr 50
pt3	4	0.375" THICK PLATE	5"x10"	A709 Gr 50
bar1	3	0.25" PLUG PLATE	2.25"x4.500"	A36
sp1	3	0.500" SPLICE PLATE	9.500" O.D.	A709 Gr 50
1LT LEFT POST ASSEMBLY				
po1	1	14" O.D. x .500" WALL PIPE	26'-3.750"	A500 gr B, API 5LX42
cp1	1	0.25" CAP PLATE	1'-2.500" O.D.	A36
gt	1	0.125" GASKET	14.5" O.D.-12.5" I.D.	50 DURO. NEOPRENE
bar3	1	L1.5x1.5x.25"	1'-1"	A36
hb1	1	0.500" DIA. HEX BOLT	2.500"	A307
wnt	1	0.500" DIA. HEX NUT		A563
rbw	1	0.500" DIA. RUBBER WASHER		50 DURO. NEOPRENE
gw	1	0.500" DIA. WASHER		F844
pt4	2	0.500" PLATE	8" x 6.500"	A709 Gr 50
pt5	4	0.500" PLATE	16" x 16"	A709 Gr 50
bar2	1	0.625" x 2.500" BAR	21.500"	A36
ga	1	0.125" GASKET	7.750" x 5.250"	50 DURO. NEOPRENE
fc	1	0.25" COVER PLATE	7.750" x 5.250"	A36
cb	4	0.375" DIA. HEX BOLT	1"	A307
lug	1	0.25" PLATE	1" x 1"	A36
bp1	1	2" BASE PLATE	2'-6" O.D.	A709 Gr 50

REBAR LIST

REBAR	PCS. REQD.	LENGTH	SPEC.
#4	16	9'-0"	A615 Gr. 60
#4	56	5'-6"	A615 Gr. 60
#6 (90° HOOK ONE END)	44	8'-6"	A615 Gr. 60
#5	76	19'-6"	A615 Gr. 60

D. J. Cleary

REVISIONS		
No.	Remarks	Date
0	Initial submittal	
1	MK-ub2	3/10/10
2	Footing design	5/26/10

1RT RIGHT POST ASSEMBLY				
po2	1	14" O.D. x .500" WALL PIPE	32'-3.750"	A500 gr B, API 5LX42
cp1	1	0.25" CAP PLATE	1'-2.500" O.D.	A36
gt	1	0.125" GASKET	14.5" O.D.-12.5" I.D.	50 DURO. NEOPRENE
bar3	1	L1.5x1.5x.25"	1'-1"	A36
hb1	1	0.500" DIA. HEX BOLT	2.500"	A307
wnt	1	0.500" DIA. HEX NUT		A563
rbw	1	0.500" DIA. RUBBER WASHER		50 DURO. NEOPRENE
gw	1	0.500" DIA. WASHER		F844
pt4	2	0.500" PLATE	8" x 6.500"	A709 Gr 50
pt5	4	0.500" PLATE	16" x 16"	A709 Gr 50
bar2	1	0.625" x 2.500" BAR	21.500"	A36
ga	1	0.125" GASKET	7.750" x 5.250"	50 DURO. NEOPRENE
fc	1	0.25" COVER PLATE	7.750" x 5.250"	A36
cb	4	0.375" DIA. HEX BOLT	1"	A307
lug	1	0.25" PLATE	1" x 1"	A36
bp1	1	2" BASE PLATE	2'-6" O.D.	A709 Gr 50
SIGN ASSEMBLY				
sh1	4	W6x8.5	12'-6"	A36
sh2	4	W6x8.5	10'-0"	A36
ub2	32	0.625" DIA. U-BOLT	7"	F1554 Gr 36
sk1	64	0.625" DIA. SELF LOCKING NUT		A563 DH
sw1	64	0.625" DIA. FALT WASHER		F436
HARDWARE				
sbt1	24	0.625" DIA. SPLICE HEX BOLT	2.250"	A325
snt1	24	0.625" DIA. HEX NUT		A563 DH
swr1	48	0.625" DIA. WASHER		F436
ub1	8	0.75" DIA. U-BOLT	7.500"	F1554 Gr 36
un1	16	0.75" DIA. LOCK NUT		A563 DH
uw1	16	0.75" DIA. FALT WASHER		F436
ANCHOR BOLT				
an1	12	2" DIA. STUD	3'-8"	S/S A276 TY304
nt	48	2" DIA. HEX NUT		S/S A194B TY304
wr	12	2" DIA. WASHER		S/S TY304
lk	12	2" DIA. LOCK WASHER		S/S TY305
anp	12	1" PLATE WASHER	4" x 4"	S/S TY305



HIGHWAY SAFETY CORP.
GLASTONBURY, CT

TRI CHORD OVERHEAD SIGN STRUCTURE
SIGN 0.138 OH INTERCHANGE #6
PROJECT NUMBER IMG SIGN(19)
ROYALTON - MIDDLESEX
VERMONT AGENCY OF TRANSPORTATION

DRAWN: MHM
CHECKED: [Signature]
DATE: 12/22/09
SCALE: NTS
RISC REFERENCE NO.: 1729a
GENERAL CONTRACTOR: [Blank]
SUB CONTRACTOR: CCS Constructors LLC

SIZE: D REVISION: 0
SHEET NO.: 6 of 6