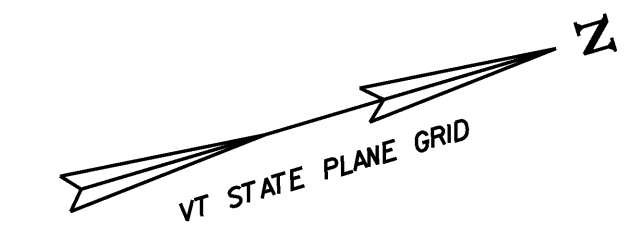
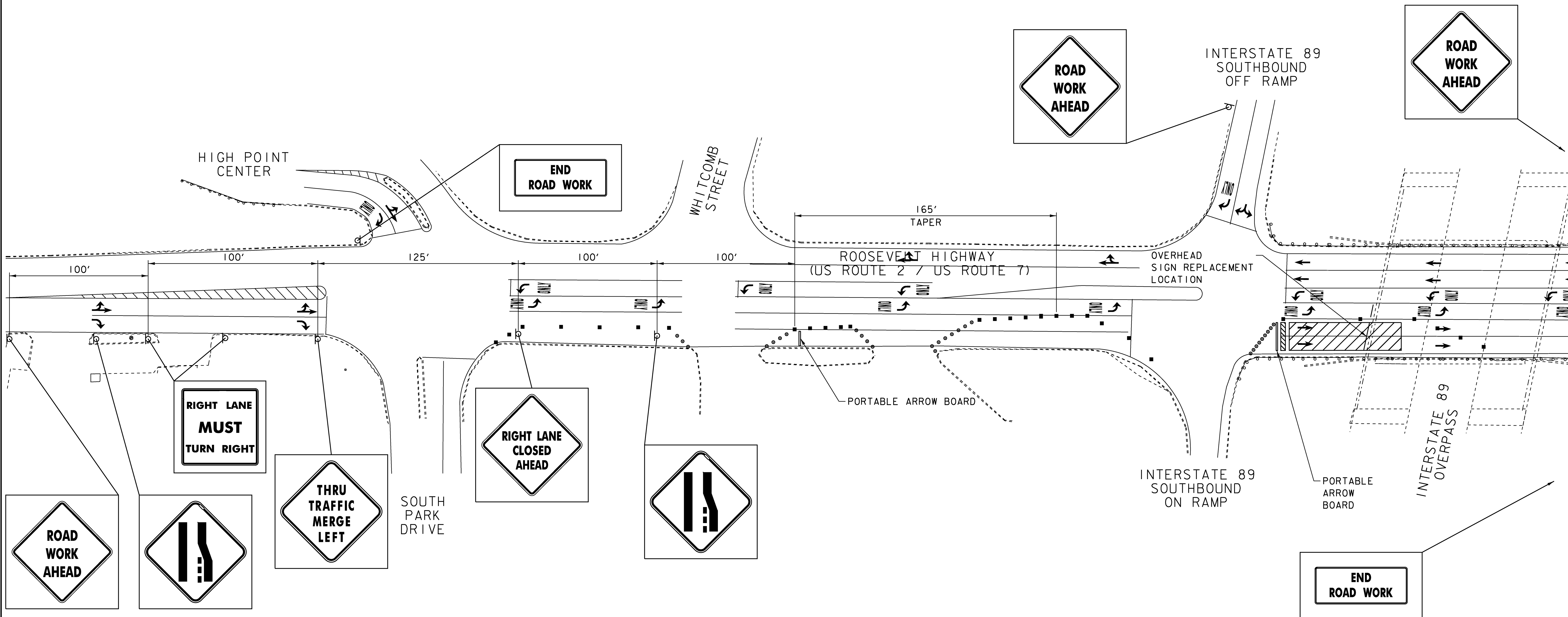


NOTES:

1. REFER TO SHEET 216 FOR NOTES.



LOCATED AT CORNER OF  
ROOSEVELT HIGHWAY  
US ROUTE 2 / US ROUTE 7  
AND I-89 NORTHBOUND  
ON RAMP



**LEGEND**

- TRAFFIC BARREL
- TRAFFIC CONE
- ▨ WORK AREA
- ▩ TYPE III BARRICADE
- ↖ FLASHING ARROW

**TRAFFIC CONTROL FOR REPLACEMENT OF US 2 WEST / US 7 NORTH SIGN**

<b>INTERCHANGE 16 SIGN REPLACEMENT TRAFFIC CONTROL SHEET 2</b>	PROJECT NAME: COLCHESTER-HIGHGATE
	PROJECT NUMBER: IMG SIGN (17)
FILE NAME: 09A016.DGN	PLOT DATE: 8/21/2009
PROJECT LEADER: EPD	DRAWN BY: BMB
DESIGNED BY: BMB	CHECKED BY: EPD
PLOT FILE: 09A016SRTC-2.1	SHEET 217 OF 221