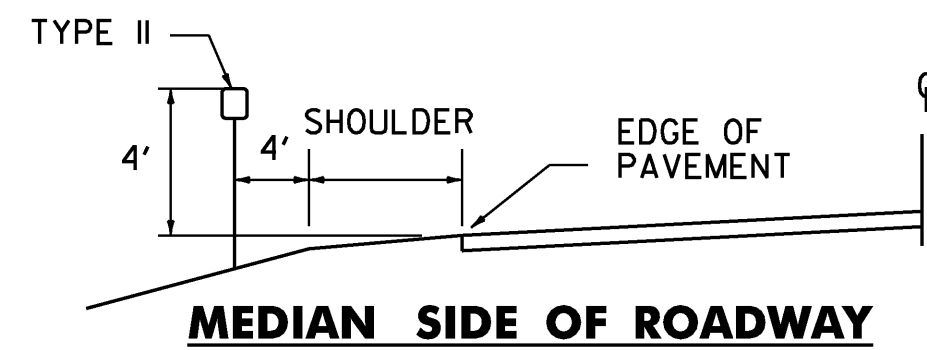


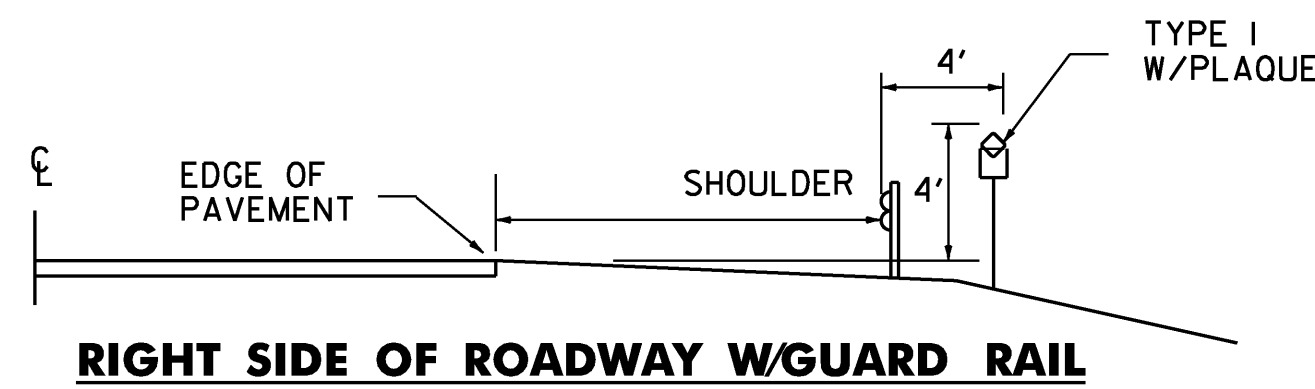
MILEPOST PLAQUE

MATERIAL FOR RETROREFLECTIVE SHEETING FOR DELINEATORS SHALL BE A 0.063" ALUMINUM BACKING WITH ASTM TYPE III RETROREFLECTIVE SHEETING GREEN LEGEND ON A WHITE BACKGROUND.



TYPICAL PLACEMENT OF TYPE II DELINEATORS ON SPEED CHANGE LANES

TYPE II DELINEATORS SHALL BE ERECTED CONTINUOUSLY ALONG THE RIGHT SIDE OF THE DECELERATION AND ACCELERATION LANES AT 100' INTERVALS INCLUDING GUARDRAIL SECTIONS. THE DELINEATORS SHALL START AT THE BEGINNING OF THE TAPER AND END AT THE NOSE OF THE EXIT OR ENTRANCE GORE. THEY SHALL HAVE WHITE REFLECTOR UNITS.



TYPICAL PLACEMENT OF DELINEATORS AND MILEPOSTS ON DIVIDED HIGHWAY

TYPE I DELINEATORS WITH WHITE REFLECTOR UNITS AND APPROPRIATE MILEPOST PLAQUES SHALL BE ERECTED CONTINUOUSLY ALONG THE RIGHT SIDE OF DIRECTION OF TRAVEL OR ALONG DIVIDED HIGHWAYS BETWEEN MILEMARKERS, AT 0.050 MILE INTERVALS.

THE TYPE I DELINEATORS WITH OR WITHOUT MILEPOST PLAQUES SHALL BE OMITTED ALONG DECELERATION AND ACCELERATION LANES, BUT THE SUCCEEDING SPACING SHALL BE AS IF THE DELINEATORS HAD BEEN ERECTED CONTINUOUSLY AND SHALL BE SO INDICATED.

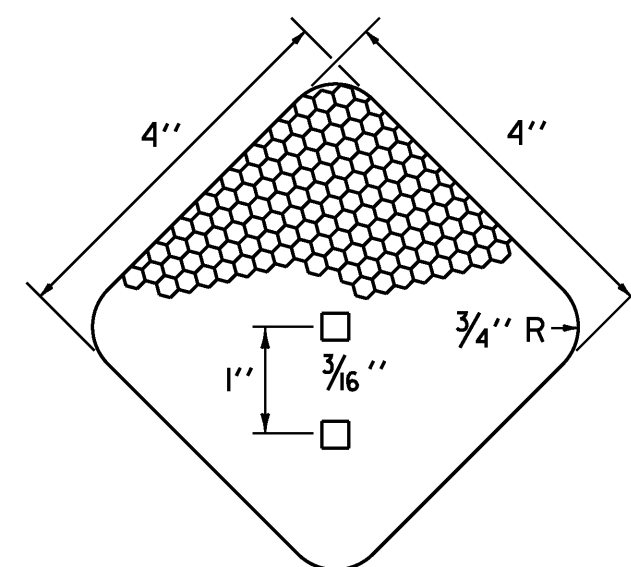
THE LOCATION OF TYPE I DELINEATORS AND MILEPOSTS ARE TO BE COMPUTED AND MARKED IN THE FIELD BY THE ENGINEER IN ACCORDANCE WITH THE LATEST REVISION OF THE AGENCY'S "POLICY ON LOCATION MARKING FOR VERMONT DIVIDED HIGHWAYS."

TYPE II YELLOW DELINEATORS SHALL BE ERECTED CONTINUOUSLY ALONG THE LEFT OR MEDIAN SIDE OF DIVIDED HIGHWAYS AT 0.05 INTERVALS, CONTINUED AT APPROXIMATELY THE SAME SPACING THROUGH INTERCHANGES AND REST AREAS WHERE THERE MAY NOT BE ANY TYPE I DELINEATORS ON THE RIGHT SIDE. PLACEMENT OF TYPE II DELINEATORS SHALL BE FOLLOWED ON THE LEFT AS ON THE RIGHT. THE SAME LATERAL TYPE I DELINEATORS WITHOUT MILEPOST PLAQUE SHALL BE INSTALLED ON INTERSTATE RAMP AS SHOWN ON THE PLANS.

TYPE I DELINEATORS WITHOUT PLAQUE SHALL BE ERECTED AT THE BEGINNING (BLUE) AND AT THE END (GREEN) OF EACH GUARDRAIL RUN.

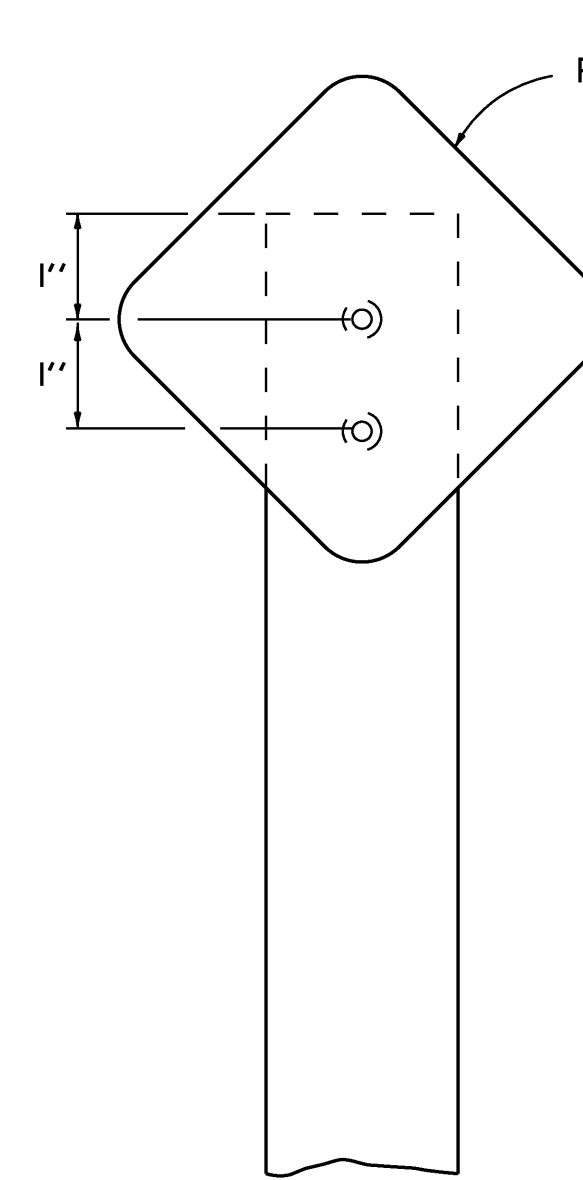
NOTES

- FOR MOUNTING DELINEATORS AND MILEPOSTS ON BRIDGES, SEE STANDARD E-199.
- REFER TO STANDARD E-197 FOR DELINEATOR PLACEMENT DETAILS, WHERE DISCREPANCIES EXIST BETWEEN E-197 AND THIS SHEET, THE DETAILS ON THIS SHEET SHALL GOVERN.
- DELINEATOR POSTS SHALL BE 1.75" I.88 LB/FT SQUARE STEEL SIGN POSTS WITH ANCHORS.
- FLEXIBLE DELINEATORS SHALL EXTEND 4 FEET ABOVE THE GROUND SURFACE WITH YELLOW RETROREFLECTIVE SHEETING ON THE FRONT AND BACK. FLEXIBLE DELINEATORS SHALL BE APPROVED BY THE MATERIALS AND RESEARCH SECTION.

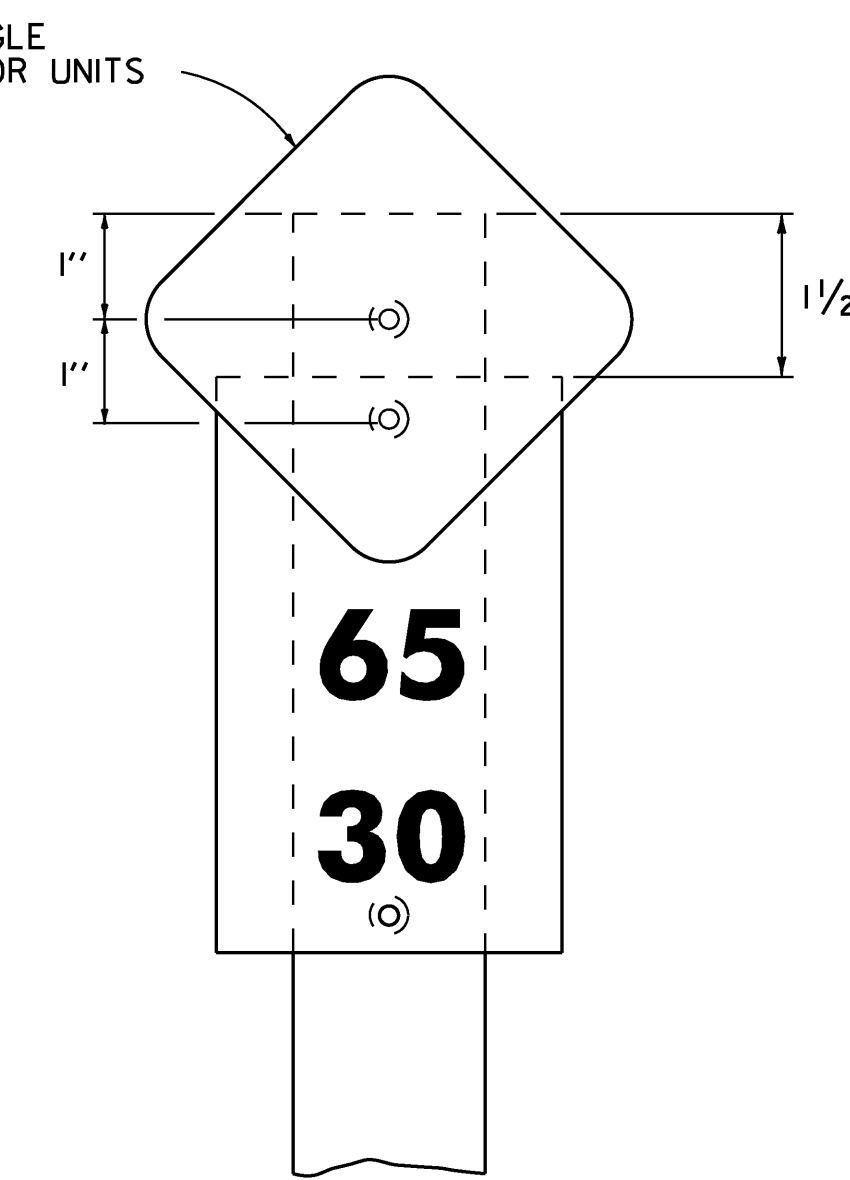


DELINEATOR REFLECTIVE SHEETING UNIT

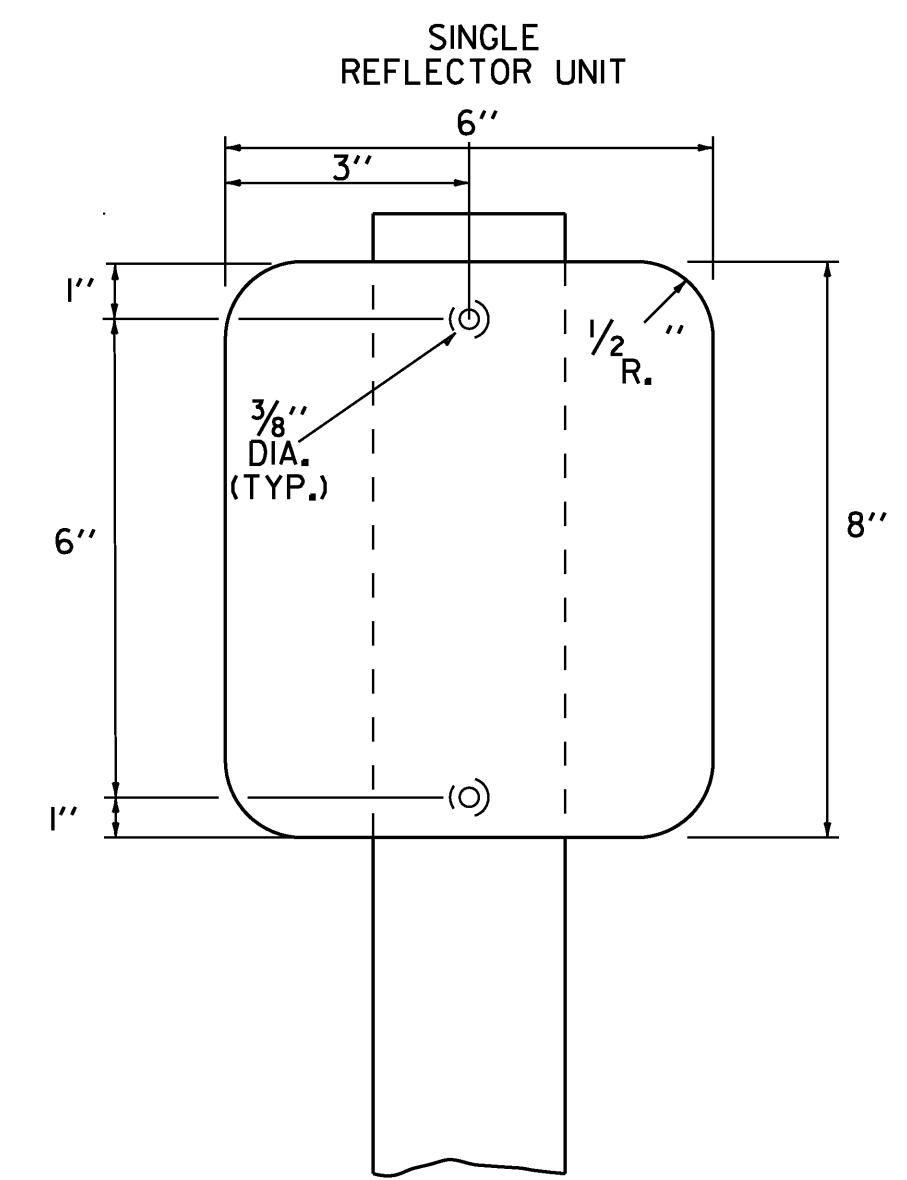
MATERIAL FOR RETROREFLECTIVE SHEETING FOR DELINEATORS SHALL BE A 0.063" ALUMINUM BACKING WITH A WHITE/BLUE/GREEN REFLECTOR MEETING ASTM TYPE III, OR RED/YELLOW SHALL BE TYPE VII, TYPE VIII OR TYPE IX.



TYPE I WITHOUT PLAQUE



TYPE I WITH PLAQUE



TYPE II (6"X8")

DELINEATORS WITH REFLECTIVE SHEETING

TYPE III DELINEATORS

TYPE III DELINEATORS WILL BE TYPE I DELINEATORS WITH AN ADDITIONAL RED REFLECTIVE UNIT MOUNTED ON THE REVERSE SIDE. THEY SHALL BE ERECTED ON THE RIGHT AND LEFT SIDE OF THE RAMP AS SHOWN ON THE PLANS.

TYPE III DELINEATORS SHALL BEGIN 50' FROM THE WRONG WAY SIGNS AND EXTEND EVERY 50' TO A POINT NOT LESS THAN 25' FROM THE DIVIDED HIGHWAY. SEE STANDARD E-197.

DELINEATOR AND MILE POST DETAIL

PROJECT NAME: COLCHESTER-HIGHGATE

PROJECT NUMBER: IMG SIGN (17)

FILE NAME: 09A016.DGN

PROJECT LEADER: EPD

DESIGNED BY: JDM

PLOT FILE: 09A016DLDET.1

PLOT DATE: 8/21/2009

DRAWN BY: JDM

CHECKED BY: EPD

SHEET 23 OF 221